

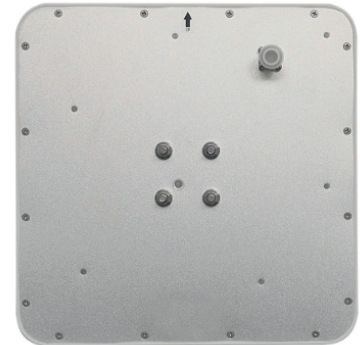
9dBi Circular 865-868MHz IP67 RFID Panel Antenna Model: ANT167

Applications

- 1 902-928MHz (RFID) Radio Frequency Identification(Optional)
- 2 865-868MHz for ETSI standard
- 3 Airports, Hospitals, Warehouse, Door Control
- 4 Personel control, Production Line and etc..

Features

- 1 Low Profile with ABS+PC radome design
- 2 1.4 VSWR with less than 2 axial ratio
- 3 IP67 Rated with ultraviolet-proof
- 4 Wide range of connector and cable options



Descriptions

AN274 antenna provides reception and transmission of signals in the FCC/ETSI frequency band. VSWR and axial are excellent and allow the user to achieve the maximum performance for an antenna of this type. The antenna is not only mechanically robust but is less likely to be exposed to excessive damage by virtue of its reduced size.

Electrical Specifications

FrequencyRange	866-868MHz
Gain(Typ)	9dBi
VSWR(Typ)	≤1.4
Axial Ratio	≤2dB
Polarization	Circular
HorizontalBeamwidth	70°
Vertical Beamwidth	60°
Impedance	50 Ohm
Max.InputPower	50 Watts
LightningProtection	DC Grounded

Mechanical Specifications

Cable Length	Connector Direct From Bottom
Connector	N-Female
Weight	1.68 Kg
Dimensions	260 x 260 x 30 mm
Mounting Hardware	Φ 30 - Φ 70mm
Radome Material	ABS
Radome Color	White
Installation Method	On Pole
Effective Wind Area	N/A
Wind-Resistant performance	N/A
Operating Temperature	-20°C to +60°C

* The products and specifications described in this document are subject to change without notice.

Applications

