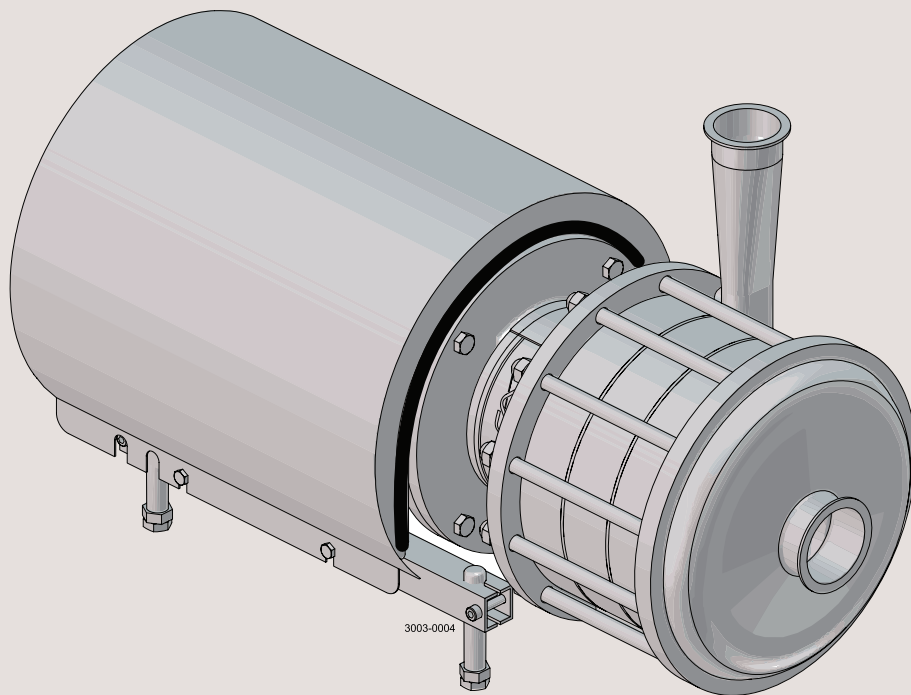




Spare Parts

LKH-110, -120 Multi-Stage Centrifugal Pump



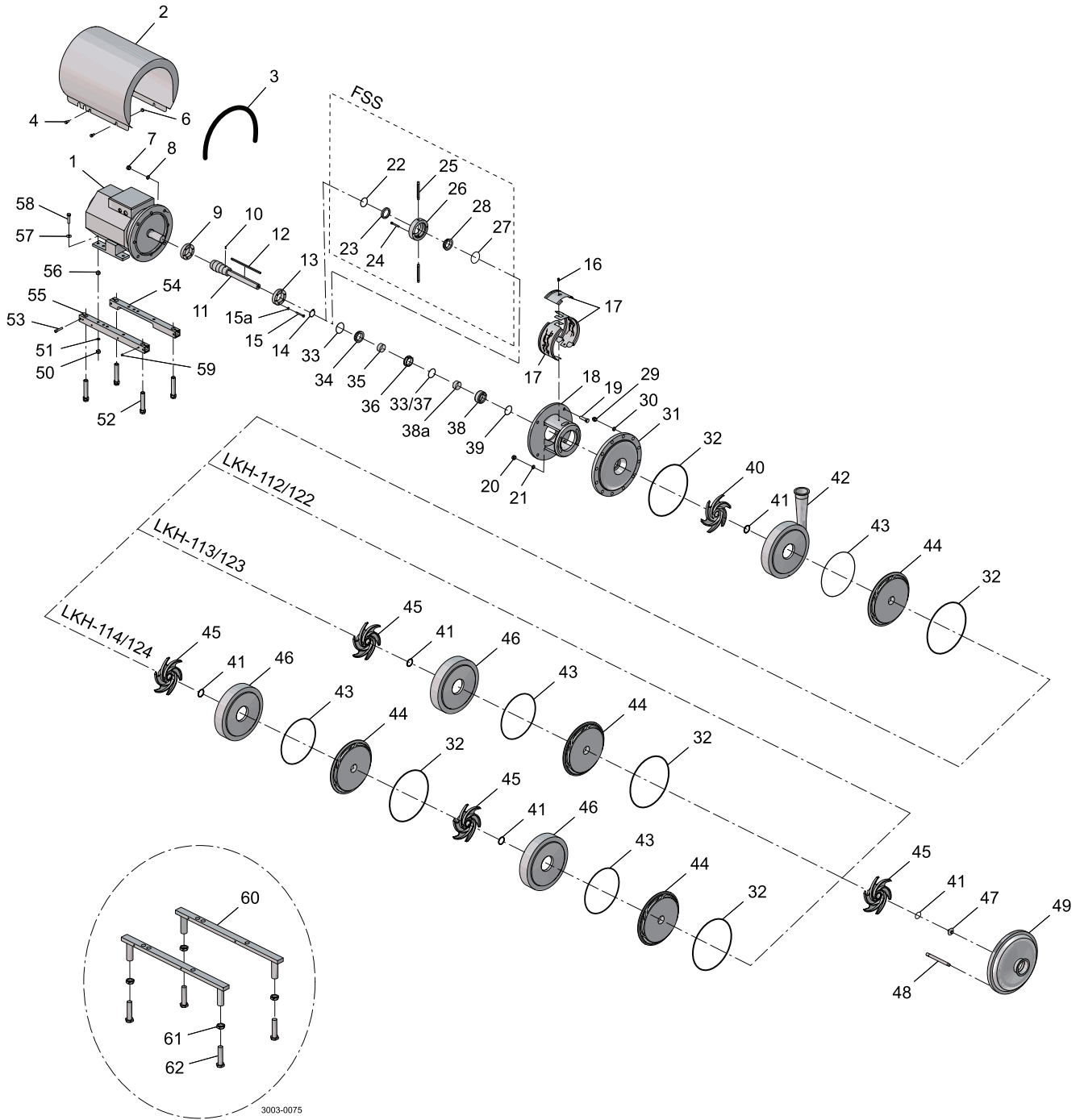
ESE00719-EN21 2023-09

Original manual

Table of contents

The information herein is correct at the time of issue but may be subject to change without prior notice

1. LKH Multi-Stage – Wet end	4
2. LKH Multi-Stage – Motor dependent parts	12
3. LKH Multi-Stage – Shaft seal and Service kits	18



Pos	Qty Denomination	LKH-112	LKH-113	LKH-114
		IEC90- IEC160	IEC100- IEC160	IEC132- IEC180

Pump Casing std. blasted

42	Pump casing, male part IDF	9612388901	9612388901	9612388901
	Pump casing, male part SMS	9612388902	9612388902	9612388902
	Pump casing, DIN	9612388903	9612388903	9612388903
	Pump casing, ferrule ISO	9612388904	9612388904	9612388904
	Pump casing, male part BS	9612388905	9612388905	9612388905
	Pump casing, flange DN40	9612389401	9612389401	9612389401

Pump Cover std. blasted

49	Pump Cover, male part IDF	9612389301	9612389301	9612389301
	Pump Cover, male part SMS	9612389302	9612389302	9612389302
	Pump cover, DIN	9612389303	9612389303	9612389303
	Pump Cover, ferrule ISO	9612389304	9612389304	9612389304
	Pump Cover, male part BS	9612389305	9612389305	9612389305
	Pump cover, flange DN50	9612389501	9612389501	9612389501

Pos	Qty Denomination	LKH-112P	LKH-113P	LKH-114P
		IEC90- IEC160	IEC100- IEC160	IEC132- IEC180

Pump Casing std. blasted

42	Pump casing, male part IDF	9612388901	9612388901	9612388901
	Pump casing, male part SMS	9612388902	9612388902	9612388902
	Pump casing, DIN	9612388903	9612388903	9612388903
	Pump casing, ferrule ISO	9612388904	9612388904	9612388904
	Pump casing, male part BS	9612388905	9612388905	9612388905
	Pump casing, flange DN40	9612389401	9612389401	9612389401

Pump Cover std. blasted

49	Pump Cover, male part IDF	9612389301	9612389301	9612389301
	Pump Cover, male part SMS	9612389302	9612389302	9612389302
	Pump cover, DIN	9612389303	9612389303	9612389303
	Pump Cover, ferrule ISO	9612389304	9612389304	9612389304
	Pump Cover, male part BS	9612389305	9612389305	9612389305
	Pump cover, flange DN50	9612389501	9612389501	9612389501

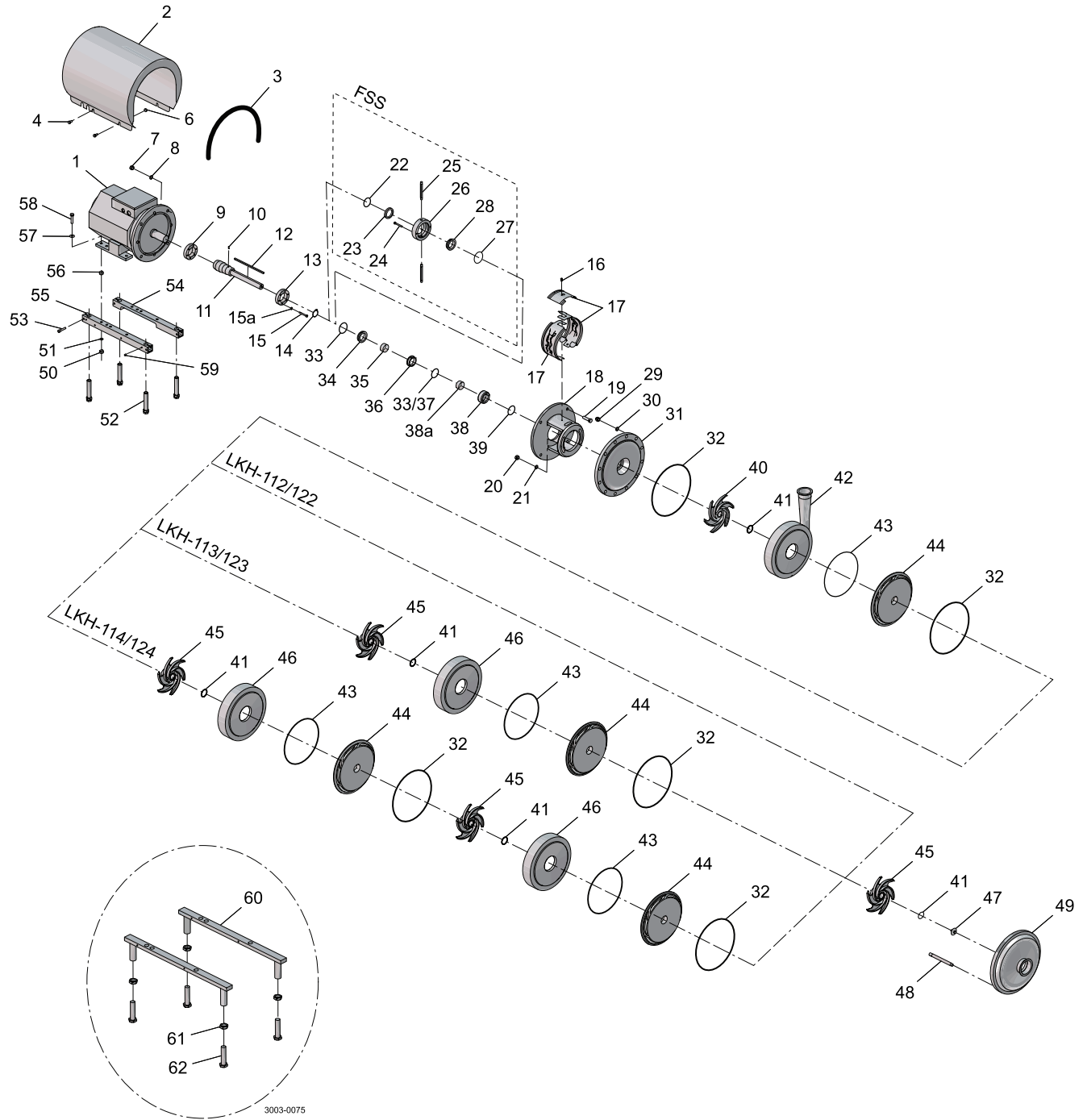
Pos	Qty Denomination	LKH-122	LKH-123	LKH-124
		IEC180- IEC200	IEC180- IEC250	IEC200- IEC250

Pump Casing std. blasted

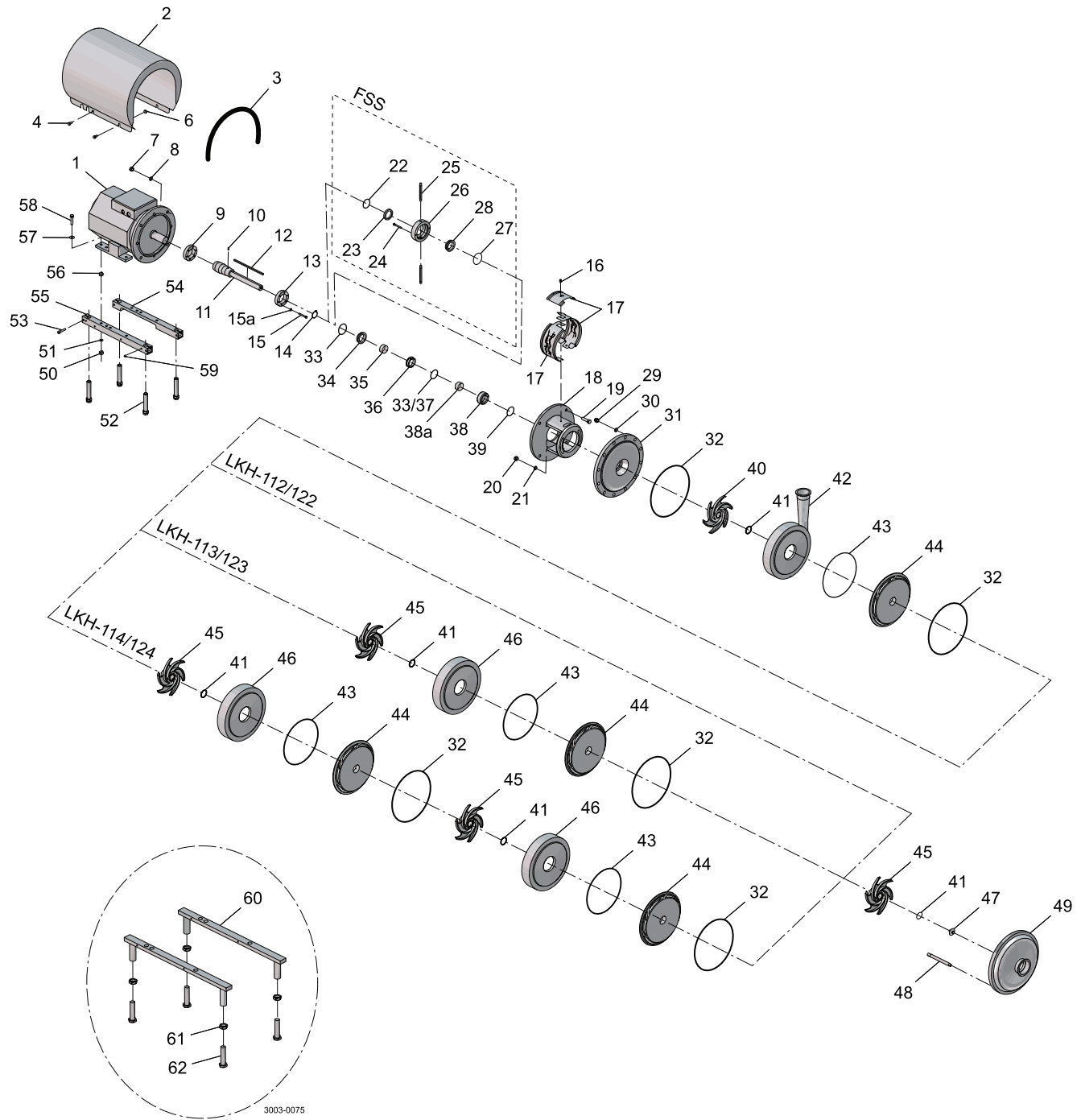
42	Pump casing, compl. Flange	9612592301	9612592301	9612592301
	Pump casing, compl. Clamp	9612592302	9612592302	9612592302

Pump Cover std. blasted

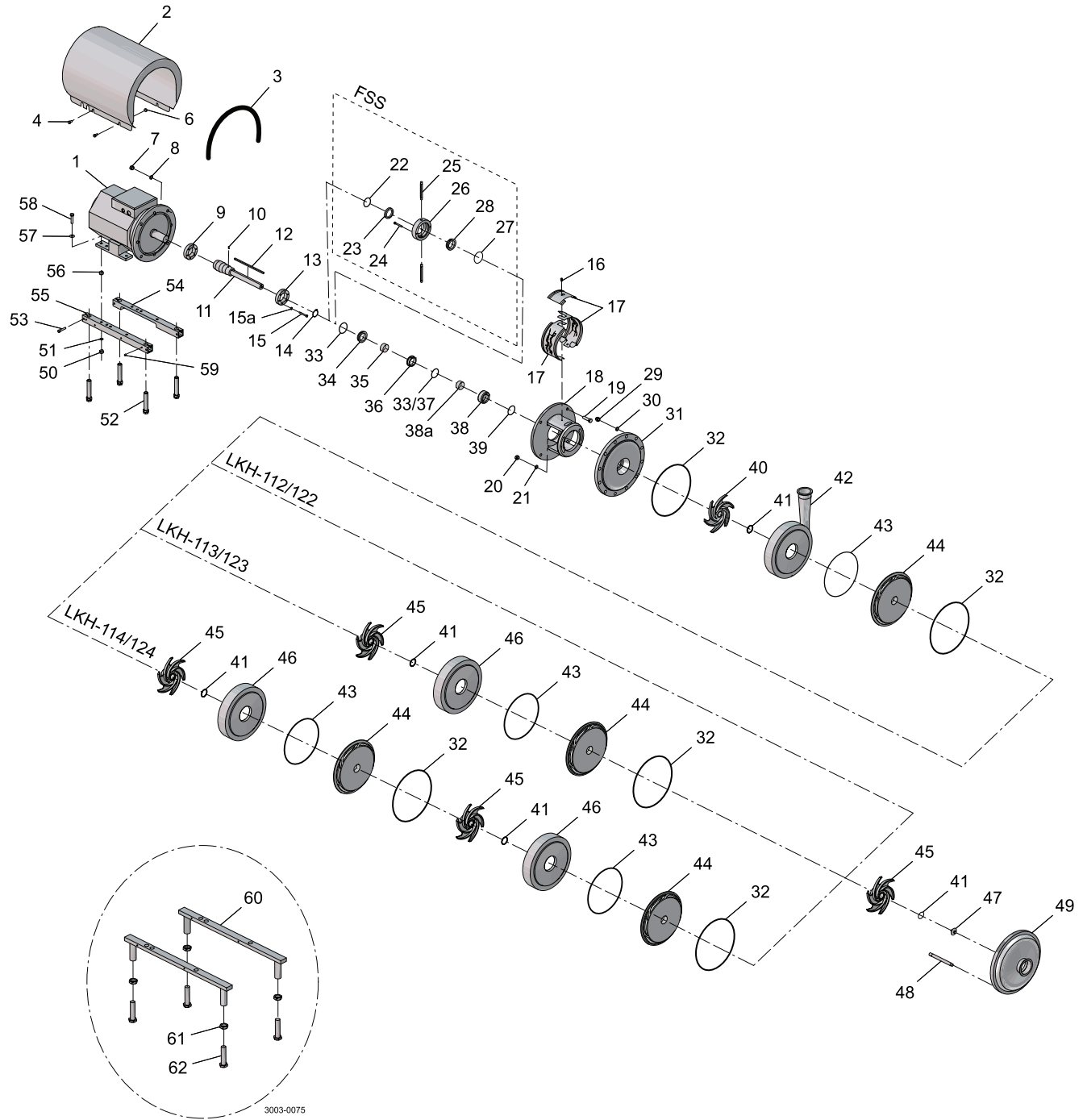
49	Pump cover, compl. Flange	9612592401	9612592401	9612592401
	Pump cover, compl. Clamp	9612592402	9612592402	9612592402



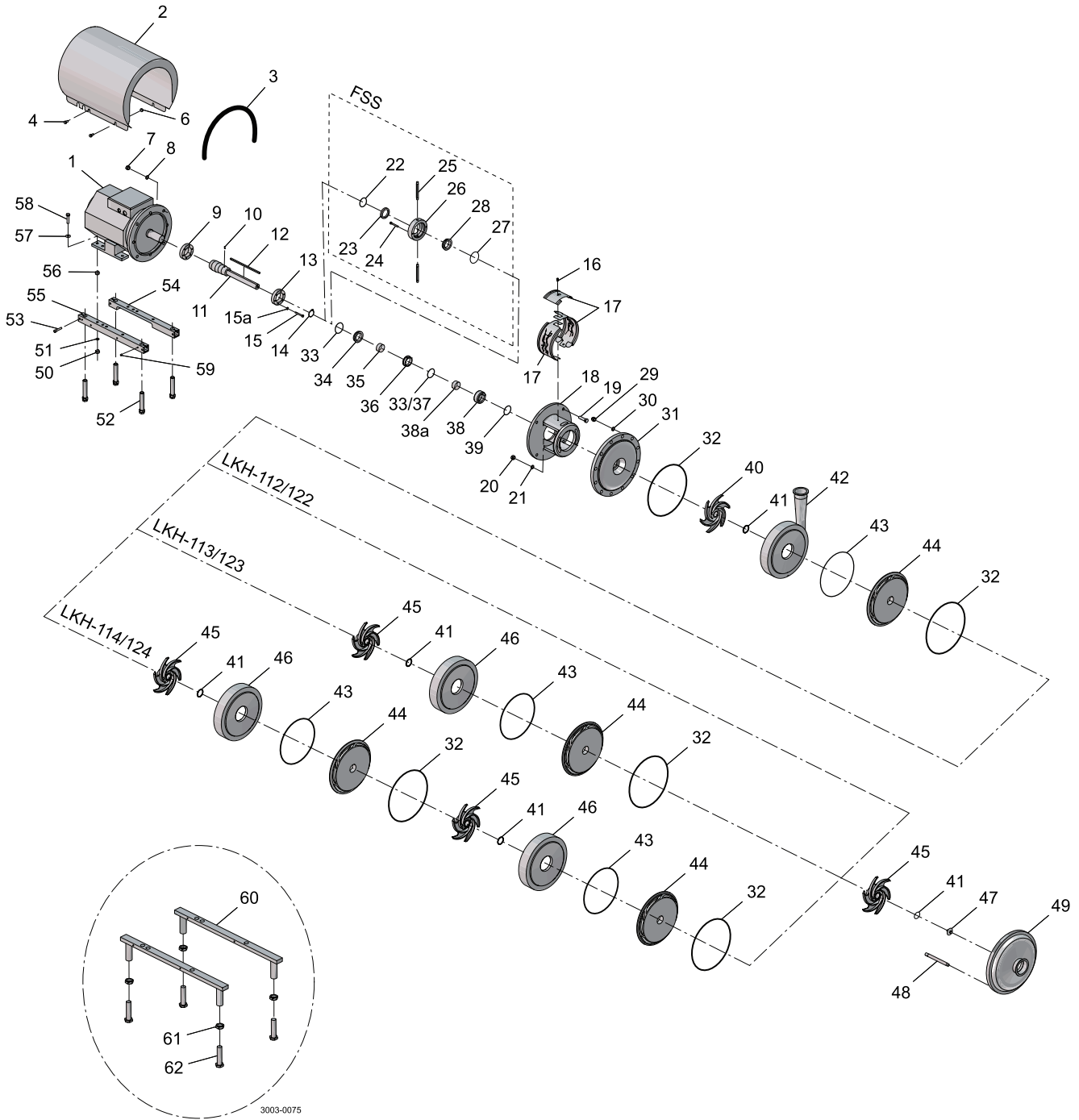
Pos	Qty	Denomination	LKH-112 IEC90- IEC160	LKH-113 IEC100- IEC160	LKH-114 IEC132- IEC180
29	6	Cap nut	9611992593	9611992593	9611992593
30	6	Washer	9611991887	9611991887	9611990676
48	6	Bolt	9612363501	9612363502	9612363503
43	1	□◆○■ O-ring, EPDM, (standard)	9611992747		
		O-ring, NBR	9611992748		
		O-ring, FPM	9611992749		
	2	O-ring, EPDM, (standard)		9611992747	
		O-ring, NBR		9611992748	
		O ring, FPM		9611992749	
	3	O-ring, EPDM, (standard)			9611992747
		O-ring, NBR			9611992748
		O-ring, FPM			9611992749
41	2	O-ring, EPDM, (standard)	9611992750		
		O-ring, NBR	9611992751		
		O-ring, FPM	9611992752		
	3	O-ring, EPDM, (standard)		9611992750	
		O-ring, NBR		9611992751	
		O-ring, FPM		9611992752	
	4	O-ring, EPDM, (standard)			9611992750
		O-ring, NBR			9611992751
		O-ring, FPM			9611992752
32	2	□◆○■ O-ring, EPDM, (standard)	9611992744		
		O-ring, NBR	9611992745		
		O-ring, FPM	9611992746		
	3	O-ring, EPDM, (standard)		9611992744	
		O-ring, NBR		9611992745	
		O-ring, FPM		9611992746	
	4	O-ring, EPDM, (standard)			9611992744
		O-ring, NBR			9611992745
		O-ring, FPM			9611992746
44	1	Guide vanes blasted	9612361301		
	2	Guide vanes blasted		9612361301	
	3	Guide vanes blasted			9612361301
46	1	Intermediate casing blasted		9612361001	
	2	Intermediate casing blasted			9612361001
40	1	Impeller back std. blasted	9612360401	9612360401	9612360401
45	1	Impeller std. blasted	9612360501		
	2	Impeller std. blasted		9612360501	
	3	Impeller std. blasted			9612360501
47	1	Impeller screw std. Blasted	9612362701	9612362701	9612362701
31	1	Back plate std. blasted, (0-10 bar)	9612389208	9612389208	9612389208
20	2	Nut	9611990353	9611990353	9611990353
21	2	Washer	9611992559	9611992559	9611992559
12	1	Key	9611992756	9611992757	9611992758
63	1	Set of 8 springs for rotating sealhousing, (incl. In pos 38)	9611995848	9611995848	9611995848



Pos	Qty	Denomination	LKH-112P	LKH-113P	LKH-114P
			IEC90- IEC160	IEC100- IEC160	IEC132- IEC180
29	6	Cap nut	9611992593	9611992593	9611992593
30	6	Washer	9611991887	9611991887	9611990676
48	6	Bolt	9612363501	9612363502	9612363503
43	1	O-ring, EPDM, (standard)	9611992747		
		O-ring, NBR	9611992748		
		O-ring, FPM	9611992749		
	2	O-ring, EPDM, (standard)		9611992747	
		O-ring, NBR		9611992748	
		O-ring, FPM		9611992749	
	3	O-ring, EPDM, (standard)			9611992747
		O-ring, NBR			9611992748
		O-ring, FPM			9611992749
41	2	O-ring, EPDM, (standard)	9611992750		
		O-ring, NBR	9611992751		
		O-ring, FPM	9611992752		
	3	O-ring, EPDM, (standard)		9611992750	
		O-ring, NBR		9611992751	
		O-ring, FPM		9611992752	
	4	O-ring, EPDM, (standard)			9611992750
		O-ring, NBR			9611992751
		O-ring, FPM			9611992752
32	2	O-ring, EPDM, (standard)	9611992744		
		O-ring, NBR	9611992745		
		O-ring, FPM	9611992746		
	3	O-ring, EPDM, (standard)		9611992744	
		O-ring, NBR		9611992745	
		O-ring, FPM		9611992746	
	4	O-ring, EPDM, (standard)			9611992744
		O-ring, NBR			9611992745
		O-ring, FPM			9611992746
44	1	Guide vanes blasted	9612361301		
	2	Guide vanes blasted		9612361301	
	3	Guide vanes blasted			9612361301
46	1	Intermediate casing blasted		9612361001	
	2	Intermediate casing blasted			9612361001
40	1	Impeller back std. blasted	9612360401	9612360401	9612360401
45	1	Impeller std. blasted	9612360501		
	2	Impeller std. blasted		9612360501	
	3	Impeller std. blasted			9612360501
47	1	Impeller screw std. blasted	9612362701	9612362701	9612362701
31	1	Back plate std. blasted, (\leq 10 bar)	9612389214	9612389214	9612389214
20	2	Nut	9611990353	9611990353	9611990353
21	2	Washer	9611992559	9611992559	9611992559
12	1	Key	9611992756	9611992757	9611992758
63	1	Set of 8 springs for rotating sealhousing, (incl. in pos 38)	9611995848	9611995848	9611995848



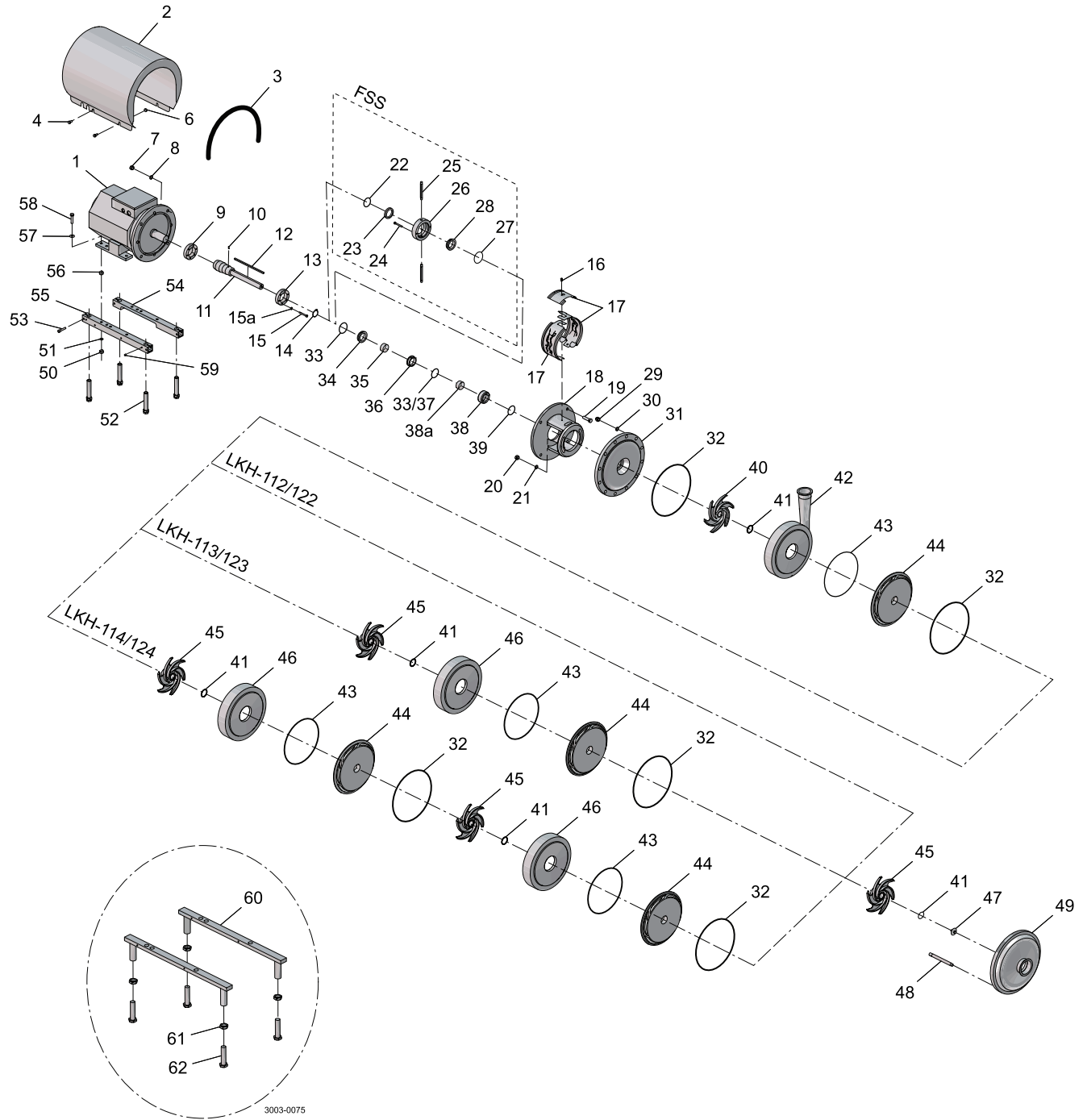
Pos	Qty	Denomination	LKH-122 IEC180- IEC200	LKH-123 IEC180- IEC250	LKH-124 IEC200- IEC250
29	11	Cap nut	9611993685	9611993685	9611993685
30	11	Washer	9611993684	9611993684	9611993684
48	11	Bolt	9612363506	9612363507	9612363508
43	1	O-ring, EPDM, (standard)	9611993582		
		O-ring, NBR	9611993583		
		O-ring, FPM			
	2	O-ring, EPDM, (standard)		9611993582	
		O-ring, NBR		9611993583	
		O-ring, FPM			
	3	O-ring, EPDM, (standard)			9611993582
		O-ring, NBR			9611993583
		O-ring, FPM			
41	2	O-ring, EPDM, (standard)	9611993578		
		O-ring, NBR	9611993579		
		O-ring, FPM			
	3	O-ring, EPDM, (standard)		9611993578	
		O-ring, NBR		9611993579	
		O-ring, FPM			
	4	O-ring, EPDM, (standard)			9611993578
		O-ring, NBR			9611993579
		O-ring, FPM			
32	2	O-ring, EPDM, (standard)	9611993574		
		O-ring, NBR	9611993575		
		O-ring, FPM			
	3	O-ring, EPDM, (standard)		9611993574	
		O-ring, NBR		9611993575	
		O-ring, FPM			
	4	O-ring, EPDM, (standard)			9611993574
		O-ring, NBR			9611993575
		O-ring, FPM			
44	1	Guide vanes blasted	9612590302		
	2	Guide vanes blasted		9612590302	
	3	Guide vanes blasted			9612590302
46	1	Intermediate casing blasted		9612590902	
	2	Intermediate casing blasted			9612590902
40	1	Impeller back std. blasted	9612590604	9612590604	9612590604
45	1	Impeller std. blasted	9612590603		
	2	Impeller std. blasted		9612590603	
	3	Impeller std. blasted			9612590603
47	1	Impeller screw std. blasted	9612591304	9612591304	9612591304
31	1	Back plate std. blasted, (10 ≤ bar)	9612389224	9612389224	9612389224
20	2	Nut	9611990353	9611990353	9611990353
21	2	Washer	9611992559	9611992559	9611992559
12	1	Key	9611993476	9611992758	9611993474
63	1	Set of 8 springs, for rotating sealhousing (incl. In pos 38)	9611995849	9611995849	9611995849



LKH Multi-Stage – Motor dependent parts

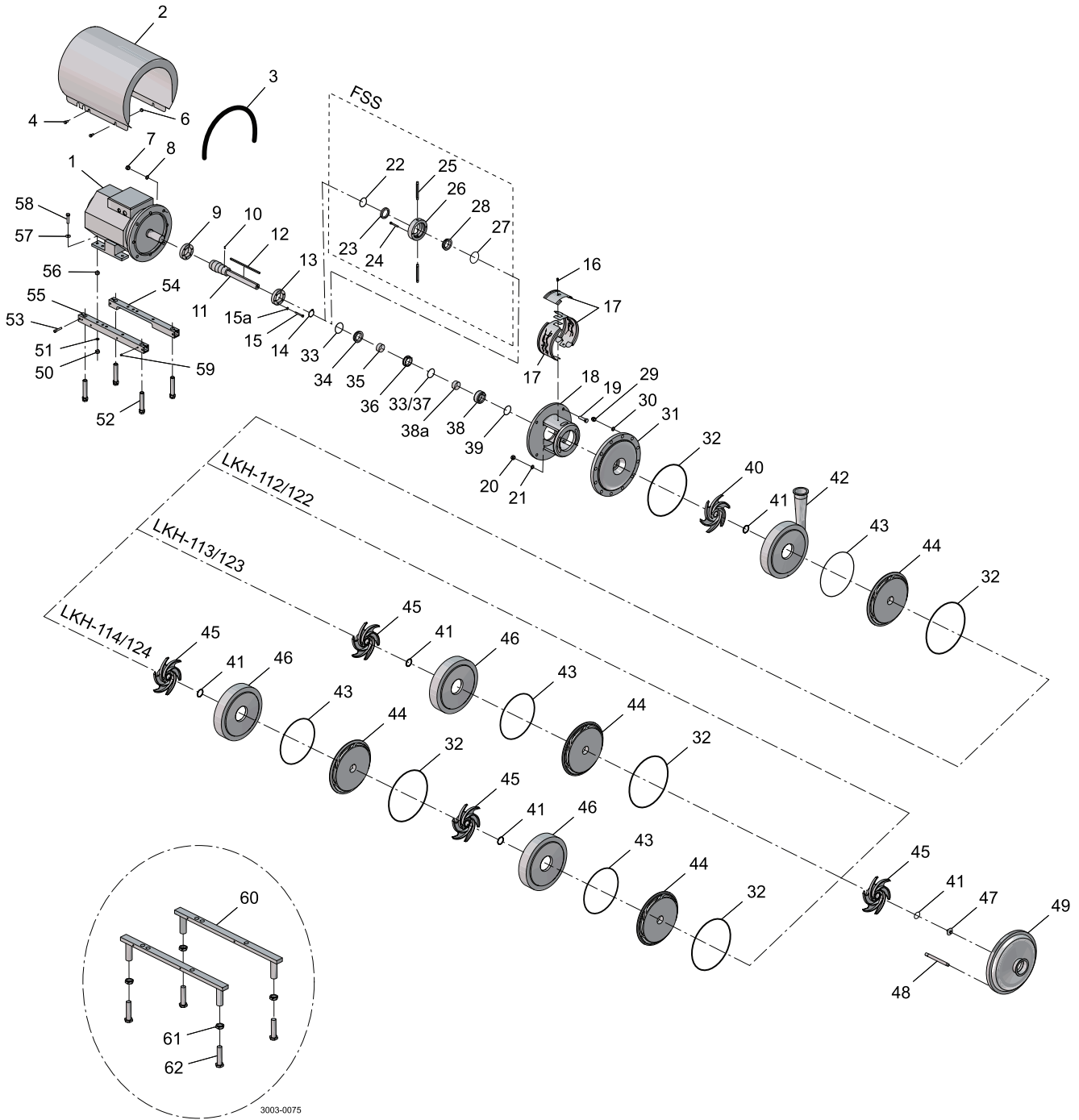
Pos	Qty	Denomination	IEC90	IEC100	IEC112
2	1	Shroud	9612139001	9614192203	9612139003
3	1	Edge list, (Included in pos. 2)			
4	4	Screw	9611993240	9611993240	9611993240
9	1	Compression ring, with thread	9612133601	9612133602	9612133602
13	1	Compression ring, without thread	9612133701	9612133702	9612133702
15	6	Screw	9611993196	9611993196	9611993196
15a	6	Washer	9611993199	9611993199	9611993199
11	1	Shaft, LKH112/LKH112P single shaft seal	9612389601	9612361901	9612361901
	1	Shaft, LKH113/LKH113P single shaft seal		9612361902	9612361902
	1	Shaft incl. pin, (pos.8) LKH112/LKH112P flushed shaft seal	9612389602	9612361903	9612361903
	1	Shaft incl. pin, (pos.8) LKH113/LKH113P flushed shaft seal		9612361904	9612361904
10	1	Connex pin, for flushed shaft seal	9611990622	9611990622	9611990622
14	1	Retaining ring	9611992307		
17	1	Safety guard set	9614077401	9614077402	9614077402
	1	Safety Guard left new	9615270101	9615270201	9615270201
	1	Safety Guard right new	9615270111	9615270211	9615270211
	1	Top Plate new	9615271301	9615271401	9615271401
16	1	Screw, for safety guard	9611993239	9611993239	9611993239
18	1	Adaptor	9612342301	9612342401	9612342401
19	4	Screw for adaptor	9611992161	9611991834	9611991834
8	4	Washer for adaptor	9611991887	9611990676	9611990676
7	4	Nut for adaptor	9611990353	9611990587	9611990587
55	1	Support bar, right	9612132201	9612132205	9612132205
54	1	Support bar, left	9612132301	9612132305	9612132305
52	4	Leg	9612396701	9612396701	9612396701
50	4	Nut	9611990360	9611990353	9611990353
51	4	Spring washer	9611991888	9611991887	9611991887
58	4	Screw	9611993241	9611991911	9611991911
57	4	Washer		9611990786	9611990786
56	4	Nut		9611990587	
53	4	Screw	9611991907	9611991907	9611991907
6	4	Distance sleeve		9611992737	

Pos	Qty	Denomination	IEC132	IEC160	IEC180
2	1	Shroud	9612139008	9612139005	9612139006
3	1	Edge list, (Included in pos. 2)			
4	4	Screw	9611993240	9611993241	9611993240
9	1	Compression ring with thread	9612133605	9612133603	9612133604
13	1	Compression ring without thread	9612133705	9612133703	9612133704
15	6	Screw	9611993197	9611993197	9611993198
15a	6	Washer	9611993199	9611993199	9611993199
11	1	Shaft, LKH112/LKH112P single shaft seal	9612362001	9612362101	
	1	Shaft, LKH113/LKH113P single shaft seal	9612362002	9612362102	
	1	Shaft, LKH114/LKH114P single shaft seal	9612362003	9612362103	9612514801
	1	Shaft incl. pin , (pos.8) LKH112/LKH112P flushed shaft seal	9612362004	9612362104	
	1	Shaft incl. pin, (pos.8) LKH113/LKH113P flushed shaft seal	9612362005	9612362105	
	1	Shaft incl. pin , (pos.8) LKH114/LKH114P flushed shaft seal	9612362006	9612362106	9612514802
	1	Shaft incl. pin, (pos.8) LKH122			9612592001
	1	Shaft incl. pin, (pos.8) LKH123			9612592002
	1	Shaft incl. pin, (pos.8) LKH124			9612592003
10	1	Connex pin, for flushed shaft seal	9611990622	9611990622	9611990622
17	1	Safety guard set	9614077403	9614077404	9614077404
	1	Safety Guard left new	9615270101	9615270201	9615270201
	1	Safety Guard right new	9615270311	9615270411	9615270411
	1	Top Plate new	9615271501	9615271601	9615271601
16	1	Screw for safety guard	9611993239	9611993239	9611993239
18	1	Adaptor	9612342501	9612342601	9612342601
19	4	Screw for adaptor	9611992162	9611992163	9611992164
8	4	Washer for adaptor	9611990676	9611991886	9611991886
7	4	Nut for adaptor	9611990587	9611992160	9611992160
55	1	Support bar, right	9612132206	9612132203	9612132204
54	1	Support bar, left	9612132306	9612132303	9612132304
52	4	Leg	9612396701	9612396701	9612396701
50	4	Nut	9611990353	9611990587	9611990587
51	4	Spring washer	9611991887	9611990676	9611990676
58	4	Screw	9611991911	9611991834	9611991834
57	4	Washer	9611990786	9611990706	9611990706
53	4	Screw	9611991907	9611991907	9611991907
6	4	Distance sleeve	9611992737	3143803902	



LKH Multi-Stage – Motor dependent parts

Pos	Qty	Denomination	IEC200	IEC250
2	1	Shroud	9612593801	9612593804
4	4	Screw	9611993243	9611993242
9	1	Compression ring with thread	9612133607	9612133608
13	1	Compression ring without thread	9612133707	9612133708
15	6	Screw	9611993198	9611993266
15a	6	Washer	9611993199	9611993199
11	1	Shaft incl. pin, (pos.8) LKH122	9612592101	
	1	Shaft incl. pin, (pos.8) LKH123	9612592102	9612592202
	1	Shaft incl. pin, (pos.8) LKH124	9612592103	9612592203
10	1	Connex pin, for flushed shaft seal	9611990622	9611990622
17	1	Safety guard set	9614077404	9614077418
	1	Safety Guard left new	9615270401	9615270501
	1	Safety Guard right new	9615270411	9615270511
	1	Top Plate new	9615271601	9615271701
16	1	Screw for safety guard	9611993239	9611993239
18	1	Adaptor	9612342701	9612591501
19	4	Screw for adaptor	9611992164	
8	4	Washer for adaptor	9611991886	
7	4	Nut for adaptor	9611992160	
19	8	Screw for adaptor		9611992200
8	8	Washer for adaptor		9611991886
7	8	Nut for adaptor		9611992160
55	1	Support bar, right	9612342201	
54	1	Support bar, left	9612342201	
52	4	Leg	9612396701	
50	4	Nut	9611990587	9611990935
51	4	Spring washer	9611990676	9611993267
58	4	Screw	9611993680	9611993268
57	4	Washer	9611990703	9611993269
53	4	Screw	9611991907	
59	4	Pivot screw	9611991763	
60	2	Leg bracket		9612518401
61	4	Nut for leg		9611993260
62	4	Screw for leg		9612518501



LKH Multi-Stage – Motor dependent parts

Pos	Qty	Denomination	2.2 kW	3 kW	4 kW
			IEC90	IEC100	IEC112
1	1	Motor ABB 3000rpm, - LKH110	9614303004	9614303005	9614303006
	1	Motor ABB 3000rpm special bearing, - LKH110P	9614289501		9614289502

Pos	Qty	Denomination	5.5 kW	7.5 kW	11 kW
			IEC132	IEC132	IEC160
1	1	Motor ABB 3000rpm, - LKH110	9614303007	9614303008	9614303009
	1	Motor ABB 3000rpm special bearing, - LKH110P	9614289503	9614289504	9614289505

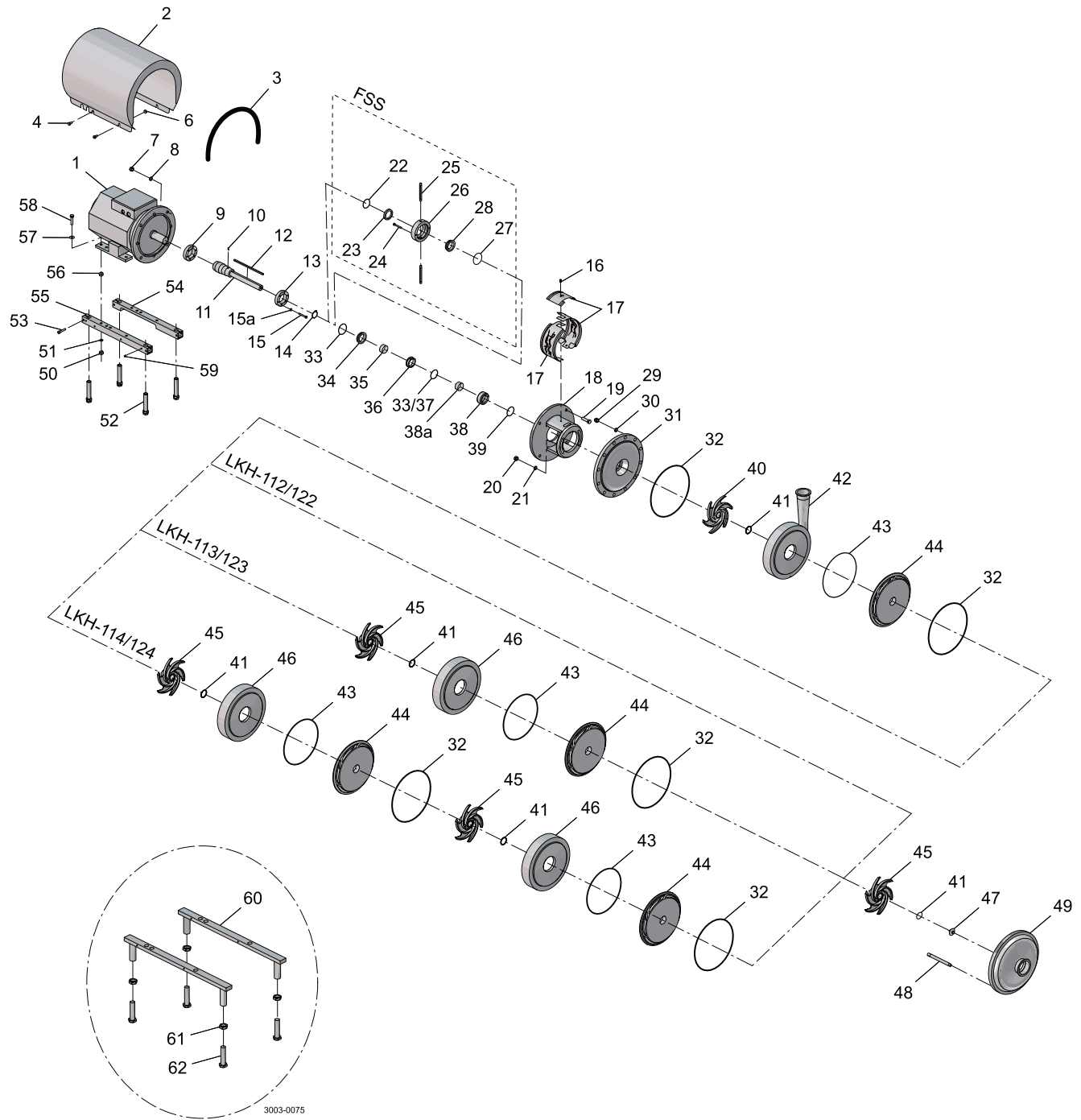
Pos	Qty	Denomination	15 kW	18.5 kW	22 kW
			IEC160	IEC160	IEC180
1	1	Motor ABB 3000rpm, - LKH110	9614303010	9614303011	9614303012
	1	Motor ABB 3000rpm special bearing, - LKH110P	9614289506	9614289507	9614289508
	1	Motor ABB 3000rpm special bearing, - LKH120			9614289509

Pos	Qty	Denomination	30 kW	37 kW	45 kW
			IEC200	IEC200	IEC200
1	1	Motor ABB 3000rpm special bearing, - LKH120	9614289510	9614289511	9614289512

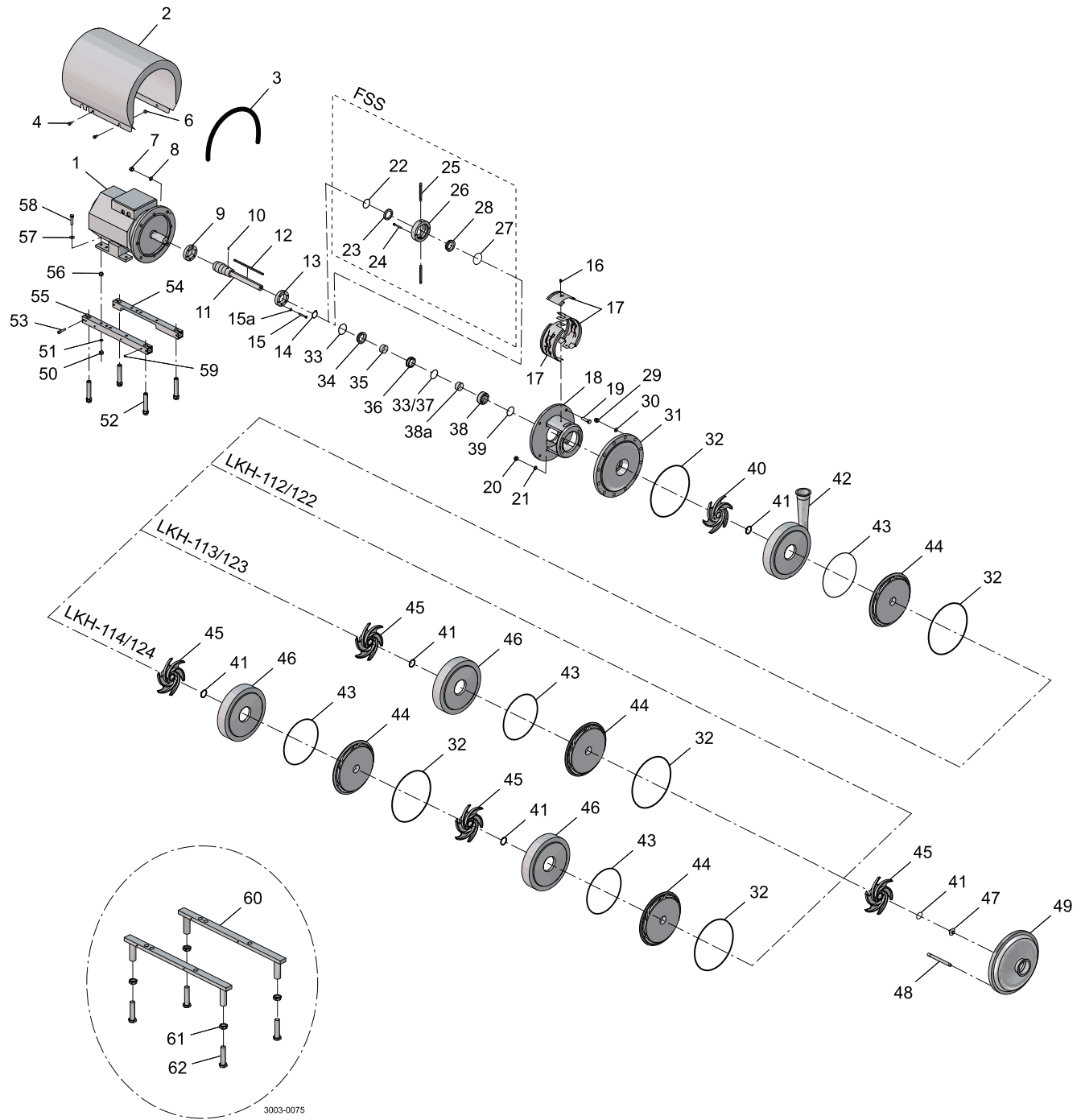
Pos	Qty	Denomination	55 kW	75 kW
			IEC250	IEC250
1	1	Motor ABB 3000rpm special bearing, - LKH120	9614289513	9614289514

3 ~, 50 Hz, 230VD/400-415VY - Standard ≤ 22 kW and 400-415VD/690VY Standard > 22 kW

3 ~, 60 Hz, 440-460VY - Standard ≤ 22 kW and 440-460VD Standard > 22 kW



Pos	Qty	Denomination	LKH-	LKH-
			112/113/114	122/123/124
			LKH-112P/ 113P/114P	
60	1	Set of 8 springs for rotating sealhousing (incl. In pos 38)	9611995848	9911995849
35	1	Spacing ring	9612362501	9612362503
38	1	Rotating seal housing	9612362401	9612604501
Parts for flushed shaft seal				
22	◆○	1 O-ring, EPDM	9611992754	9611993586
23	◆○	1 Sleeve		
24		2 Screw	9611990203	9611994038
25		2 Tube	9612358901	9612358909
26		1 Seal housing, for flushed seal	9612362601	9612362603
27	◆○	1 O-ring, EPDM	9611992753	9611992753
28	◆○	1 Lip seal	9611992860	9611993587



Pos	Qty	Denomination	LKH- 112/113/114, LKH-112P/ 113P/114P EPDM	LKH- 112/113/114, LKH-112P/ 113P/114P NBR	LKH- 112/113/114, LKH-112P/ 113P/114P FPM
-----	-----	--------------	--	---	---

Single shaft seal C/SIC

□○		Shaft seal complete	9612362201	9612362202	9612362203
33	1	O-ring			
34	1	Stationary seal ring, Sic.			
36	1	Rotating seal ring, Carbon			
37	1	Quad ring			
38a	1	Support ring, PTFE			
39	1	Quad ring			

Single shaft seal SiC/SIC

◆■		Shaft seal complete	9612362204	9612362205	9612362206
33	1	O-ring			
34	1	Stationary seal ring, Sic.			
36	1	Rotating seal ring, SIC			
37	1	Quad ring			
38a	1	Support ring, PTFE			
39	1	Quad ring			

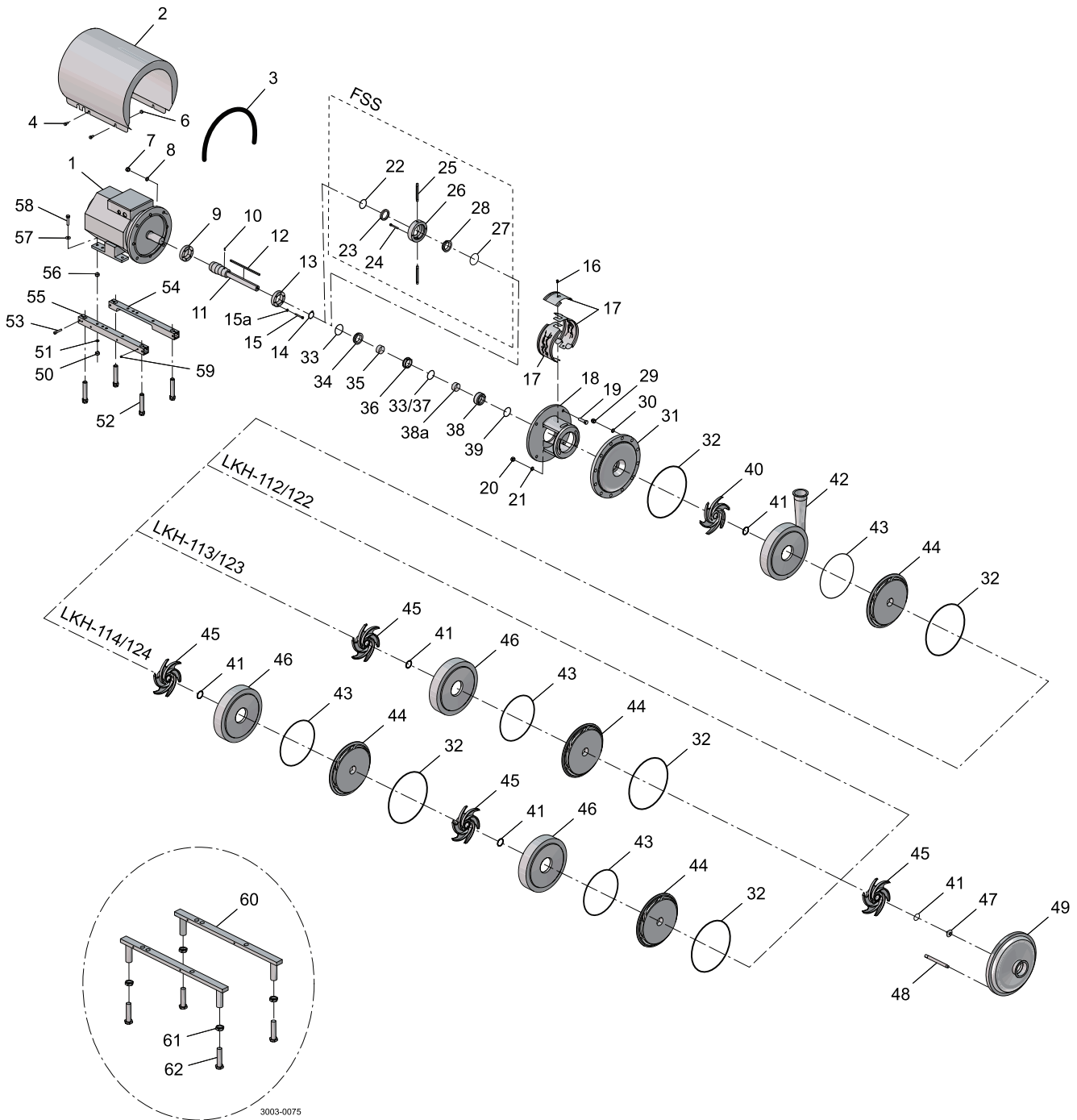
Pos	Qty	Denomination	LKH- 122/123/124, EPDM	LKH- 122/123/124, NBR	LKH- 122/123/124, FPM
-----	-----	--------------	------------------------------	-----------------------------	-----------------------------

Single shaft seal C/SIC

□○		Shaft seal complete	9612602401	9612602402	
33	1	O-ring, EPDM			
34	1	Stationary seal ring, Sic.			
36	1	Rotating seal ring, Carbon			
37	1	Quad ring			
38a	1	Support ring, PTFE			
39	1	Quad ring			
33	1	O-ring (EPDM)			

Single shaft seal SiC/SIC

◆■		Shaft seal complete	9612602404	9612602405	
33	1	O-ring, EPDM			
34	1	Stationary seal ring, Sic.			
36	1	Rotating seal ring, SIC			
37	1	Quad ring			
38a	1	Support ring, PTFE			
39	1	Quad ring			
33	1	O-ring (EPDM)			



		EPDM	NBR
Service kit for single shaft seal C/SIC			
□	Service kit C/SIC LKH-112/ LKH-112P	9611922096	9611922097
	Service kit C/SIC LKH-113/ LKH-113P	9611922102	9611922103
	Service kit C/SIC LKH-114/ LKH-114P	9611922108	9611922109
	Service kit C/SIC LKH-122	9611922409	9611922410
	Service kit C/SIC LKH-123	9611922934	9611922935
	Service kit C/SIC LKH-124	9611922940	9611922941
Service kit for single shaft seal SIC/SIC			
■	Service kit SIC/SIC LKH-112/ LKH-112P	9611922655	9611922656
	Service kit SIC/SIC LKH-113/ LKH-113P	9611922661	9611922662
	Service kit SIC/SIC LKH-114/ LKH-114P	9611922667	9611922668
	Service kit SIC/SIC LKH-122	9611922673	9611922674
	Service kit SIC/SIC LKH-123	9611922679	9611922680
	Service kit SIC/SIC LKH-124	9611922685	9611922686
Service kit for flushed shaft seal C/SIC			
○	Service kit C/SIC LKH-112/ LKH-112P	9611922099	9611922100
	Service kit C/SIC LKH-113/ LKH-113P	9611922105	9611922106
	Service kit C/SIC LKH-114/ LKH-114P	9611922111	9611922112
	Service kit C/SIC LKH-122	9611922412	9611922413
	Service kit C/SIC LKH-123	9611922937	9611922938
	Service kit C/SIC LKH-124	9611922943	9611922944
Service kit for flushed shaft seal SIC/SIC			
◆	Service kit SIC/SIC LKH-112/ LKH-112P	9611922658	9611922659
	Service kit SIC/SIC LKH-113/ LKH-113P	9611922664	9611922665
	Service kit SIC/SIC LKH-114/ LKH-114P	9611922670	9611922671
	Service kit SIC/SIC LKH-122	9611922676	9611922677
	Service kit SIC/SIC LKH-123	9611922682	9611922683
	Service kit SIC/SIC LKH-124	9611922688	9611922689

Parts marked with □◆○■ are included in the service kits.

Recommended Spare Parts: Service kits.

Conversion single to flushed shaft seal : Please order Flushed service kit + pos. 24+25+26

(900732/6)

How to contact Alfa Laval

Contact details for all countries are continually updated on our website.

Please visit www.alfalaval.com to access the information directly.

© Alfa Laval Corporate AB

This document and its contents is owned by Alfa Laval Corporate AB and protected by laws governing intellectual property and thereto related rights. It is the responsibility of the user of this document to comply with all applicable intellectual property laws. Without limiting any rights related to this document, no part of this document may be copied, reproduced or transmitted in any form or by any means (electronic, mechanical, photocopying, recording, or otherwise), or for any purpose, without the expressed permission of Alfa Laval Corporate AB. Alfa Laval Corporate AB will enforce its rights related to this document to the fullest extent of the law, including the seeking of criminal prosecution.