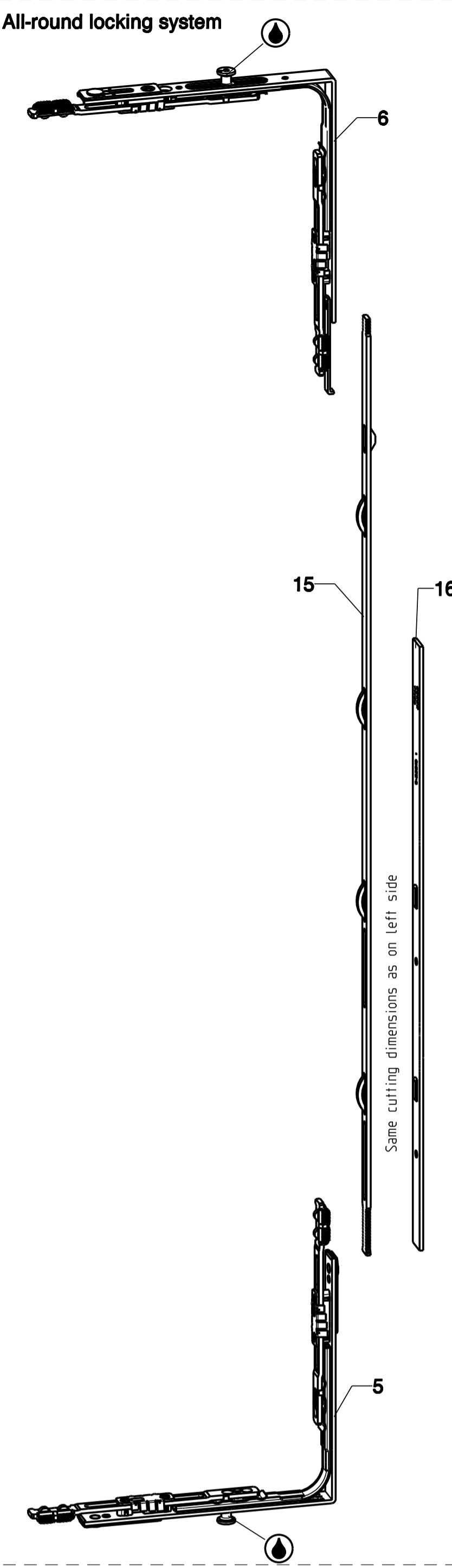


All-round locking system



Item	Description	Article no.	Piece		Contents of basic box		
			Standard locking	All-round locking [1]	UNITAS 5 Bo K-13353-00-0	UNITAS 7 Bo K-13354-00-0	UNITAS 10 K-13355-00-0
1	Pair of horizontal pivot	UNITAS 5 Bo 2-20702-00-P	1	-	1	-	-
		UNITAS 7 Bo 2-20683-00-P	1	-	1	-	-
		UNITAS 10 2-20671-00-P	1	-	1	-	-
2	Handle Dirigent-F. 10 mm Plugs	□ 7 x 20 6-28112-20-0	1	-	1	-	-
		□ 7 x 25 6-28112-25-0	1	-	1	-	-
3	Countersunk screw DIN 965	M5 x 30 9-13255-30-0	2	-	2	-	-
		M5 x 35 9-13255-35-0	2	-	2	-	-
4	Edge protector	9-26269-00-0	1	1	1	1	1
5	Corner transmission, bottom	ML 1 6-32021-00-0	1	2	1	1	1
6	Corner transmission, top	ML 1 6-35273-01-0	1	2	1	1	1
7	Extension piece 90°, bottom	ML 1 6-32104-00-0	1	-	1	1	1
8	Extension piece 180°, top	ML 1 6-34451-00-0	1	-	1	1	1
9	Locking plates, bottom	RD/G 35/15 9-32732-00-0	-	-	4	-	-
		45/20 9-32733-00-0	-	-	-	4	-
		9-32734-00-0	-	-	-	-	4
		SRW 576-950	-	-	2	-	-
		SRW 951-1450	-	-	3	-	-
10	Locking plates, top	MD/G 25/15 9-32730-00-0	-	-	4	-	-
		30/20 9-32731-00-0	-	-	-	4	4
		SRW 576-950	-	-	2	-	-
		SRW 951-1450	-	-	3	-	-
		SRW 1451-1950	-	-	4	-	-
11	Locking plate slit ventilation	RD 35 9-45939-35-0	1	-	-	-	
		RD 40 9-45939-40-0	1	-	1	-	
		RD 45 9-45939-45-0	1	-	-	1	
		SRW 576-950	-	-	-	-	
		SRW 951-1450	-	-	-	-	
12	Gear 30 GV	Length 630	-	-	1	-	-
		Length 1130	-	-	1	-	-
		Length 1630	-	-	2	-	-
		Length 2130	-	-	3	-	-
		Length 2630	-	-	2	-	-
13	Centre piece	Length 630	-	-	1	-	-
		Length 1130	-	-	1	-	-
		Length 1630	-	-	2	-	-
		Length 2130	-	-	3	-	-
		Length 2630	-	-	2	-	-
14	Extension 500	SRW 2451-2950	4	-	-	-	
		Length 500	1	-	-	-	
15	Vertical rod	SRH 700-950	1	2	-	-	
		Length 630	-	-	-	-	
		SRH 951-1200	-	-	-	-	
		Length 880	-	-	-	-	
16	Cover rail	SRH 1201-1700	1	2	-	-	
		Length 1380	-	-	-	-	
		SRH 1701-2200	-	-	-	-	
		Length 1880	-	-	-	-	
17	Lift stop for all-round locking system	9-33432-00-0	-	1	-	-	

For optional parts see sheet 5

[1] From SRW 1951 use of all-round locking system

Abbreviations:

Sash rebate width	SRW
Sash rebate height	SRH
Rebate height	FRH
Rebate depth	RD
Gear position	G
Milling depth locking plates top	MD
Middle lock	ML

Hardware fixing:

Horizontal pivot UNITAS 5 Bo and 7 Bo: Countersunk screws DIN 7997 4.5 x 30
 Horizontal pivot UNITAS 10: Countersunk screws DIN 7997 5 x 35
 Rebate stay: Countersunk screws 4.5 x 30 and 4 x 30
 Locking system: Countersunk screws 4 x 30

The fastening screws specified are only a recommendation based on our experience.
 The responsibility for the appropriate fastening of hardware components rests with the window / window door fabricator.

Mounting instructions

1 Preparing the sash

- 1.1 Mill recess for gear case and drill holes for handle.
- 1.2 Drill holes $\varnothing 7$ with drilling jig item 34 for dowel pins of UNITAS 5 Bo and UNITAS 7 Bo pivots, or mill recesses for UNITAS 10 pivots.
- 1.3 Mill recess for rebate stay 27 item 24/26, if required.
- 1.4 If required, mill recess in vertical cover strip for edge protector item 31 (for locking detent 180° item 30).

2 Cutting optional parts

- 2.1 Cut gear item 12 and centre piece item 13 equally on both side according to indicated formula.
- 2.2 Cut vertical rod item 15 according to indicated formula. For cuttings exceeding 250 mm start at marking notch.
- 2.3 Cut cover rail item 16 according to indicated formula. For use of rebate stays item 23/25 cut more accordingly. For cuttings exceeding 125 mm start at marking notch.

3 Hardware assembly on sash

- 3.1 Insert corner transmissions at top (item 6) and bottom (item 5) and fasten with screws.
- 3.2 Insert extension pieces at top (item 8) and bottom (item 7) and fasten with screws (does not apply to all-round locking system).
- 3.3 If required slide rod guide item 37 onto gear item 12, centre piece item 13 and extension piece item 14.
- 3.4 If required glue anti-drill plate item 41 on outside of gear case.
- 3.5 Insert gear - for SRW exceeding 2451 mm insert extensions item 14 between gear and extension piece respectively corner transmission - and fix with screws.
- 3.6 If required cut recess for ramp item 33 for lifting roller item 32 and mount the ramp (in the case of UNITAS 5 Bo through screw hole in gear). Verify position of bottom locking plates item 9.
- 3.7 Insert centre piece - for SRW exceeding 2451 mm insert extensions item 14 between centre piece and extension piece respectively corner transmission - and fix with screws.

4 Preparing the frame

- 4.1 Mount rebate strips.
- 4.2 Mill recesses for locking plates with cutter $\varnothing 16$.
- 4.3 If required mill recesses in rebate strips for packers for rebate stay item 28 (using milling jig 29) respectively for frame parts of rebate stays items 23-26. The lockable rebate stays item 25/26 require a $\varnothing 14$ bore.
- 4.4 If required mill recess for lifting roller item 32. Copy position from ramp item 33 on sash.
- 4.5 Drill holes $\varnothing 7$ with drilling jig item 34 for dowel pins of UNITAS 7 Bo and UNITAS 5 Bo pivots, or mill recesses for UNITAS 10 pivots.
- 4.6 Mill recess for edge protector item 4 into horizontal cover strip.

5 Hardware assembly on frame

- 5.1 Fasten sash parts of pivots and firmly tighten screws.
- 5.2 Mount edge protector item 4 in horizontal cover strip.
- 5.3 Mount cover strips.
- 5.4 Mount locking plates at top (item 10) and bottom (item 9), and locking plate for slit ventilation item 11.
- 5.5 If required mount lifting rollers item 32.
- 5.6 If required mount frame parts of rebate stays item 23-26 with packers item 28.

6 Final assembly

- 6.1 Roll in gaskets item 21 with gasket roller item 22.
- 6.2 Hinge sash on frame and fasten by mounting the brake nipples.
- 6.3 Adjust sash brakes (1st and 2nd pivotal point). With UNITAS 10 activate 22° lock by means of open end wrench item 20, if required.
- 6.4 If rebate stays item 23-26 are used, hinge arms in slide way on frame parts and lock them.
- 6.5 If required fasten locking detent for 180° cleaning position item 30 to frame.
- 6.6 Very proper functioning.

Lubricate all locking and sliding points with lubricants free of resin and acid.
 The horizontal pivots must not be lubricated, neither with grease or with oil.

Specify when ordering:

- Horizontal pivot UNITAS 5 Bo, UNITAS 7 Bo and UNITAS 10
- Sash rebate width SRW
- Sash rebate height SRH
- Colour for pivots and handle
- Standard or all-round locking system
- Optional parts

Description		Level		Scale		Modification		Size	
Horizontal pivot UNITAS 5 Bo, UNITAS 7 Bo and UNITAS 10 Bo.		released	Mz	3	%			1	Sheet
Release No.	Mod. No.	Ver.	Draft	15.06.2010	Mn			9-41840-AC-0-GB	
Replacement for --								1/5	

GB

IV 88	IV 92	IV 110
UNITAS 5 Bo	min. 10	min. 10
UNITAS 7 Bo	min. 9	min. 10
UNITAS 10	min. 8	min. 8

Section A-A

Rebate depth RD = 35
MD = 25
G = 15
Sash rebate height SRH
Frame rebate height FRH
vertical gasket (on sash)
vertical gasket (on frame)
Space requirement for sash opened to 180°

	P1	P2
UNITAS 5 Bo	17	19
UNITAS 7 Bo	22	24
UNITAS 10	19	21

UNITAS 5 Bo
drawing shows IV 56(possible with IV 56, IV 68,
IV 78, IV 88, IV 92)

Section A-A

Rebate depth RD = 40
MD = 30
G = 20
vertical gasket (on sash)
vertical gasket (on frame)

UNITAS 7 Bo
drawing shows IV 68(possible with IV 68, IV 78,
IV 88, IV 92, IV 110)

Section A-A

Rebate depth RD = 45
MD = 30
G = 20
vertical gasket (on sash)
vertical gasket (on frame)

UNITAS 10 Bo
drawing shows IV 78(possible with IV 68, IV 78,
IV 88, IV 92, IV 110)

Section B-B

horizontal gasket at top (on frame)
Rebate depth = 35
G = 15
No fitting groove required on right side of sash except for all-round locking system.

Section C-C

horizontal gasket at bottom (on sash)
Rebate depth = 35
G = 15
Sash rebate width SRW

Section B-B

horizontal gasket at top (on frame)
Rebate depth RD = 40
G = 20

Section B-B

horizontal gasket at top (on frame)
Rebate depth RD = 45
G = 20

Profile dimensions

	Gear position G	Rebate depth RD	Milling depth locking plates top MD
UNITAS 5 Bo	15	35	25
UNITAS 7 Bo	20	40	30
UNITAS 10	20	45	30

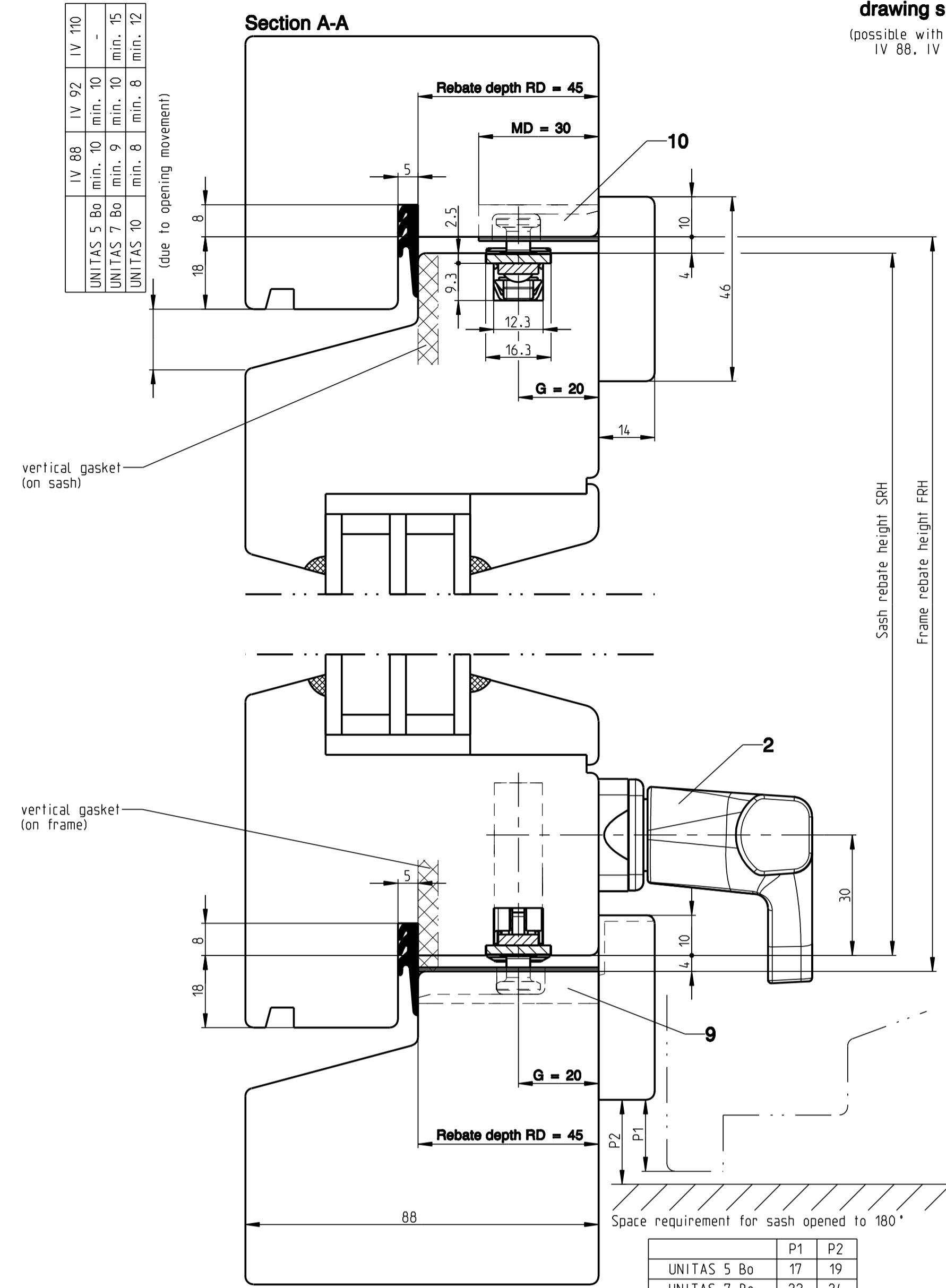
Description
Horizontal pivot UNITAS 5 Bo, UNITAS 7 Bo and UNITAS 10 Bo.

GUBKS FERCO	Release No.	Level	released	Scale	Modification	Size
	Mod. No.	Ver.	Mz			
Drawing No.		Replacement for --		0-41840-AC-0-GB		2/5

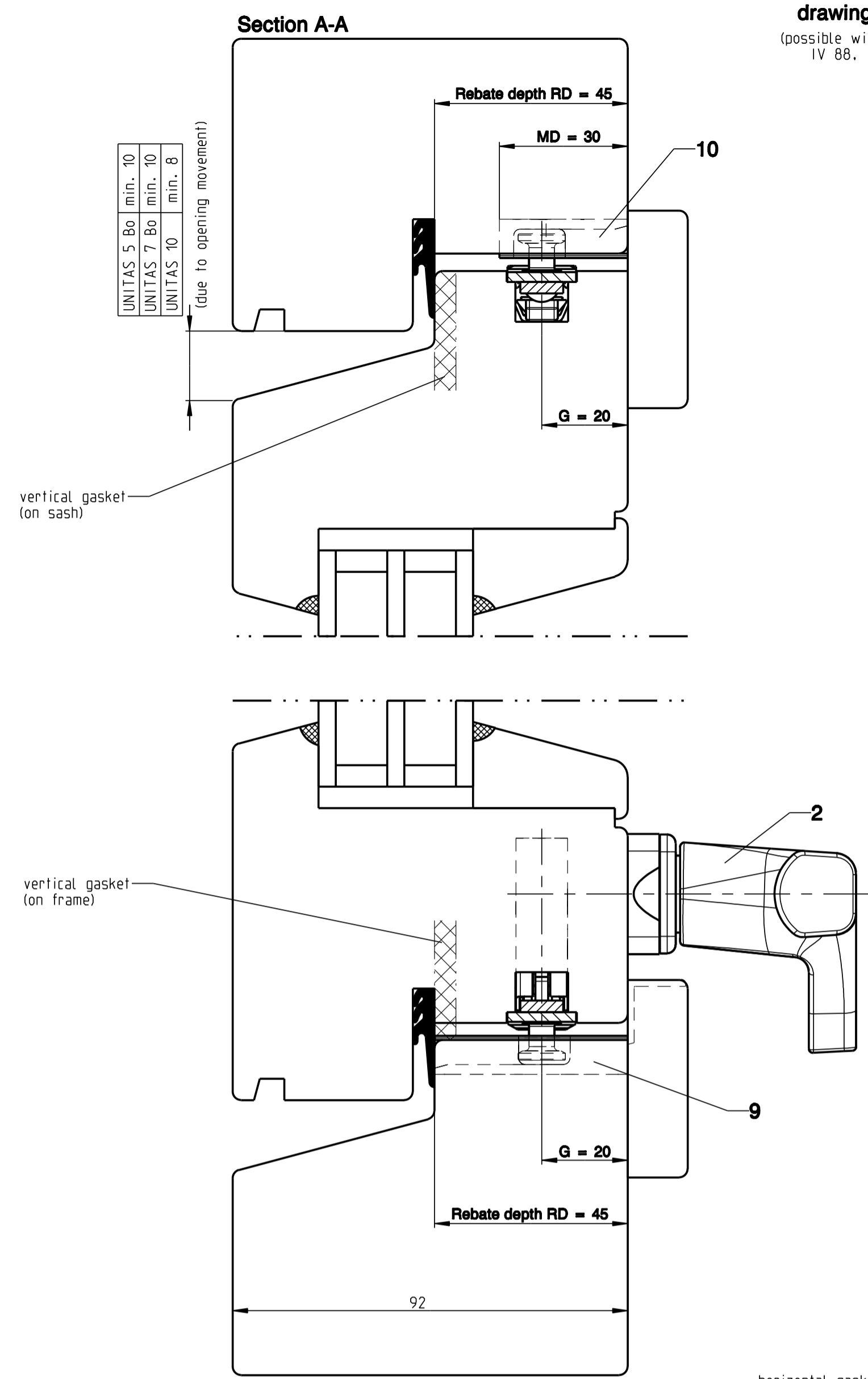
Proprietary rights apply in accordance with ISO 8646.

20080521

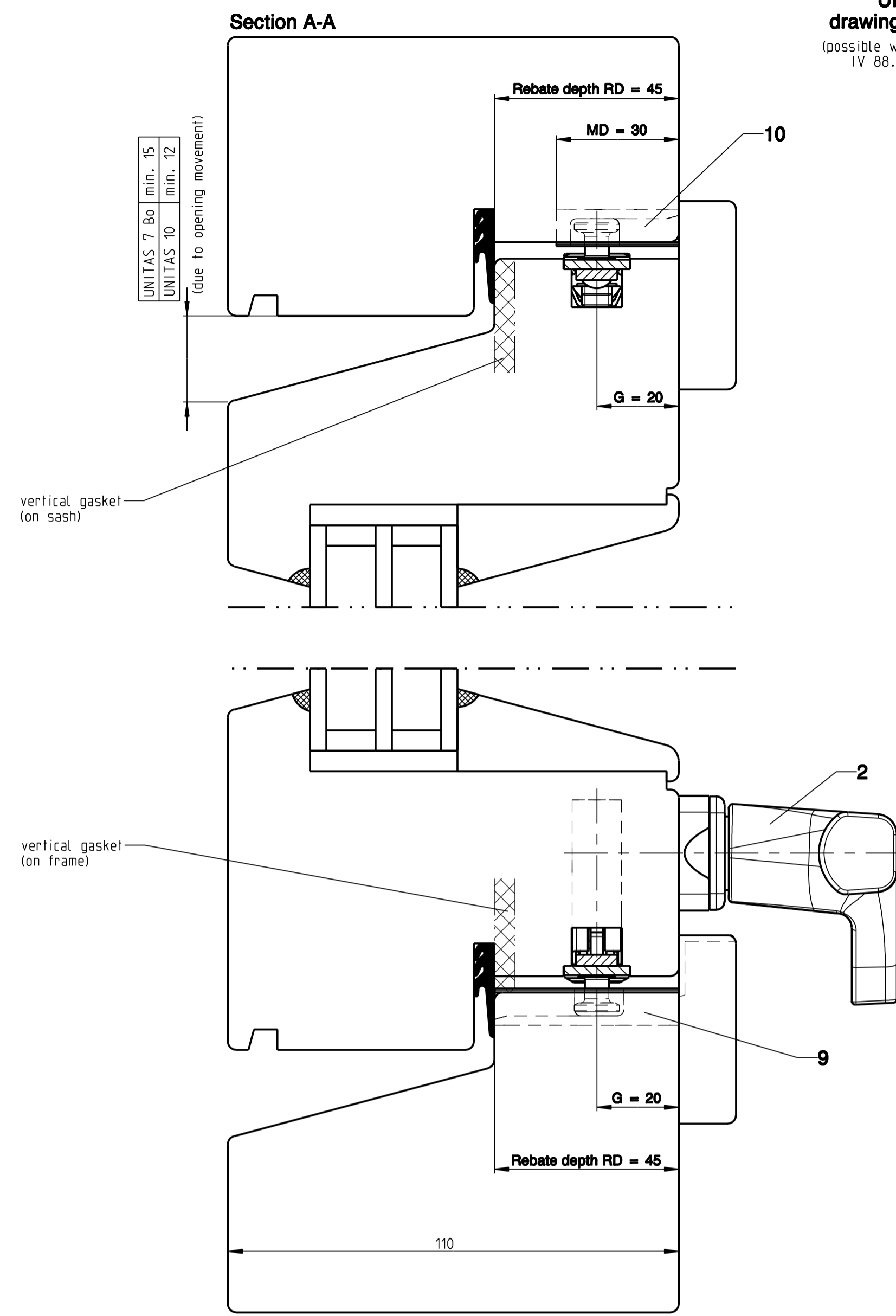
UNITAS 10
drawing shows IV 88
(possible with IV 68, IV 78,
IV 88, IV 92, IV 110)



UNITAS 10
drawing shows IV 92
(possible with IV 68, IV 78,
IV 88, IV 92, IV 110)

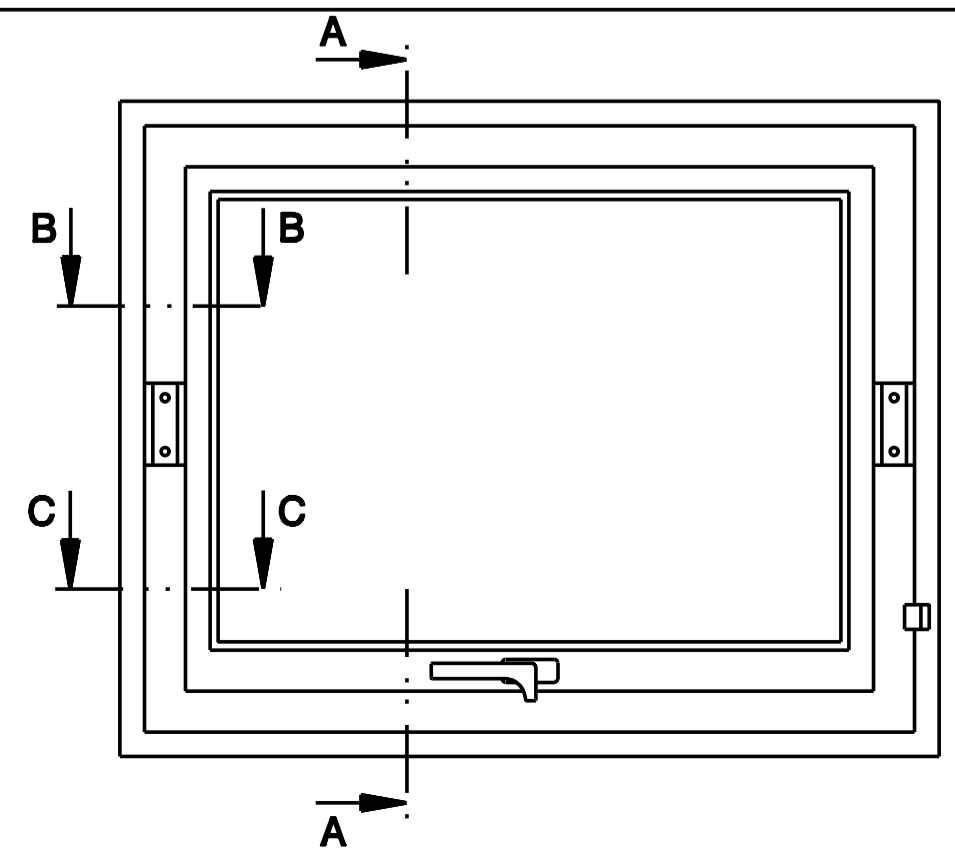


UNITAS 10
drawing shows IV 110
(possible with IV 68, IV 78,
IV 88, IV 92, IV 110)



Proprietary rights apply in accordance with ISO 9006.

20080521



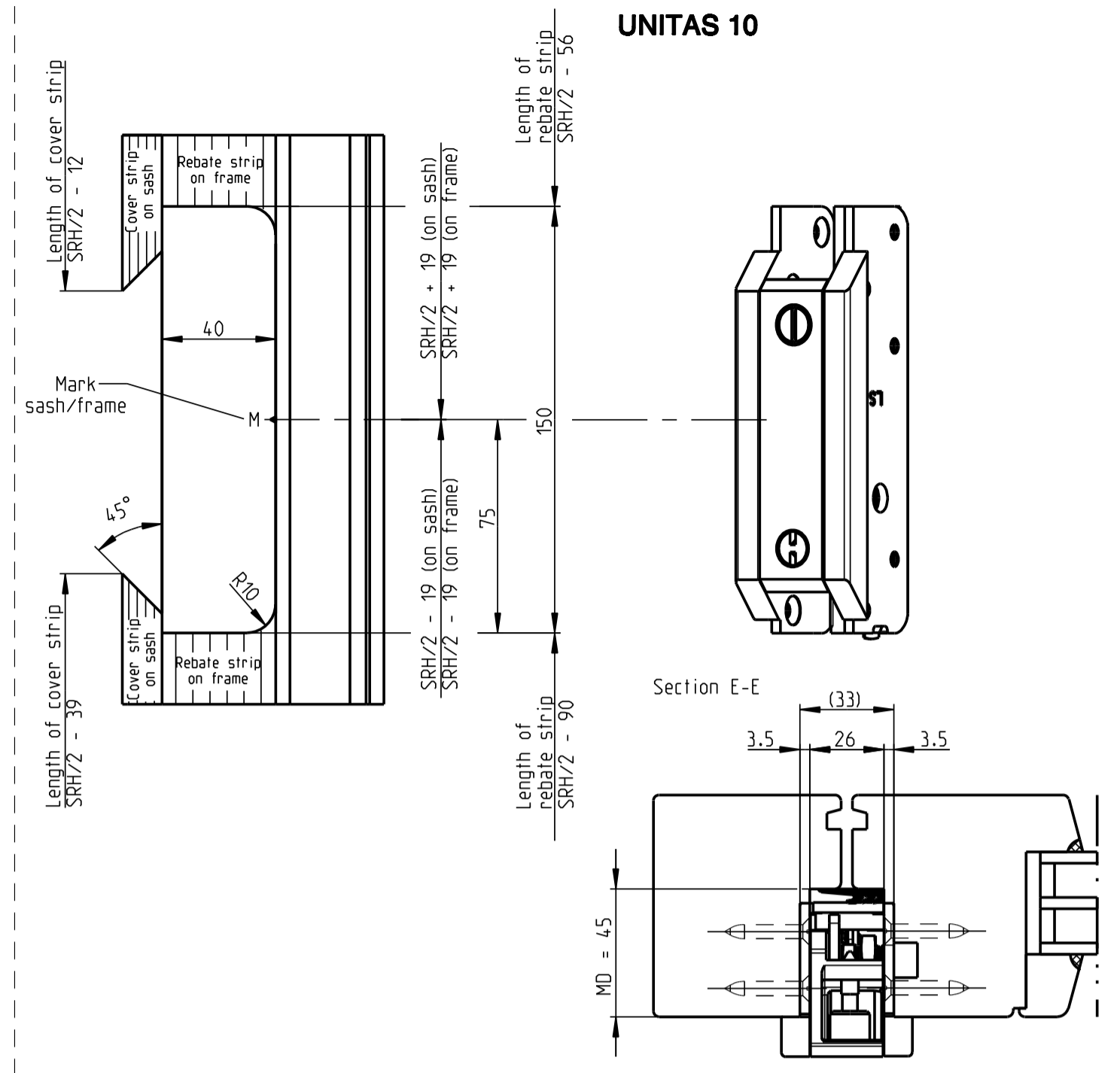
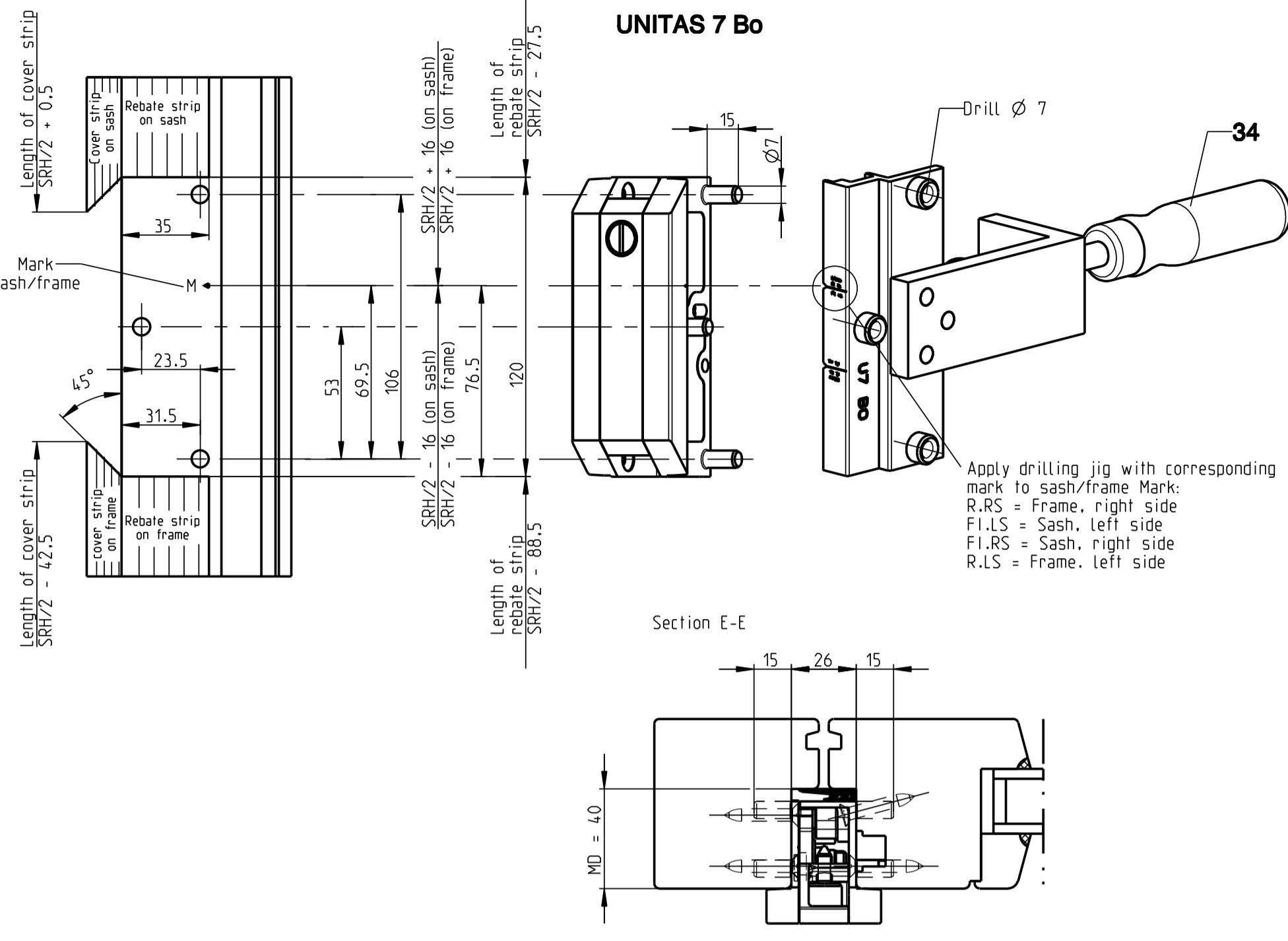
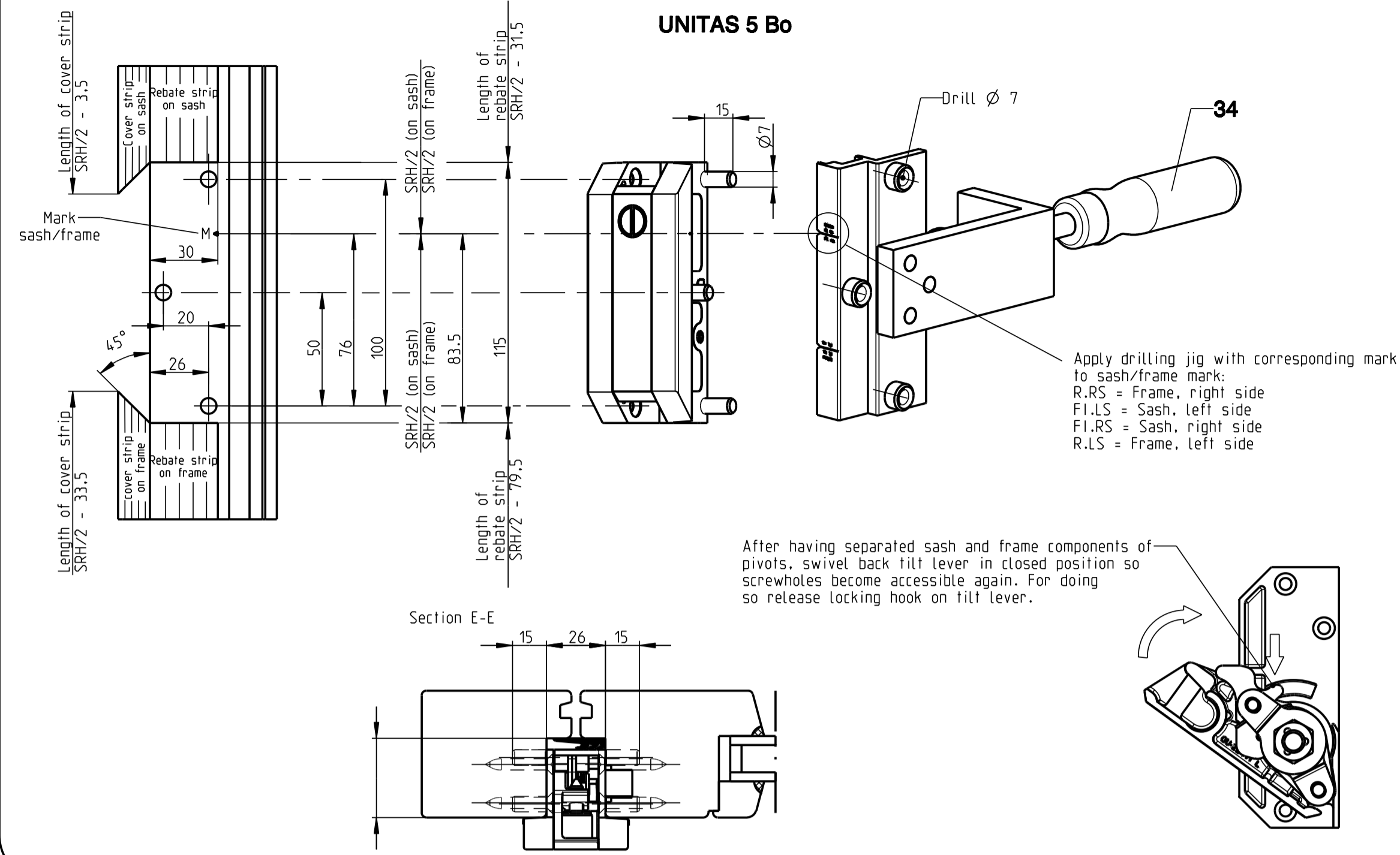
Profile dimensions

	Gear position G	Rebate depth RD	Milling depth locking plates top MD
UNITAS 5 Bo	15	35	25
UNITAS 7 Bo	20	40	30
UNITAS 10	20	45	30

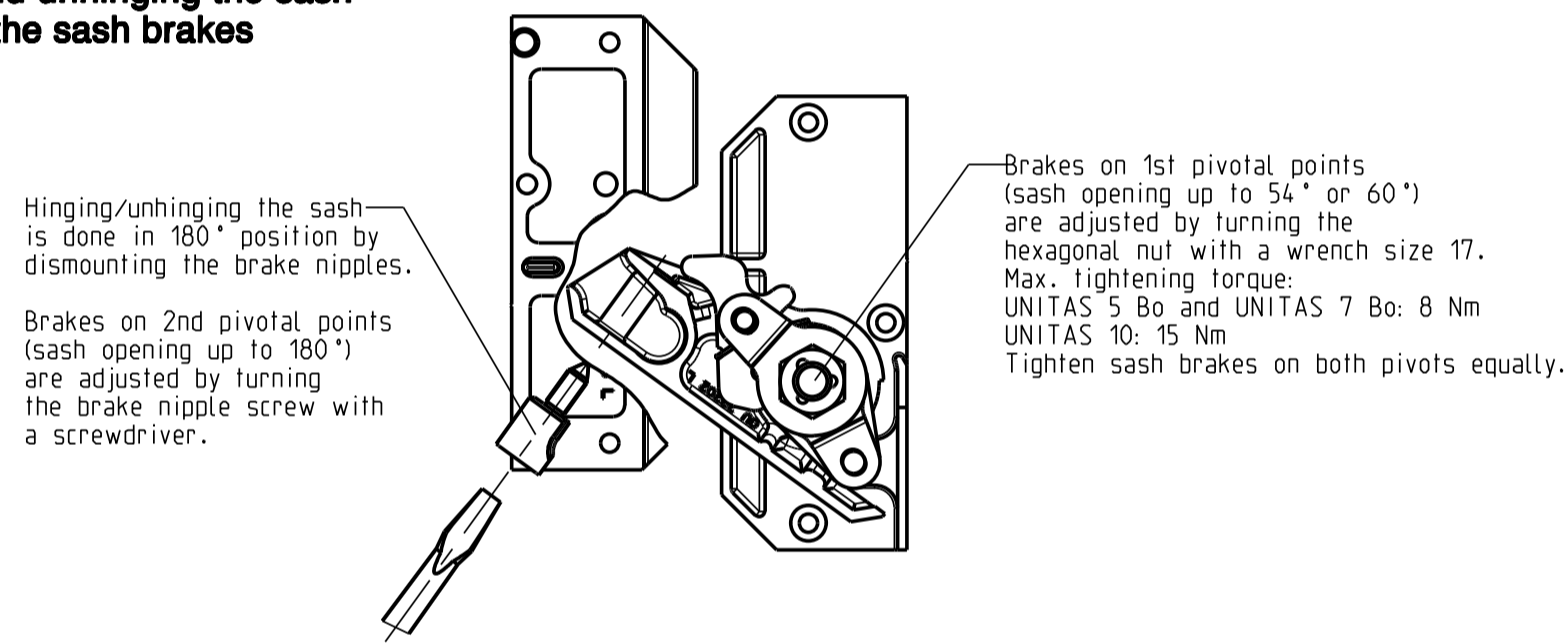
Description
Horizontal pivot UNITAS 5 Bo, UNITAS 7 Bo and UNITAS 10 Bo.

 	Release No.	Level	released	Scale	Modification	Size
	Mod. No.	Ver.	Mz			
Replacement for --		Draft	15.06.2010	Mn	Drawing No.	Sheet
					0-41840-AC-0-GB	3/5

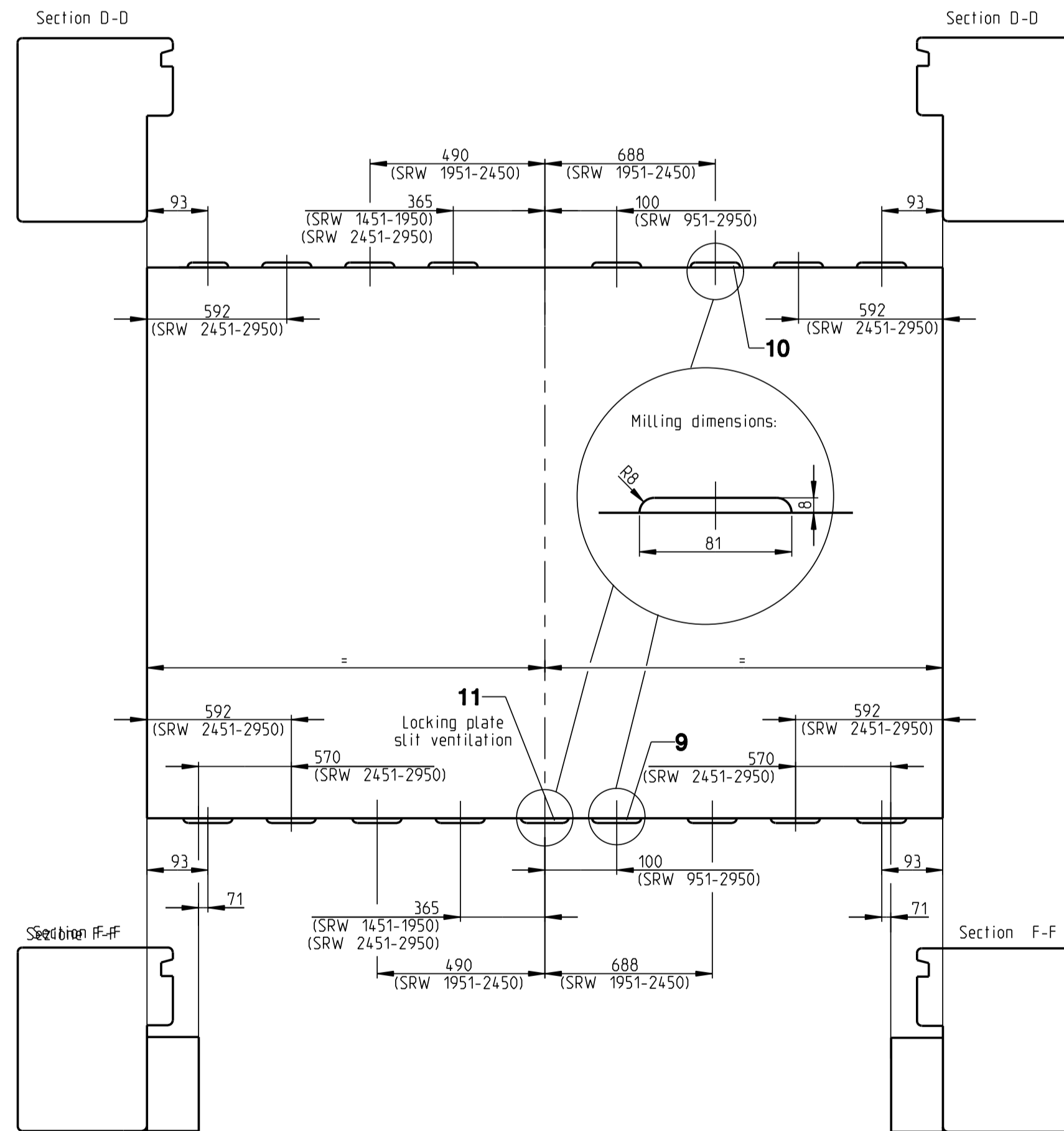
Mounting the pivots / Length of rebate and cover strips



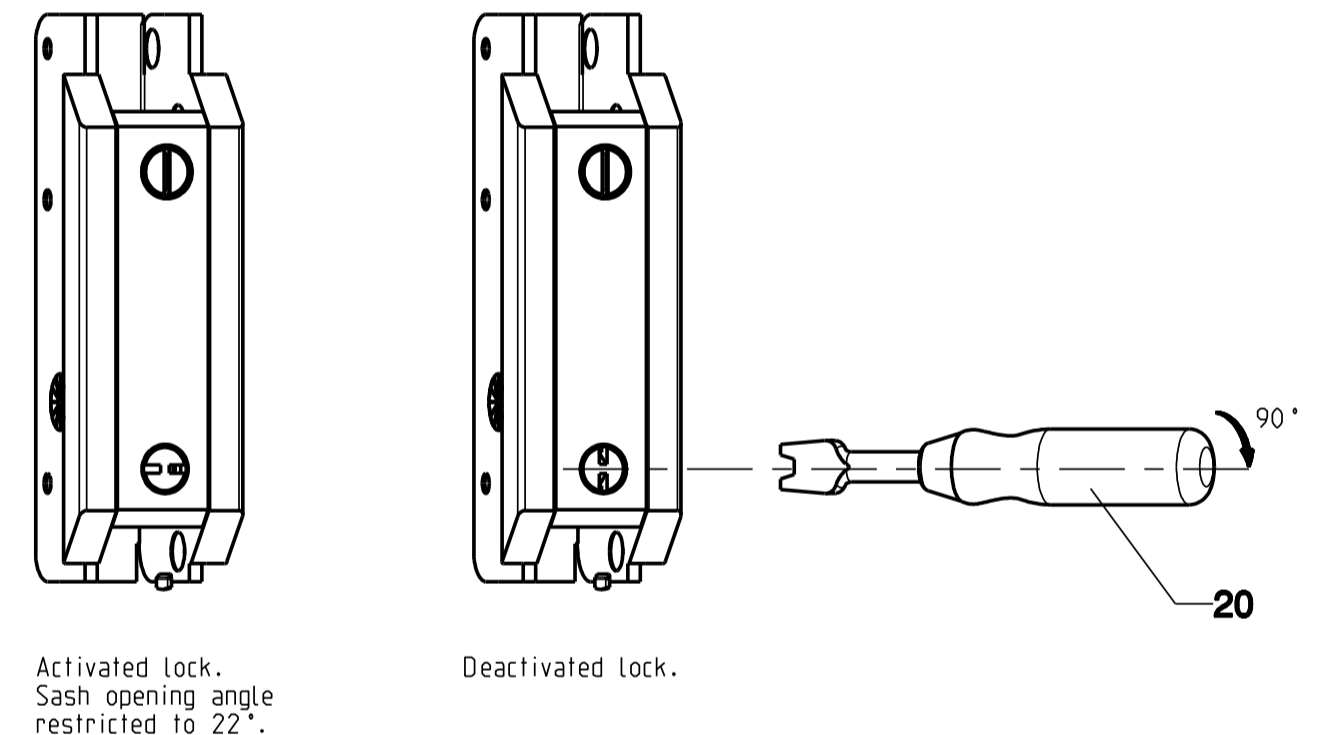
Hinging and unhinging the sash
 Adjusting the sash brakes



Position of locking plates

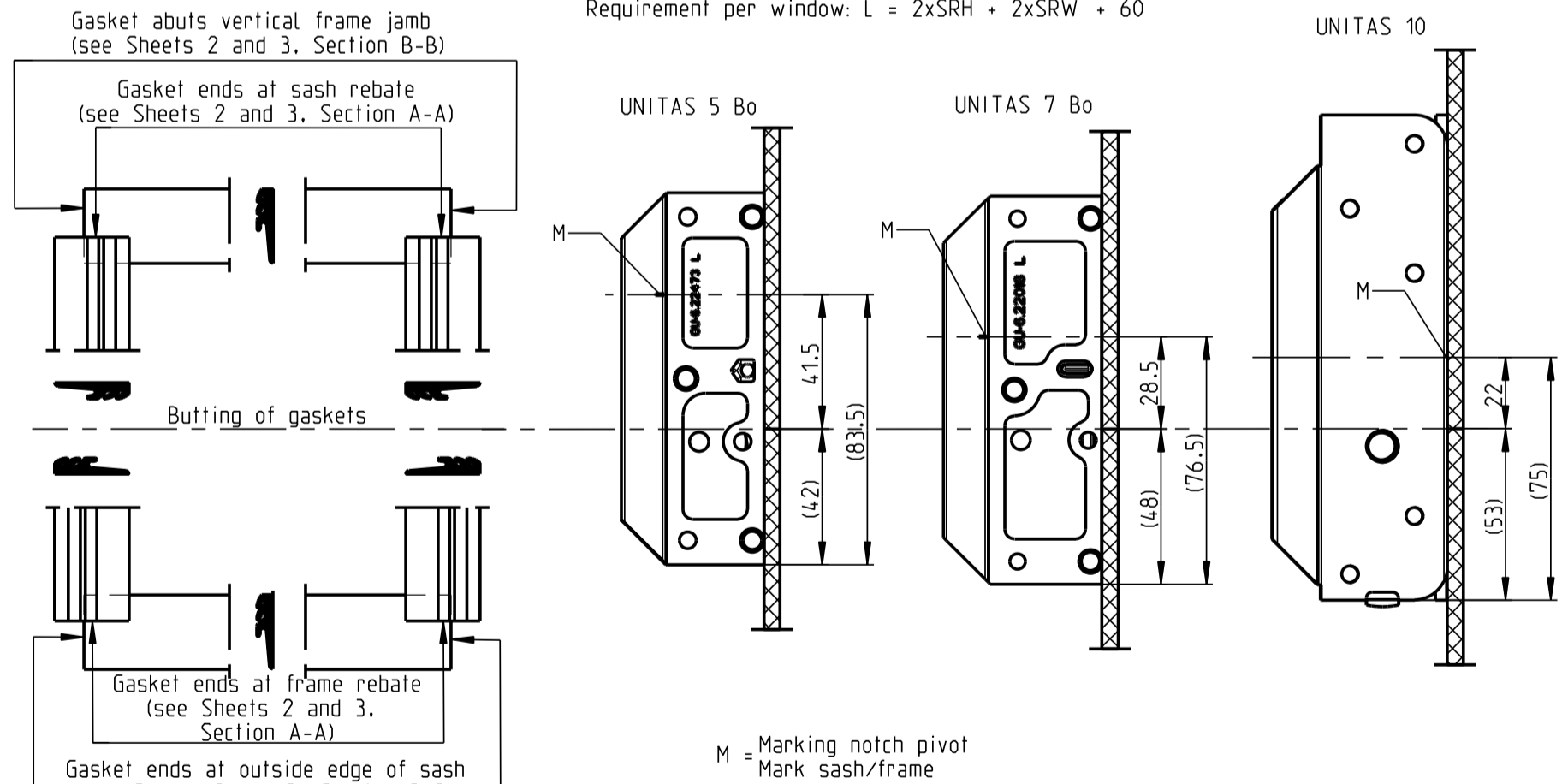


22° lock of horizontal pivot UNITAS 10

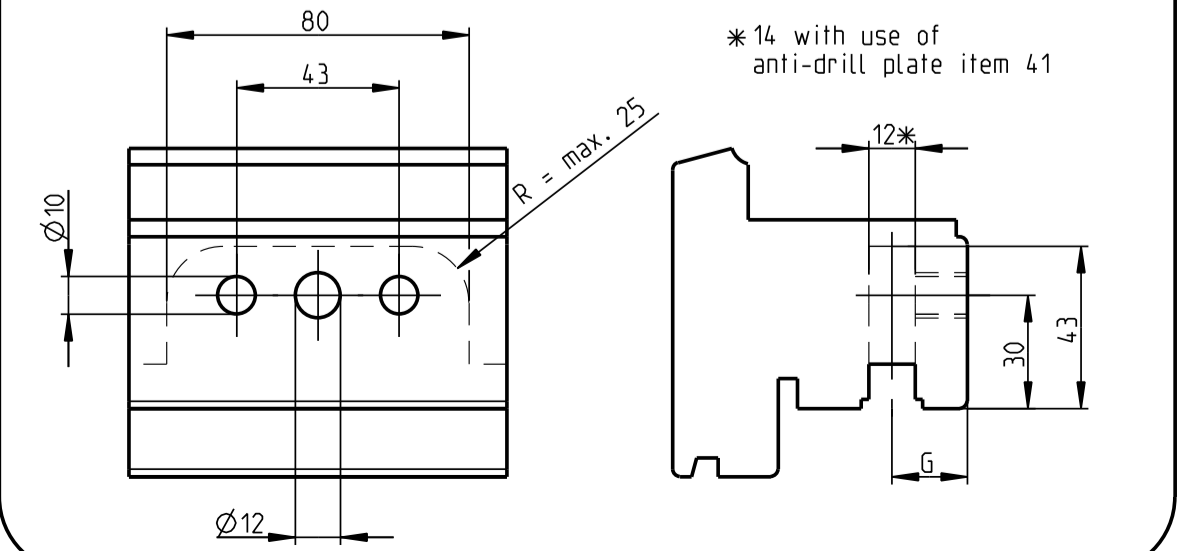


All-round gasket P 828

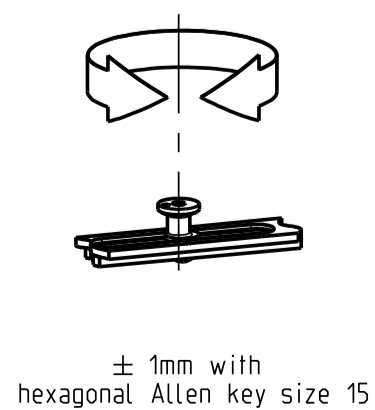
Requirement per window: L = 2xSRH + 2xSRW + 60



Milling recesses for gear case and handle

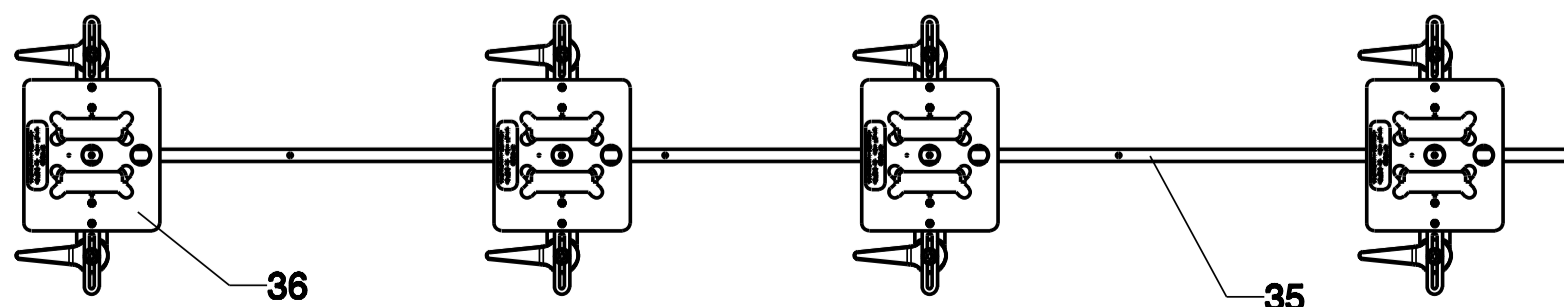


Adjusting the locking pins



Milling recesses for locking plate with milling jigs

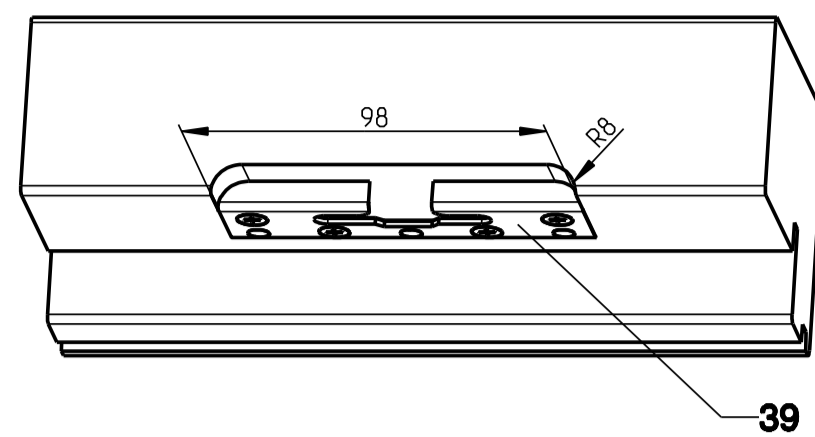
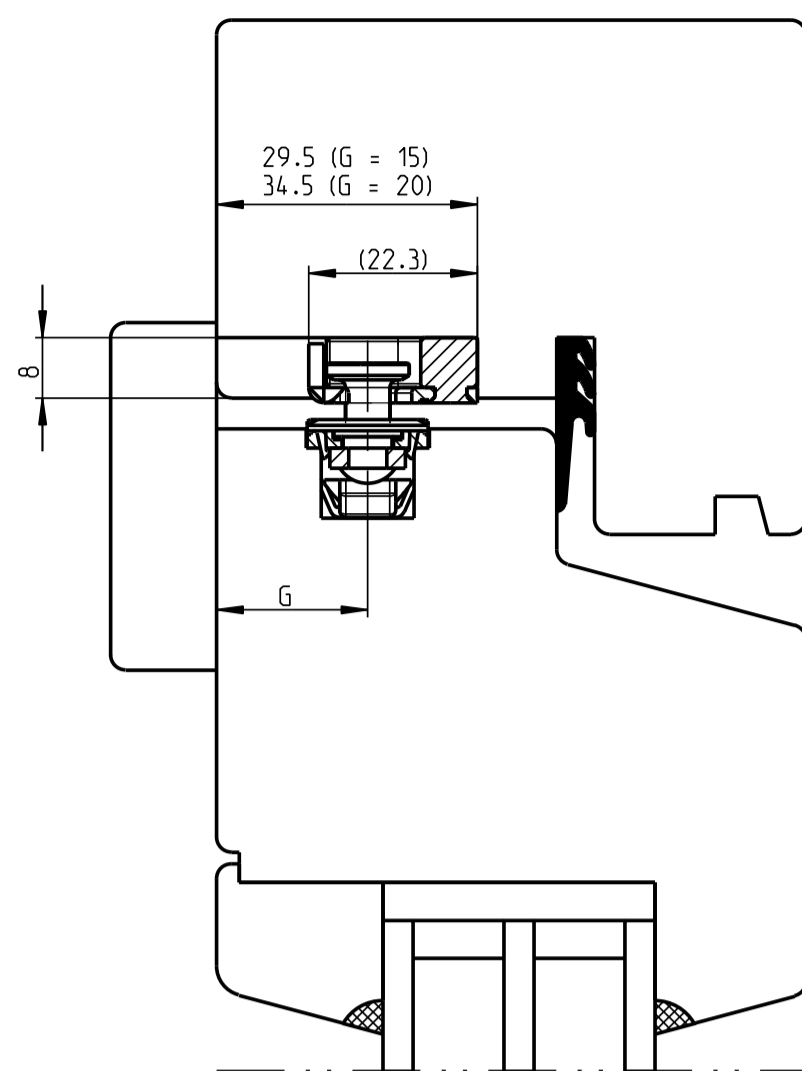
For individual fabrication the recesses for locking plates can be cut with a router using the milling jigs of tilt-turn fittings UNI-JET; cutting is done from the front with the frame jamb placed horizontally (without cover strips). (Milling cutter Ø16, copying ring Ø27)



Description		Horizontal pivot UNITAS 5 Bo, UNITAS 7 Bo and UNITAS 10 Bo.		Scale		Modification		Size	
-		-		-		-		-	
Release No.		Level		released		%		3	
Mod. No.		Ver.		Mz		%		1	
G24345		Draft		15.06.2010		Mn		Sheet	
-		-		-		-		4/5	
Replacement for --		-		-		-		0-41840-AC-0-GB	

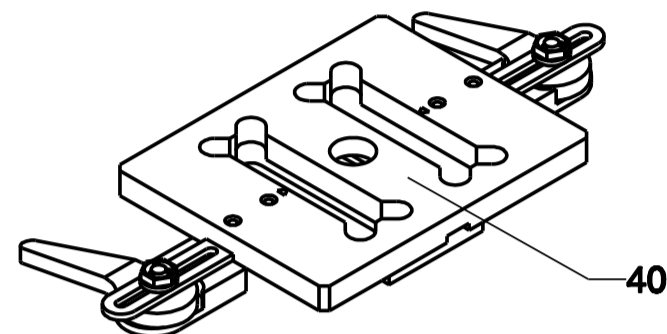
Variant Se

**Milling dimensions for locking plates Se
Section G-G**

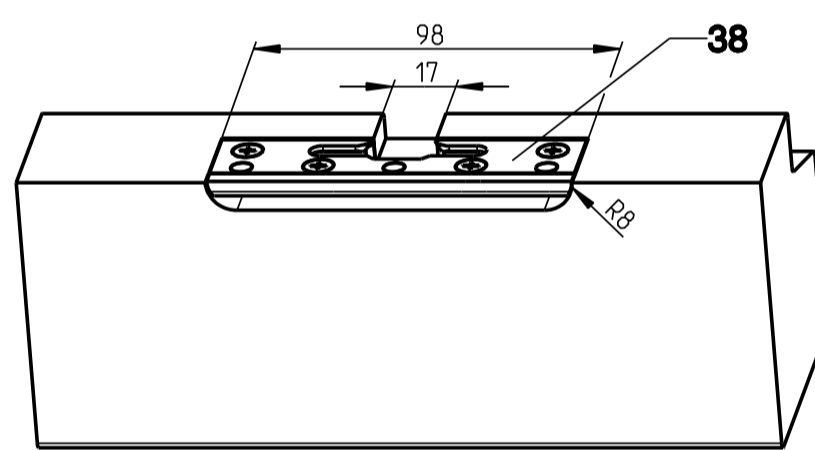
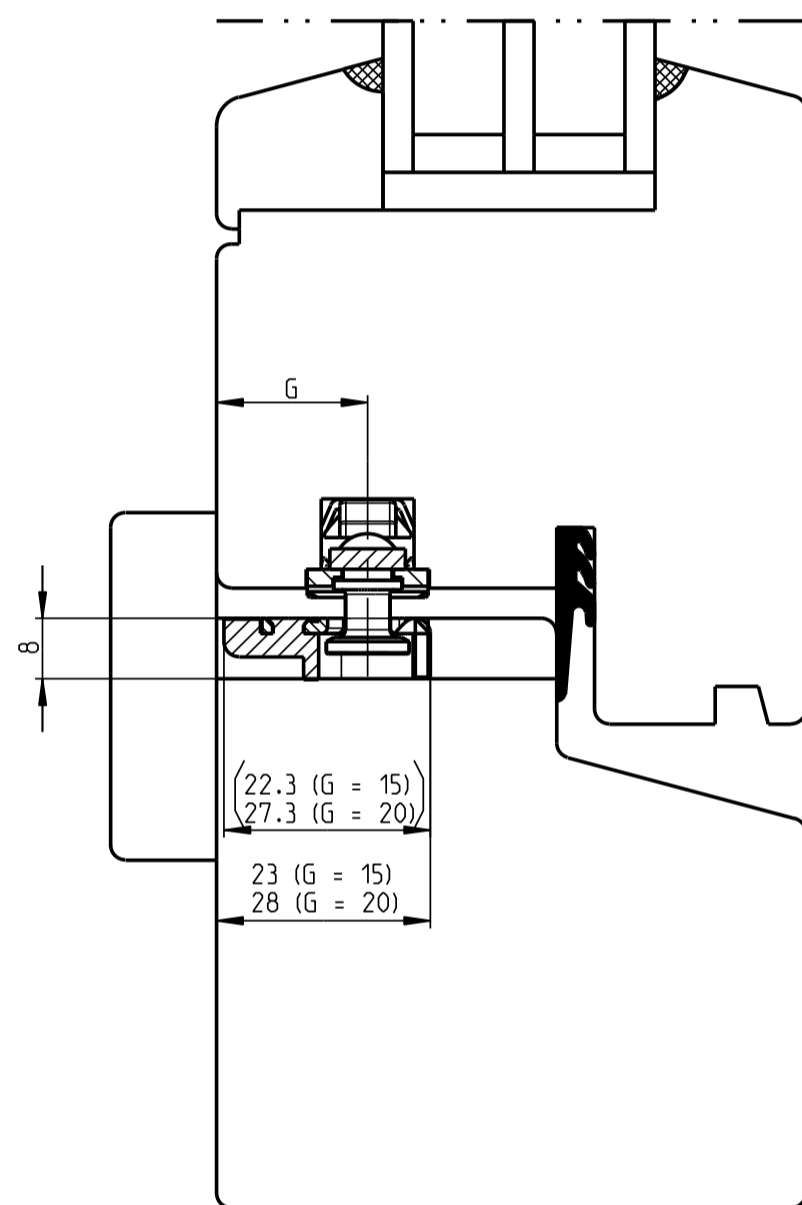
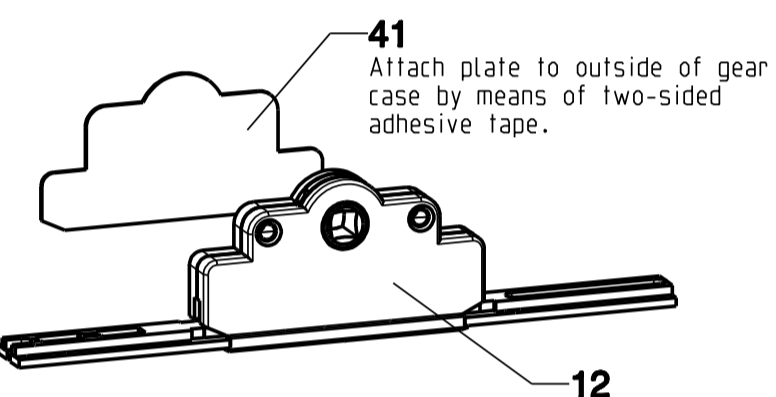


Milling jig for locking plate Se

Suited for cutting from the front with frame jamb placed horizontally, without cover strips. (Milling cutter Ø16, copying ring Ø27)



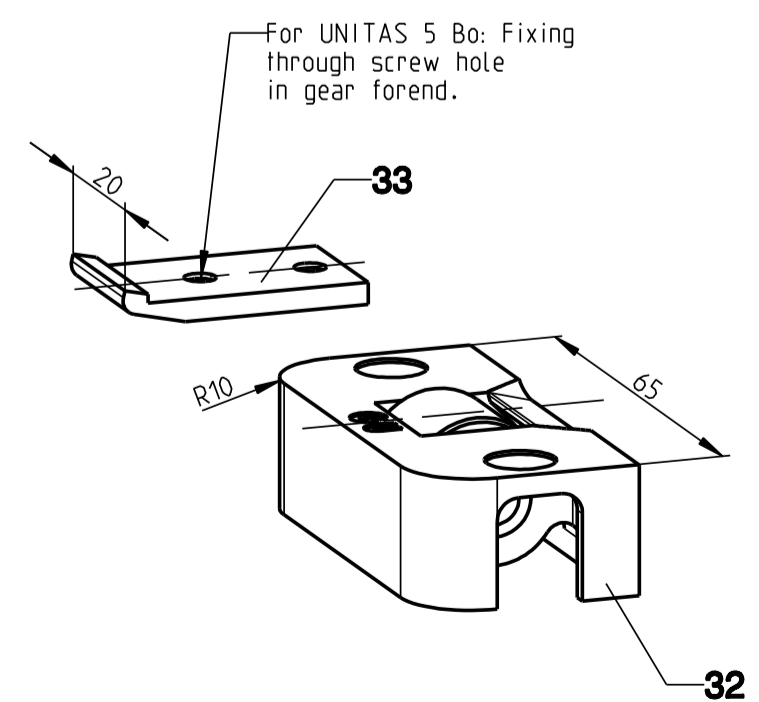
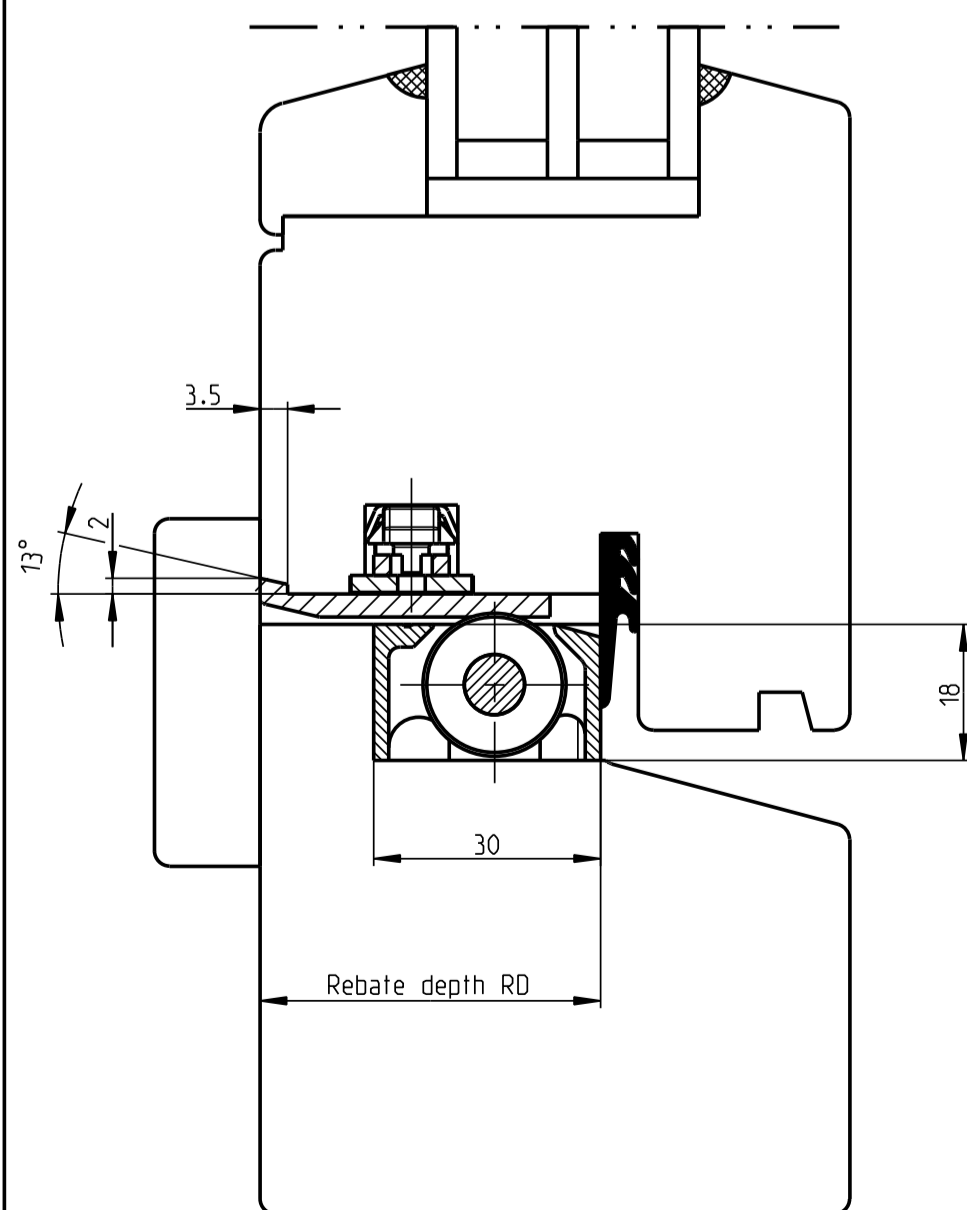
Mounting the anti-drill plate



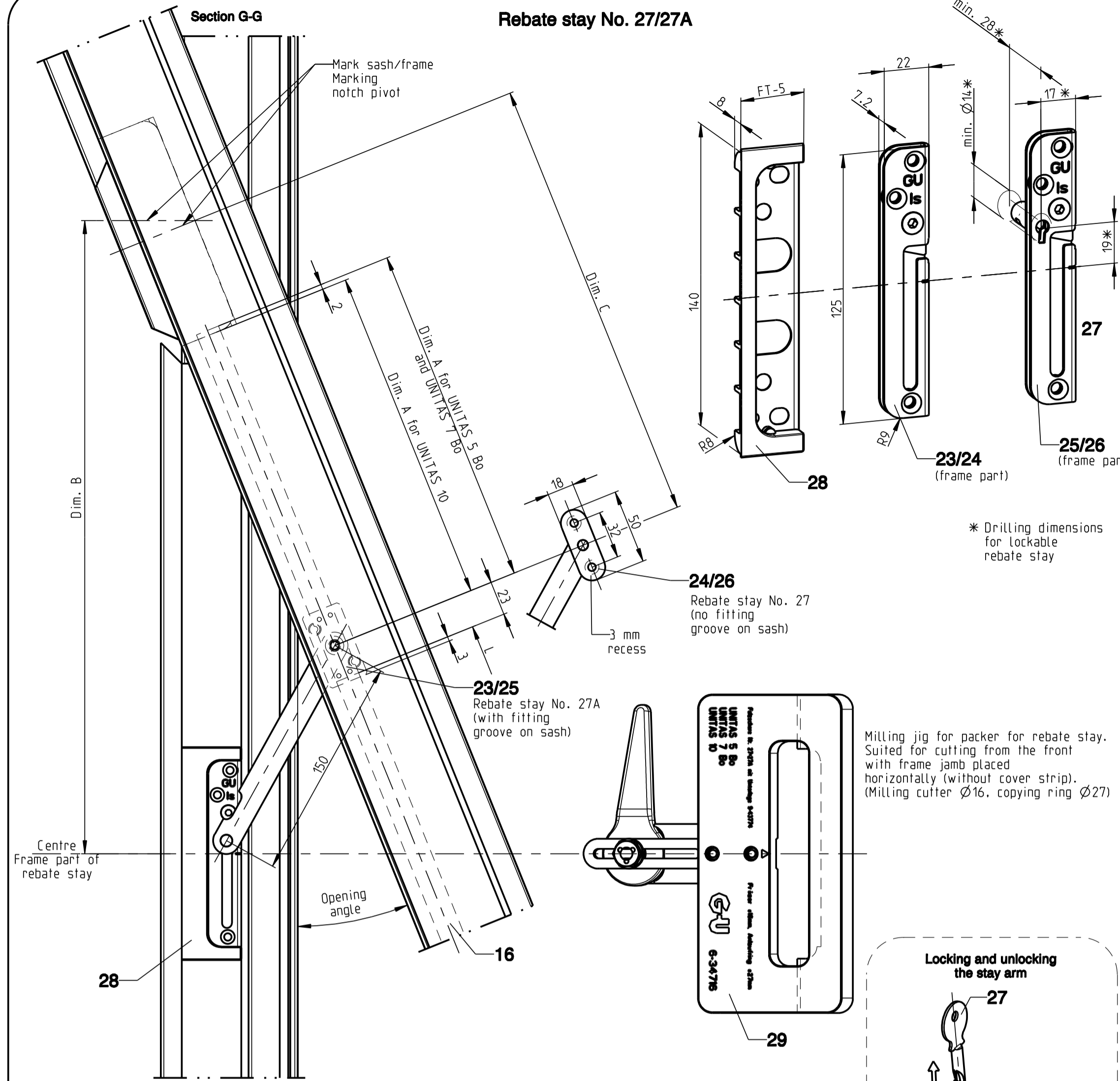
Shown without cover strip

Lifting roller

Section H-H



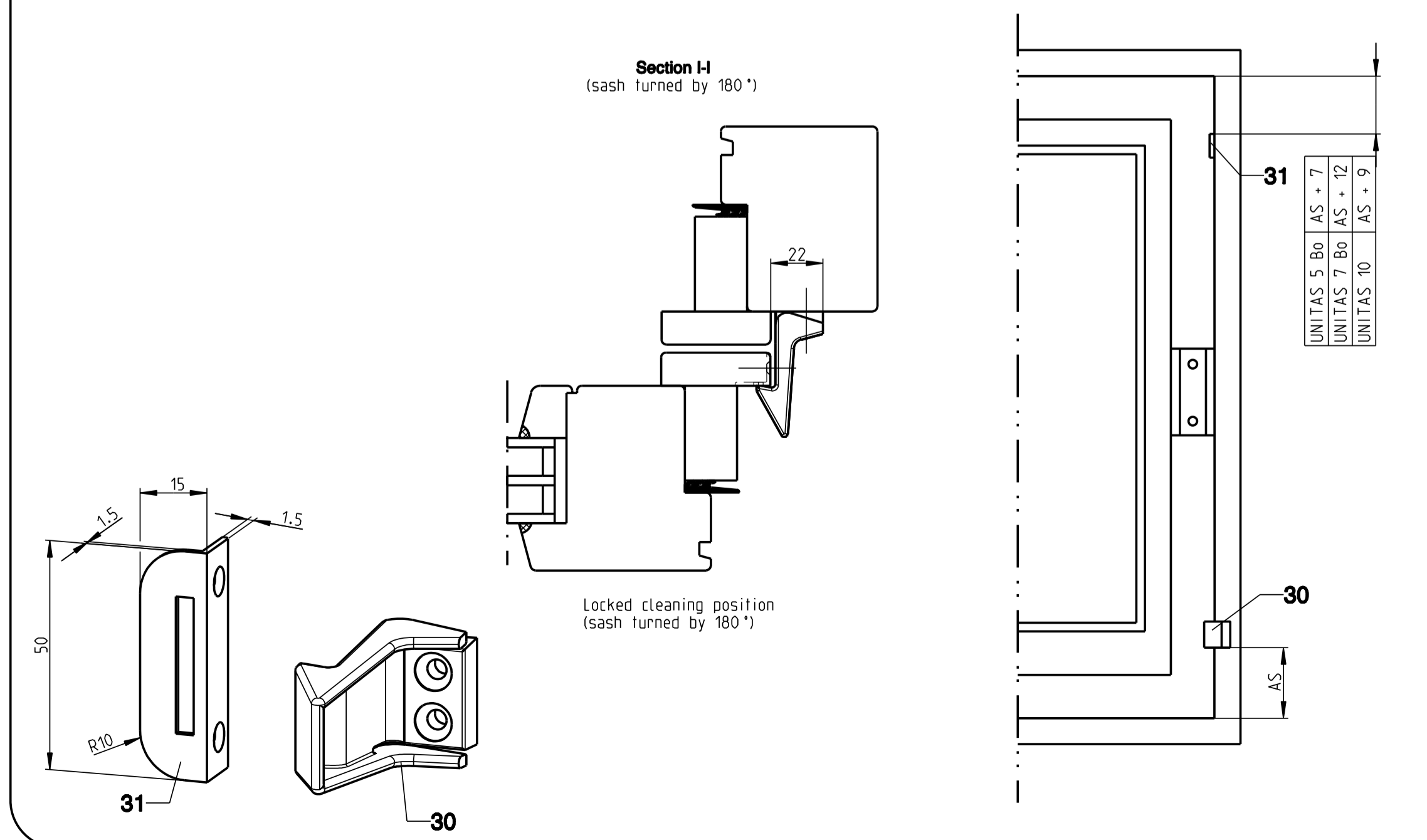
Rebate stay No. 27/27A



Opening angle	Horizontal pivot	Dim. A	Dim. B	Dim. C	SRH min.	L Length cover rail item 16
22°	UNITAS 5 Bo	415	306.5	1120	SRH/2 - 489.5	
	UNITAS 7 Bo	225	405	299.5	1140	SRH/2 - 498.5
	UNITAS 10	410	300	1150	SRH/2 - 502	
35°	UNITAS 5 Bo	115	305	196.5	900	SRH/2 - 379.5
	UNITAS 7 Bo	105	285	179.5	900	SRH/2 - 378.5
	UNITAS 10	110	295	185	920	SRH/2 - 387
40°	UNITAS 5 Bo	90	280	171.5	850	SRH/2 - 354.5
	UNITAS 7 Bo	85	265	159.5	860	SRH/2 - 358.5
	UNITAS 10	85	270	160	870	SRH/2 - 362

Locking detent 180°

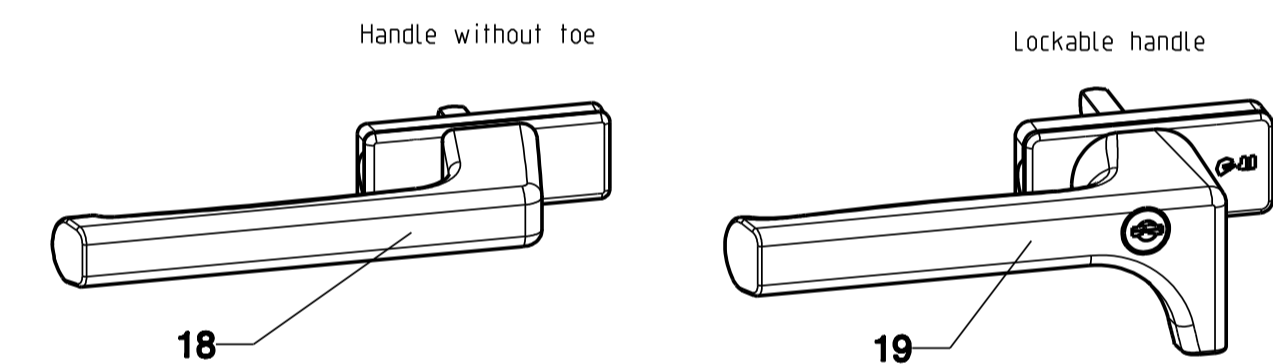
Section I-I (sash turned by 180°)



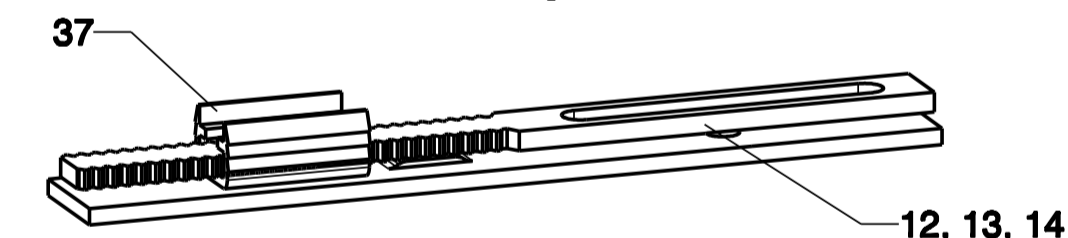
Optional parts

Item	Description	Article no.	Piece	
			Standard locking	All-round locking [1]
18	Handle DIRIGENT-S 44 N00 UNITAS 5 Bo	6-29189-20-0		alternatively to item 2
	UNITAS 7 Bo, UNITAS 10	6-29189-30-0		
19	Handle DIRIGENT-F/Z Lockable N10 (10 mm Plugs)	K-16810-00-0		alternatively to item 2
20	Open-end wrench 22" Lock UNITAS 10	9-23562-00-0	1	
21	Profile gasket P 828	W-751015		Linear metres
22	Gasket roller (not shown in drawing)	9-23749-00-0	1	
23	Rebate stay No. 27A	5-21306-00-L	1	1
		5-21306-00-R	-	1
24	Rebate stay No. 27	5-20143-00-R	1	-
25	Rebate stay No. 27A lockable (without key)	5-21689-00-L		alternatively to item 23
		5-21689-00-R		
26	Rebate stay No. 27A lockable (without key)	5-20152-00-R		alternatively to item 24
27	Key for lockable rebate stay	9-23074-00-0	1	
28	Packer for rebate stay	UNITAS 5 Bo (RD = 35)	2	2
		UNITAS 7 Bo (RD = 40)		
		UNITAS 10 (RD = 45)		
29	Milling jig for packer for rebate stay	6-34774-35-0	1	
30	Locking detent 180° for cleaning position	9-43774-40-0		
31	Edge protector for locking detent 180°	6-21822-00-0	1	
32	Lifting roller	UNITAS 5 Bo (G = 15)		alternatively 1 or 2
		UNITAS 7 Bo (G = 20)		
33	Ramp for lifting roller	UNITAS 10 (G = 20)		
34	Drilling jig for horizontal pivot with clamping device	UNITAS 5 Bo	9-28600-00-0	1
		UNITAS 7 Bo	9-26884-00-0	
		UNITAS 10	9-28802-00-0	
35	Drilling jig for horizontal pivot without clamping device	UNITAS 5 Bo	9-26012-00-0	1
		UNITAS 7 Bo	9-26012-00-0	
36	Rod (L=2350) for milling jigs for locking plates	9-41859-00-0	1	
	with clamping device	6-32784-02-0		
	without clamping device	6-32784-01-0		
37	Milling jig for locking plates	576-950	2	
		951-1450	3	
		1451-1950	4	
		1951-2950	5	
38	Rod guide	8-00805-00-0	4 - 8	-
39	Locking plates Se	UNITAS 5 Bo (G = 15)		alternatively to item 9
		UNITAS 7 Bo, UNITAS 10 (G = 20)		
40	Locking plates Se top	6-27522-00-0		alternatively to item 10
41	Milling jig for locking plates Se	6-27774-00-0	1	
42	Anti-drill plate	9-43052-00-0	1	

Handle



Rod guide



Applied with standard locking system. Provides better guidance of driving rod in case of long toothed sections. Guides is slide to centre of toothed section.

Description
Horizontal pivot UNITAS 5 Bo, UNITAS 7 Bo and UNITAS 10 Bo.

Release No.	Level	released	Scale	Modification	Size
624345	Ver.	--	Mz	%	3
624345	Draft	15.06.2010	Mn		1
Replacement for --					Sheet
					5/5