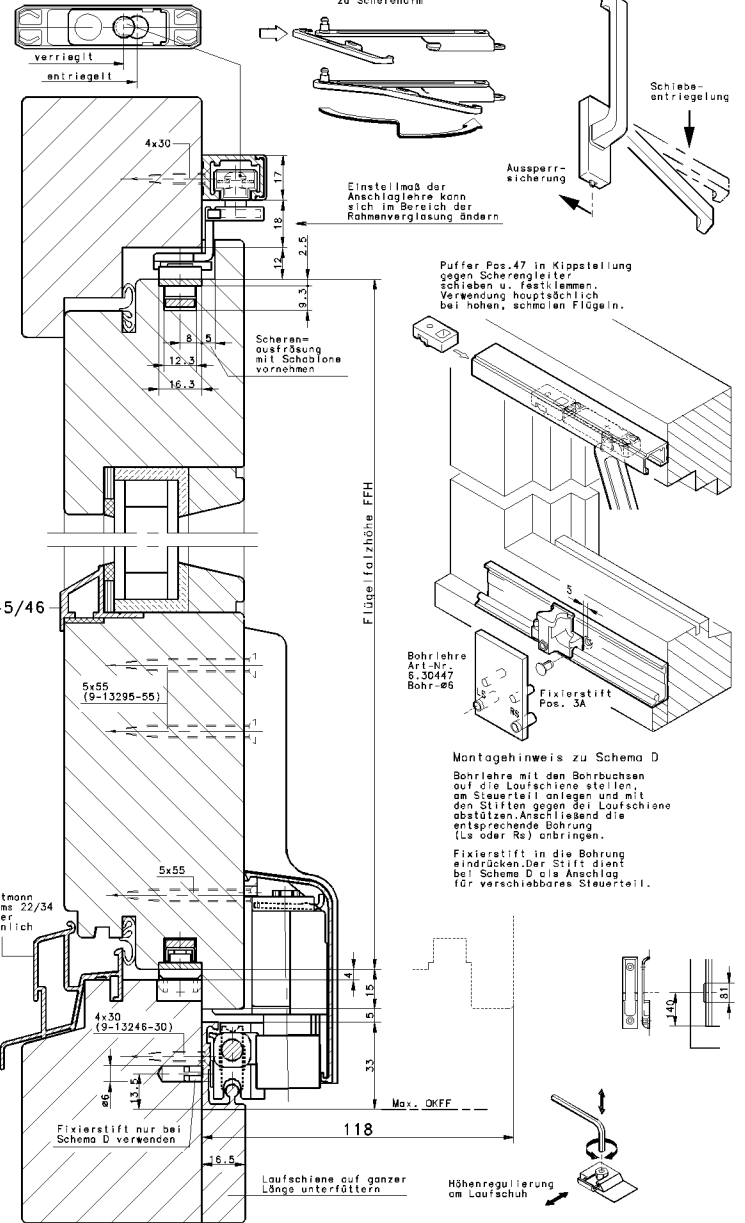
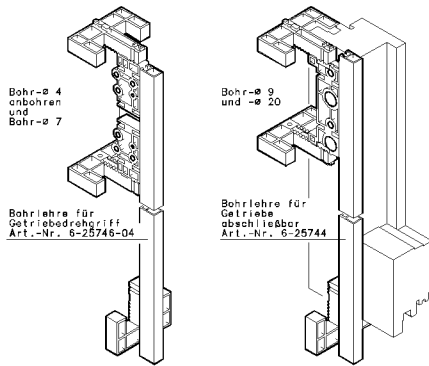
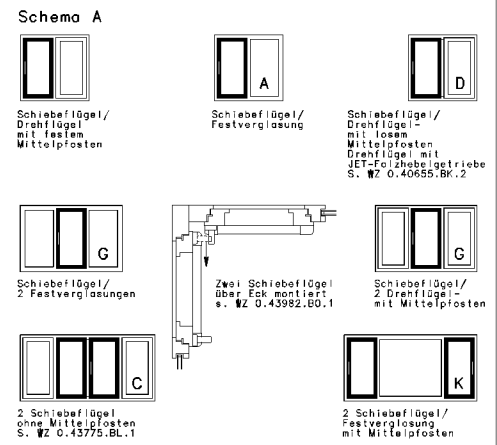
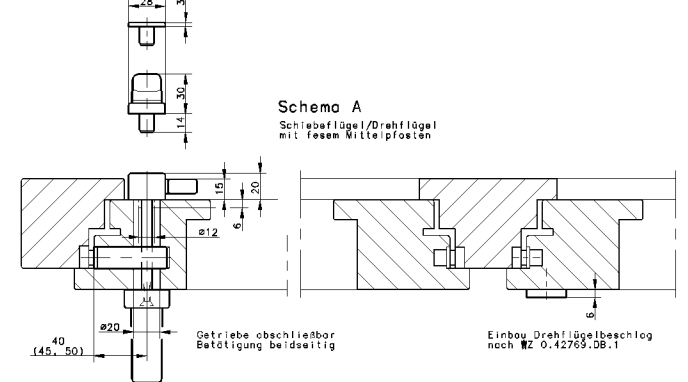
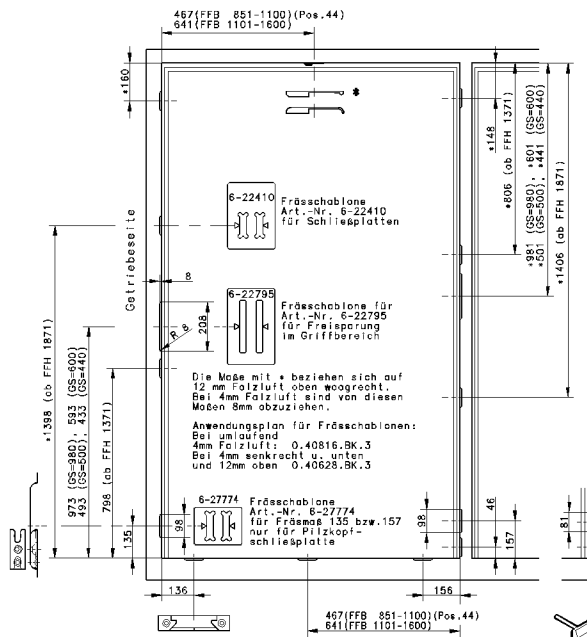
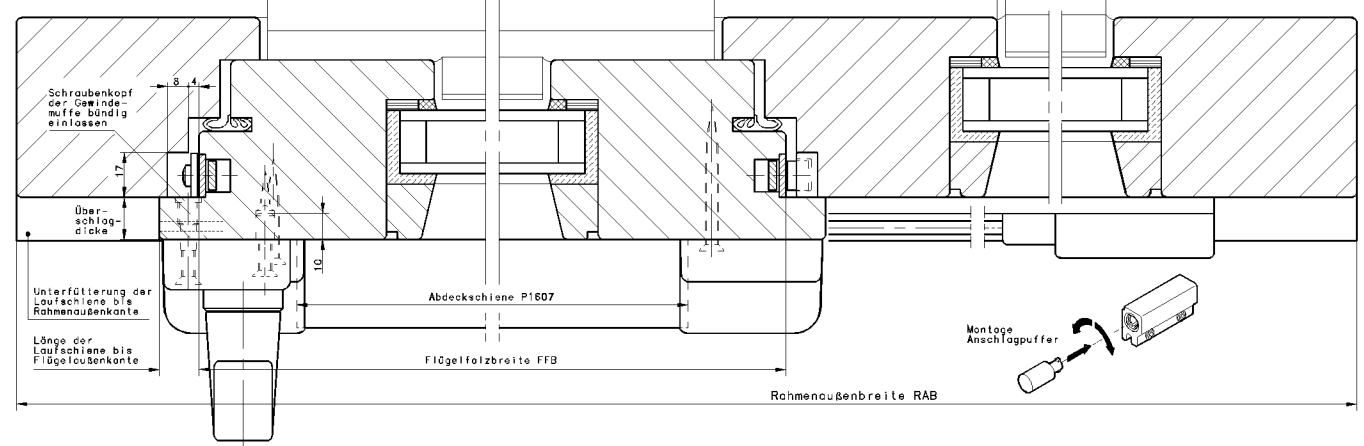


Verriegelung des Scherenbolzens durch Anbohrschlüssel SW 4 (siehe Montageanleitung Pkt. 14)

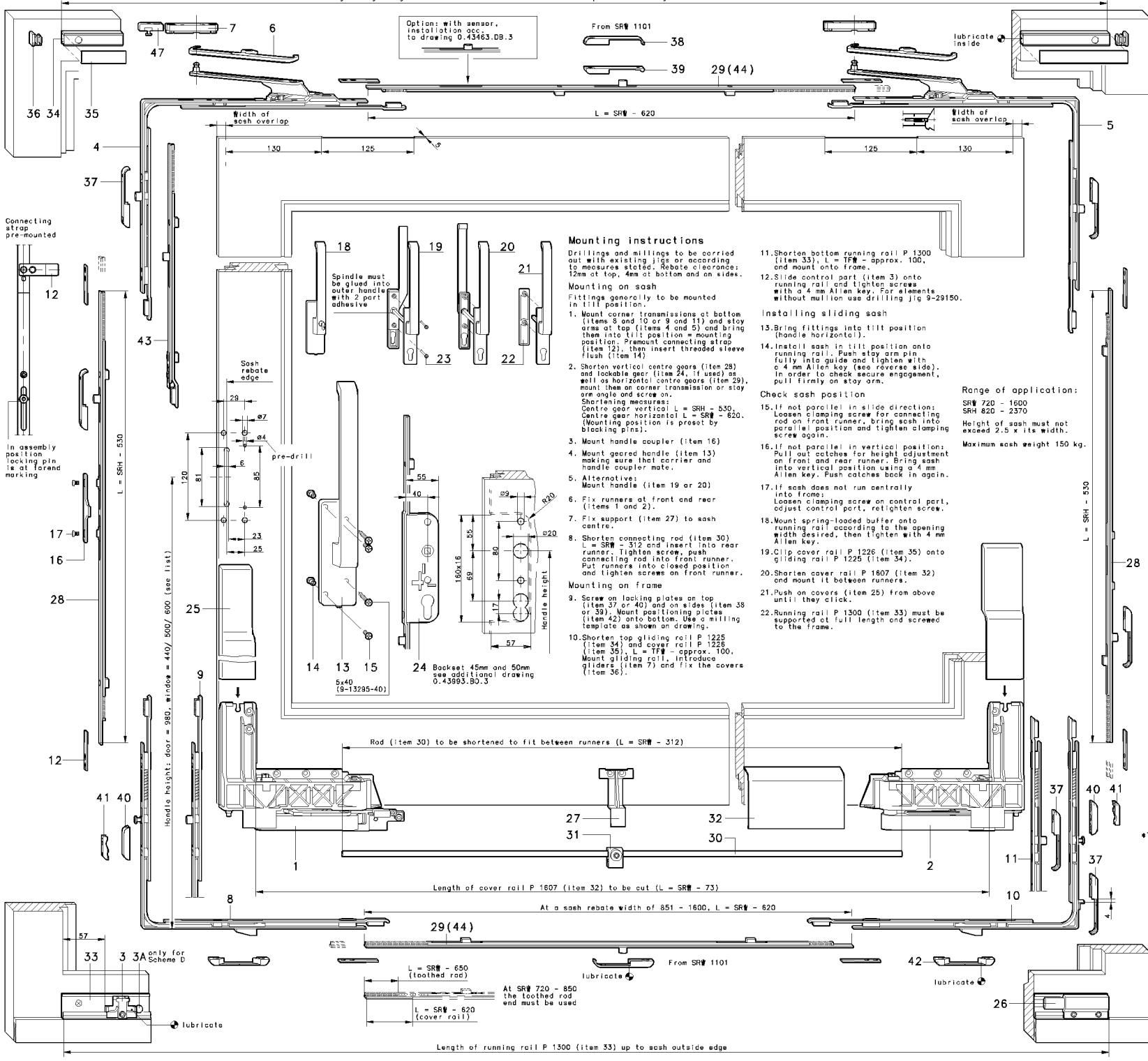


Schema A
Schiebeflügel/Festverglasung



BENENNUNG		Parallelschiebe-Kippbeschlag					GU	
		GU-966/150 mZ Holz					GU	
		4mm Falzlufthöhe					GU	
71252 DITZINGEN		ERSATZ FÜR		GAD		BL1		
				043870		BL1		

Length of gliding rail P 1225 and cover rail P 1226 both up to outside edge of sash



Mounting instructions

Drillings and millings to be carried out with existing jig or according to measure stated. Rebate clearance: 12mm at top, 4mm at bottom and on sides.

Mounting on sash
Fittings generally to be mounted in tilt position.

- Mount corner transmissions at bottom (items 8 and 10 or 9 and 11) and stay arms at top (items 4 and 5) and bring them into tilt position = mounting position. Pre-mount connecting strap (item 12), then insert threaded sleeve flush (item 14).
- Shorten vertical centre gears (item 28) and lockable gear (item 24, if used) as well as horizontal centre gears (item 29), mount them on corner transmission or stay arm angle and screw on.
- Shortening measures:
Centre gear vertical L = SRH - 530.
Centre gear horizontal L = SRW - 620.
(Mounting position is preset by blocking pins).
- Mount handle coupler (item 16)
- Mount geared handle (item 13) making sure that carrier and handle coupler mate.
- Alternative:
Mount handle (item 19 or 20)
- Fix support (item 27) to sash centre.
- Shorten connecting rod (item 30) L = SRW - 312 and insert into rear runner. Tighten screw, push connecting rod into front runner. Put runners into closed position and tighten screws on front runner.
- Shorten top gliding rail P 1225 (item 34) and insert into rear runner. Tighten screw, push connecting rod into front runner. Put runners into closed position and tighten screws on front runner.
- Shorten top gliding rail P 1225 (item 34) and cover rail P 1226 (item 35), L = TFW - approx. 100. Mount gliding rail, introduce gliders (item 7) and fix the covers (item 36).

- Shorten bottom running rail P 1300 (item 33), L = TFW - approx. 100, and mount onto frame.
- Slide control part (item 3) onto running rail and tighten screws with 4 mm Allen key. For elements without mullion use drilling jig 9-29150.

Installing sliding sash

- Bring fittings into tilt position (handle horizontal).
- Install sash in tilt position onto running rail. Push stay arm pin fully into guide and tighten with a 4 mm Allen key (see reverse side). In order to check screw engagement, pull firmly on stay arm.

Check sash position

- If not parallel in slide direction: Loosen clamping screw for connecting rod on front runner, bring sash into parallel position and tighten clamping screw again.
- If not parallel in vertical position: Pull out catches for height adjustment on front and rear runner. Bring sash into vertical position using a 4 mm Allen key. Push catches back in again.
- If sash does not run centrally into frame: Loosen clamping screw on control part, adjust control part, retighten screw.
- Mount spring-loaded buffer onto running rail according to the opening width desired, then tighten with 4 mm Allen key.
- Clip cover rail P 1226 (item 35) onto gliding rail P 1225 (item 34).
- Shorten cover rail P 1607 (item 32) and mount it between runners.
- Push on covers (item 25) from above until they click.
- Running rail P 1300 (item 33) must be supported at full length and screwed to the frame.

Range of application:
SRW 720 - 1600
SRH 820 - 2370

Height of sash must not exceed 2.5 x its width.

Maximum sash weight 150 kg.

Item	Description	Order no.	Qty. acc. to scheme
1	Runner	6-29558	1 2
2	Runner	6-29559	1 2
3	Control part	6-29563	1 2
3A	Blocking pin	9-39997	- 1 - -
4	Stay arm	6-29613	1 2
5	Stay arm	6-29624	1 2
6	Stay arm cover	9-35573	2 4
7	Stay arm glider	6-23755	2 4
8	Corner transmission with mushroom locking pin	6-29228	1 2
9	Front	6-23794	1 2
10	Corner transmission with mushroom locking pin	6-29229	1 2
11	Rear	6-23867	1 2
12	Connecting strap	9-29973	8 16
13	Geared handle DIRIGENT	6-24542	1 2
14	Threaded sleeve	9-30705	2 4
15	Countersunk screw M5x20 DIN 965	9-13153-20	2 4
16	Handle coupler	9-30111	1 2
17	Domed headed screw M5x6 DIN 7985	9-31015	1 2
18	Lockable	6-26058	1 2
19	Handle DIRIGENT both sides outside 15 mm with cylinder bore	6-25164	1 2
20	Handle DIRIGENT both sides outside 30 mm with cylinder bore	6-24072	1 2
21	Handle DIRIGENT inside with cylinder bore	6-24622	1 2
22	Rosetta outside (for fixed handle inside)	9-30489	1 2
23	Countersunk screw M6	9-13274	2 4
24	Lockable gear boxset 40 (lengths as item 28)	6-23827	1 2

Alternatives:

Item	Description	Order no.	Qty. acc. to scheme
18	Lockable	6-26058	1 2
19	Handle DIRIGENT both sides outside 15 mm with cylinder bore	6-25164	1 2
20	Handle DIRIGENT both sides outside 30 mm with cylinder bore	6-24072	1 2
21	Handle DIRIGENT inside with cylinder bore	6-24622	1 2
22	Rosetta outside (for fixed handle inside)	9-30489	1 2
23	Countersunk screw M6	9-13274	2 4
24	Lockable gear boxset 40 (lengths as item 28)	6-23827	1 2

(When using the lockable gear, only 1 vertical centre gear item 28 is needed)

Item	Description	Order no.	Qty. acc. to scheme
25	Cover	9-38542	1 2
26	Spring-loaded buffer	6-29565	1 2
27	Support	9-38522	1 2

Item	Description	SRW		Order no.	Qty. acc. to scheme
		Length	ML		
28	Centre gear vertical	820-960	451	6-23866-01	2 4
		961-1120	590	6-23866-02	
		1121-1370	840	6-23866-03	
		1371-1620	1090	6-23866-04	
		1621-1870	1340	6-23866-05	
		1871-2120	1590	6-23866-06	
		2121-2370	1840	6-23866-07	
29	Centre gear horizontal	SRW	Length ML		2 4
		720-1100	480	6-23850-01	
		1101-1350	730	6-23850-02	
30	Rod ø8	SRW	Length		1 2
		720-850	600	9-25476-06	
		851-1100	850	9-25476-09	
31	Support	SRW	Length		1 2
		1101-1350	1100	9-25476-11	
		1351-1600	1360	9-25476-14	
32	Cover rail bottom P 1607	SRW	Length		1 2
		720-1100	1035	9-38803-11	
33	Running rail P 1300	SRW	Length		1
		820-1370	1960	9-31483-20	
		851-1100	2460	9-31483-25	
		1101-1350	2960	9-31483-30	
34	Gliding rail P 1225	SRW	Length		1
		720-850	600	9-31483-35	
		851-1100	850	9-31483-35	
		1101-1350	1100	9-31483-35	
35	Cover rail P 1226	SRW	Length		1
		720-850	600	9-30141	
		851-1100	850	9-30142	
36	Cover for gliding rail	SRW	Length		2
		820-1370	1720	9-31031	
		1371-1870	2220	9-31031	
		1871-2370	2720	9-31031	
37	Locking plate *	SRW	Length		3 6
		820-1370	1720	9-31031	
		1371-1870	2220	9-31031	
		1871-2370	2720	9-31031	
38	Locking plate top	SRW	Length		1 2
		820-1370	1720	9-31016	
		1371-1870	2220	9-31016	
		1871-2370	2720	9-31016	
39	Locking plate horizontal	SRW	Length		2 4
		820-1370	1720	9-39183-17	
		1371-1870	2220	9-39184	
		1871-2370	2720	9-39184	
40	Mushroom pin locking plate *	SRW	Length		2 4
		820-1370	1720	9-30432	
41	Packer for mushroom pin locking plate *	SRW	Length		2 4
		820-1370	1720	9-30432	
42	Positioning plate	SRW	Length		2 4
		820-1370	1720	9-30432	

*The quantities given apply when corner transmissions (item 8 and 10) are used

Optional parts

Item	Description	Order no.	Qty. acc. to scheme
43	Gear extension L = 250mm L = 500mm (1 locking pin)	6-24737 6-24959	1 2
44	Centre gear horizontal	6-23516-01	2 4
45	Clazing bead P 413	9-09256	2 3
46	End cap 413/I (1 pair)	9-20114	2 3
47	FST buffer P 1225	6-30388	1 2

Order specifications:
TFW (total frame width)
SRW (sash rebate width)
SRH (sash rebate height)
Assembly lh or rh (illustrated lh)

Colours: EV1, UC3, UC5 or white
Scheme
Lockable gear with handle inside or on both sides

Description: Parallel Slide and Tilt fittings GU-966/150 mZ for timber
Rebate clearance 4 mm

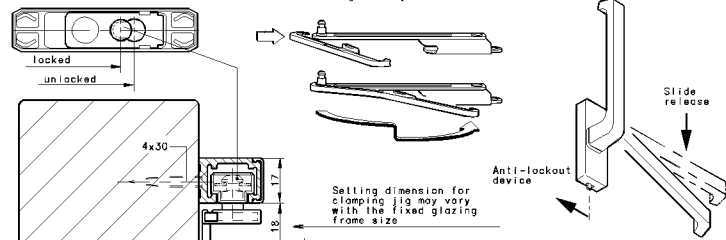
GAU GEFÄHRDUNGSSCHUTZ SYSTEME
COPY RIGHTS RESERVED

DATE: 2014-07-08
REVISION: B 4
DRAWN: B
CHECKED: B
DESIGN: B
SCALE: 1:1

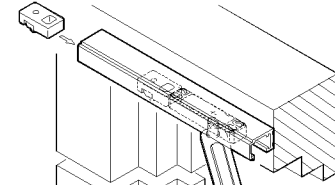
BL1

71252 DITZINGEN

Locking of stay arm pin into glider with a 4 mm Allen key, refer to mounting instructions pt. 14

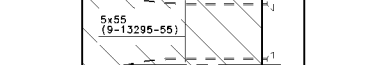


Buffer, item 47, to be pushed towards stay arm glider in tilt position and clamped. Particularly used for high and narrow sashes.



Use milling jig to mill stay arm slot

45/46

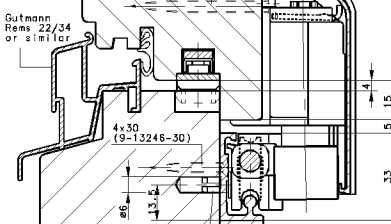


Drilling jig 6-30447, drilling die 6 mm

Blocking pin, item 3A

Assembly instruction for scheme D

Put drilling jig with drilling bushes on running rail, align with control part and support with pins against running rail. Then drill the corresponding hole (lh or rn). Press blocking pin into bore. Pin serves for scheme D as stop of movable control part.



Blocking pin only to be used for scheme D

Running rail to be supported at total length

Height adjustment on runner

Drilling jig for runner 9-30424-04

Pre-drill with 04

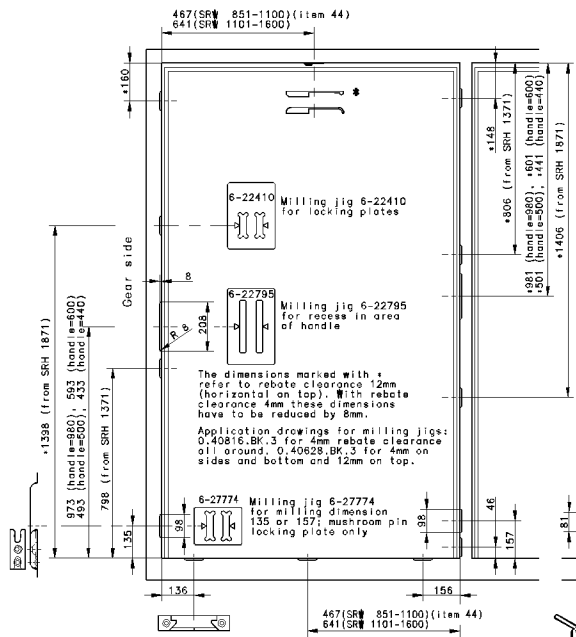
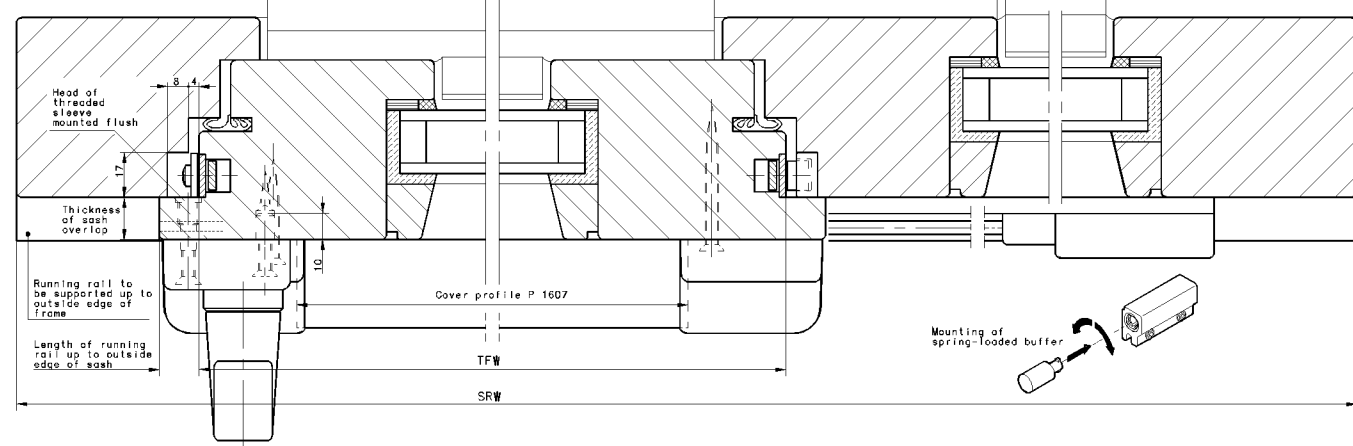
For support of P 1607

Clamping jig 6-23246 for gliding rail 1225 Handle colour blue

Drilling jig 6-23616 as drill guide, suitable for gliding and running rail Drill 6.5

Scheme A

Sliding sash/ fixglazed sash



The dimensions marked with * refer to rebate clearance 12mm (horizontal on top). With rebate clearance few these dimensions have to be reduced by 8mm. Application drawings for milling jigs: 0.40816, BK 3 for 4mm rebate clearance all around; 0.40828, BK 3 for 4mm on sides and bottom and 12mm on top.

6-22774 Milling jig 6-22774 for milling dimension 135 or 157; mushroom pin locking plate only

6-22798 Milling jig 6-22798 for recess in area of handle

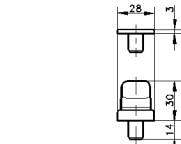
6-22410 Milling jig 6-22410 for locking plates

Pre-drill with 04 and 07

Drilling 09 and 07

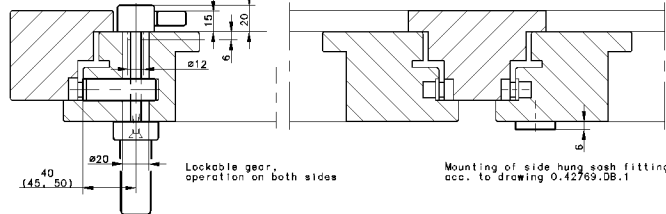
Drilling jig for geared handle 6-25748-04

Drilling jig for lockable gear 6-25744



Scheme A

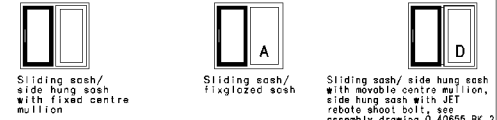
Sliding sash/ side hung sash with fixed centre mullion



Lockable gear, operation on both sides

Mounting of side hung sash fittings acc. to drawing 0.42769.DB.1

Scheme A



Sliding sash/ side hung sash with movable centre mullion

Sliding sash/ side hung sash with fixed centre mullion

Sliding sash/ side hung sash with fixed centre mullion with rebate shoot bolt, see assembly drawing 0.40655.BK.2

Sliding sash/ 2 fixglazed sashes

2 sliding sashes in corner position acc. to drawing 0.43982.DB.1

Sliding sash/ 2 side hung sashes with centre mullion

2 sliding sashes w/o centre mullion acc. to drawing 0.43775.BL.1

2 sliding sashes/ fixglazed sash

Table with Description: Parallel Slide and Tilt fittings GU-966/150 mZ for timber Rebate clearance 4 mm. Includes a grid for part numbers and a barcode area.

Table with Description: Parallel Slide and Tilt fittings GU-966/150 mZ for timber Rebate clearance 4 mm. Includes a grid for part numbers and a barcode area.