

Instruments

Impressions

Burs

Cements

Restorative materials

Polishers

NEW CATALOGUE

Prosthetics

Posts

Orthodontics

Prevention and Prophylaxis

Disinfection

X-Ray

Needles, Biomaterials and Sutures

Laboratory

Endodontics

(Disposables)

Quality backed by years of experience

With more than 30 years of experience in the dental care sector, we can now offer you a complete range of top-quality products developed to meet the requirements of the most meticulous dental professionals.

JULIÁN RANEDA DE LA HOZ

Business Development Director



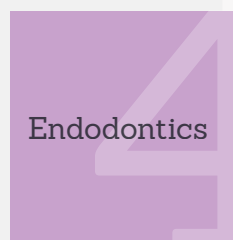
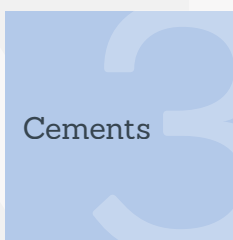
- Amalgam carriers
Page 17
- Amalgams
Page 17
- Etching gel
Page 16
- Interdental wedges
Page 16
- Matrices
Page 16
- Metal dappen
dishes
Page 17
- Micro-applicators
Page 15
- Proclinic Expert
Bulk Fill Composite
Pages 10 and 11
- Proclinic Expert
LED curing light
Page 14

- Alginate and
plaster mixing
bowls
Page 18
- Alginate flavours
Page 18
- Alginates
Page 18
- Alginate spatula
Page 18
- Dispensing gun
Page 23
- Intra-oral tips
Page 23

- Double-ended
cement spatula
Page 29
- Intra-oral tips,
type 1
Page 27
- Intra-oral tips,
type 4
Page 27
- Mixing tips,
type 11
Page 29
- Proclinic Expert
core build up
Page 27
- Proclinic Expert
dual resin cement
Page 26
- Proclinic Expert
glass ionomer
cement
Page 27
- Proclinic
Expert MTA
Page 25

- Endodontic
accessories
Page 33
- Gates Glidden
drills
Page 33
- Gutta-percha
points
Page 31
- H-files
Page 30
- K-Files
Page 30
- Lentulo spirals
Page 31
- NiTi files
Page 30
- Paper points
Page 30
- Peeso reamers
Page 33
- Reamers
Page 31

- Diamond burs for
turbine
Page 35
- Endo-z burs
Page 35
- Metal and crown
cutting burs for
turbine
Page 35



- Proclinic Expert
Micro Hybrid
Composite
Page 13
- Proclinic Expert
Nano Flow
Composite
Page 12
- Proclinic Expert
Nano Hybrid
Composite
Pages 8 and 9
- Proclinic Expert
radiometer
Page 14
- Proclinic Expert
self-etch adhesive
Page 15
- Proclinic Expert
total etch adhesive
Page 15
- PVC mixing pads
Page 15

- Metal trays
Page 23
- Mixing tips
Page 23
- Plasters
Page 19
- Proclinic Expert
A-silicones
Page 21
- Proclinic Expert
bite registration
silicone
Page 19
- Retraction cord
instrument
Page 23
- Retraction cord
Page 23
- Wax bars
Page 19
- Wax knife
Page 19
- Wax sheets
Page 19

- Proclinic Expert
pure calcium
hydroxide paste
Page 28
- Proclinic Expert
resin modified glass
ionomer cement
Page 27
- Proclinic Expert
root canal sealer
Page 24
- Proclinic Expert
temporary cement
Page 28
- Temporary cement
Page 29
- Temporary filling
material
Page 29
- Temporary
restorative material
Page 29
- Zinc phosphate
cement
Page 29

- Root canal
preparation
cream
Page 32
- Rubber dam,
medium gauge,
green
Page 32
- Rubber dam
forceps
Page 32
- Rubber dam
frames
Page 32
- Rubber dam punch
Page 32
- Spreaders/Pluggers
Page 31

- Tungsten
carbide burs for
contra-angle
Page 35
- Tungsten carbide
burs for turbine
Page 35

- Haemostatic sponges
Page 37
- PGA sutures
Page 37

- 1-ring aspirating syringe
Page 38
- 3-ring aspirating syringe
Page 38

- Carbon fibre posts
Page 39
- Fibreglass posts
Page 39
- Post drills
Page 39

- Pit and fissure sealant
Page 40
- Prophy brushes
Page 40
- Prophy cups
Page 40

- Arkansas stone points
Page 41
- Interproximal stripping strips
Page 41

Sutures and biomaterials

Syringes and needles

Posts

Prophylaxis

Polishers

- Silk sutures
Page 36
- Supramid® sutures
Page 36

- Hypodermic needles
Page 38
- Self-aspirating syringe
Page 38

- Sterile, white fibreglass posts
Page 39
- Sterile, white fibreglass R+ posts
Page 39
- Translucent fibreglass posts
Page 39

- Prophylaxis paste
Page 40

- Polishers
Page 41
- Polishing brushes, golden
Page 41
- Polishing strips
Page 41
- Stainless steel separating strips
Page 41

- Articulating paper, thin
Page 42
- Articulating paper forceps
Page 42
- Articulating paper
Page 42



Prosthetics

- Crown and bridge resin
Page 42
- Reinforcement ribbon
Page 42

- Phosphor plate barrier envelopes
Page 43
- X-ray film clips
Page 43



X-Ray

- X-ray film hanger with clips
Page 43
- X-ray film mounts
Page 43

- Antiseptic gel
Page 45
- Aspiration system disinfectant and detergent
Page 45
- Disinfectant wipes
Page 44
- Enzymatic instrument disinfectant and detergent
Page 44
- File and bur disinfectant and detergent
Page 44
- Instrument disinfectant and detergent
Page 44



Disinfection

- Mild soap
Page 45
- Sterilisation pouches
Page 45
- Sterilisation rolls
Page 45
- Surface disinfectant and detergent
Page 44
- Surface disinfectant
Page 44

- Barrier film and hose sleeves
Page 47
- Cotton cellulose rolls
Page 47
- Cotton dispensers/waste containers
Page 47
- Dispensers
Page 47
- Disposable dappen dishes
Page 47



Disposables

- Face masks
Page 46
- Gloves
Page 46
- Paper bib holder
Page 46
- Protective visors
Page 46
- Saliva ejectors
Page 47

- Adjustable face mask
Page 53
- Archwire hook
Page 51
- Brackets
Page 50
- Buccal tubes
Page 51
- Chains
Page 53
- Cheek retractor
Page 52
- Chin cup
Page 53
- Crimpable stops
Page 51
- Elastic bands
Page 53
- Elastic thread
Page 51
- Elastic tubing
Page 51
- Elastomeric modules
Page 53
- Extrusion hook
Page 51
- Goshgarian palatal bars
Page 53
- Instruments
Page 52



Orthodontics

- Intra-oral elastic bands
Page 53
- Ligature ties
Page 53
- Lingual buttons
Page 51
- Lip retractor
Page 52
- Neet separators
Page 51
- NiTi spring
Page 53
- Orthodontic silicone
Page 53
- Orthodontic wax
Page 53
- Proclinic Expert archwires
Pages 48 and 49
- Proclinic Expert straight lengths
Pages 48 and 49
- Quad Helix
Page 53
- Rotation wedges
Page 53
- Spacers
Page 53
- SPIN self-ligating button
Page 51
- T-hooks for vertical-slot brackets
Page 51

- Aluminium oxide
Page 57
- Articulating wax
Page 57
- Bi-pins
Page 56
- Die spacer
Page 56
- Dowel pins
Page 56
- Finishing and
sanitising spray
Page 57
- Glass beads
Page 57
- Light-cured base
plates
Page 57
- Magnet system
Page 56
- Metal cutting discs
Pages 58 and 59



- Occlusion spray
Page 57
- Plasters
Page 56
- Proclonic Expert
A-silicone
Page 54
- Proclonic Expert
C-silicone
Page 55
- Proscan anti-glare
scan spray
Page 56
- Silicone polishers
for acrylic
Pages 58 and 59
- Superflex HP discs
Pages 58 and 59
- Tungsten carbide
cutters
Pages 58 and 59

We are proud to release the new

PROCLINIC catalogue.

A revitalised range with all the latest
products and items to give you the
best solutions for everyday use.

And as always,

the best quality is guaranteed.

Discover our new range!

Restorative ma

PROCLINIC EXPERT NANO HYBRID

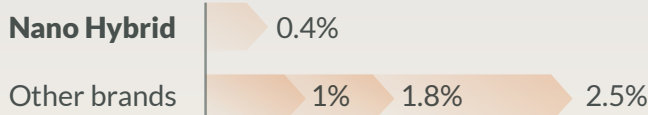
Your ideal anterior/posterior
composite



Thanks to this composite's translucence, it can be used to produce lifelike restorations without layering. Bis-GMA free. Its low shrinkage (2.05%) and high filler load by volume (61%) give long-lasting restorations.

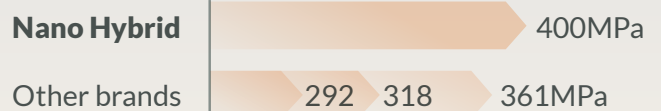
SHADE STABILITY

Change of colour of A2 shade after ageing in transmission mode*



COMPRESSIVE STRENGTH

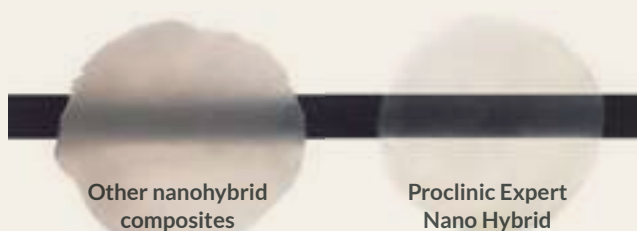
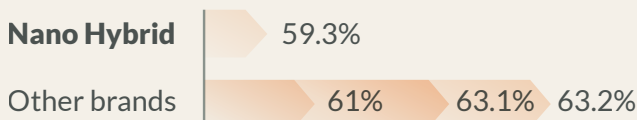
Strength*



* Results of tests conducted by the manufacturer compared to the three best-selling products on the Spanish market.

TRANSLUCENCY

Opacity*



Dr Alexander Johansson
ZahnCity GmbH,
Zurich, Switzerland.
www.zahncity.ch

"Proclinic Expert Nano Hybrid composite has ideal viscosity and is easily moulded and sculpted. It is very flexible, wear-resistant and has excellent physical strength."



terials

CLINICAL CASE STUDY**



- 1 The patient visited the surgery with fractures to teeth 11 and 21 that had occurred a long time before. The teeth needed to be repaired quickly and cheaply. Control X-rays and vitality tests were performed on tooth 21. A gingivectomy was recommended for this tooth to improve proportions and simulate the vertical fissure, but the patient was not interested.
- 2 After preparation, the tooth was etched for 20 seconds with Proclinc Etching Gel.
- 3 Results of etching with Proclinc Etching Gel.
- 4 A transparent acetate band was put into place and Proclinc Expert Total Etch Adhesive applied for 20 seconds to teeth 11 and 21. Proclinc Expert Nano Hybrid Composite Incisal was then applied to tooth 11.
- 5/6 A layer of Proclinc Expert Nano Hybrid Composite A3 was applied and covered with an incisal shade.
- 7 Initial polishing of restorations with the rubber dam still in place.
- 8 Final high-gloss polishing with rubber cups and finishing paste.
- 9 Final result.



Dr Lotte Hallander
TandCity ApS, Copenhagen,
Denmark.
www.tandcity.dk

"Proclinc Expert Nano Hybrid is very easy to use and apply, while the nano effect provides excellent shade matching. I truly recommend this product."



Proclinc Expert Nano Hybrid composite, syringe (4g)

Kit*	Ref. 36587	Shade B3	Ref. 36620
Shade A1	Ref. 36588	Shade C2	Ref. 36594
Shade A2	Ref. 36589	Shade C3	Ref. 36621
Shade A3	Ref. 36590	Shade D3	Ref. 36622
Shade A3.5	Ref. 36591	Bleach	Ref. 36595
Shade A4	Ref. 36592	Incisal	Ref. 36596
Shade B2	Ref. 36593	Universal opaque	Ref. 36597

*Kit contents: 5 x 4g syringes (A1, A2, A3, A3.5, B2), 1 x 5ml total etch adhesive, 2 x 2ml syringes of blue etching gel, 40 micro-applicators + Vita shade guide.



Proclinc Expert Nano Hybrid composite, compules (20 x 0.25g)

Shade A1	Ref. 36580	Shade B2	Ref. 36584
Shade A2	Ref. 36581	Shade C2	Ref. 36585
Shade A3	Ref. 36582	Incisal	Ref. 36586
Shade A3.5	Ref. 36583		

Restorative ma



PROCLINIC EXPERT BULK FILL

The fastest
restoration



Proclinic Expert Bulk Fill is a light-cured, radiopaque posterior composite capable of treating a maximum thickness of 5mm in 20 seconds.

CLINICAL CASE STUDY**



Dr Carlos Gargallo Gallego
Clínica Dental Carlos Gargallo
Dental council registration
No.: 3947.

“Proclinic Expert Bulk Fill has very satisfactory properties. It is surprisingly easy to handle and condense into the cavity. It can also be applied directly into the cavity as it has excellent polishing and shade-matching characteristics. We always recommend using Proclinic Expert Bulk Fill in conjunction with Proclinic Expert Nano Flow at the bottom of the cavity.”

- 1 Tooth 36 following endodontic preparation. After rinsing, apply Proclinic Expert Total Etch Adhesive to immediately seal the cavity.
- 2 Application of Proclinic Expert Nano Flow Composite A3.5 as a liner. Thanks to its perfect flowability, this material exhibits ideal behaviour and stays where it is applied.
- 3 Fill the cavity with the new Proclinic Expert Bulk Fill Composite in two 2–3mm increments and light cure each increment for 20 seconds. The material is easily condensed using conventional techniques.
- 4 Application of Nano Hybrid Composite Incisal in a single final layer to match enamel shading and ensure the restoration does not appear monochromatic.
- 5 Polishing and shaping of the tooth's occlusal anatomy with fine grit turbine burs.
- 6 Occlusal adjustment, polishing and finishing of the restoration in the mouth using contra-angle burs at low speeds.

terials

- 5mm increments can be light-cured in 20 seconds.
- Does not stick to instruments when they are removed.
- Good viscosity, condenses well in posterior restorations.
- Thanks to its firmness it can be condensed to create better contact points.

Proclinic Expert Bulk Fill Composite, syringe (4g)
 Universal Ref. 36618

Excellent ratings in clinical tests

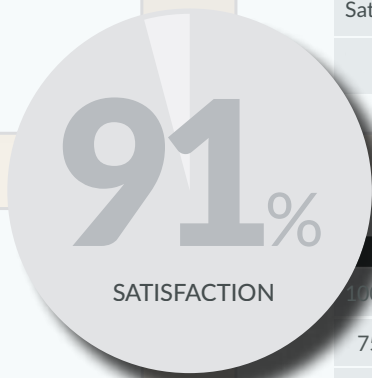


Proclinic Expert Bulk Fill
++++ 1/2

THE DENTAL ADVISOR
www.dentaladvisor.com

RATINGS:
 Excellent +++++
 Very Good ++++
 Good +++

345
 CLINICAL APPLICATIONS



78%
 of consultants consider
Proclinic Expert Bulk Fill
TO BE AS GOOD AS
OR BETTER
 than other brands



Restorative ma

PROCLINIC EXPERT NANO FLOW

Your most versatile
composite



Proclinic Expert Nano Flow is indicated for almost all types of restorations. It is radiopaque and guarantees natural-looking teeth. It contains nanofillers that improve polishing properties, wear resistance and compressive strength and UDMA resins that reduce viscosity and minimise post-operative sensitivity.

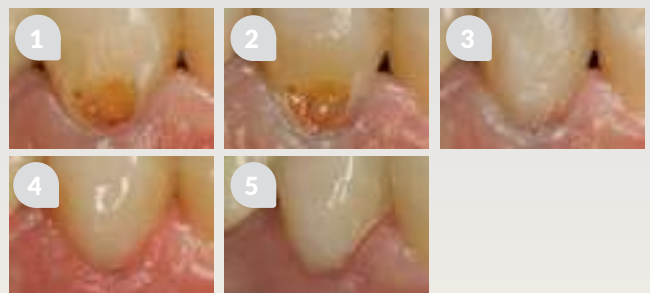
COMPRESSIVE STRENGTH

The high compressive strength of **Proclinic Expert Nano Flow** broadens its range of application possibilities.

MPa at 1 hour*



CLINICAL CASE STUDY**

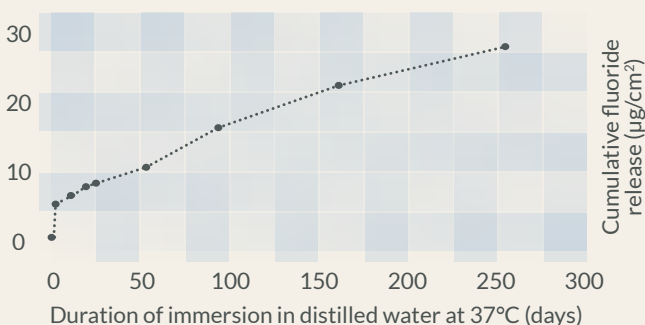


- 1/2 The patient visited the surgery with class V caries in tooth 44. After caries removal and retraction cord placement, etching was carried out with Proclinic Etching Gel and Proclinic Expert Total Etch Adhesive was then applied.
- 3 Application of Proclinic Expert Nano Flow Composite A3.5. Proclinic Expert Nano Hybrid Composite A3.5 was then applied and the restoration finished with Proclinic Expert Nano Hybrid Composite Incisal.
- 4 The retraction cord was removed and the tooth polished with fine grit diamond burs and rubber cups at low speeds.
- 5 Immediate final result.

FILLER LOAD

The high filler load of **Proclinic Expert Nano Flow** (64% by weight) gives it excellent wear resistance.

FLUORIDE RELEASE



Proclinic Expert Nano Flow Composite, syringe (2 x 1g)

Shade A1	36602	Shade A3.5	36605	Bleach	36625
Shade A2	36603	Shade B2	36623	Universal opaque	36607
Shade A3	36604	Shade C2	36624		

PROCLINIC EXPERT MICRO HYBRID



A light-cured, radiopaque, microhybrid composite for anterior/posterior restorations. It does not stick to instruments and has low shrinkage; is easy to apply and provides outstanding clinical results.



Proclinic Expert Micro Hybrid Composite, syringe (4g)

Kit ¹	Ref. 36608	Shade B2	Ref. 36613
Shade A1	Ref. 36609	Shade C2	Ref. 36614
Shade A2	Ref. 36610	Bleach	Ref. 36616
Shade A3	Ref. 36611	Incisal	Ref. 36617
Shade A3.5	Ref. 36612	Universal opaque	Ref. 36615

¹Kit contains: 5 x 4g syringes (A1, A2, A3, A3.5, B2), 1 x 5ml total etch adhesive, 2 x 2ml syringes of etching gel, 40 micro-applicators + Vita shade guide.

**Clinical case studies carried out by Dr Carlos Gargallo Gallego.



BLUE
ETCHING GEL
GREEN
ETCHING GEL
PAGE 16

TRANSPARENT
WEDGES
WOODEN
WEDGES
PAGE 16

MATRIX
STRIPS
PAGE 16

Restorative ma

NEW
PRODUCT

PROCLINIC EXPERT LED CURING LIGHT

Power and effectiveness
guaranteed

Proclinic Expert LED Curing Light

White	Ref. 37000
Black	Ref. 37001
Pink	Ref. 37002
Radiometer	Ref. 37003

1
With
protective
light shield

2
Light intensity:
1400–
1600mW/cm².
Wavelength:
440–480nm.

3
The head is at a
right angle for
easy access to
confined spaces.



■ 2-year guarantee.

■ 6 pre-set times:
5, 10, 15, 20, 25 and
30 seconds.

■ 3 curing modes:
fast, ramp and pulse.

■ Automatic
compensation circuit
ensures a constant
power output.

■ Colours: pink, black
and white.

TECHNICAL FEATURES

Fully-charged, it can
deliver over 200
ten-second cycles.

Size:
23.5 x 2.7cm
(length x diameter).

Weight: 160g.

High-performance
LED light source:
5W.

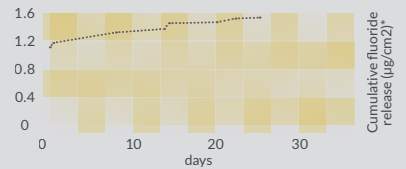


PROCLINIC EXPERT SELF-ETCH ADHESIVE

Seventh-generation adhesive. The colour changes as it cures (from dark yellow to clear), indicating when to proceed with the next step. HEMA free, preventing any possible skin irritations. Bis-GMA free.

1 unit Ref. 36600

FLUORIDE RELEASE



* Results of tests conducted by the manufacturer compared to the three best-selling products on the Spanish market.



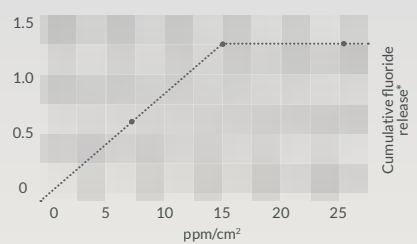
PROCLINIC EXPERT TOTAL ETCH ADHESIVE

Single-component, fifth-generation total etch adhesive for enamel and dentine. Very high bond strength thanks to complete hybridisation of dentine.

The well-infiltrated hybrid layer fully seals the dentinal tubules, minimising post-operative sensitivity. Bis-GMA free, eliminating any unwanted hormonal effects these may cause.

1 unit Ref. 36599 2 units Ref. 36598

FLUORIDE RELEASE



MONOCOMPONENT ADHESIVE

Single component adhesive which is light curable for traditional impression technique with etching gel. Excellent adherence to enamel and dentin, especially indicated for application on wet and dry dentin. No volatile disolvents, it doesn't evaporate.

5 ml

Ref. 7839

2 x 5 ml

Ref. 78399



PVC MIXING PAD

PVC mixing pads. With non-slip base.

7 x 8cm (100 units)

Ref. 49948

14 x 20cm (50 units)

Ref. 49949

MICRO-APPLICATORS

Lint free. Dispenser with 100 units.

Fine micro-applicator

Ref. 49978

Regular micro-applicator

Ref. 49979

Restorative ma



■ ETCHING GEL

Highly visible, coloured phosphoric acid. Thixotropic and medium viscosity for easy application. Comes with 12 curved tips for greater accuracy

1 x 12g syringe, blue	Ref. 0110
3 x 3.5g syringes, green	Ref. 0179



■ WOODEN WEDGES

Maple wood wedges, used to achieve tight contact points and ensure a perfect restoration. Box of 100 units.

Orange	Ref. 0188	Green	Ref. 0190
White	Ref. 0189	Yellow	Ref. 0191



■ TRANSPARENT WEDGES

The light-conducting surface assures complete curing of the restoration.

Box of 200 units	Ref. 79937
------------------	------------



■ MATRIX

Metal matrix strips, used to achieve tight contact points and ensure a perfect restoration. Thickness: 0.05mm. Length: 3m. Widths available: 5mm, 6mm and 7mm.

5mm wide	Ref. 0196
6mm wide	Ref. 0197
7mm wide	Ref. 0198

terials

AMALGAMS

40.5% Ag lathe-cut + spherical particles. High-copper ternary alloy. No gamma-2 phase. High compressive strength. Surpasses ISO 24234:2004 requirements.

No.	Capsules	mg	Ref.
1	50	400	01413
2	50	600	01423
1	500	400	01673
2	500	600	01683



METAL DAPPEN DISHES

Non-slip rubber base.

1 unit	Ref. 8070
--------	-----------

CURVED AMALGAM CARRIERS

Metal. 40° angle.

1 unit	Ref. 8063
--------	-----------



PLASTIC AMALGAM CARRIERS

Autoclavable. 2.4cm diameter. 1 unit.

Straight	Ref. 0149
45° curve	Ref. 0130
90° curve	Ref. 0131

DOUBLE-ENDED AMALGAM CARRIERS

Metal.
Size: medium/large.

1 unit	Ref. 0836
--------	-----------



Impression



■ ALGINATE, REGULAR SET

Mixing time: 30". Total setting time: 2'20". Gluten free.

906g bag with measuring cup	Ref. 0161
453g bag	Ref. 0162

■ NEW ALGINATE

Dust free. 6-year shelf life. Lead free. Easy to mix. Mint flavour. Pink. Sets in 2'.

453g bag	Ref. 01592
----------	------------

■ CHROMATIC ALGINATE

Vanilla flavour. Visual guide for mixing and setting times. Sets in 2'30".

453g bag	Ref. 0178
----------	-----------

■ FAST ORTHODONTIC ALGINATE

Fast set. Dust free. 6-year shelf life. Lead free. Easy to mix. Orange flavour. Yellow. Sets in 1'50".

453g bag	Ref. 01593
----------	------------



■ ALGINATE FLAVOURS

Add 5-7 drops to each measure of alginate for a unique flavour. Gluten free. 60ml bottle.

Banana flavour	Ref. 7935
Cherry flavour	Ref. 7936
Chocolate flavour	Ref. 7937
Strawberry flavour	Ref. 7938



■ MIXING BOWLS

1 unit.

Blue. 6cm high	Ref. 25658
Green. 9cm high	Ref. 0111



■ ALGINATE SPATULA

Stainless steel, curved blade. Plastic handle.

White	Ref. 8059
-------	-----------

PROCLINIC EXPERT BITE REGISTRATION SILICONE



Proclinic Expert Bite Registration Silicone has a Shore A hardness of 95 which ensures excellent detail reproduction.

2 x 50ml cartridges + 12 tips

Ref. 15160



Visit www.proclinic-products.com to view our complete range of plasters.



WAX SHEETS

Pink modelling wax. 450g	Ref. 0176
Pink modelling wax. For warmer climates. 450g	Ref. 01762
Pink modelling wax. 2500g	Ref. H20812
Pink modelling wax. For warmer climates. 2500g	Ref. H20802

WAX BARS

Yellow articulation wax. 500g	Ref. H20814
Green articulation wax. 500g	Ref. H20810



WAX KNIFE
Ref. 8016

HARD PLASTER, TYPE IV

For fabricating fixed/removable dentures and frameworks. Excellent casting. High abrasion resistance. Pink.

4kg tub	Ref. 0160
25kg box	Ref. H62010

HARD PLASTER, TYPE III

For fabricating removable dentures. 25kg box.

Yellow	Ref. H62011
Blue	Ref. H62012
Pink	Ref. H62013

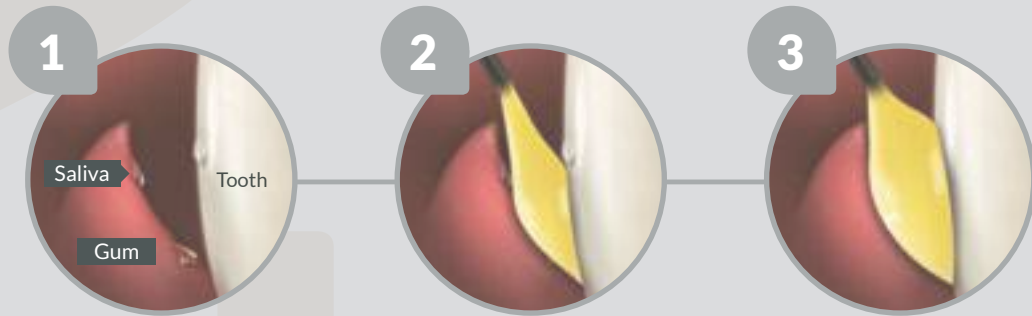
HARD ORTHODONTIC PLASTER, TYPE III

For creating orthodontic study models. Smooth surface. High strength. Extra white colour.

4kg tub	Ref. 0159
25kg box	Ref. 0199

Impression

PROCLINIC EXPERT SILICONES ALLOW RAPID, STRAIGHTFORWARD IMPRESSION-TAKING



Correctly modulated times and different viscosities suited to every clinical need. Excellent detail reproduction even in a moist environment. Highly hydrophilic, minimising the risk of pores. Ensures highly accurate impressions thanks to the outstanding properties of Proclinic Expert silicones.

*Times at 23°C	Ultra Light Body	Light Body	Light Body	Regular Body	380 Heavy Body	380 Heavy Body	380 Putty Soft	Putty Soft	Putty Soft
	Fast Set	Regular Set	Fast Set	Regular Set	Regular Set	Fast Set	Fast Set	Regular Set	Fast Set
Reorder	15156	15153	15154	15152	15158	15159	15157	15150	15151
ISO 4823	Type 3	Type 3	Type 3	Type 2	Type 1	Type 1	Type 0	Type 0	Type 0
ADA 19	Light-bodied consistency	Light-bodied consistency	Light-bodied consistency	Medium-bodied consistency	Heavy-bodied consistency	Heavy-bodied consistency	Putty consistency	Putty consistency	Putty consistency
Mixing ratio	1:1	1:1	1:1	1:1	5:1	5:1	5:1	1:1	1:1
System									
Mixing type	Auto-mixing system	Auto-mixing system	Auto-mixing system	Auto-mixing system	Auto-mixing system	Auto-mixing system	Auto-mixing system	Hand mixing	Hand mixing
Total working time	1'30"	2'	1'30"	2'	2'	1'30"	1'30"	2'	1'30"
Minimum time in mouth	2'30"	3'30"	2'30"	3'30"	3'30"	2'30"	2'30"	3'30"	2'30"
Setting time*	4'	5'30"	4'	5'30"	5'30"	4'	4'	5'30"	4'
Deformation under pressure (min - max)	3-5%	3-5%	3-5%	3-5%	3-5%	3-5%	1-3%	1-3%	1-3%
Elastic recovery	>99.5%	>99.5%	>99.5%	>99.5%	>99.5%	>99.5%	>99%	>99%	>99%
24-hour linear dimensional change	<0.20%	<0.20%	<0.20%	<0.20%	<0.20%	<0.20%	<0.20%	<0.20%	<0.20%
Shore A hardness	45±2	45±2	45±2	45±2	60±2	60±2	60±2	60±2	60±2
Suggested techniques	2-step	1-step or 2-step	1-step or 2-step	1-step or one-phase	1-step or 2-step	1-step or 2-step	1-step or 2-step	1-step or 2-step	1-step or 2-step
	LOW CONSISTENCY				HIGH CONSISTENCY				

Complete your range of silicones with Proclinic Expert Bite Registration Silicone; its Shore A hardness of 95 (15160) guarantees excellent detail reproduction.

PROCLINIC EXPERT A-SILICONES



Proclinic Expert silicones guarantee maximum precision and quality. Their nanotechnology and hydrophilic properties combine to provide detailed impressions, guaranteed dimensional accuracy and total margin integrity.

REGULAR A-SILICONE (MEDIUM BODY)

Proclinic Expert A-Silicone, Medium Body, Regular Set. 2 x 50ml cartridges + 12 tips Ref. 15152

A-SILICONE PUTTY

Proclinic Expert A-silicone putties have a new formula. 250ml base + 250ml catalyst.

Proclinic Expert A-Silicone Putty, Soft, Regular Set	Ref. 15150
Proclinic Expert A-Silicone Putty, Soft, Fast Set	Ref. 15151

LIGHT BODY A-SILICONE

Proclinic Expert A-Silicone, Light Body, Regular Set. 2 x 50ml cartridges + 12 tips + 12 intra-oral tips	Ref. 15153
Proclinic Expert A-Silicone, Light Body, Fast Set. 2 x 50ml cartridges + 12 tips + 12 intra-oral tips	Ref. 15154
Proclinic Expert A-Silicone, Ultra Light Body, Fast Set. 2 x 50ml cartridges + 12 tips + 12 intra-oral tips	Ref. 15156
Proclinic Expert A-Silicone, Light Body, Fast Set. 4 x 50ml cartridges	Ref. 15155

A-SILICONE, 380ML

Proclinic Expert auto-mix A-silicones 380ml ensure a homogeneous mix and greater convenience. Compatible with the leading auto-mixing machines on the market. 2 x 380ml + 15 mixing tips + 2 locking mechanisms.

Proclinic Expert A-Silicone 380, Putty Soft, Fast Set	Ref. 15157
Proclinic Expert A-Silicone 380, Heavy Body, Regular Set	Ref. 15158
Proclinic Expert A-Silicone 380, Heavy Body, Fast Set	Ref. 15159

Impression

PROCLINIC EXPERT SILICONES ACHIEVE OUTSTANDING RATINGS IN CLINICAL TESTS



Dr Eduardo González Arroyo
Clínica Fernández
www.oralsturgerytube.com
Dental council registration
No. 28007247

"These new silicones are even better quality than the previous generation of Proclinic silicones that I always used to use."



Dr Alexander Johansson
ZahnCity GmbH,
Zurich, Switzerland.
www.zahncity.ch

"I had never tried an ultra-light silicone before and I have discovered that Proclinic Expert Ultra Light Body silicone is better than the Light Body silicone I usually use."



**Proclinic Expert VPS
Impression Material**
++++ 1/2

THE DENTAL ADVISOR
www.dentaladvisor.com

RATINGS:
Excellent +++++
Very Good ++++
Good +++

373

**CLINICAL
APPLICATIONS**

91%

SATISFACTION

87%

of consultants consider
**Proclinic Expert silicones
TO BE AS GOOD AS
OR BETTER**

than those
they usually use

78%

RECOMMENDATION



MIXING TIPS

48 units

Ref. 0113



DISPENSING GUN

1 unit

Ref. 0156

INTRA-ORAL TIPS

100 units

Ref. 0124



RETRACTION CORD

Easy to place, non-impregnated, 100% cotton cord for rapid retraction. Dispenser with 254cm.

No. 000 - Anterior teeth	Ref. 78287
No. 00 - Friable tissues	Ref. 78288
No. 0 - Class III, IV and V restorations	Ref. 78289
No. 1 - Tissue control	Ref. 78290



BRAIDED RETRACTION CORD

Non-impregnated braided retraction cord, gives better impression results by increasing the width of the gingival sulcus. Dispenser with 225 cm.

No. 0 - Extra-fine	Ref. 49965
No. 1 - Fine	Ref. 49966
No. 2 - Medium	Ref. 49967

METAL TRAYS

Impression trays with retention lip.

10-piece set. Smooth	Ref. 7901
10-piece set. Perforated	Ref. 7980

REPLACEMENT TRAYS

Upper	Ref.	Lower	Ref.
U1	Smooth 7902	L1	Smooth 7903
	Perforated 7981		Perforated 7982
U2	Smooth 7904	L2	Smooth 7905
	Perforated 7983		Perforated 7984
U3	Smooth 7906	L3	Smooth 7907
	Perforated 7985		Perforated 7986
U4	Smooth 7908	L4	Smooth 7909
	Perforated 7987		Perforated 7988
U5	Smooth 7910	L5	Smooth 7911
	Perforated 7989		Perforated 7990



RETRACTION CORD INSTRUMENT

Ref. 80425



Cements

NEW
PRODUCT

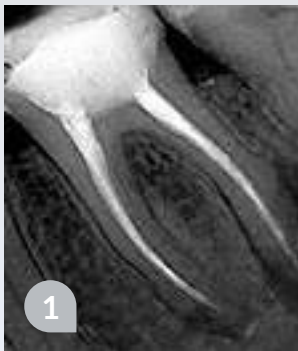


PROCLINIC EXPERT ROOT CANAL SEALER

Eugenol free



Radiopaque cement formulated especially for permanent root canal fillings in combination with gutta-percha points. Comprising a two-component epoxy/amine resin paste that incorporates insoluble, antibacterial, disinfectant macromolecules.



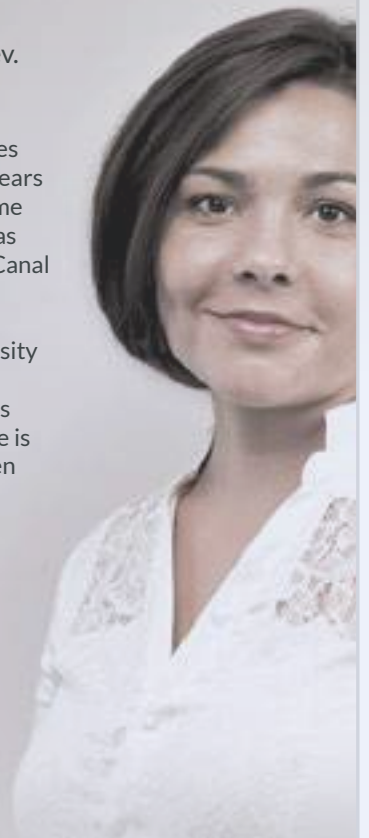
The sealer is easily placed in the root canal using either a cone or lentulo spiral. Its optimal viscosity allows it to fill all branches off the main root canal.



The X-ray shows there are no diseased hotspots and the bone has been completely repaired (points of infection have been filled with tissue, which, given its density, must be bone).

Dr Chepinskaya
Smile Plus Clinic, Kiev.

"I used a well-known epoxy resin sealer for gutta-percha techniques for a long time. A few years ago I decided to try some newer materials, such as Proclinic Expert Root Canal Sealer, which contains antibacterial particles. Its relatively high viscosity and wettability means it adheres to canal walls magnificently and there is a minimal layer between gutta-percha cones."



Proclinic Expert Root Canal Sealer

1 x 10g syringe + 10 mixing tips + 10 intra-oral tips + 1 mixing pad

Ref. 78550



PROCLINIC EXPERT MTA

Bioceramic

NEW
PRODUCT



Proclinic Expert MTA
1g (1g powder + 3ml distilled water) Ref. 78551

White, radiopaque, bioceramic endodontic repair cement containing Mineral Trioxide Aggregate (MTA)-based mineral oxides and featuring unique properties.

INDICATIONS

1

- Direct pulp capping
- Pulpotomy



Initial X-ray



60 days later

2

- Root perforations (canals and furcations)
- Root perforations due to internal root resorption



Initial X-ray



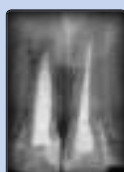
3 years later

3

- Apexification / Apexogenesis
- Retrograde filling



Initial X-ray



18 months later



Proclinic Expert MTA
+ + + + 1/2

THE DENTAL ADVISOR
www.dentaladvisor.com

RATINGS:
Excellent +++++
Very Good ++++
Good +++

201

tests
in clinical
applications

91%

satisfaction

85%

of consultants
consider it
**TO BE AS GOOD
AS OR BETTER**
than other
brands

KEY FEATURES

Feature	Poor	Satisfactory	Good	Very good	Excellent
Container					
Easy to mix					
Working time					
Retention					

CONSULTANTS WHO WOULD:

Change to
Proclinic Expert MTA **81%**

Recommend
Proclinic Expert MTA **88%**

Cements

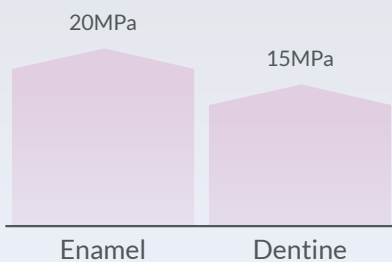
NEW
PRODUCT

PROCLINIC EXPERT DUAL RESIN CEMENT Eugenol free



Permanent self-etch, self-adhesive, dual-cure resin cement.
More aesthetic results thanks to the two shades, dentine and enamel, which are used to match the cement shade to the tooth and inlay.

BOND STRENGTH



SHADE STABILITY

Proclinic Expert
Dual Resin Cement
after curing



Proclinic Expert
Dual Resin Cement
stored in the
dark and dried at
 $37\pm 2^{\circ}\text{C}$ for 7 days

250%
Al radiopacity

Fluoride-releasing,
minimises the risk of
recurrent cavities

Taste- and odour-
free for increased
patient comfort
during treatment

Proclinic Expert Dual Resin Cement: 1 x 8g syringe;
10 mixing tips; 10 fine, angled, intra-oral tips;
10 XX-fine, angled, intra-oral tips

Dentine shade

Ref. 78552

Translucent shade

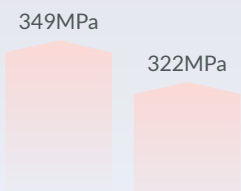
Ref. 78553

PROCLINIC EXPERT CORE BUILD UP and post cement



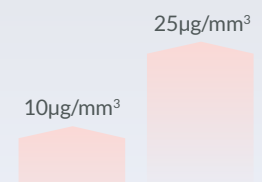
A highly radiopaque, flowable, dual-cure composite with excellent mechanical properties for core build up. Supplied in auto-mix syringes for simple, convenient application.

COMPRESSIVE STRENGTH



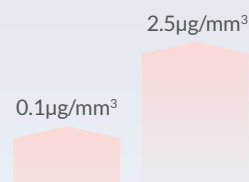
Proclinic Expert Other brands

WATER ABSORPTION



Proclinic Expert Other brands

WATER SOLUBILITY



Proclinic Expert Other brands



Dr Eduardo González Arroyo
Clínica Fernández. www.oralsturgerytube.com
Dental council registration No.: 28007247
"The intrinsic problems of core build up restorations are overcome by using a strong, easy-to-use, fast-setting material, such as the new Proclinic Expert Core Build Up"

Proclinic Expert Core Build Up. Dentine shade

1 x 10g syringe + 5 mixing tips + 5 intra-oral tips

Ref. 78560



PROCLINIC EXPERT GLASS IONOMER CEMENT

Type I glass ionomer cement specifically indicated for cementing crowns, bridges, inlays, onlays and orthodontic bands and sealing pits and fissures.

15g powder + 10ml liquid

Ref. 78555



PROCLINIC EXPERT RESIN MODIFIED GLASS IONOMER CEMENT

Fluoride-releasing resin modified glass ionomer cement for luting metal, resin, metal/ceramic and all-ceramic crowns, bridges and onlays.

15g powder + 10ml liquid + 3ml conditioner

Ref. 78556

Cements

NEW
PRODUCT

PROCLINIC EXPERT TEMPORARY CEMENT

Eugenol-free, elastic polymer



Eugenol-free, elastic polymer cement. Indicated for long-term cementation of implant-supported crowns and bridges and temporary cementation of crowns and bridges to natural teeth. Provides good retention, easy removal, high radiopacity and low solubility.



**Dr Juan Alberto
Fernández Ruiz**
Clínica Fernández.
www.oralsturgerytube.com
Dental council registration
No.: 07000598

“Around 95% of the restorations I perform are screwed directly onto implants, but when I have to use cement, I don't hesitate to reach for the new and totally reliable Proclinic Expert Temporary Cement”

SETTING STAGES

From 2' to 2.5'
1
GEL-SET STAGE

REMOVE
EXCESS
MATERIAL

From 4' to 5'
2
FINAL SETTING

Proclinic Expert Temporary Cement

1x 6g auto-mix syringe + 5 mixing tips

Ref. 78576



PROCLINIC EXPERT PURE CALCIUM HYDROXIDE PASTE

Indicated for temporary root fillings, pulp capping, perforation repairs and lining deep cavities.

1.5ml syringe + 5 applicator tips

Ref. 7947



MIXING TIPS, TYPE 11

50 units

Ref. 78566

TEMPORARY CEMENT

Cement available with or without eugenol for temporary cementation of prostheses. Withstands chewing forces. Easy to remove. 50g base + 15g catalyst.

Without eugenol

Ref. 35217

With eugenol

Ref. 35215



TEMPORARY RESTORATIVE MATERIAL

Zinc oxide-based cement for use in long-term temporary restorations or as a restoration base.

40g powder + 20ml liquid

Ref. 7828



TEMPORARY FILLING MATERIAL

Different hardnesses ensure a specific solution for each case. Grey cement indicated for temporary inlays and ivory cement for temporary canal fillings. 40g jar.

Ivory

Ref. 0155

Grey

Ref. 01552



ZINC PHOSPHATE CEMENT

Indicated for permanent cementation of inlays, crowns, bridges and orthodontic bands.

80g powder + 55ml liquid

Ref. 35218



DOUBLE-ENDED CEMENT SPATULA



1 unit

Ref. 8004

Endodontics



K-FILES

Used to widen root canals before filling. Made of stainless steel. Box of 6 units.

No.	Ref.	Ref.	Ref.	No.	Ref.	Ref.	Ref.
	21mm	25mm	31mm		21mm	25mm	31mm
06	49907	49909		40	8140	8127	81037
08	49908	49910	81030	45	8141	8128	81038
10	8134	8121	81031	50	8142	8129	81039
15	8135	8122	81032	60	8143	8130	81040
20	8136	8123	81033	70	8144	8131	81041
30	8137	8124	81034	80	8145	8132	81042
40	8138	8125	81035		8146	8133	81043
50	8139	8126	81036	Nos. 15-40 set	8162	8161	81044

NITI FILES

Made of nickel titanium for greater flexibility and shape memory. Box of 6 units.

No.	Ref.	Ref.	No.	Ref.	Ref.
	21mm	25mm		21mm	25mm
15	7701	7713	45	7707	7719
20	7702	7714	50	7708	7720
30	7703	7715	60	7709	7721
40	7704	7716	70	7710	7722
	7705	7717	80	7711	7723
	7706	7718		7712	7724

H (HEDSTROEM) FILES

Their spiral shape is excellent for cleaning root canals before filling. Made of stainless steel. Box of 6 units.

No.	Ref.	Ref.	No.	Ref.	Ref.
	21mm	25mm		21mm	25mm
08	49911	49912	45	77268	8155
10	77261	8148	50	77269	8156
15	77262	8149	60	77270	8157
20	77263	8150	70	77271	8158
30	77264	8151	80	77272	8159
40	77265	8152		77273	8160
	77266	8153	Nos. 15-40 set	77274	8163
	77267	8154			

PAPER POINTS, ISO COLOUR-CODED

ISO colour-coded points for easy, accurate identification. Box of 200 units.

No.	Ref.	No.	Ref.
15	8184	45	8190
20	8185	50	8191
30	8186	60	8192
40	8187	70	8193
	8188	80	8194
	8189		8195

PAPER POINTS, .04 AND .06 TAPER

Fit instruments with the same taper. Box of 100 units.

No.	Ref.	Ref.	No.	Ref.	Ref.
	.04 taper	.06 taper		.04 taper	.06 taper
15	81800	81807	35	81804	81811
20	81801	81808	40	81805	81812
30	81802	81809	Nos. 15-40 set	81806	81813
40	81803	81810			





GUTTAPERCHA POINTS, ISO COLOUR-CODED

ISO colour-coded points for easy, accurate identification. Box of 120 units (6 tubes x 20 units).

No.	Ref.	No.	Ref.	No.	Ref.	No.	Ref.
15	8101	35	8104	45	8107	65	8110
20	8102	35	8105	50	8108	75	8111
25	8103	40	8106	55	8109	80	8112

GUTTAPERCHA POINTS, .04 AND .06 TAPER

Fit instruments with the same taper so the root canal can be filled with just a single gutta-percha point. Box of 60 units.

No.	Ref.	Ref.	No.	Ref.	Ref.	No.	Ref.	Ref.	
		.04 taper			.06 taper			.04 taper	.06 taper
15	81782	81792	35	81785	81795	45	81788		
20	81783	81793	35	81786	81796	Nos. 15-40 set		81781 81791	
25	81784	81794	40	81787	81797	Nos. 45-90 set		81789	

NON-STANDARDISED GUTTAPERCHA POINTS

Designed for filling root canals. Box of 100 units.

XX-fine	Ref. 8196	X-fine (A)	Ref. 8197	Fine (B)	Ref. 8198	Medium (C)	Ref. 8199
---------	-----------	------------	-----------	----------	-----------	------------	-----------

SPREADERS/PLUGGERS

For lateral and vertical condensation of gutta-percha. Made of stainless steel. Box of 6 units.



Pointed		Ref.	Flat tip		Ref.
No.	25mm		No.	25mm	
15	7731		20	7737	
20	7732		25	7738	
25	7733		30	7739	
30	7734		35	7740	
35	7735				
40	7736				
Nos. 15-40 set		7730			



LENTULO SPIRALS

Designed to place filling pastes in the root canal without forming air bubbles. Made of stainless steel. Box of 4 units.

No.	Ref.	No.	Ref.
25mm		25mm	
15	8180	35	8182
20	8181	40	8183



REAMERS

Used to widen root canals. Made of stainless steel. Box of 6 units.

		Ref.	Ref.			Ref.	Ref.
No.	21mm	25mm		No.	21mm	25mm	
06	49913	49915		40	77281	8171	
08	49914	49916		45	77282	8172	
10	77275	8165		50	77283	8173	
15	77276	8166		55	77284	8174	
20	77277	8167		60	77285	8175	
25	77278	8168		65	77286	8176	
30	77279	8169		80	77287	8177	
35	77280	8170		Nos. 15-40		77288	8164

Endodontics



RUBBER DAM
PUNCH

Ref. 8061

RUBBER DAM FORCEPS

Ref. 8064

RUBBER DAM FRAME

Ref. 8082



RUBBER DAM, MEDIUM GAUGE, GREEN

Pre-cut, powder-free and tear-resistant (24MPa) dental dams. Less than $50\mu\text{g}/\text{dm}^3$ of protein and less than 2mg of residual powder per dam. Dimensions: 15 x 15cm.

36 units

Ref. 0125

ROOT CANAL PREPARATION CREAM

EDTA (ethylenediaminetetraacetic acid). Helps widen root canals, dissolve pulp tissue and remove the smear layer. Its lubricating effect also makes it easier to use files. Used to remove pathological mineral content (pulpitis, calcifications, etc.) and easily removed due to being highly soluble in water. Antibacterial action.

4 x 1.5g syringes + 6 tips

Ref. 49933





PEESO REAMERS

Reamers used for widening root canal walls. 32mm long. Box of 6 units.

No.	Ref.	No.	Ref.
1	81019	4	81022
2	81020	5	81023
3	81021	6	81024



GATES GLIDDEN DRILLS

Drills used to widen the canal entrance, thus improving access for manual and mechanical instruments. 32mm long. Box of 6 units.

No.	Ref.	No.	Ref.
1	8113	4	8116
2	8114	5	8117
3	8115	6	8118



SPONGES

1cm thick (25 units)	Ref. 49954
0.5cm thick (50 units)	Ref. 49955

ENDO STOPS

Autoclavable at 134°C, blue.

100 units	Ref. 79938
-----------	------------

SPONGE HOLDERS

Made of autoclavable plastic. 1 unit.

Green	Ref. 49952
Blue	Ref. 49953

ENDODONTIC BOX

Box for 16 endodontic instruments, with ruler.

Endo box. With 25 sponges	Ref. 49956
4.5 x 4.5cm sponges (25 units)	Ref. 49957

Burs

Fabricated with a coating that doubly strengthens the adherence of the diamond, resulting in a better, smoother, sharper and more durable cut.

ISO, CE and FDA certified: cutting-edge research and development coupled with the strictest quality control.



MAXIMUM CUTTING QUALITY



Ask our sales team about our complete range or visit our website
WWW.PROCLINIC-PRODUCTS.COM

801 - 314 - 009

↑
ISO model No.

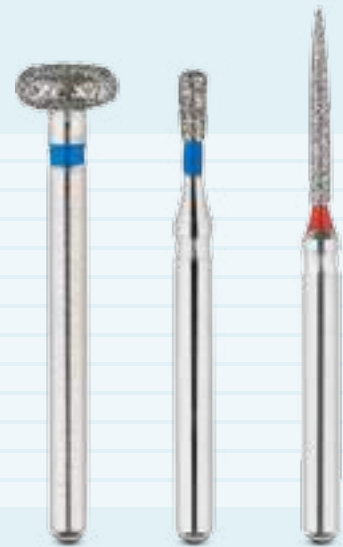
↑
Shank length

↑
Size

DIAMOND BURS FOR TURBINE

3 UNITS

Image	Shape	Model	Extra fine	Fine	Medium	Coarse	Super coarse
	Round	801, 801L, 802		■	■		
	Egg	379	■		■		
	Inverted cone	805, 806, 807			■		
	Pear	830			■		
	Wheel	909			■		
	Football	368	■	■	■	■	
	Cylinder	835, 836, 837			■	■	■
	Flat end taper	847, 848, 856, 850			■	■	■
	Torpedo	877, 878, 879			■		
	Needle	852, 858, 859	■	■	■	■	
	Tapered, round edge	R-847, R-848			■		
	Flame	862		■			



TUNGSTEN CARBIDE BURS FOR TURBINE

3 UNITS

Image	Shape	Model
	Round	3, 4, 5, 6, 7, 8
	Inverted cone	35, 36
	Cylinder	57L
	Tapered	169L, 170L
	Pear	330, 331



TUNGSTEN CARBIDE BURS FOR CONTRA-ANGLE

3 UNITS

Image	Shape	Model
	Round	2, 3, 4, 5, 6, 7, 8
	Inverted cone	35, 36



METAL AND CROWN CUTTING BURS FOR TURBINE

3 UNITS

Image	Shape	Model
	Cylinder	558RX
	Tapered	701RX
	Pear	1958



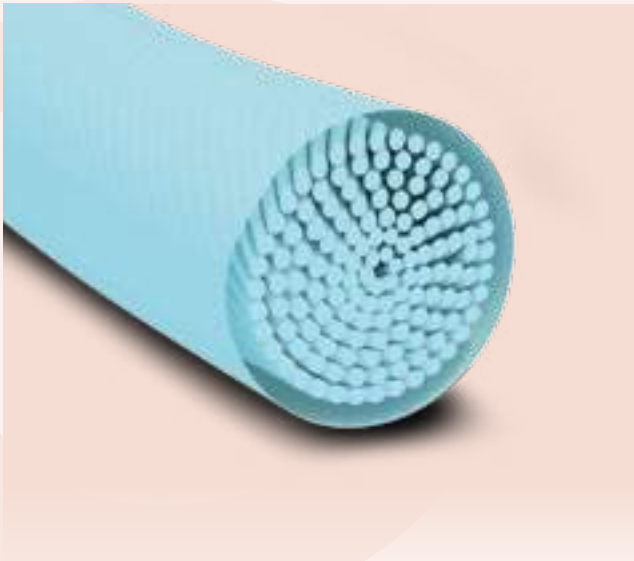
ENDO-Z BURS

5 UNITS

Image	Shape	Model
	Zekrya	Endo Access 152
	Zekrya	151-Z



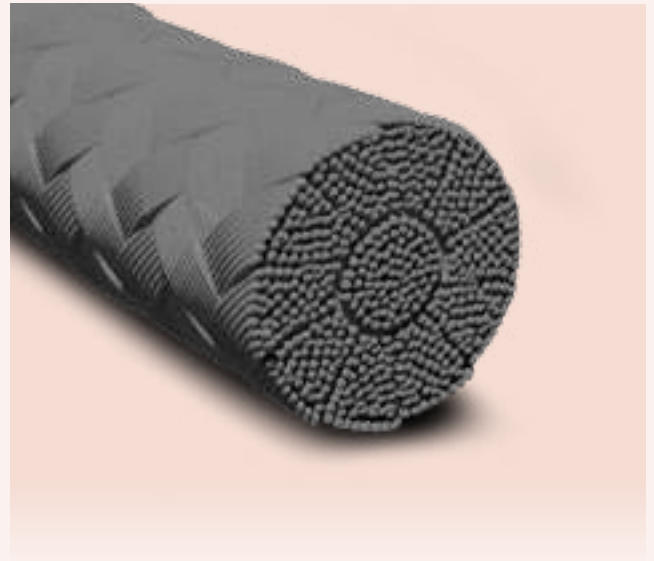
Sutures and Bi



■ SUPRAMID SUTURES

75cm long suture. Synthetic, non-absorbable monofilament suture. Black, manufactured from polyamide 6 or polyamide 6/6 sheathed with a polyamide 6 coating and sterilised by gamma radiation. Comes with an atraumatic, stainless steel needle. Supramid® sutures are known for their resistance to degradation and consistent tensile strength. They are indicated for general and plastic surgery.

4/0 (3/8-T19mm)	Ref. 49945
5/0 (3/8-T16mm)	Ref. 49944
4/0 (1/2-T22mm)	Ref. 50000
3/0 (1/2-T22mm)	Ref. 50001
4/0 (3/8-T16mm)	Ref. 50002
4/0 (1/2-T20mm)	Ref. 50004



■ SILK SUTURES

75cm long suture. Non-absorbable, braided, natural suture. Black, manufactured from beeswax- or silicone-coated fibroin and sterilised by gamma radiation. Comes with an atraumatic, stainless steel needle. Silk sutures are known for their resistance to degradation and consistent tensile strength. They are indicated for general, skin, vascular, plastic and gastrointestinal surgery, and whenever tissues need to be sutured or ligated with a non-absorbable material.

2/0 (1/2-R.22mm)	Ref. 49934	3/0 (3/8-T19mm)	Ref. 49939
2/0 (1/2-T.22mm)	Ref. 49935	4/0 (1/2-R.22mm)	Ref. 49995
2/0 (3/8-T19mm)	Ref. 49968	4/0 (1/2-T.20mm)	Ref. 49940
3/0 (1/2-R.20mm)	Ref. 49936	4/0 (1/2-T.22mm)	Ref. 49996
3/0 (1/2-R.22mm)	Ref. 49969	4/0 (1/2-T.26mm)	Ref. 49941
3/0 (1/2-T.20mm)	Ref. 49937	4/0 (3/8-T16mm)	Ref. 49997
3/0 (1/2-T.22mm)	Ref. 49993	4/0 (3/8-T19mm)	Ref. 49942
3/0 (1/2-T.26mm)	Ref. 49938	5/0 (1/2-T.22mm)	Ref. 49998
3/0 (3/8-T16mm)	Ref. 49994	5/0 (3/8-T19mm)	Ref. 49943



omaterials



■ PGA SUTURES

45 cm long suture. Braided, synthetic suture with full absorption after 90-120 days. Colourless, manufactured from several strands of polyglycolic acid (PGA) coated with polycaprolactone and calcium stearate and sterilised using ethylene oxide. Comes with an atraumatic, stainless steel needle. PGA sutures are known for their gradual loss of tensile strength as they are absorbed and metabolised by the body. They are indicated for soft tissue approximation and wherever medium absorption times are required.

3/0 -(3/8-T-19mm)	Ref. 49999
3/0 -(1/2-T-22mm)	Ref. 50003
5/0 -(3/8-T-16mm)	Ref. 50005
4/0 -(3/8-T-16mm)	Ref. 50006



■ HAEMOSTATIC SPONGES

Gelatine sponges (of porcine origin) with powerful haemostatic and healing properties. Freeze-dried gelatine with a porous structure and high fluid absorption capacity. Absorbed in 15 days. Supplied as 1cm cubes that have been sterilised by gamma radiation.

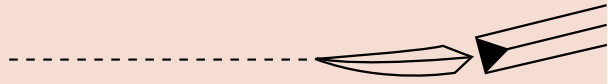
Box of 40 units

Ref. 35211



■ TRIANGULAR SUTURE NEEDLES (T):

These needles have a triangular cross-section and therefore three cutting edges. Used for piercing hard tissues. Triangular suture needles can be grouped into two main types:



TC



TC, 1/2 circle needle.

Needle lengths are numbered as follows:
20mm = 12; 22mm = 14; 26mm = 16

TB

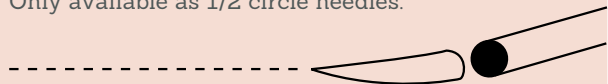


TB, 3/8 circle needle.

Needle lengths are numbered as follows:
16mm = 12; 19mm = 15

■ TAPER SUTURE NEEDLE (C or R, DEPENDING ON THE MANUFACTURER):

Round cross-section with blunt, tapered point. Used for easily penetrated soft tissues, known for causing minimal damage to the tissue. Only available as 1/2 circle needles.



■ SUTURE SIZE

Suture size is indicated as 0/0, with smaller numbers representing larger sizes. For example, a 2/0 suture has a larger diameter than a 6/0 suture.

Syringes



HYPODERMIC NEEDLES

Sterilised and individually packaged for improved handling. Silicone coated, triple bevelled and plastic hub. They are also compatible with all of the most common syringes and syringe systems.

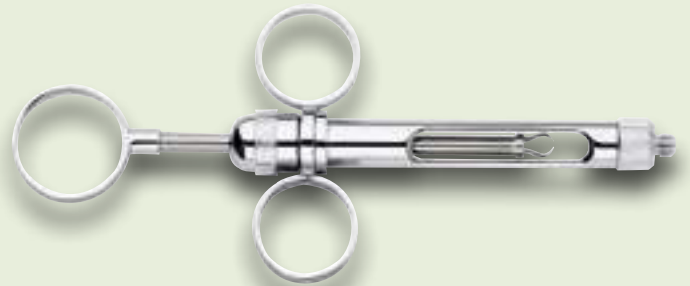
27G - 0.4x35mm	Ref. 7925
30XG - 0.3x16mm	Ref. 7928
30G - 0.3x21mm	Ref. 7923
30G - 0.3x25mm	Ref. 7924
30XG - Short 0.3x12mm	Ref. 7926

3-RING ASPIRATING SYRINGE

Made of stainless steel, with double-hook system.

1 unit

Ref. 7929

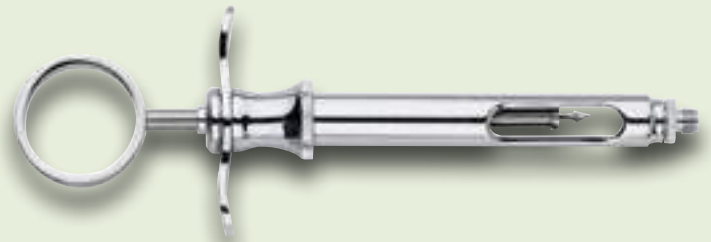


1-RING ASPIRATING SYRINGE

Made of stainless steel, with harpoon system.

1 unit

Ref. 79120



SELF-ASPIRATING SYRINGE

Self-aspirating, plastic and stainless steel syringe, without spring or harpoon.

1 unit

Ref. 8084



Posts

FIBREGLASS AND CARBON FIBRE POSTS

Anatomical, radiopaque posts that offer optimal affinity with dentine cements. Available in a wide range of diameters.

8 units	Fibreglass	Translucent fibreglass	Carbon fibre
Diameter	Ref.	Ref.	Ref.
Ø 10mm	7791	7746	7796
Ø 12 mm	7792	7747	7797
Ø 14mm	7793	7748	7798
Ø 16mm	7794	7749	7799
Kit: 30 units and 4 drills	7790	7745	7795



STERILE, WHITE FIBREGLASS R+ POSTS

These posts feature a coronal portion for retention so are particularly indicated for medium and large reconstructions. Radiopaque.

Box of 10 units	
Ø 10mm	Ref. 78284
Ø 12mm	Ref. 78285
Ø 14mm	Ref. 78286



STERILE, WHITE FIBREGLASS POSTS

Particularly indicated for small reconstructions or those with long roots. Radiopaque.

Box of 10 units	
Ø 10mm	Ref. 78281
Ø 12mm	Ref. 78282
Ø 14mm	Ref. 78283



POST DRILLS

Made of stainless steel and available in a wide range of diameters. Compatible with all Proclinc post systems. Box of 1 unit.

Ø 10mm	Ref. 77919	Ø 14mm	Ref. 77939
Ø 12mm	Ref. 77929	Ø 16mm	Ref. 77949



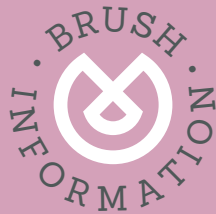
Prophylaxis

PROPHYLAXIS PASTE

Oil-free, medium grit abrasive paste for rapid plaque removal and polishing with minimal wear. Formulated with menthol and a pleasant strawberry flavour. Fluoride free.

180g tub

Ref. 0158



SOFT BRUSHES

Indicated for sensitive areas or areas near the gingival margin.

MEDIUM BRUSHES

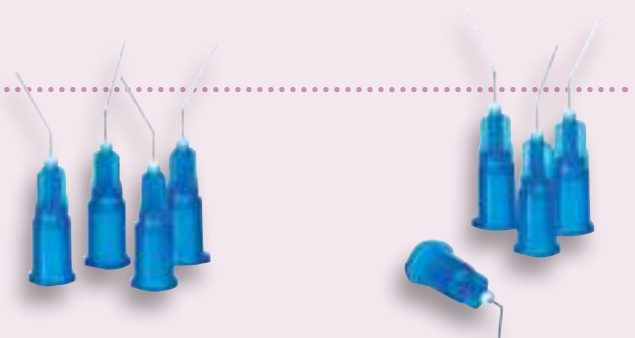
Ideal for most clinical cases.

HARD BRUSHES

Indicated for removing stubborn stains and any discolouration.

BRUSHES AND CUPS FOR CONTRA-ANGLE

	HARD	MEDIUM	SOFT
Nylon brushes	■	■ □	■
Latex rubber cups		□	
Latex-free rubber cups	■	■	■



PIT AND FISSURE SEALANT

Covers the entire surface thanks to its outstanding viscosity. It also helps to prevent caries by releasing fluoride after sealing pits and fissures.

2 x 1.2ml sealant
+ 2 x 1.2ml etching gel + 14 tips

Ref. 49932



Polishers



■ POLISHERS

Polishers for contra-angle handpieces, supplied in a range of colours, shapes and grit sizes for trimming, polishing and finishing reconstructions in amalgam, gold, etc. Box of 10 units.

Trimming. Cup, black.	Ref. 0180	Polishing. Mini-point, brown.	Ref. 0184
Trimming. Point, black.	Ref. 0181	Finishing. Cup, green.	Ref. 0185
Polishing. Cup, brown.	Ref. 0182	Finishing. Point, green.	Ref. 0186
Polishing. Point, brown.	Ref. 0183	Finishing. Mini-point, green.	Ref. 0187

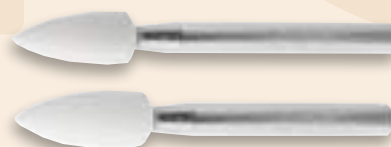


■ POLISHING BRUSHES, GOLDEN

Cup-shaped polishing brushes embedded with silicon carbide for rapid, straightforward polishing of occlusal surfaces of composite, compomer or ceramic restorations without having to use a polishing paste.

Bag of 5 units

Ref. 81005



■ ARKANSAS STONE POINTS

High-quality, fine grit, aluminium oxide abrasive polisher with ceramic binder for an extra-fine finish. Especially indicated for rapid, accurate finishing of composite and ceramic. Available for turbine and contra-angle handpieces. Box of 10 units.

For FG	Ref. 01872
For CA	Ref. 01873



■ POLISHING STRIPS

Polyester, 4-mm wide, medium-coarse grit finishing strips with a neutral central strip.

Box of 150 units

Ref. 0116



■ INTERPROXIMAL STRIPPING STRIPS

12cm long abrasive strips. The kit includes a holder and 6 double-sided, 4-mm wide strips; both can be dry heat or cold sterilised or autoclaved.

Kit	Ref. 7940	
	Ref.	Ref.
Width	Single-sided, 0.1mm	Double-sided, 0.2mm
4mm	7941	7944
6mm	7942	7945
8mm	7943	7946

■ STAINLESS STEEL SEPARATING STRIPS

Stainless steel, 4-mm wide abrasive strips with a neutral central strip.

Pack of 12 units

Ref. 0117

Prosthetics



ARTICULATING PAPER

200-micron thick paper with high-quality progressive colour transfer that perfectly highlights points of premature contact. Box of 300 strips.

Blue	Ref. 0195
Red	Ref. 01952



ARTICULATING PAPER FORCEPS

Made of stainless steel. To help with articulating paper placement.

1 unit	Ref. 8003
--------	-----------

42



ARTICULATING PAPER, THIN

Ultra-thin, 40-micron paper for accurately highlighting points of premature contact. Box of 120 strips.

Blue	Ref. 01955
Red	Ref. 01954



CROWN AND BRIDGE RESIN

Material used to fabricate temporary crowns and bridges, inlays and onlays with outstanding mechanical properties. Produces lifelike, aesthetic restorations with no sensitivity or irritation. Rapid, easy handling and self-cures at low temperatures. 75g cartridge.

A2	Ref. 69400
A3	Ref. 69401



REINFORCEMENT RIBBON

Ribbon made of strong, high-density polyethylene fibres. Fully compatible with flowable composites, resins and adhesives. This product does not have an expiry date and its special braiding yields a clean cut. The kit includes a pair of scissors for cutting the ribbon. 50cm rolls.

Kit + Scissors	Ref. 7729	2mm	Ref. 7742	4mm	Ref. 7744
1mm round	Ref. 7741	3mm	Ref. 7743		

X-Ray



PHOSPHOR PLATE BARRIER ENVELOPES

Barrier envelopes that preserve X-rays in perfect quality and ensure patient comfort and safety by avoiding cross-contamination. Their special, ergonomic design simplifies opening and they are compatible with the different plate sizes currently available.

Size 0 - 2 x 3cm (100 units)

Ref. 49992

Size 1 - 2 x 4cm (100 units)

Ref. 20497

Size 2 - 3 x 4cm (300 units)

Ref. 49991

43



X-RAY FILM MOUNTS

Envelopes for storing periapical X-rays, packaged as a continuous strip with easy-to-separate individual units that are designed to be written on.

Box of 1008 units

Ref. 49990



X-RAY FILM HANGER WITH CLIPS

Metal hanger for X-ray films with 10 clips.

1 unit

Ref. 8072

X-RAY FILM CLIPS

Long hanger and made of metal.

Bag of 6 units

Ref. 8083

Disinfection



■ INSTRUMENT DISINFECTANT AND DETERGENT

Aldehyde-free 2% solution with broad spectrum of activity, compatible with all dental materials thanks to the presence of corrosion inhibitors.

1 litre	Ref. 49890
5 litres	Ref. 49891

■ ENZYMATIC INSTRUMENT DISINFECTANT AND DETERGENT

Tri-enzymatic, aldehyde-free 2% solution with broad spectrum of activity and corrosion inhibitors. Contact time: 5 minutes. Neutral pH and pleasant citrus scent.

1 litre	Ref. 49892
5 litres	Ref. 49893

■ FILE AND BUR DISINFECTANT AND DETERGENT

Ready to use. Aldehyde-free formula with broad spectrum of activity. Contact time: just 15 minutes.

2 litres	Ref. 49894
----------	------------



■ SURFACE DISINFECTANT AND DETERGENT

Ready to use. Alcohol- and aldehyde-free formula with broad spectrum of activity, compatible with all types of material. No added scents or colours.

750ml	Ref. 49895
-------	------------

■ SURFACE DISINFECTANT

Ready to use. Aldehyde-free and low-alcohol formula.

1 litre	Ref. 49896
5 litres	Ref. 49897



■ DISINFECTANT WIPES

Aldehyde-free, alcohol-based formula with broad spectrum of activity. Disinfecting time: just 30 seconds. With a pleasant lemon scent.

Tub with 100 wipes	Ref. 49898
Refill, 100 units	Ref. 49899



■ ASPIRATION SYSTEM DISINFECTANT AND DETERGENT

Compatible with all aspiration systems. With a fresh scent. Aldehyde-free and with a broad spectrum of activity. Dilute to 2%.

1 litre	Ref. 49900
5 litres	Ref. 49901



■ ANTISEPTIC GEL

Water and alcohol-based gel with broad spectrum of activity for hygienic and surgical hand disinfection; no rinsing required. Disinfecting time: just 30 seconds. Contains moisturisers and emollients.

500ml	Ref. 49904
-------	------------

■ MILD SOAP

Glycerine-enriched hand wash for frequent use. Does not contain any fragrances or colours. Neutral pH.

500ml	Ref. 49902
2 litres	Ref. 49903



■ STERILISATION POUCHES

Self-sealing. With sterilisation indicator.

Box of 200 units	Ref.	Box of 200 units	Ref.
6 x 11cm	79931	9 x 23cm	79932
7 x 26cm	79930	14 x 25cm	79933
9 x 16cm	79954	33 x 44cm	79947



■ STERILISATION ROLLS

With sterilisation indicator.

	Ref.		Ref.
5cm x 200m	79934	15cm x 200m	79950
7.5cm x 200m	79935	25cm x 200m	79951
10cm x 200m	79936		

Disposables



PROTECTIVE VISORS

With autoclavable frame. Excellent transparency. Covers the nose, eyes and mouth. Box of 12 units.

Visor protection + Frame	Ref. 49958
Visor protection	Ref. 49959



LATEX GLOVES

Talc free. Lightly dusted with corn starch (Keoflo®). High quality. Each glove is tested electronically. AQL 1.5. Compliant with ASTM D3578-91 and DIN 58994 standards. White. Box of 100 units.

Large	Ref. 0138	Small	Ref. 0140
Medium	Ref. 0139	Extra small	Ref. 0170

POWDER-FREE LATEX GLOVES

Talc-free latex gloves with an inner polymer coating to protect the user from contact with latex to prevent allergies and make them easier to put on. White. Box of 100 units.

Large	Ref. 55010	Small	Ref. 55030
Medium	Ref. 55020	Extra small	Ref. 55040

POWDER-FREE NITRILE GLOVES

Micro-textured and non-slip. Excellent tear resistance. Made from hypoallergenic materials. Blue. Box of 100 units.

Large	Ref. 7837	Small	Ref. 7834
Medium	Ref. 7835	Extra small	Ref. 7838

PAPER BIB HOLDER



1 x 40cm chain	Ref. 8081
----------------	-----------



FACE MASKS

With a soft texture and elastic ear loops. 3-ply antimicrobial filter barrier with BFE = 98.85% at 3.1µm, in compliance with EN 14683:2005. Box of 50 units.

Green	Ref. 0150
Blue	Ref. 01500
Pink	Ref. 01501



■ SALIVA EJECTORS

Made entirely from non-toxic materials. Flexible and with a metal core. Removable tip. 15cm long. Bag of 100 units.

Clear	Ref. 0122	Red/Fuchsia	Ref. 0122R
Opaque white	Ref. 0123	Yellow	Ref. 0122M
Green	Ref. 0122V	Orange	Ref. 0122N
Blue	Ref. 0122A	Lilac	Ref. 0122L

■ DISPOSABLE DAPPEN DISHES



Plastic. Can be slotted onto trays or held in the user's hand. Bag of 200 units.

Assorted colours	Ref. 49951
------------------	------------

■ COTTON ROLL DISPENSER

Strong plastic construction.

White	Ref. 0148
Blue	Ref. 01489

■ COTTON DISPENSERS

Made of stainless steel.

Dispenser	Ref. 80882
Waste container	Ref. 80883

■ PELLET DISPENSER

Autoclavable plastic.

White	Ref. 0115
-------	-----------

■ HAND TOWEL DISPENSER

Made of methacrylate. 17 x 17 x 14cm

Clear	Ref. 0157
-------	-----------



■ COTTON CELLULOSE ROLLS

Premium quality. 300g bag.

No. 1	Ref. 0101
No. 2	Ref. 0102
No. 3	Ref. 0103

■ HOSE SLEEVES

Box of 250 units.

No. 1 Hose and syringe. 5.5cm	Ref. 49972
No. 2 FG and CA hose. 4.5cm	Ref. 49973

■ BARRIER FILM

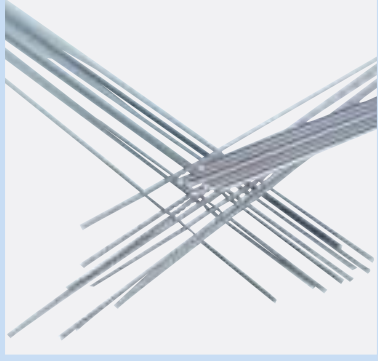
Box of 1200 units.

Blue barrier film	Ref. 49970
Clear barrier film	Ref. 49971



Orthodontics

We guarantee the best nickel titanium alloys in all our archwires and straight lengths.



■ All our archwires must pass 14 different quality control tests before being released for sale. They undergo regular testing.

■ Outstanding elasticity
Consistent forces
Shape memory



Ask our sales team about our complete range or visit our website

WWW.PROCLINIC-PRODUCTS.COM

PROCLINIC EXPERT ARCHWIRES



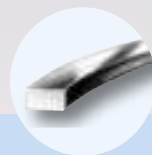
STRAIGHT LENGTHS

ARCHWIRES		
STAINLESS STEEL	NiTi	COPPER NiTi
Smooth	Super-elastic	Without stops
Braided, 3 strands	Super-elastic, thermal properties	With stops
Braided, 8 strands	Super-elastic, reverse curve of Spee	
With 2 T-loops	Super-elastic, aesthetic	
With 2 Bull loops		
With 4 Bull loops		
Aesthetic		

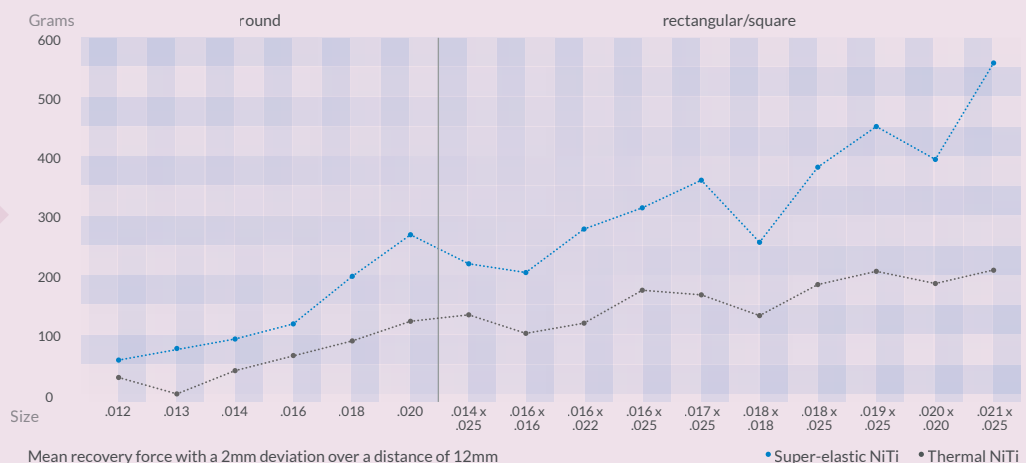
See all measurements and shapes on our website www.proclinic-products.com

Availability of shapes depends on the type of archwire: Standard, Trueform and Europa II.

STRAIGHT LENGTHS
BRAIDED WIRE (in straight lengths and on spools)
3 strands
6 strands
7 strands
STAINLESS STEEL
Round
Rectangular
COLBOLOY BLUE
Round
Rectangular



Recovery forces of Super-elastic NiTi archwires compared to Thermal NiTi archwires



Orthodontics



■ METAL AND AESTHETIC BRACKETS

We work with the most common techniques for each type of bracket.

Available with or without canine and premolar hooks.

Colour coded.

Metal:
 • with nickel
 • nickel-free

Aesthetic:
 • ceramic with metal slot
 • composite



	Metal	Metal, nickel-free	Metal with vertical slot	Metal Mini and Midi	Composite	Ceramic with silver slot	Ceramic
Roth technique, .018	✓	✓		✓	✓		✓
Roth technique, .022	✓	✓	✓	✓	✓	✓	✓
Standard Edgewise technique, .018	✓	✓			✓		✓
Standard Edgewise technique, .022	✓	✓			✓		✓
MBT technique, .018				✓			
MBT technique, .022		✓		✓		✓	



■ DIRECT BOND BUCCAL TUBES

Stainless steel MIM tubes.

■ DIRECT BOND LINGUAL BUTTONS

Curved button, 10 units	Ref. L0816
Flat button, 10 units	Ref. L0817

■ T-HOOKS FOR VERTICAL-SLOT BRACKETS

Made of stainless steel. Used for placing elastic bands on vertical-slot brackets.

50 units	Ref. L3074
----------	------------



■ SPIN SELF-LIGATING BUTTON

A self-ligating button that offers new heights in terms of ease of use and clinical efficacy as it eliminates the need for more complex ligating systems.

10 units	Ref. L1870
----------	------------

■ ELASTIC TUBING

Aesthetic, non-allergenic and latex-free tubing.

■ ARCHWIRE HOOKS

Bag of 10 units.

Hooks .018"	Ref. L3263
Hooks .022"	Ref. L3264

■ GOLD EXTRUSION HOOK

1 unit	Ref. L0946
--------	------------

■ NEET SEPARATORS

Nickel titanium Neet Separator springs provide sufficient force to separate contact points prior to ligating. .018" diameter wire.

20 units	Ref. L0856
----------	------------

■ CRIMPABLE STOPS FOR ARCHWIRES AND STRAIGHT LENGTHS

These crimpable stops hold archwires in place or restrict the movement of teeth for increased control during orthodontic treatments. Indicated for use with round and rectangular archwires, from .018" up to .021" x .025". MIM manufacturing technology.

10 units	Ref. L6024
----------	------------

■ ELASTIC THREAD

Hollow elastic thread for producing longer lasting knots.



Ask our sales team about our complete range of brackets and attachments or visit our website

WWW.PROCLINIC-PRODUCTS.COM

Orthodontics



INSTRUMENTS

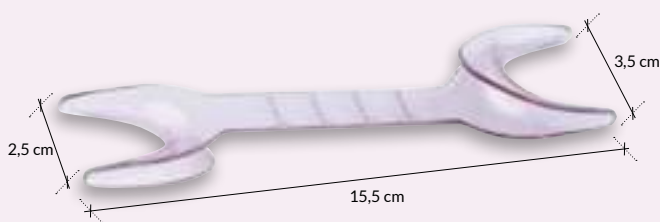
Manufactured from top-quality stainless steel and designed for ease of use and maximum efficiency in all dental treatments.

State-of-the-art technology and extremely strict quality control checks are used throughout the manufacturing process.

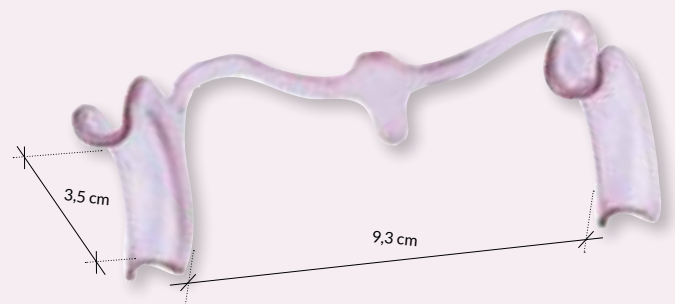
Essential for bending round wires



CE marking guarantees compliance with EU standards



LIP RETRACTOR



CHEEK RETRACTOR



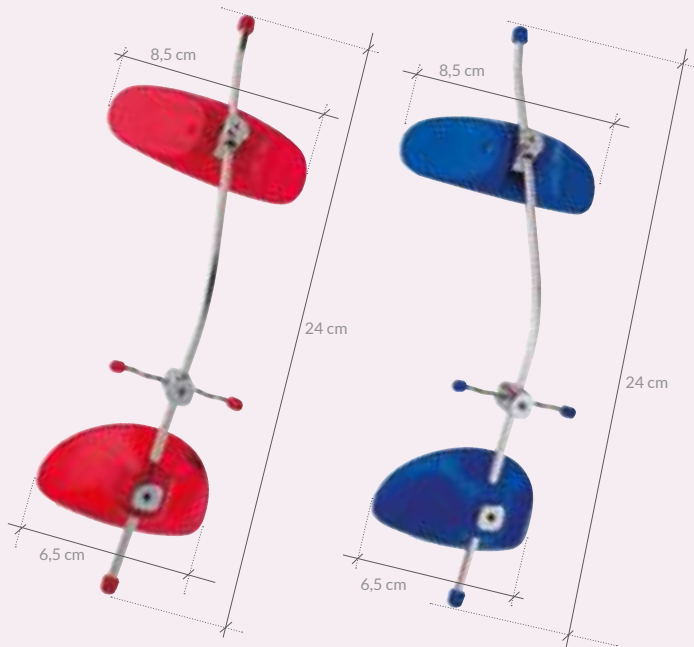
See our complete range of retractors and more than 800 Proclinic orthodontic products on our website

WWW.PROCLINIC-PRODUCTS.COM

■ INTRA-ORAL AND EXTRA-ORAL APPLIANCES AND WAXES



Elastic ligature ties	Rotation wedges	Chains
Chain ligature ties	Intra-oral elastic bands	NiTi springs
Metal ligature ties	Spacers	Elastomeric modules
Elastic bands	Quad Helix	Goshgarian palatal bars



■ ADJUSTABLE FACE MASK

This face mask can be adjusted in several directions to guarantee the best traction possible. The kit includes one face mask, one Allen key, one replacement chin pad and replacement forehead pads.

Blue	Ref. L0210
Red	Ref. L0211

■ ORTHODONTIC WAX

Reduces any irritation caused by brackets. Pack of 25 boxes, each containing 5 bars.

Unflavoured	Ref. L0430
Cherry flavour	Ref. L0431
Apple flavour	Ref. L0432
Mint flavour	Ref. L0433

■ ORTHODONTIC SILICONE

Better quality than wax. Stays on bracket wings for longer.

Pack of 25 boxes	Ref. L0336
------------------	------------

■ CHIN CUP

Two-hook, suede-coated chin cup with foam rubber liner. Features ventilation holes for improved comfort.

1 unit	Ref. L0213
--------	------------

Laboratory

PROCLINIC EXPERT A-SILICONE



Biocompatible A-silicone specifically developed for laboratory use with a high final hardness (85 Shore A) and ideal elasticity. Outstanding detail reproduction with no deformation in flask. Excellent heat resistance (+200°C). Blue.

MIXING TIME 30"

1



WORKING TIME 2'

2



SETTING TIME 6'

3



KEY FEATURES

-0.058%

Minimal linear shrinkage after 24 hours

85 Shore A

Final hardness

+200°C

Excellent heat resistance

Proclinic Expert A-Silicone

Base + Catalyst (2.5kg + 2.5kg)

Ref. H00194

*Warning: Latex gloves may prevent A-silicones from setting correctly. We recommend washing your hands thoroughly or using vinyl gloves. Keep the contact surface clean and dry.

PROCLINIC EXPERT C-SILICONE



C-silicone specifically developed for laboratory use with high hardness (85 Shore A) and resistance to elastic deformation. Outstanding detail reproduction with no deformation in flask. Excellent heat resistance (140°C).

KEY FEATURES

+140°C

Excellent heat resistance

20µm

Detail reproduction

-0.10%

Dimensional variation after 24 hours

Proclinic Expert C-Silicone

Putty 5kg

Ref. H00195

Catalyst 60ml

Ref. H00196

Marcel Ferrer

Dental prosthesis technician
Oral Design Clinic, Andorra
Dental council registration
No. 1436

“Proclinic Expert silicone for laboratory use has given me excellent results. It reproduces all types of detail in high definition and has an ideal consistency for the fabrication of both fixed and removable prostheses. It is convenient to use on a daily basis, easily trimmed with a scalpel and does not contain any irritants.”



Laboratory



EXTRA HARD PLASTER, TYPE IV

Extra-hard natural plaster for demanding restorations, such as cores or implant-supported overdentures.

Grey, 6kg	Ref. H62020
Grey, 18kg	Ref. H62021
Golden brown, 18kg	Ref. H62022



V-SHAPED BI-PIN WITH SLEEVE AND RUBBER STOP

Nickel-plated, V-shaped bi-pin with adjustable sleeve and rubber stops.

1000 units	Ref. H20701
------------	-------------



DIE SPACER

Fast-drying, low viscosity die spacer. 15ml bottle with brush.

Red, 8µm	Ref. H20657
Blue, 10µm	Ref. H20658
Silver, 13µm	Ref. H20659
Gold, 15µm	Ref. H20660



MAGNET SYSTEM

Practical for attaching and removing plaster models from the articulator.

Magnet, 10 units	Ref. H20684	Magnet holder, 100 units	Ref. H20687
Magnet, 100 units	Ref. H20685	Magnet plate, 10 units	Ref. H20688
Magnet holder, 10 units	Ref. H20686	Magnet plate, 100 units	Ref. H20689

DOWEL PINS

Brass dowel pins, 22mm.

1000 units	Ref. H20692
------------	-------------



PROSCAN ANTI-GLARE SCAN SPRAY

Anti-glare scan spray for laser scanning; compatible with all materials (metal, PMMA, Ti); creates a film of very fine pigments; 100% water soluble and easy to dispense.

400ml	Ref. H20818
-------	-------------





OCCLUSION SPRAY

Articulating spray used to highlight occlusal points, ideal for adjusting crowns and bridges.

Green	Ref. H20663	Blue	Ref. H20665
Red	Ref. H20664	White	Ref. H20666



FINISHING AND SANITISING SPRAY

Mint-flavoured prosthesis finishing spray, perfect for removing polish residues.

Spray with nozzle, 100ml	Ref. H20820
Spray, 75ml	Ref. H20700



GLASS BEADS

Lead-free, sodium microspheres with 100% non-abrasive particles – do not deform or scratch metal. Non-toxic.

4.5kg, 50µm	Ref. H62008
-------------	-------------

ALUMINIUM OXIDE

99.60% purity, controlled crystallisation. Does not cause silicosis. White.

5kg, 50µm	Ref. H62000	25kg, 50µm	Ref. H62004
5kg, 100µm	Ref. H62001	25kg, 100µm	Ref. H62005
5kg, 150µm	Ref. H62002	25kg, 150µm	Ref. H62006
5kg, 250µm	Ref. H62003	25kg, 250µm	Ref. H62007



LIGHT-CURED BASE PLATES

Light-cured base plates, 2.2mm thick. Very easy to mould, very strong and easily adapted to the model. Pink.

50 units	Ref. H20822
----------	-------------



ARTICULATING WAX, BARS

Bars of bite registration wax. 500g box.

Green	Ref. H20810
Yellow	Ref. H20814

Laboratory

■ Diamond discs.

Manufactured from premium-quality stainless steel components coated with natural diamond to ensure an efficient cutting action and durability.

■ Tungsten carbide cutters.

Manufactured from high-quality tungsten carbide and available in the most widely used cutting patterns. Balanced and machined precision. ISO colour coded.

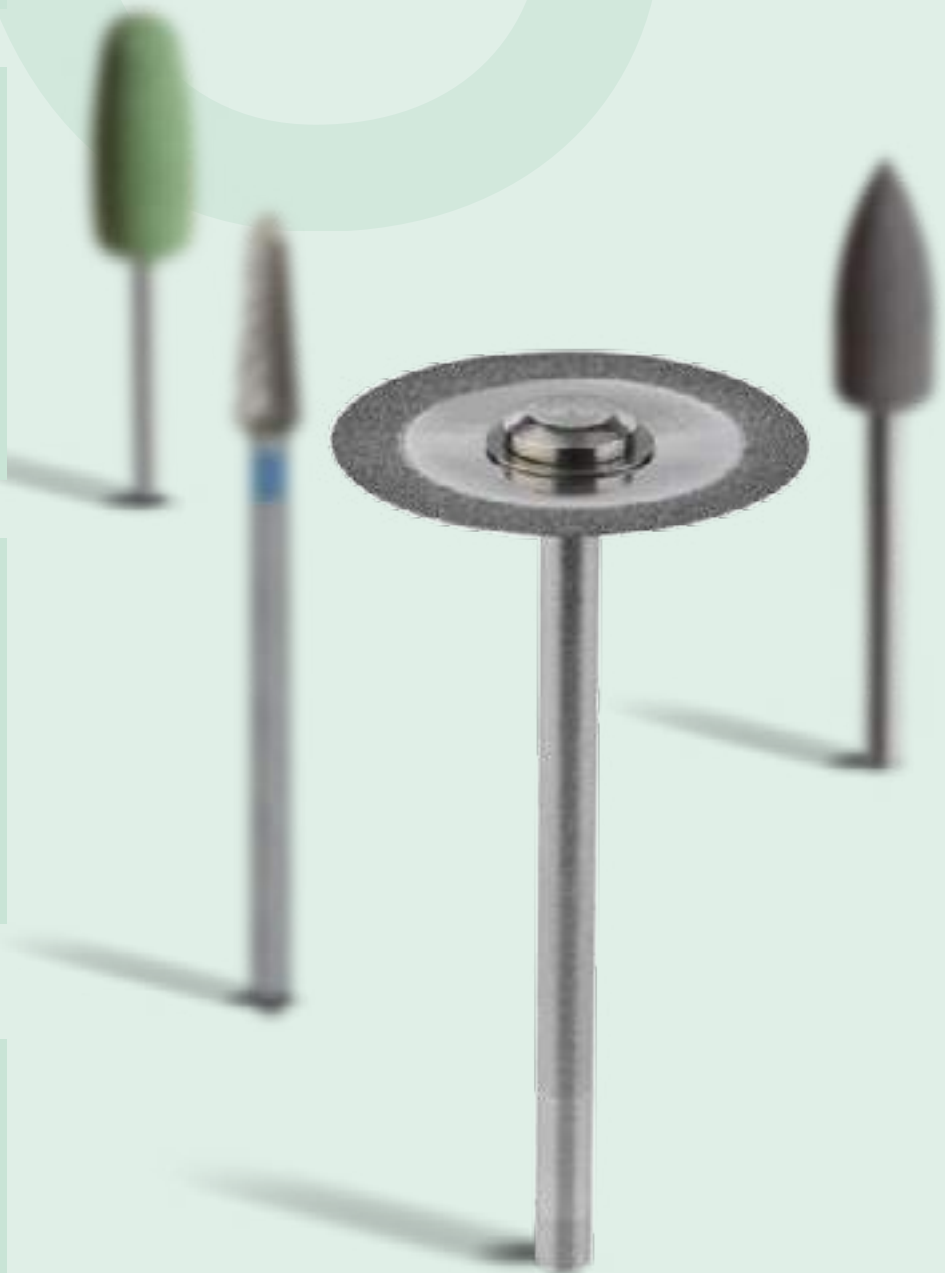
■ Polishers for acrylic.

Manufactured from aluminium oxide to obtain high-quality surfaces that perform optimally from pre-polishing to high-gloss polishing.



Ask our sales team
about our complete
range or visit
our website

WWW.PROCLINIC-
PRODUCTS.COM



SUPERFLEX HP DISCS

Super-flexible diamond discs with extra-fine grit.

1
UNIT



Ø 22 x 0.17mm	Ref. H20912
Ø 19 x 0.17mm	Ref. H20913
Ø 18 x 0.17mm	Ref. H20914
Ø 10 x 0.17mm	Ref. H20916

METAL CUTTING DISCS

Aluminium oxide discs for cutting metals with double fibreglass reinforcement.

20
UNITS



Ø 22 x 0.2mm	Ref. H20784
Ø 22 x 0.3mm	Ref. H20786
Ø 22 x 0.5mm	Ref. H20788
Ø 40 x 0.5mm	Ref. H20790
Ø 40 x 0.7mm	Ref. H20792
Ø 40 x 1.0mm	Ref. H20794

TUNGSTEN CARBIDE CUTTERS

For cutting and trimming acrylics, composites, alloys and plasters. 2.35mm shank.

1
UNIT

Image	Model	Extra fine	Fine	Medium	Double cut	Coarse	Coarse GSQ	Extra coarse	Fine spiral
	71			■					
	77			■					
	79	■	■	■	■	■			■
	129			■	■				■
	136				■				
	137			■					
	138		■	■	■				
	139				■				
	251		■	■			■	■	■
	257		■	■					
	261		■	■					
	295			■					
	351							■	
	361					■			



SILICONE POLISHERS FOR ACRYLIC

Box of 12 units.

Coarse grit, 10 x 20mm (max. 12,000rpm)	Ref. H20824
Medium grit, 10 x 20mm (max. 12,000rpm)	Ref. H20826
Fine grit, 10 x 20mm (max. 12,000rpm)	Ref. H20828
Coarse grit, 10 x 24mm (max. 12,000rpm)	Ref. H20830
Medium grit, 10 x 24mm (max. 12,000rpm)	Ref. H20832

Fine grit, 10 x 24mm (max. 12,000rpm)	Ref. H20834
Coarse grit, 6 x 16mm (max. 20,000rpm)	Ref. H20836
Medium grit, 6 x 16mm (max. 20,000rpm)	Ref. H20838
Fine grit, 6 x 16mm (max. 20,000rpm)	Ref. H20840
Coarse grit, 13 x 20mm (max. 10,000rpm)	Ref. H20842

New products

We are always endeavouring to add new products to the Proclinic brand so that we can offer you an even wider range to cover all your treatment and technical requirements. We regularly consult international bodies and dental care professionals to seek out products of outstanding quality.

Dental dam



■ ENDODONTICS

Rubber dams available in different sizes (adult and child sizes) and colours (green and blue).

ISO colour-coded gutta-percha and paper points for variable-taper file systems.

Guttapercha points



■ AESTHETICS

Tooth whitening.

Complete range of products for bonding veneers with acid, silane and primer.

■ PROSTHETICS

Soft and hard relining resins.



To learn more about our new products, ask our sales team or visit our website

WWW.PROCLINIC-PRODUCTS.COM

■ WE HAVE ALSO EXTENDED OUR RANGE OF CEMENTS AND DISINFECTION PRODUCTS.

INSTRUMENTS

Our new range of clinical instruments present dental healthcare professionals with innovation, top quality and excellence.

Their characteristics are guaranteed through compliance with ISO standards 9001 and 13485.

Made in Europe using state-of-the-art, high-precision technology.

We have carefully selected raw materials by looking at the finer details so we can promise you optimal performance during every procedure.





Search by category

Change language >



Home - About us - Quality - Contact
Distributors - New products - Catalogues and brochures



> 2500 references



Product list

Other catalogues and brochures

New products

Search

If you can't find the product you are looking for in this catalogue, please visit

www.proclinic-products.com



