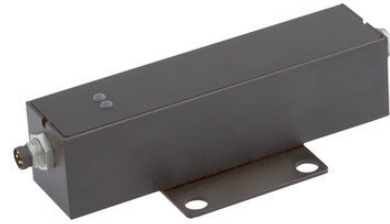


## AO000570

### OPTICAL SENSORS • SWITCHING AMPLIFIERS



#### MECHANICAL FEATURES

Device design	Field device
Height	27.5 mm
Housing design	Cuboid
Housing material	Aluminum
Length	117 mm
Mounting method	Floor fastening
Width	40 mm

#### ELECTRICAL FEATURES

Number of channels	1
Number of pins	5
Rated operation frequency (MAX)	10 Hz
Rated supply voltage at DC	19 V ... 30 V
Suitable for safety functions	-
Switching voltage	24 V
Type of electrical connection	Plug-in connection M8
Type of electrical output	Plug-in connection M8
Type of voltage supply	Active
With LED display	+

#### OTHER FEATURES

Operating temperature	5 °C ... 45 °C
-----------------------	----------------

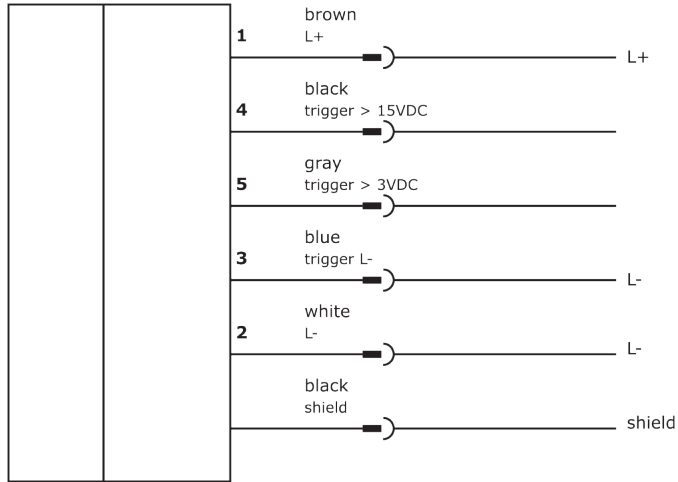
#### Other

Packaging dimensions	99.0mm x 60mm x 160mm
Shipping weight	0.19kg
Tariff code	90319000

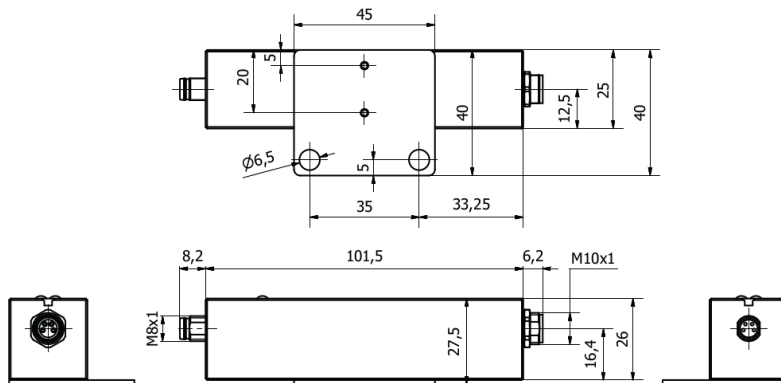
## Classification

ipf product group	915
eClass 8.0	27210121
eClass 9.0	27210121
eClass 9.1	27210121
ETIM-5.0	EC001485
ETIM-6.0	EC001485
ETIM-7.0	EC001485

## Connection



## Dimensional drawing



## Installation



Mounting / installation may only be carried out by a qualified electrician!

## Disposal



## Software

Please download the software or driver required for operating your new device on our homepage: [www.ipf.de](http://www.ipf.de)

## Safety warnings

Before initial operation, please make sure to follow all safety instructions that may be provided in the product information. Never use these devices in applications where the safety of a person depends on their functionality. LED lighting systems can generate intensive UV radiation, which can damage your eyes in case of improper use. The manufacturer cannot be held responsible for damages that result from improper use or connection.