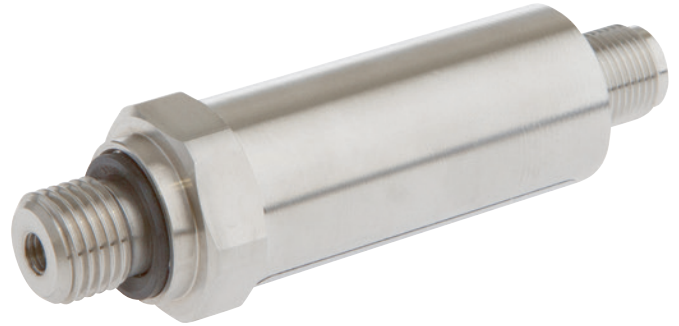


DT98E170

PRESSURE SENSORS • CONNECTION G1/4" OUTER

pressure transmitter, -0.2-0.2bar, 8-30V DC, G1/4 inch A, 8-30V DC, 4-20mA, Stainless steel 1.4404



MECHANICAL FEATURES

Bursting pressure	6 bar
Housing material	Stainless steel 1.4404
Max. operating pressure	200 hPa
Medium temperature	-40 °C ... 120 °C
Nominal pressure	0.2 bar
Pressure transmitter	+
Type of pressure connection	G1/4 inch A

ELECTRICAL FEATURES

Measuring range pressure	-0.2 bar ... 0.2 bar
Operating voltage	8 V ... 30 V
Rated operating voltage U _e at DC	8 V ... 30 V
Relative measurement accuracy	0.5 %
Type of analog output	4 mA ... 20 mA
Voltage type	DC

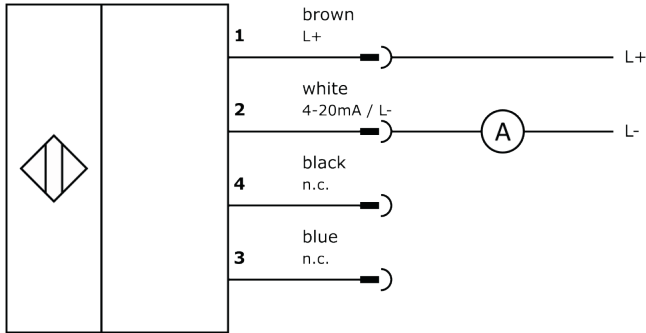
Other

Packaging dimensions	43.0mm x 43.0mm x 105.0mm
Shipping weight	0.12kg
Tariff code	90262020

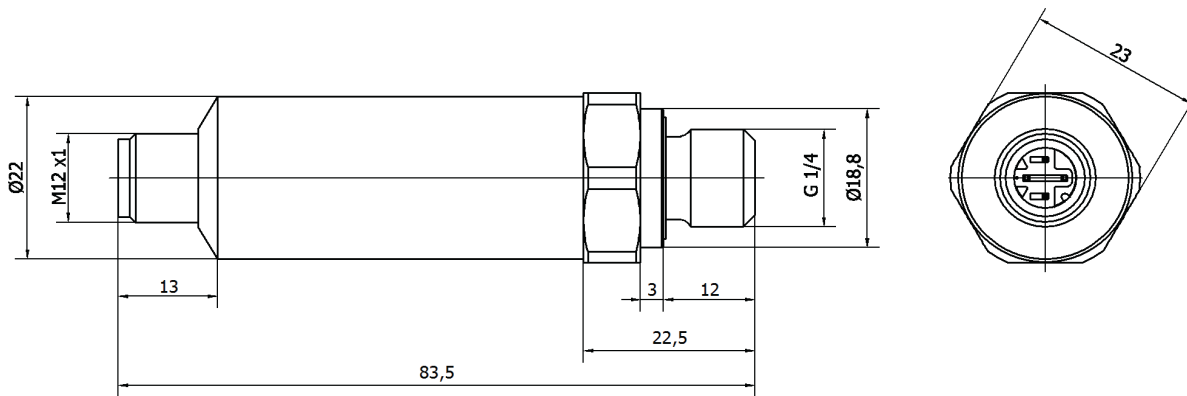
Classification

ipf product group	700
eClass 8.0	27371814
eClass 9.0	27371814
eClass 9.1	27371814
ETIM-5.0	EC000243
ETIM-6.0	EC000243
ETIM-7.0	EC000243

Connection



Dimensional drawing



Installation

Disposal



Mounting / installation may only be carried out by a qualified electrician!



Software

Any software, drivers or IODD files that may be required to operate your device can be downloaded free of charge from our homepage: www.ipf-electronic.com

Safety warnings

Before initial operation, please make sure to follow all safety instructions that may be provided in the product information. Never use these devices in applications where the safety of a person depends on their functionality. LED lighting systems can generate intensive UV radiation, which can damage your eyes in case of improper use. The manufacturer cannot be held responsible for damages that result from improper use or connection.