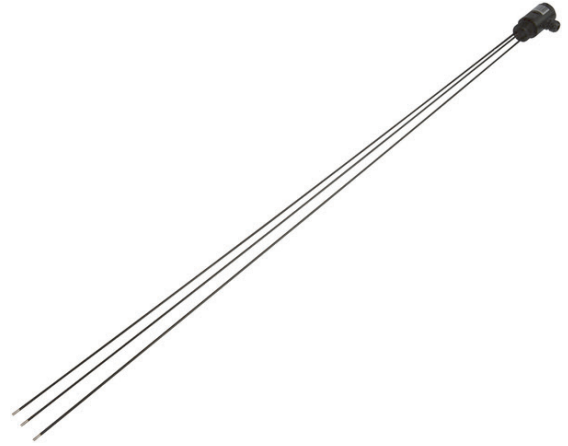


FS926030

FILLING LEVEL SENSORS • CONDUCTIVE

sensor filling level, Conductive, 1 inch 1052long, G1 inch, 100°C, Amplifier Amplifier, Clamp 3pin, Polyamid+Stainless steel 1.4571, IP65, probe 3x Ø4mm 1000long



MECHANICAL FEATURES

Ambient temperature	-10 °C ... 100 °C
Degree of protection (IP)	IP65
Design	Special construction
Housing material	Polyamide
Increased ambient temperatures > 80°C	+
Medium temperature	-20 °C ... 100 °C
Pressure resistance	10 bar
Probe diameter	4 mm
Probe length	1000 mm
Sensing element material	Stainless steel 1.4571
Sensor diameter	40 mm
Sensor height	52 mm
Sensor length	1052 mm
Thread length	15 mm
Thread size, inches	1 inch
Type of process connection	G1 inch

ELECTRICAL FEATURES

Number of pins	3
Number of probes	3
Physical measurement principle	Conductive
Type of electrical connection	Clamps
Type of switching function	Amplifier
Type of switching output	Amplifier

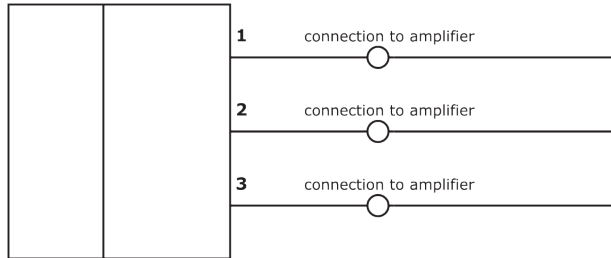
Other

Packaging dimensions	70mm x 50mm x 1170mm
Shipping weight	0.5kg
Tariff code	85365019

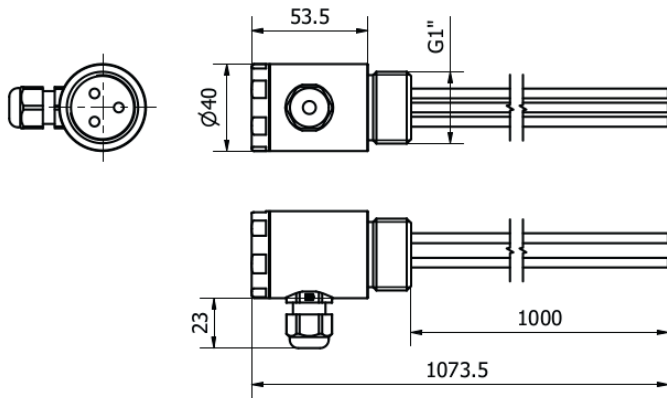
Classification

ipf product group	350
eClass 8.0	27371813
eClass 9.0	27371813
eClass 9.1	27371813
ETIM-5.0	EC001447
ETIM-6.0	EC001447
ETIM-7.0	EC001447

Connection



Dimensional drawing



Installation



Mounting / installation may only be carried out by a qualified electrician!

Disposal



Software

Any software, drivers or IODD files that may be required to operate your device can be downloaded free of charge from our homepage: www.ipf-electronic.com

Safety warnings

Before initial operation, please make sure to follow all safety instructions that may be provided in the product information. Never use these devices in applications where the safety of a person depends on their functionality. LED lighting systems can generate intensive UV radiation, which can damage your eyes in case of improper use. The manufacturer cannot be held responsible for damages that result from improper use or connection.