

IB050106

INDUCTIVE SENSORS • INCREASED SWITCHING DISTANCE

sensor inductive, M5x0.5 25long, Flush, Sn: 1.5, 10-30V DC, PNP NO, IO-Link, Cable 5m PUR (Polyurethane), IP67, Stainless steel 1.4404



MECHANICAL FEATURES

| | |
|--|------------------------|
| | IV000197 |
| Active area material of sensor | PA 6.6 (synthetic) |
| Ambient temperature | -25 °C ... 70 °C |
| Cable length | 5 m |
| Degree of protection (IP) | IP67 |
| Housing design | Cylinder, screw-thread |
| Housing material | Stainless steel 1.4404 |
| Material of cable sheath | PUR (Polyurethane) |
| Max. tightening torque | 1.5 Nm |
| Mechanical mounting condition for sensor | Flush |
| Number of cores | 3 |
| Pressure-proof | - |
| Sensor length | 25 mm |
| Thread length | 20 mm |
| Thread pitch | 0.5 mm |
| Thread size, metric | 5 |

ELECTRICAL FEATURES

| | |
|-----------------------------------|--------|
| Cascadable | - |
| Correction factor (aluminum) | 0.4 |
| Correction factor (brass) | 0.5 |
| Correction factor (copper) | 0.4 |
| Correction factor (St37) | 1 |
| Correction factor (stainl. steel) | 0.75 |
| Hysteresis | 10 % |
| IO-Link compatible | + |
| No-load current | 10 mA |
| Norm measuring plate | 5x5x1 |
| Rated switching current | 200 mA |
| Relative repeat accuracy | 2 % |
| Reverse polarity protection | + |
| Short-circuit protection | + |
| Suitable for safety functions | - |

ELECTRICAL FEATURES

| | |
|--|-----------------------|
| Supply voltage | 10 V ... 30 V |
| Switching distance | 1.5 mm |
| Switching frequency | 3000 Hz |
| Type of electrical connection | Cable |
| Type of switching function | Normally open contact |
| Type of switching output | PNP |
| Voltage drop | 2 V |
| Voltage type | DC |
| With LED display | + |
| With monitoring function of downstream devices | - |

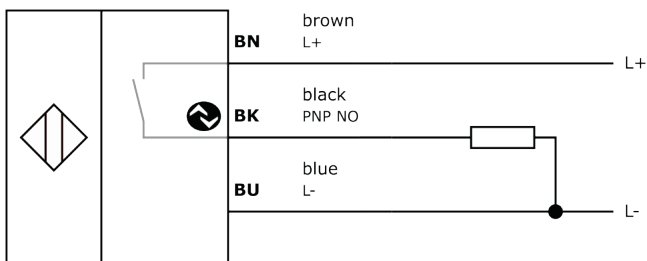
Other

| | |
|----------------------|---------------------------|
| Packaging dimensions | 77.0mm x 25.0mm x 123.0mm |
| Shipping weight | 0.08kg |
| Tariff code | 85365019 |

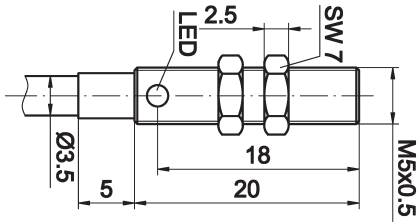
Classification

| | |
|-------------------|----------|
| ipf product group | 201 |
| eClass 8.0 | 27270101 |
| eClass 9.0 | 27270101 |
| eClass 9.1 | 27270101 |
| ETIM-5.0 | EC002714 |
| ETIM-6.0 | EC002714 |
| ETIM-7.0 | EC002714 |

Connection



Dimensional drawing



Installation



Mounting / installation may only be carried out by a qualified electrician!

Disposal



Software

Any software, drivers or IODD files that may be required to operate your device can be downloaded free of charge from our homepage: www.ipf-electronic.com

Safety warnings

Before initial operation, please make sure to follow all safety instructions that may be provided in the product information.

Never use these devices in applications where the safety of a person depends on their functionality.

LED lighting systems can generate intensive UV radiation, which can damage your eyes in case of improper use. The manufacturer cannot be held responsible for damages that result from improper use or connection.