

IB05010H

INDUCTIVE SENSORS • INCREASED SWITCHING DISTANCE

sensor inductive, M5x0.5 25long, Quasi-flat, Sn: 2.5, 10-30V DC, PNP NO, Cable 2m PVC, IP67, Nickel silver



MECHANICAL FEATURES

	IV000197
Active area material of sensor	PPE
Ambient temperature	-25 °C ... 70 °C
Cable length	2 m
Degree of protection (IP)	IP67
Housing design	Cylinder, screw-thread
Housing material	Nickel silver
Material of cable sheath	PVC
Max. tightening torque	1.5 Nm
Mechanical mounting condition for sensor	Quasi-flat
Number of cores	3
Pressure-proof	-
Sensor length	25 mm
Thread length	20 mm
Thread pitch	0.5 mm
Thread size, metric	5
Wire cross section	0.14 mm ²

ELECTRICAL FEATURES

Cascadable	-
Correction factor (aluminum)	0.33
Correction factor (brass)	0.42
Correction factor (copper)	0.3
Correction factor (St37)	1
Correction factor (stainl. steel)	0.67
Hysteresis	8 %
No-load current	10 mA
Norm measuring plate	7.5x7.5x1
Rated switching current	200 mA
Readiness delay	30 ms
Relative repeat accuracy	1.2 %
Residual ripple	20 %
Reverse polarity protection	+

ELECTRICAL FEATURES

Short-circuit protection	+
Suitable for safety functions	-
Supply voltage	10 V ... 30 V
Switching distance	2.5 mm
Switching frequency	800 Hz
Type of electrical connection	Cable
Type of switching function	Normally open contact
Type of switching output	PNP
Voltage drop	2 V
Voltage type	DC
With LED display	+
With monitoring function of downstream devices	-

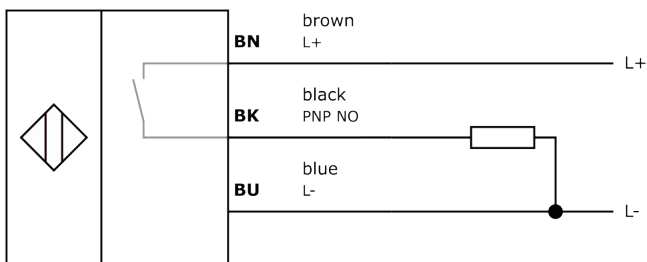
Other

Packaging dimensions	77.0mm x 25.0mm x 123.0mm
Shipping weight	0.05kg
Tariff code	85365019

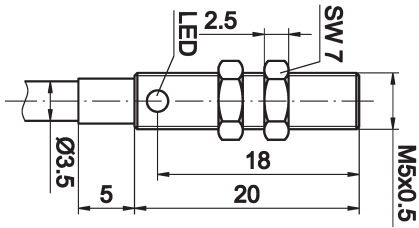
Classification

ipf product group	201
eClass 8.0	27270101
eClass 9.0	27270101
eClass 9.1	27270101
ETIM-5.0	EC002714
ETIM-6.0	EC002714
ETIM-7.0	EC002714

Connection



Dimensional drawing



Installation



Mounting / installation may only be carried out by a qualified electrician!

Disposal



Software

Any software, drivers or IODD files that may be required to operate your device can be downloaded free of charge from our homepage: www.ipf-electronic.com

Safety warnings

Before initial operation, please make sure to follow all safety instructions that may be provided in the product information.

Never use these devices in applications where the safety of a person depends on their functionality.

LED lighting systems can generate intensive UV radiation, which can damage your eyes in case of improper use. The manufacturer cannot be held responsible for damages that result from improper use or connection.