

## IB05017H

### INDUCTIVE SENSORS • INCREASED SWITCHING DISTANCE

sensor inductive, M5x0.5 38long, Quasi-flat, Sn: 2.5, 10-30V DC, PNP NO, Connector M8 3pin, IP67, Nickel silver



#### MECHANICAL FEATURES

	IV000197
Active area material of sensor	PPE
Ambient temperature	-25 °C ... 70 °C
Degree of protection (IP)	IP67
Housing design	Cylinder, screw-thread
Housing material	Nickel silver
Max. tightening torque	1.5 Nm
Mechanical mounting condition for sensor	Quasi-flat
Pressure-proof	-
Sensor length	38 mm
Thread length	20 mm
Thread pitch	0.5 mm
Thread size, metric	5

#### ELECTRICAL FEATURES

Cascadable	-
Correction factor (aluminum)	0.33
Correction factor (brass)	0.42
Correction factor (copper)	0.3
Correction factor (St37)	1
Correction factor (stainl. steel)	0.67
Hysteresis	8 %
No-load current	10 mA
Norm measuring plate	7.5x7.5x1
Number of pins	3
Rated switching current	200 mA
Readiness delay	30 ms
Relative repeat accuracy	1.2 %
Residual ripple	20 %
Reverse polarity protection	+
Short-circuit protection	+
Suitable for safety functions	-
Supply voltage	10 V ... 30 V

## ELECTRICAL FEATURES

Switching distance	2.5 mm
Switching frequency	800 Hz
Type of electrical connection	Connector M8
Type of switching function	Normally open contact
Type of switching output	PNP
Voltage drop	2 V
Voltage type	DC
With LED display	+
With monitoring function of downstream devices	-

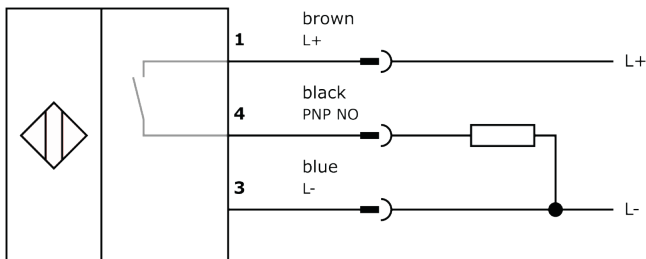
## Other

Packaging dimensions	100mm x 17.0mm x 120mm
Shipping weight	0.01kg
Tariff code	85365019

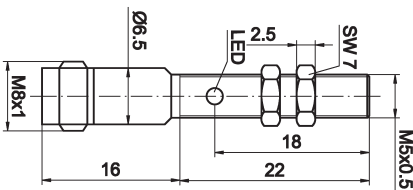
## Classification

ipf product group	201
eClass 8.0	27270101
eClass 9.0	27270101
eClass 9.1	27270101
ETIM-5.0	EC002714
ETIM-6.0	EC002714
ETIM-7.0	EC002714

## Connection



## Dimensional drawing



## Installation



Mounting / installation may only be carried out by a qualified electrician!

## Disposal



**Software**

**Any software, drivers or IODD files that may be required to operate your device can be downloaded free of charge from our homepage: [www.ipf-electronic.com](http://www.ipf-electronic.com)**

**Safety warnings**

Before initial operation, please make sure to follow all safety instructions that may be provided in the product information.

Never use these devices in applications where the safety of a person depends on their functionality.

LED lighting systems can generate intensive UV radiation, which can damage your eyes in case of improper use. The manufacturer cannot be held responsible for damages that result from improper use or connection.