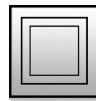
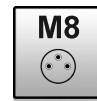


dimensions \varnothing 6.5
 switching distance semi-flush 3mm

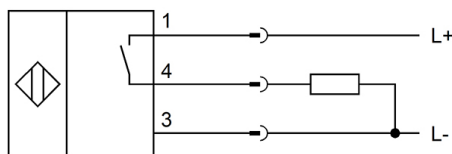


- ✓ semi-flush
- ✓ integrated amplifier
- ✓ short-circuit and reverse polarity protected
- ✓ M8-connector

**increased switching distance
stainless steel housing**

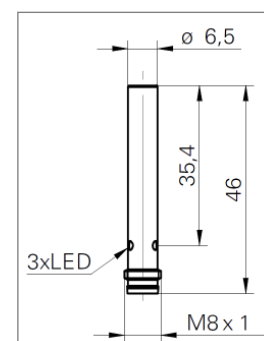

Technical Data
IB060186

nominal switching distance	3mm
mounting	semi-flush
operating voltage	6 ... 36V DC
current consumption (w/o load)	10mA
short-circuit protection	+
reverse polarity protection	+
output signal	PNP, NO
output current (max. loads)	100mA
voltage decay (max. load)	2.0V DC
switching hysteresis	3 ... 20%
LED-display	+
temperature drift	\pm 10%
response time	< 0.25ms
correction factors	steel: 1.0 stainless steel: 0.6 aluminum: 0.3
temperature (operating)	+25 ... +75°C
material (housing)	chromium-nickel steel
material (active surface)	PBT
length	46mm
protection class (EN 60529)	IP67
connection	M8-connector, 3-pin
connection accessories	e.g. VK200075
mounting accessories (quick clip)	AY000046

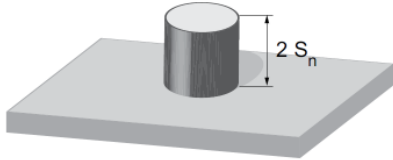
connection


wire colors:
 1 = BN (brown), 3 = BU (blue), 4 = BK (black)

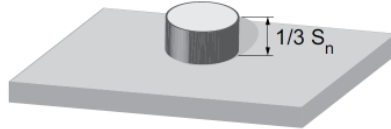
functions:
 1 = L+, 3 = L-, 4 = PNP NO

dimensional drawing


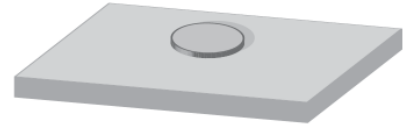
correction factors (guide values) when mounted in



steel:	1.0
stainless steel:	1.0
aluminum:	1.0

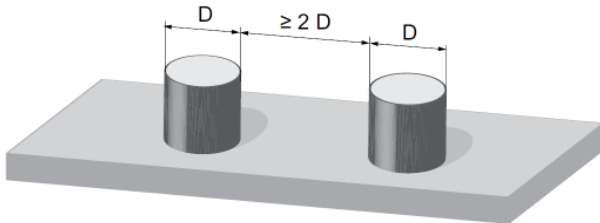


steel:	0.85
stainless steel:	0.65
aluminum:	0.55



steel:	0.90
stainless steel:	0.60
aluminum:	0.45

mounting arrangement



article-no.: **IB060186**

Warning: Never use these devices in applications where the safety of a person depends on their functionality.