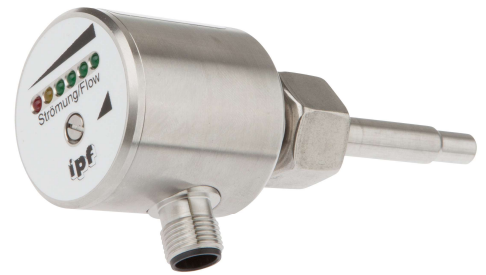


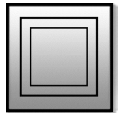
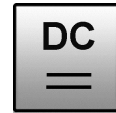
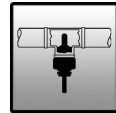
SS420120

fluid technology flow sensors

- / Robust Stainless steel housing
- / Plug-in installation
- / Easy configuration of the switching point



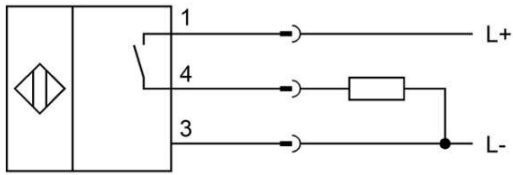
wear-free one-piece stainless steel probe



TECHNICAL DATA

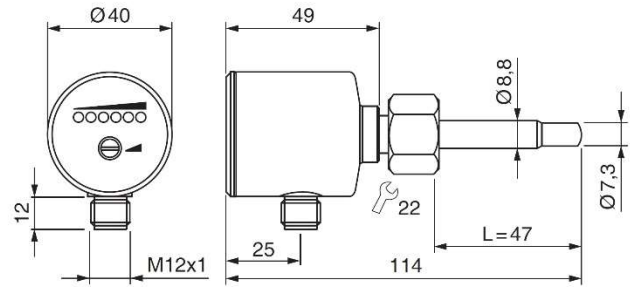
detection range (water)	1 ... 150cm/s
detection range (oil)	3 ... 300cm/s
operating voltage	24V DC \pm 20%
current consumption (w/o load)	\leq 70mA
switching output	pnp, no
output current (max. load)	400mA
display	LED array
flow setting	Potentiometer
short circuit protection	+
reverse polarity protection	+
start-up time (typ.)	8s (2 ... 15s)
reaction time (typ.)	2s (1 ... 13s)
compressive strength	100bar
temperature gradient	250K/min
ambient Temperature	-20 ... +80°C
medium temperature	-20 ... +80°C
dimensions	\varnothing 40 x 114mm
thread fixing nut	M18x1,5
material (housing)	stainless steel 1.4404 (AISI 316 L)
material (sensing element)	stainless steel 1.4571 (AISI 316Ti)
material (O-Ring)	FPM
degree of protection (EN 60529)	IP67
connection	M12-connector
connection accessories	z.B. VK200025
mounting accessories (adapter)	AS000012, AS000013, AS000014

Connection

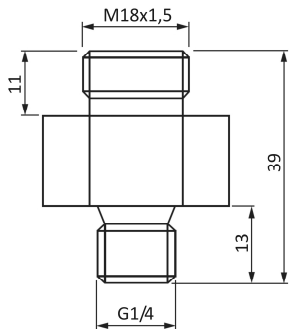


Colors: 1 = BN (brown), 4 = BK (black), 3 = BU (blue)
Functions: 1 = L+, 4 = PNP NO, 3 = L-

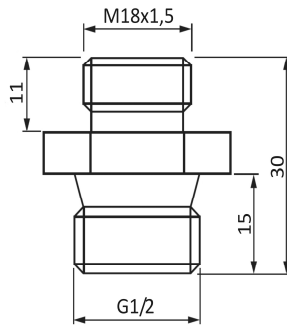
Dimensional drawing



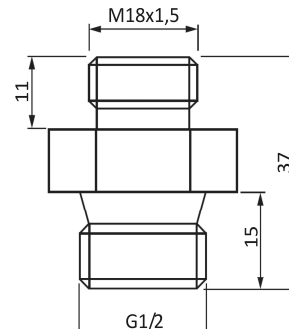
Accessories (adapter)



AS000012



AS000013



AS000014

SAFETY WARNINGS:

Before initial operation, please make sure to follow all safety instructions that may be provided in the product information!
 Never use these articles in applications where the safety of a person depends on their functionality.