

ImpressArt®: How to Metal Stamp Mandala Patterns

This week's tutorial from ImpressArt is a popular trend in Mandala metal stamping. A mandala design is a circular shape with geometric patterns.



Here is what you'll need to start your mandala designs:

- **Mandala Design Stamp Pack:** These packs comes with a set of 4 stamps. Combine these stamps endlessly to create intricate jewelry designs. Easily stamp beautiful on-trend mandalas, frames, accents, or borders. Here are 4 sets we have: Z018002, Z018004, Z009934, Z009935.
- **Stamp Enamel:** An acrylic ink used to darken stamped

impressions so your design will be clearly seen. We have this enamel pen in Black, Green, Gold & Brown.

- **Sticker Book Stamp Guides (Z021582):** Stamp Guides makes it easy to space out letters, stamp in a straight line or curve, and stamp Mandalas and other intricate patterns
- **1" Circle w/ Hole (A019450)**

Mandala Necklace Tutorial

Make a DIY necklace with your mandala stamped design!

Mandala Necklace Tutorial

Step 1

Center the pattern grid over the circle stamping blank to secure it to the stamping block.



Step 2

Start mandala pattern from the center using the lines and circles marks as guides to assist with spacing. Hold stamps flat and firmly in place by anchoring the side of your hand on workspace. Strike design stamps once with medium force using the Metal Stamping Hammer.

Tip: if the stamp has an ImpressArt logo, make sure it is facing you so that the impression is stamped in the correct direction.

Tip - Tilt & Tap: Use the Tilt & Tap technique to stamp 6mm and larger stamps, or stamps with more details. While applying pressure to the stamp, strike once with medium force. Then without lifting stamp, continue to strike while very slightly tilting the stamp in a circular motion to catch all sides of the design.



Step 3

Continue stamping to the outside edge of the blank, turning the stamping block while working to complete the circular pattern. This will ensure that the stamp is facing the correct direction. Remove pattern grid.

Optional - Dapping: Place blank, impression side up, inside dapping cavity of dapping block. Hold punch in center of blank and tap the punch with the Metal Stamping Hammer. Continue to tap punch with the Metal Stamping Hammer. Continue to tap punch while rotating punch in a circular motion until blank is evenly domed into a concave shape.



Step 4

Highlight impressions with Stamp Enamel. Wait 3-5 minutes and then wipe away the excess enamel from the surface of the blanks.

Step 5

Use the tips of the two chain nose pliers to grasp the sides of a jump ring, with the opening of the jump ring facing up between the two pliers. Laterally twist each side of the jump ring in opposite directions to open the ring. Slide blank onto jump ring. Then drape chain over the opened ring. Laterally twist the jump ring back with tension to close.

Note: Do NOT pull outwards on the jump ring as it will weaken the metal and distort the circular shape of the ring.



Check out our other Mandala tutorial!

ImpressArt®: How to Use the Dapping Tool

This week's tutorial from ImpressArt is a simple tutorial on dapping. Turn flat ImpressArt stamping blanks into beautifully domed pieces of jewelry!

Dapping Tools



Dapping Block Set
TL00351

ImpressArt®

Here is what you'll need to start dapping:

- **Dapping Block Set (TL00351):** This tool is what you will

need to create the curved/domed shape.

- **Round Metal Blanks**

Dapping Tutorial

Tutorial also uses the texturing skill used in last week's ImpressArt Tutorial.

Dapped Earrings Tutorial

Step 1

Place texture stamp of your choice in the Multi-Function Hammer, with the notch in the stamp facing down (when notch is available). Secure stamp in hammer by tightening the screw at the bottom of the hammer.



Step 2

Set circle blank on stamping block. Hold the hammer with your palm of your hand over the screw and use one finger, off to the side, to hold the blank in place. Then stamp the blank repeatedly with medium force until the entire blank is textured. Repeat on remaining blank.

Tip: Use stamp tape to secure the blank to the stamping block so it doesn't move while texturing. You will be able to texture the blank through the tape.

Tip: Make sure you don't over texture the hold in the blank.

Step 3

Place blank, texture side up, inside dapping cavity on dapping block. Hold punch in the center of blank and tap the punch with the Metal Stamping Hammer. Then continue to tap the punch while rotating the punch at an angle in the dapping cavity until blank is evenly domed into a concave shape. Repeat on remaining blank.



Step 4

Use chain nose pliers to open ear wire by slightly pulling out the ear wire ball. Slide blank, textured side first, onto the back of the ear wire. Swivel the blank around so it clears the bend and sits in the bottom curve of the wire. Use chain nose pliers to gently push the ball back in to secure the blank to the ear wire.



ImpressArt®

GoodyBeads.com

ImpressArt®: How to Use the Texture Stamping Hammer

This week's tutorial from ImpressArt is all about metal stamp texturing. Texturing adds an extra dimension of design to your metal blanks. It also adds an organic look for your metal stamping needs. Here are some product you may need to get you started on texturing:



- Texture Stamper Hammer (TL00266): This innovative tool creates unique, one of a kind textures using your metal stamps as texture heads. You can also interchange the stamping head with this hammer.

- Ball Pen Texture Stamper Head (TL00313): This hammer head creates an organic, hammered texture look to your metal blanks. It is to be used with the Stamper Hammer.

Texture Bracelet Tutorial

Using last week's tutorial on Bracelet Bending, texturize the bracelet blank first before bending the blanks to create a bracelet.

Texture Bracelet Tutorial

Step 1

Place texture stamp of your choice in the Multi-Function Hammer, with the notch in the stamp facing down (when notch is available). Secure stamp in hammer by tightening the screw at the bottom of the hammer.



Step 2

Place bracelet blank on stamping block. Hold the hammer with the palm of your hand over the screw. Then while holding the bracelet in place, stamp the blank repeatedly with medium force until the entire blank is textured.

Tip: Use stamp tape to secure the blank to the stamping block so it doesn't move while texturing.



Step 3

Use the Bracelet Bending Bar to bend the blank into a cuff shape. Place one end of blank into the channel with the texture side facing up. Firmly place your thumb against the end of the bracelet to secure it in place. Using the palm of your hand, bend the bracelet halfway around the bar until it forms a 90-degree angle. Repeat on the other side to finish shaping the bracelet.



Step 4

Continue to round out the cuff with the Bracelet Bending Pliers. Match the curvature of the pliers to the curvature of the bracelet. Then begin in the center of the bracelet and squeeze down. Work towards each end to give bracelet a rounded finish.



Impress Art®: How Make a Metal Bracelet with the Bracelet Bending Bar Kit

This week's tutorial from ImpressArt is a simple tutorial on bracelet bending. See how easy it is to make a bracelet by using the bracelet bending tool.



Here are some tool you'll need:

- **Bracelet Guides** (Z021583) – This will help to keep your lettering straight when writing names or a simple phrase.
- **Bracelet Bending Pliers** (TL00350) – This tool will give you the curve your bracelet will need to obtain a curved shape.
- **Bracelet Bending Bar Kit** (TL00352) – This tool is very

useful in bending the ends of your bar. Plus, this kit includes (4) 1/4 inch and (4) 3/8 inch Aluminum Bracelet Blanks.

- Other Tools: **Letters Stamping Set, Enamel Marker, Hammer & Steel Block.**

Bracelet Bending Tutorial

Bracelet Bending Tutorial

Step 1

Rotate stamping block so it's positioned in a diamond shape. Place bracelet blank horizontally on stamping block. Secure bracelet stamp guide in the center of the bracelet blank. Use the guide marks to evenly space out letters and align stamp impressions.

Tip: Use stamp tape to secure the blank to the stamping block so it doesn't move while stamping.

Tip: Write desired message directly onto the stamp guide and utilize the guideline marks for spacing.

Tip: For 1/4" bracelets, make sure the top thin blue horizontal line that runs through the guide marks matches up with the bottom edge of the bracelet blank. For 3/8" bracelets, match up the middle, blue side mark on the guide with the bottom edge of the bracelet blank. For 5/8" bracelets, match up the bottom, blue side mark on the guide with the bottom edge of the bracelet blank.



Step 2

Place stamp on bracelet blank. Lightly drag stamp towards the guide until the stamp catches the edge of the guide. Hold stamp flat and firmly in place by anchoring the side of the hand on workspace. Then strike stamp once with medium force using Metal Stamping Hammer. Repeat to complete desired word. Remove stamp guide.

Tip: If the stamp has an ImpressArt logo, make sure it is facing you so that the impression is stamped in the correct direction.

Tip: Slightly tilt the stamp towards you while dragging the stamp towards the guide. Make sure you hold the stamp flat and firmly in place before striking the stamp.

Step 3

Highlight impressions with Stamp Enamel. Wait 3-5 minutes and then wipe away the excess enamel from the surface of the bracelet.



Step 4

Use the Bracelet Bending bar to bend the blank into a cuff shape. Place one end of blank into the channel with the stamped side facing up. Firmly place your thumb against the end of the bracelet to secure it in place. Using the palm of your hand, bend the bracelet half way around the bar until it forms a 90-degree angle. Repeat on the other side to finish shaping a bracelet.



Step 5

Continue to round out the cuff with Bracelet Bending Pliers. Match the curvature of the pliers to the curvature of the bracelet. Then begin in the center of the bracelet and squeeze down. Work towards each end to give bracelet a rounded finish.

Impress Art®: Stamping Essentials

Our friends at ImpressArt have given us a 5 week roll-out of educational tool knowledge, tips and tutorials. ImpressArt has a whole inventory of tools, guides and metal blanks for metal stamping. Metal stamping is a great tool and skill to use to customize and personalize jewelry and crafts with impressed words and designs. (Note: Though, many of these metal stamping tools are great for imprinting on metal, you can use them for stamping leather too.)

Essential Tools

To get started on customizing with metal stamping, we are starting with stamping essential this week.

Essential Tools



Bridgette
Uppercase, Lowercase & Numbers

A B C	a b c	0 1 2
D E F	d e f	3 4 5

TL00123 TL00124 TL00193

Black Enamel Stamp Marker
Z002602

Sticker Book
Z021582

Steel Block
A011605

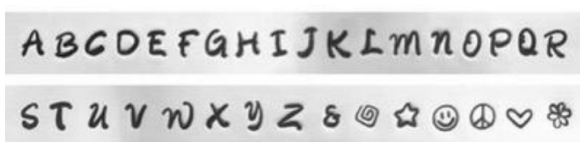
Ergo Angle Hammer
TL00235

Stamp Straight Tape
A010618

ImpressArt®

These tools are what you will need to help you start metal stamping:

- **Metal Letter Stamping Sets** – Great for personalizing jewelry and craft components. Many of these sets will have an Uppercase and Lowercase set, as well as a number set. Plus, there are different font styles you can get. (Item in image is Bridgette Set: TL00123, TL00124, TL00193)



(An example of the stamps you will get with your letter set.)

- **Steel Block** (A011605/A014415) : This a hard, stable block that you'll need to place your stamping blanks to stamp on. This will assist you in giving you a solid impression when you stamp.
- **Ergo Angle Hammer** (TL00235): ImpressArt's Ergo-Angle handle provides ideal positioning for clean, even impressions and it's one pound head provides optimal weight for deep crisp impressions. It's short handle design features multiple holding options for maximum control and comfort.
- **Stamping Tape** (A010618): A straight guide that allows precise accuracy when stamping letters on metal.
- **Sticker Guide** (Z021582): Stamp Guides makes it easy to space out letters, stamp in a straight line or curve, and stamp Mandalas and other intricate patterns.
- **Enamel Stamp Marker** (Z002602): Stamp Enamel Marker is an acrylic ink used to darken stamped impressions so your design will be clearly seen. Convenient applicator marker makes highlighting impressions quicker, easier and cleaner.
- **Optional Polishing Cloth** (A002371) : Use the polishing cloth to help wipe off excess enamel.

DIY Key Chain Tutorial

Here is a simple DIY Key Chain Tutorial using these essential tools and guides.

DIY Key Chain Tutorial

Step 1

Place rectangular prism on stamping block. Position stamp of your choice on the prism. Hold stamp flat and firmly in place by anchoring the side of your hand on workspace. Then strike the stamp once with medium force using Metal Stamping Hammer. Repeat to complete desired word. Stamp each side of the prism as desired.

Tip: If the stamp has an ImpressArt logo, make sure it is facing you so that the impression is stamped in the correct direction.

Tip: Hold stamp towards the bottom of the stamp shank. Use your fingers at the bottom of shank to pinch the top of the prism and hold it in place so it doesn't move while stamping.

Tip: Use a piece of stamp tape to secure the prism to the stamping block so it doesn't move while stamping. You will be able to stamp through the tape into the cube.



Step 2

Highlight impressions with Stamp Enamel. Wait 3-5 minutes and then wipe away the excess enamel from the surface of the prism.

Step 3

To create a necklace, slide the ball chain through rectangular prism and clasp chain. To create a keychain, attach a split key ring to rectangular prism.



GoodyBeads[™]
.com

ImpressArt[®]

Here are items suggested in tutorial: Z014563, MCKR0002, TC02063, TL00123

ImpressArt Texture Stamper Hammer – Video Tutorial

Add texture to your metal stamping jewelry with this Texture Stamper Hammer from ImpressArt. Watch this vendor video and see how simple you can add dimension to your designs!

A perk to ordering the Texture Stamper Hammer (TL00266) is that it comes with the Sprinkle Design Stamp, so you can start using this tool right away when you get it. Plus, with the twist of the handle knob, you can easily switch out different stamps for different designs! The Texture Stamper Hammer is the perfect tool for all skill levels. So start stamping right away!

Hammer Video Tutorial

Hammer Tool: TL00266