

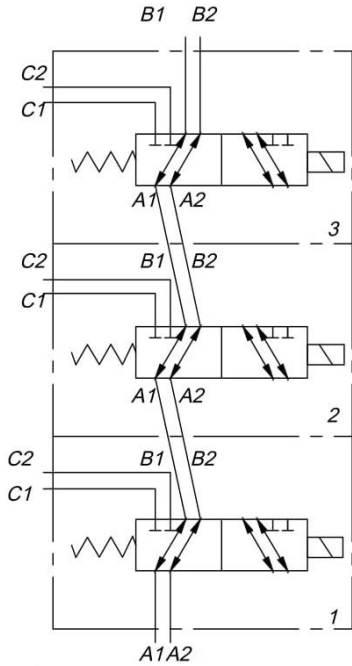
DIVERTER VALVES

T08-1-0002 - 6/2 SOLENOID SELECTOR VALVE 90 L/MIN 12VDC

Nominal Flow	90 lpm
Number of Spools	1
Maximum Working Pressure	280 bar
A1,A2,B1,B2,C1,C2 Threads	1/2" BSP
Supply Voltage	12 VDC
Power	65 W
Switching Frequency	15000 1/h
Duty Cycle	100½
Recommended Oil Viscosity Range	15-400 mm ² / s
Coil Temperature	Up to 180 C
Recommended Fluid Temperature Range	-20 to +70 C
Environmental Temperature	-40 to +95 C
Maximum Contamination Level	18/14 acc. to (ISO 4406)

DIVERTER VALVES

T08-1-0002 - 6/2 SOLENOID SELECTOR VALVE 90 L/MIN 12VDC



for stacking 1-3units

