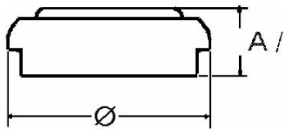


**Type Number**..... 4626  
**Designation IEC**..... LR9  
**System**..... Manganese Dioxide/  
 Zinc/KOH-Electrolyte



**Nominal Voltage**..... 1.5V  
**Typical Capacity C**..... 150 mAh



**Temperature Ranges**                      min                      max.  
**Storage**..... -10°C                      65°C  
**Discharge**..... -10°C                      65°C

**Dimensions**                                      min                      max.  
**Diameter**..... 15,20                      16,00  
**Height (A/B)**..... 5,60                      6,20

**Typical Capacities (at 20°C)**

<b>Discharge Type</b>	<b>Load</b>	<b>End Voltage:</b>	<b>0.9V</b>
Continuous 24h/d, 7d/w	390 Ω	Time: Capacity:	43 h 150 mAh

All Data contained herein is for single cells  
 For battery applications, performance data may vary from single cell data, depending on specific battery configuration

**No publication or circulation of data to third parties without consent of VARTA Consumer Batteries**