

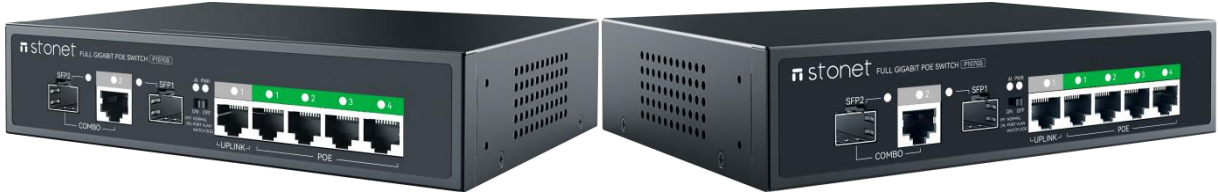
4GE POE+1GE Uplink+1SFP +(1GE+1SFP)COMBO Switch

P107GS



OVERVIEW:

Stonet P107GS Provides 4 10/100/1000MPOE ports + 1 gigabit uplink port +1 SFP + 1 photoelectric multiplexing port; Ports 1 to 4 support standard POE power supply, and the ports can automatically detect and identify the power device that conforms to the IEEE 802.3AT/AF standard and supply power to it through the network cable, which can be used as an Ethernet power supply device. Supporting normal / AI detection & port isolation (combined function) two mode.



FEATURES:

- Follow IEEE 802.3 Ethernet and IEEE802.3u Fast Ethernet Protocol
- POE IEEE 802.3af/at compliant Powered Device (PD)
- Supporting normal / AI detection & port isolation (combined function) two mode
- 4 10/100/1000M adaptive RJ45 ports,2 1000M adaptive RJ45 UPLink ports,2 SFP Gigabit ports,including SFP2 and LAN2 (gigabit RJ45 +SFP) as the photoelectric multiplexing interfaces
- Auto MDI/MDIX crossover for all ports
- Support full duplex based on IEEE802.3x and half duplex based on Backpressure
- All ports have wire-speed forwarding capability
- MAC address auto-learning & auto-aging
- Power supply: built-in 65W

**KEDACOM Bilişim A.Ş. ürünlerinden
haberdar olmak için bizi takip edin!**

0212 220 55 50

www.kedacom.com.tr

info@kedacom.com.tr

[kedacombilisim](#)

[kedacombilisim](#)

[kedacomturkiye](#)

SPECIFICATION:

Hardware	
Interface	4*1000Mbps POE RJ45 ports 1*Gigabit cascaded RJ45 port 1*Gigabit SFP port and 1 gigabit RJ45+SFP photoelectric multiplexing port
LED	PWR - Lighting:The product is powered on Function indication - Lighting:The function switch is on and AI&VLAN is enabled Port lights - Lighting:Port link is normal,Blinking: Data in transit
Backplane bandwidth	16G
MAC Address Table Size	2K
Cabling type	1000Base-T: 4 pairs of Cat5e or above UTP/STP(≤100m) 100Base-TX: 2 pairs of class 5 (Cat5) or more UTP/STP(≤100m) 10Base-TX: 2 pairs of class 5 (Cat6) or above UTP/STP(≤250m)
Power supply	AC input 100-240V, standard 65W power supply
Software	
Basic function	Follow IEEE 802.3 Ethernet and IEEE802.3u Fast Ethernet Protocol Support POE IEEE 802. 3af/at compliant Powered Device (PD) Store-and-forward switching scheme Compatible with certified non-standard electrified equipment (PD) Support IEEE802.3X full duplex and Backpressure half duplex MAC address auto-learning & auto-aging
Standards	IEEE 802.3 10BASE-T Ethernet IEEE 802.3i 10BASE-T Ethernet IEEE 802.3u 100BASE-TX Fast Ethernet IEEE 802.3ab 1000BASE-T Gigabit Ethernet IEEE 802.3af/at, Power over Ethernet IEEE 802.3x Flow Control
Mode	Normal (default mode) AI (AI&VLAN mode)
Data Transfer Rate	10Mbps(Half-duplex and Full-duplex) 100Mbps(Half-duplex and Full-duplex) 1000Mbps(Full-duplex)

Others

Environment	Operation Temperature: 0°C ~ 40°C Storage Temperature: -40°C ~ 70°C Operation Humidity: 10% ~ 90% RH Non-condensing Storage Humidity: 5% ~ 90% RH Non-condensing
Dimensions	190*140*43mm(L x W x H)