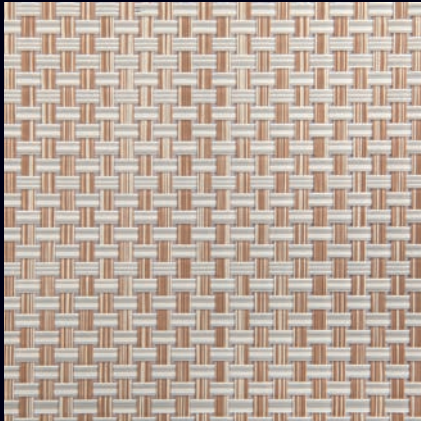
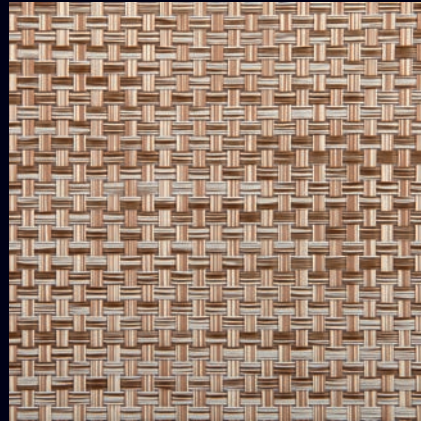


Woven FloorMats

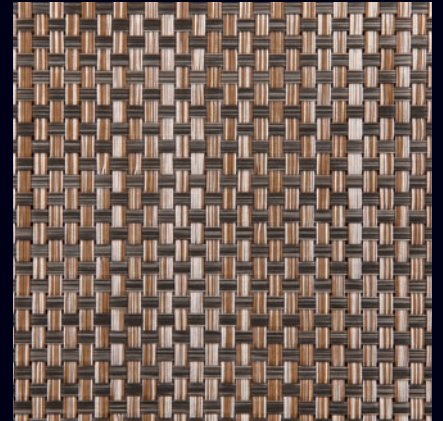
by *dinnerdesign*[®]



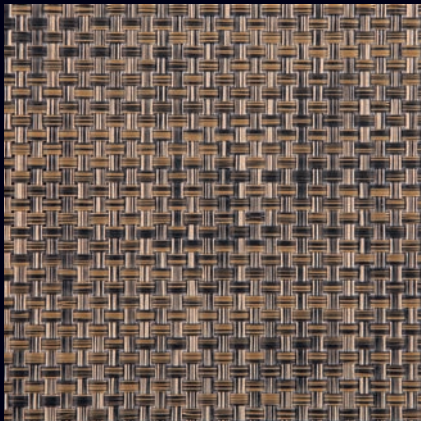
BEIGE



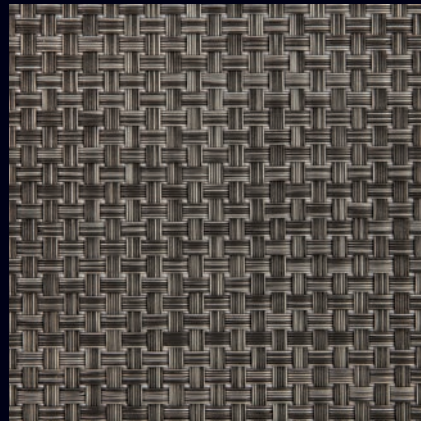
ALDER



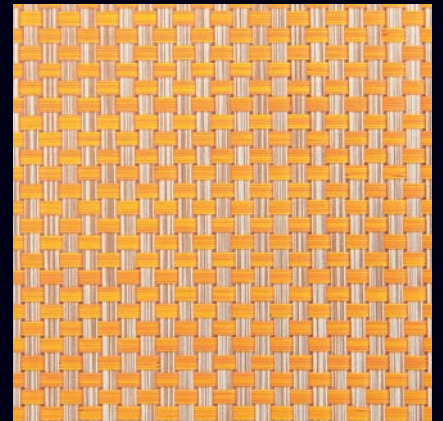
TAUPE



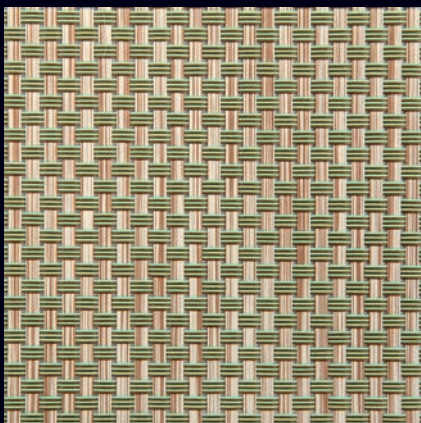
ESPRESSO



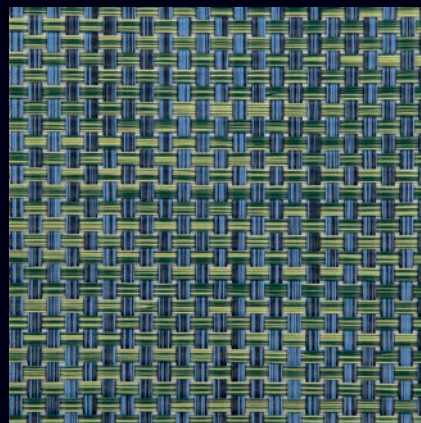
IRON



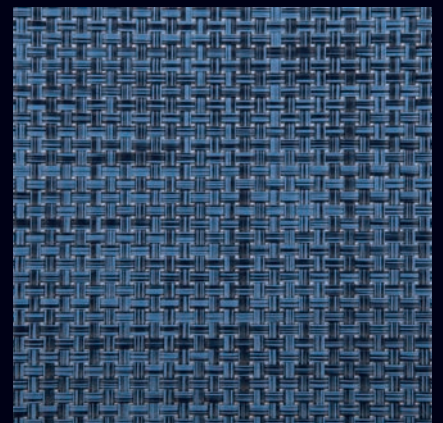
SAFRAN



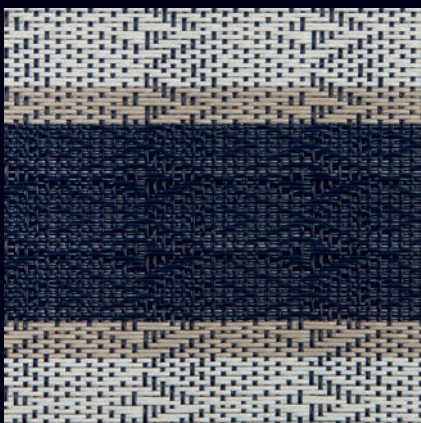
BAMBOO



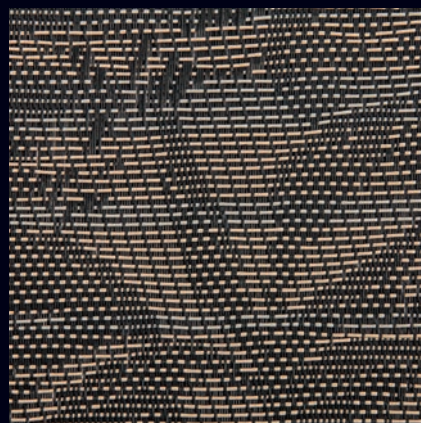
FOREST



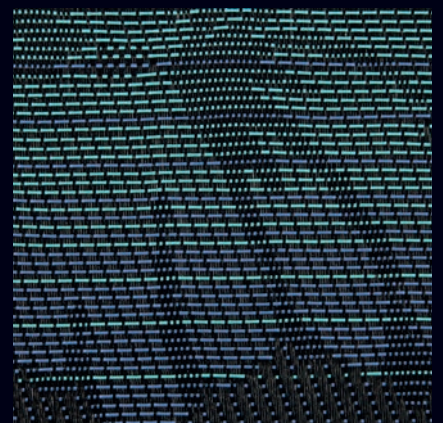
OCEAN



HERA



ETNA



HAVANA

TRUSTED CHOICE

- dinnerdesign® Woven FloorMats are produced with self-bound edge, made by folding the face fabric over the edge of the mat and sewing to provide a clean, finished edge.
- All our floor mats have a non-slip special backing system.
- Durable and very easy to clean.
- Feature integrated Microban® antimicrobial protection that lasts for the lifetime of the product.
- Microban® protection is built-in during the manufacturing process and will not wash off or wear away.

PROTECTION THAT LIVES ON
MICROBAN®

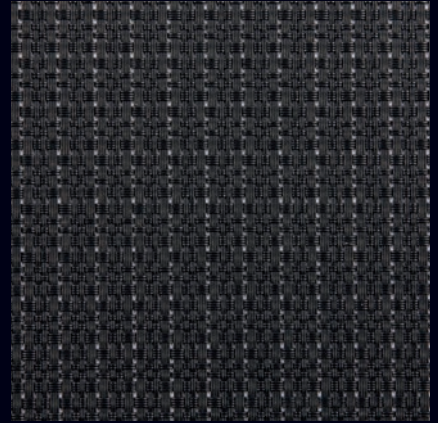




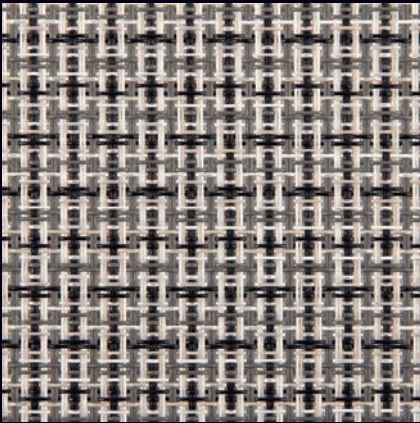
BROWN



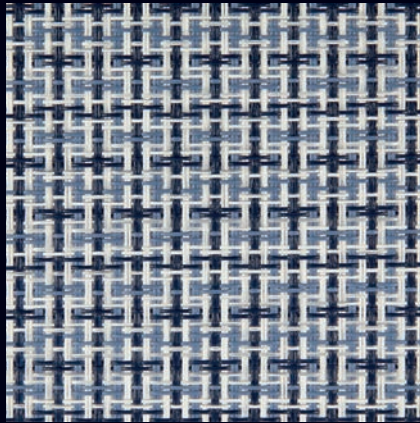
CAROB



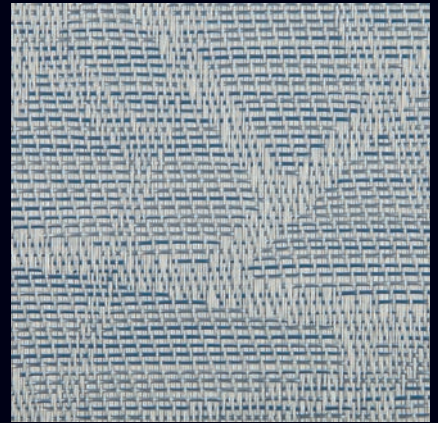
CARBON



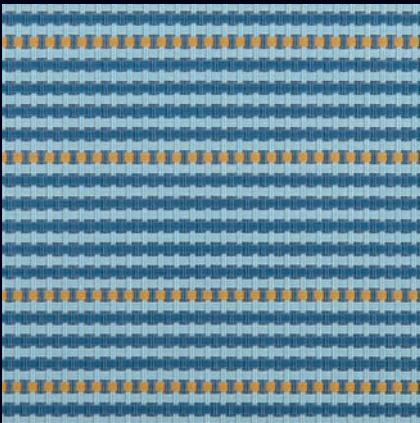
THUNDER



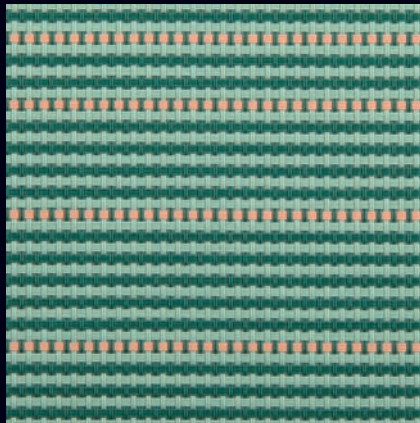
WHALE



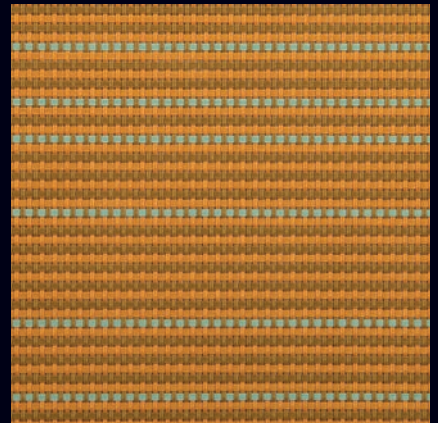
BABYBLUE



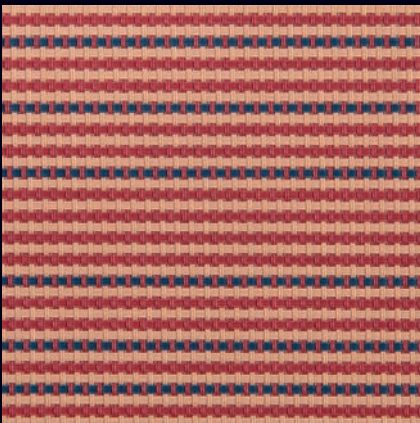
COBALT



CLOVER



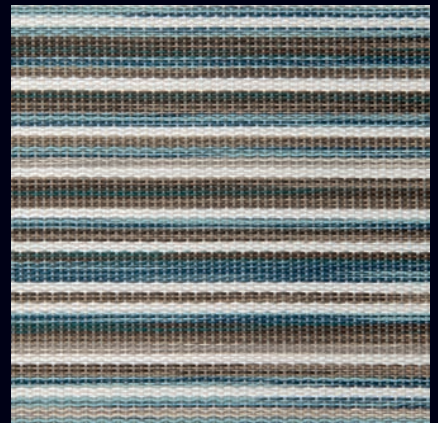
TURMERIC



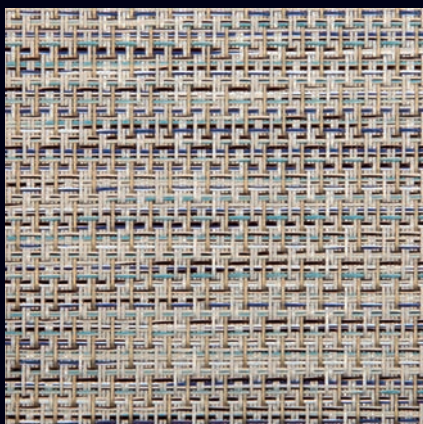
BRICK



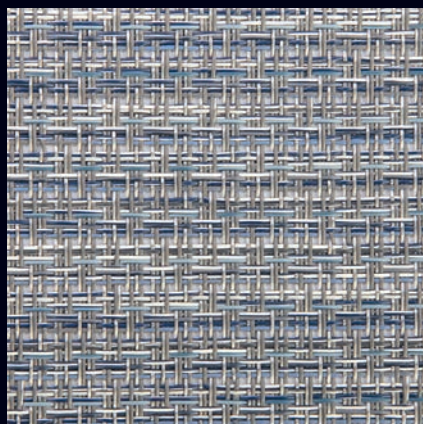
JUNGLE



WILLOW



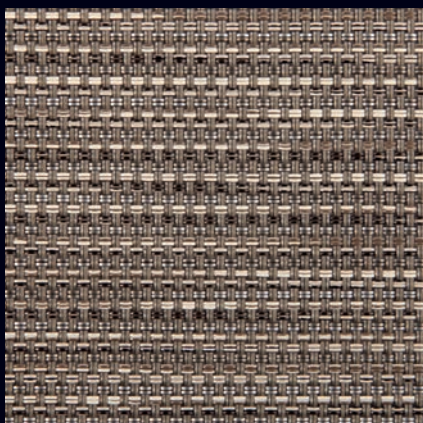
POWDER



SPACE



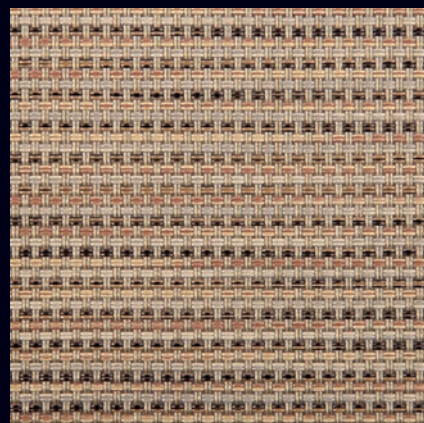
CINNAMON



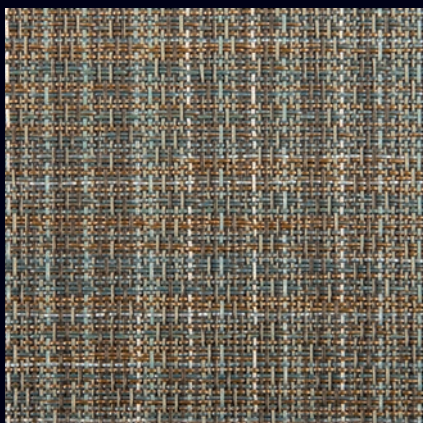
TAWNY



CEDAR



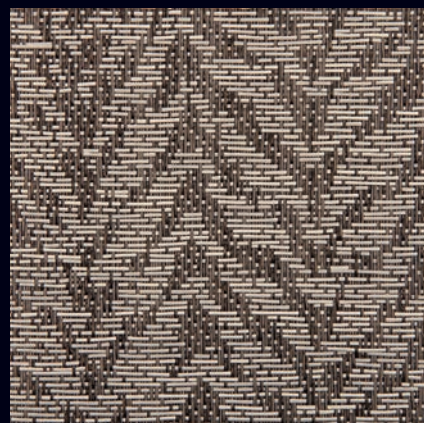
WOOD



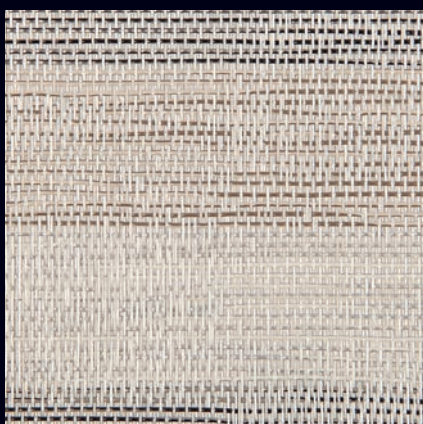
OLIVE



CLAY



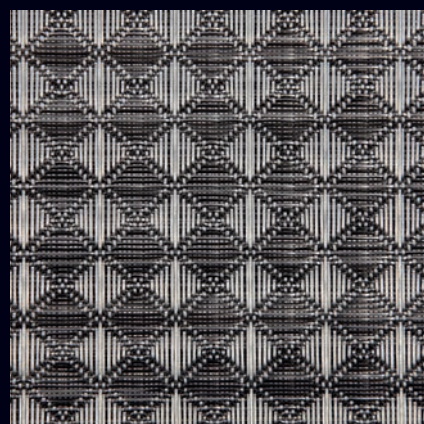
SEPIA



RHINO



DOLPHIN



ZINC



SHAPES & SIZES

	60x90 cm
	90x150 cm
	120x180 cm
	130x200 cm
	150x250 cm
	180x300 cm
	60x250 cm
	80x300 cm
	90 cm
	130 cm
	170 cm

Material: Woven vinyl fabric + specially formulated vinyl cushion backing

Thickness: 0,40 cm - 0,48 cm

Woven in USA & Spain
Designed in Turkey



Vacuum or
Mop Clean



Spray Cleaner
For Stains



Scrub with Soft Brush



Wipe with Damp and
Lint-free Cloth



Air Dry



Laundry
Instruction



Fade
Resistant



Stain
Resistant



Flame
Retardant



T: +90 312 394 34 77
F: +90 312 394 35 77

www.dinnerdesign.com.tr
info@dinnerdesign.com.tr
[@dinnerdesignofficial](https://www.instagram.com/dinnerdesignofficial)