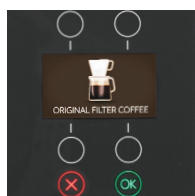


ComBi-line machines can quickly brew large quantities of fresh filter coffee. A ComBi-line set-up consists of a brewing unit with either one or two containers (5, 10 or 20 litre). The user-friendly ComBi-line can be placed on a buffet or counter, or used in combination with a serving trolley. The ComBi-line is available with (W models) or without hot water dispenser in the brewing unit.



reddot award 2018  
winner

## BENEFITS



### CAPACITIVE TOUCH USER INTERFACE

- + Coffee dosing advice
- + Easy operator and service menu
- + Programmable timers
- + Day and total counters



CB 1X .. L



CB 1X .. R



CB 2X ..



CB 1X ..W L



CB 1X .. W R



### HOT WATER DISPENSER

- + W models have a hot water dispenser in the brewing unit
- + Energy Saving Mode
- + High capacity of hot water



- + Synthetic filter holders
- + Light in weight
- + Heat insulated
- + Easy to handle



- + On-screen brewing process
- + Easy on-screen instructions
- + Display your private label



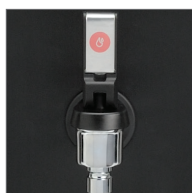
- + Raised base plate. Easy when using large thermos jugs.

## OPTIONS



### CNE CONTAINERS

- + LED lighting in container
- + No-drip tap
- + Insulated lid to keep perfect temperature
- + Transportable and stackable
- + Improved container heating



- + Tap for different labels; coffee, tea or hot water



- + Container tube with tap
- + S-swivelarm
- + Clip on lid
- + Tap protection
- + Wall brackets



- + For making tea in a container, place the special tea filter with filler pipe.

MODEL	5 Ltr.	10 Ltr.	20 Ltr.
Article number 2 x 5/10/20	1005390	1005398	1005406
Article number 1 x 5/10/20 L	1005392	1005400	1005408
Article number 1 x 5/10/20 R	1005391	1005399	1005407

CAPACITY COFFEE SYSTEM			
Brew time (water dosing time)	approx. 10 min./5Ltr.	approx. 10 min./10 Ltr.	approx. 14 min./ 20 Ltr.
Hour capacity (water volume)	30 Ltr.	60 Ltr.	90 Ltr.
Buffer stock 2 x 5/10/20	10 Ltr.	20 Ltr.	40 Ltr.
Buffer stock 1 x 5/10/20 L/R	5 Ltr.	10 Ltr.	20 Ltr.
Filter paper	Ø101/317	Ø152/457	Ø203/533

ELECTRICAL SYSTEM			
Electrical connection	1N~220-240V/ 50-60C <sub>y</sub> /3175W	3N~ 380-415V/ 50-60C <sub>y</sub> /6275W	3N~380-415V/ 50-60C <sub>y</sub> /9275W

MODEL	5 Ltr. / Hot water	10 Ltr. / Hot water	20 Ltr. / Hot water
Article number 2 x 5/10/20 W	1005394	1005402	1005410
Article number 1 x 5/10/20 W L	1005396	1005404	1005412
Article number 1 x 5/10/20 W R	1005395	1005403	1005411

CAPACITY COFFEE SYSTEM			
Brew time (water dosing time)	approx. 10 min./5 Ltr.	approx. 10 min./10 Ltr.	approx. 14 min./ 20 Ltr.
Hour capacity (water volume)	30 Ltr.	60 Ltr.	90 Ltr.
Buffer stock 2 x 5/10/20 W	10 Ltr.	20 Ltr.	40 Ltr.
Buffer stock 1 x 5/10/20 W L/R	5 Ltr.	10 Ltr.	20 Ltr.
Filter paper	Ø101/317	Ø152/457	Ø203/533

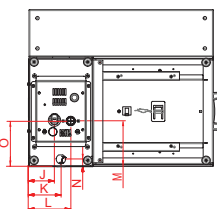
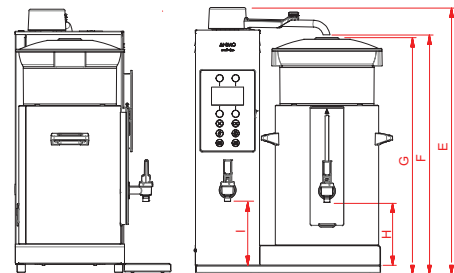
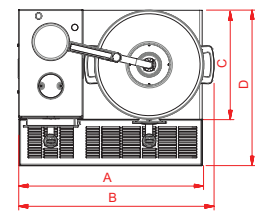
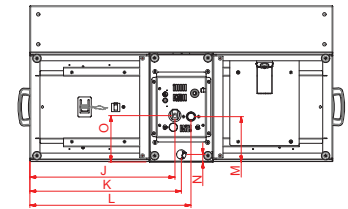
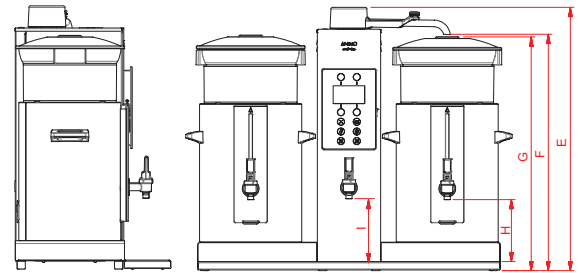
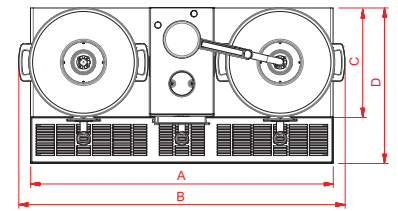
CAPACITY HOT WATER SYSTEM			
Boiler content	approx. 4.2 Ltr.	approx. 5.6 Ltr.	approx. 5.6 Ltr.
Buffer stock hot water	approx. 2.6 Ltr.	approx. 4.1 Ltr.	approx. 4.1 Ltr.
Hour capacity (hot water)	approx. 33 Ltr./hour	approx. 60 Ltr./hour	approx. 60 Ltr./hour
Heat up time (15-96°)	approx. 9 min.	approx. 9 min.	approx. 9 min.
Recovery time after max. drain	approx. 6 min.	approx. 6 min.	approx. 6 min.

ELECTRICAL SYSTEM			
Electrical connection	1N~220-240V/ 50-60C <sub>y</sub> /3475W	3N~ 380-415V/ 50-60C <sub>y</sub> /6275W	3N~380-415V/ 50-60C <sub>y</sub> /9275W

CONTAINER	CN5e	CN10e	CN20e
Contents	5 Ltr.	10 Ltr.	20 Ltr.
Electrical connection	1N~ 220-240V/ 50-60C <sub>y</sub> /50W	1N~ 220-240V/ 50-60C <sub>y</sub> /100W	1N~ 220-240V/ 50-60C <sub>y</sub> /100W

## DIMENSIONS

	CB 1x5 L	CB 1x10 L	CB 1x20 L	CB 1x5 R	CB 1x10 R	CB 1x20 R	CB 2x5	CB 2x10	CB 2x20
A =	480	549	603	480	549	603	769	908	1016
B =	505	590	645	505	590	645	815	980	1095
C =	327	327	360	327	327	360	327	327	360
D =	470	470	500	470	470	500	470	470	500
E =	700	790	895	700	790	895	700	790	895
F =	616	707	809	616	707	809	616	707	809
G =	611	702	804	611	702	804	611	702	804
H =	185	185	185	185	185	185	185	185	185
I =	185	185	290	185	185	290	185	185	290
J =	365	435	490	77	77	77	365	435	490
K =	384	454	508	96	96	96	384	454	508
L =	414	484	538	125	125	125	414	484	538
M =	137	137	168	137	137	168	137	137	138
N =	23	23	55	23	23	55	23	23	55
O =	140	140	140	140	140	171	140	140	171



**SAFETY FIRST**  
+ CB Certification (TÜV)