



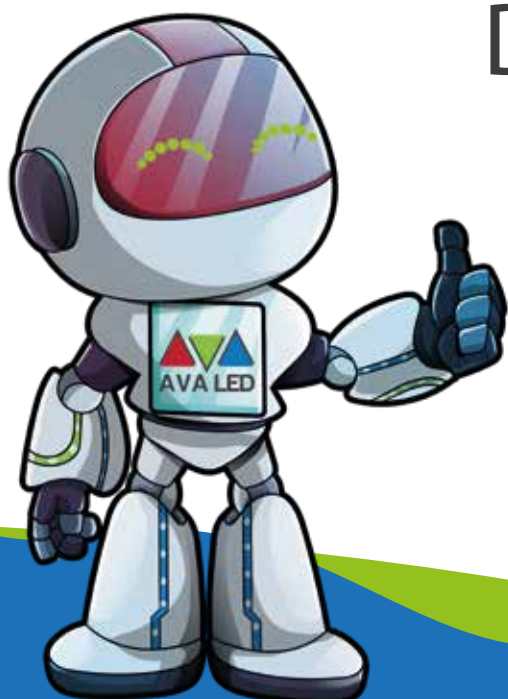
# AVA LED

## TK-PRO-IP-1

### P1,86 Data Sheet

INDOOR FRONT SERVICE  
POSTER SERIES

TK-PRO-IP-1 "P1,86"



QUALITY IN DETAIL



02-04	○ Features
05	○ Technical Specification
06 - 08	○ Cabinet Size - Photo
09 - 10	○ Safety - Instalation
11 - 12	○ Vision
13	○ Company Info

Magnesium Die Casting Cabinet

Cabinet Size: 640x1920x70mm

Videowall Systems, Easy and Fast

Installation " Magnetic Cabinet Systems "

Front Seriveces

USB Input " Plug and Play "

HDMI Input " Plug and Play "

CAT 5 input

Wifi Commution " optional "

Lan Control with internet

4G Control " optional "

Smart Systems " IOS - Android "

1GB memory

POSTER & Videowall same Screen

## TK-PRO-IP 1 PRO "P1,86"

- High Refresh Rate: 3840Hz
- A Class Led Chip
- High Quality PCB
- High Quality MASK
- Rotation 90 Degree



## Features

- \*\*\* FRONT SERVICE
- \*\*\* Light Weight
- \*\*\* Magnesium Die-Casting
- \*\*\* 3 in 1 Case weight with products: 129kg.
- \*\*\* Faster Cooling
- \*\*\* Advanced and safety Lock
- \*\*\* Nova Star Controller
- \*\*\* SPACE BLACK

MODEL NAME	TK-PRO-IP-1 "P1,86"
Features	:
Series	Pro
Panel installation type	Fix Instalation
Operating Environment	Indoor
Pixel Pitch	1,86mm
Brightness	>800 Nits
Refresh Rate	>3840Hz
Weight / m2	<22
Material Brands	
Lamp	Class A
Entegred	Chipone or Smilar
Powersupply	Meanwell or Smilar
Controller	Novastar
Connectors : Seetronic	Seetronic
Module Specifications	:
Pixel Configuration	SMD 1515
LED Chip	Cooper
LED	Space Black
Module Size (mm)	320mm x 160mm
Module Resolution	172 x 86
Processing	>14-16 Bit
PCB Quality	Best Quality
Module - Mask Quality	Normal Mask
Picture / Video Quality	High Quality
Grey Scale	>262144
Cabinet Specifications	:
Module Per Cabinet	24 MODULE
Cabinet Size (mm)	640 x 1920 x 70
Cabinet Material	Die-Casting Magnesium
Weight Per Panel Net kg.	27
Cabinet Resolution	344 x 1,024
Pixel Density / Cabinet	352256
IP Rating	IP40
Others Specifications	:
Driving IC Type	PWM
Refrate Quality 2	Highend Refresh Rate
No Waterless Ripple of Camera	>%75
Driving Method " Scan "	1/29
Resolution/SQM	538 x 538
Pixel Density / m2	289444
White Color Calibration (Adj.)	3.500K~8.500K
Horizontal Viewing Angle	140 (±30)
Vertical Viewing Angle	140 (±30)
Low Latency	No
HDR	No
Mapping	Yes
Rotation per 90 Degree	Yes
Free Rotation (with R5)	Optional
Clear View	Optional
Refresh Quality	High Quality
High Refresh (PLL inside)	-
High Refresh Power Saving	Yes
High Refresh Dynamic Power Saving	-
Expected LED Lifetime %50	>100.000 Hours
Operating Temperature Range	-15 – +45 (±10)
Operating Humidity Range	-40! " +60! ,10%-90%RH
Power on Time (<w/sqm)	800
Power Consumption (<w/sqm)	670
Average Power Consumption (<w/sqm)	201
Voltage Range	47 ~ 63Hz / 110 ~ 240 VAC
Version	REV22
Packing include	Plate-Power-Cat5 Cable
Usage Area	Advertisement, Shopping Center, Restaurant & info Board
Certificate	CE/EMC/LVD-ATR-EUR1 ISO-9001:2015 ISO-14001:2015

size : 640mm



size : 1.920mm

27KG.



size : 70mm



3 IN 1  
129KG.



## PRODUCT PHOTO



FAST ROTATION : 0 - 90 - 180 - 270 - 360



FRONT SERVICES



QUALITY IN DETAIL



Ethernet

USB Disc



Power in

HDMI in

## Ultra High Definition

It delivers a truly amazing picture with extraordinary pixels producing an image that is HD quality in an LED Screen. ipsum



QUALITY IN DETAIL



CASE



CONNECTION



HANDLE



PARST OF FOR WALL



BALL



HANGING

The support structure has to be provided and installed by the customer because they vary from project to project. The following issues must be considered:

**Weight tolerances:** Ensure that the support structure and the floor on which or the wall against which the support structure has to be installed, is qualified to handle the complete weight of the LED display screen.(which can be provided by manufacturer.

**Environmental conditions:** Humidity, wind, temperatures, rain, snow etc.

**Location:** Outdoor/.Indoor, altitude, etc. Usually, for outdoor display screen, the customer should build top cover and side cover for IP protection (Including waterproof and dustproof)

**Ground stability**

**Front clearances:** For making sure there is sufficient free area in front of the LED display screen and respect the maximum viewing angles and distance. Local regulations regarding such installation.



### ULTRA WIDE VIEWING ANGLE



Both 160° from horizontal & vertical for the viewing angle.  
Seeing from five directions, it would be still the natural and clear image in an LED display.

### ULTRA FAST RESPONSE



Perfect Rendering Dynamic Picture

Response speed



Smear Ghosting Phenomenon

### 18 BIT GREY SCALE

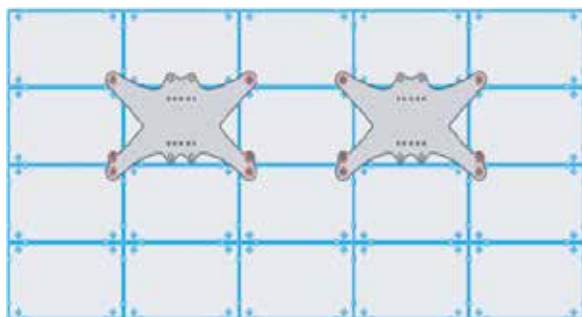


AVA LED



Others



**NEUTRIK®****SEETRONIC**

VISION



# AVA LED

[www.avaledscreen.com](http://www.avaledscreen.com)

[info@avaledscreen.com](mailto:info@avaledscreen.com)

AVA GROUP GMBH

Adress: Seelbachstraße 5, 66687 Wadern, Germany

Phone : +49 211 730 64 817

