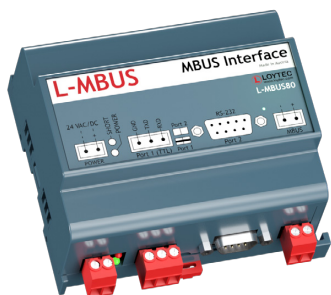
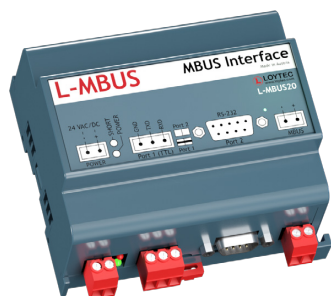


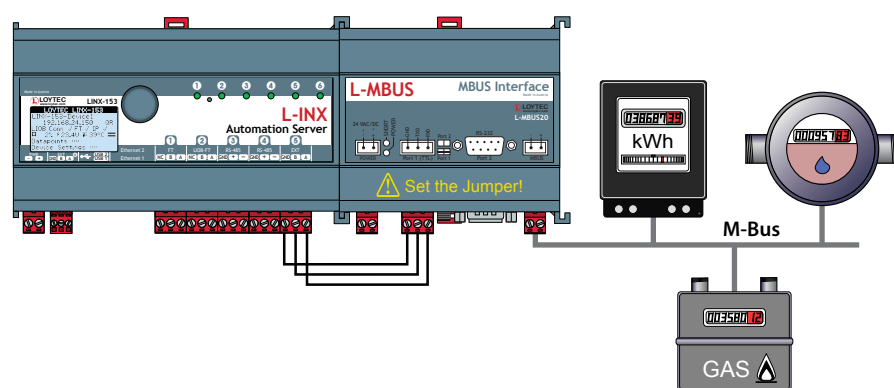
Datasheet #89027522



The L-MBUS level converters are used to connect an M-Bus network to a LOYTEC device. Up to 20 or 80 M-Bus devices can be connected via L-MBUS20 or L-MBUS80.

TTL Connection

The TTL port is used to connect the L-MBUS to the EXT port of L-INX Automation Servers, L-ROC Room Controllers, and also to the L-GATE Gateways. The interface is galvanically isolated.



General Specifications

Dimensions (mm)	107 x 100 x 60 (L x W x H), DIM024	
Installation	DIN rail mounting following DIN 43880, top hat rail EN 50022	
Power supply	24 VDC / 24 V AC ±10 %	
Operating conditions	0 °C to 50 °C, 10 – 90 % RH, noncondensing, degree of protection: IP40, IP20 (terminals)	

Specifications

Type	L-MBUS20	L-MBUS80
Power consumption	9.6 W	14.4 W
Baud rate	300 to 9600 baud	300 to 9600 baud
Interfaces	1 x TTL or 1 x RS-232 (EIA-232), galvanically isolated 1 x M-Bus	1 x TTL or 1 x RS-232 (EIA-232), galvanically isolated 1 x M-Bus
For use with	L-INX Automation Servers, L-ROC Room Controllers, L-GATE Gateways, LIOB-586/587/588/589 Controllers	

Resource limits

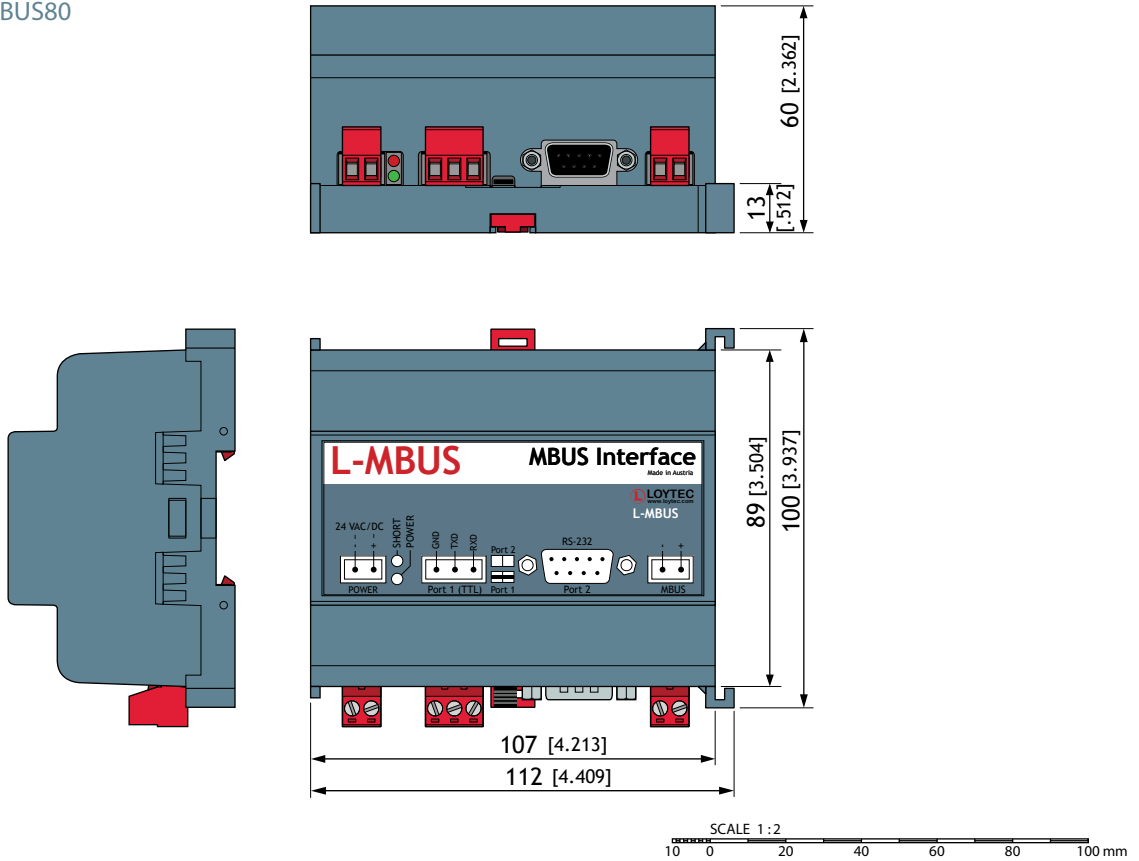
M-Bus devices	Up to 20	Up to 80
---------------	----------	----------

Order number Product description

L-MBUS20	M-Bus level converter for 20 M-Bus devices
L-MBUS80	M-Bus level converter for 80 M-Bus devices

Dimensions of the devices in mm and [inch]

DIM024 L-MBUS20
L-MBUS80



The products of LOYTEC electronics GmbH are subject to constant development. Therefore, LOYTEC reserves the right to modify technical specifications at any time without prior notice. The most recent datasheet can be downloaded from www.loytec.com.