

GÜVEN SOĞUTMA
ÜNİTELERİ SAN. VE TİC. A.Ş.

Addr: Hastane Mah. Hadimköy İstanbul Cd. No:78/1
34555, Arnavutköy, İstanbul, TURKEY
Tel: +90 212 771 51 12 - 771 51 13
Fax: +90 212 771 51 10
www.gvn.com.tr



GVN STANDART PRODUCT

Customer

SUCTION LINE ACCUMULATORS & HEAT EXCHANGER

Product

SLA.E.33B.42.16.13.F4

Code

Customer Code

DESIGN DATA

Capacity [Lt.]	13 Lt.
Design Pressure [PS]	33 Bar
Pneumatic Test Pressure [PT]	36 Bar
Hydraulic Test Pressure	48 Bar
Design Temperature [TS]	Min.-20C / Max.+130C
Cooler Fluid Type	HFC-CFC-HCFC
Fluid Group	2
Category	CAT II / D1
Desing Calculation	EN 14276-1/EN 13445-3
Welded Joint Efficiency	0.85
Material Group (Shell / Head)	1.2
Testing Group	3b
Corrasion Allowance	0,1 mm
Ndt	10%
Packaging Size & Weight	00*00*00 & 00 Kg.
Drawed By	Ö.TÜRKER
Approved By	D.GÜL
Date	25.11.2022
Color	RAL 5009

MATERIAL DATA

No	Connection	Model	Code	Qty
1	Inlet Connection	ODS 42 H:100	106.060.B09.000.018	1
2	Outlet Connection	ODS 42 H:100	106.060.B09.OUT.100	1
3	Heat Exchanger Conn.	ODS 5/8"H:120	106.060.B04.OUT.120	2
4	Safety Valve Conn.	NPT 1/2" H:18	106.060.F04.NPT.T18	1
5	Blind Plug	NPT 1/2" Plug	106.130.F04.KTP.023	1
6	Shell	Ø219x3 H:234	204.SLA.033.219.001	1
7	Head Torispheric	Ø219x2,5 H:75	101.033.219.001.000	1
8	Head Torispheric	Ø219x2,5 H:75	201.033.219.001.007	1
9	Exchanger Pipe	Ø16x1	115.016.ESJ.0CU.003	1
10	Skirt With	Ø205x2,5 H:18	105.004.205.001.001	1
11	Saparator	92X55x2,5	105.009.092.055.001	1
12	Pipe	Ø35x1,5	204.C35.015.SLA.001	1

GENERAL NOTES

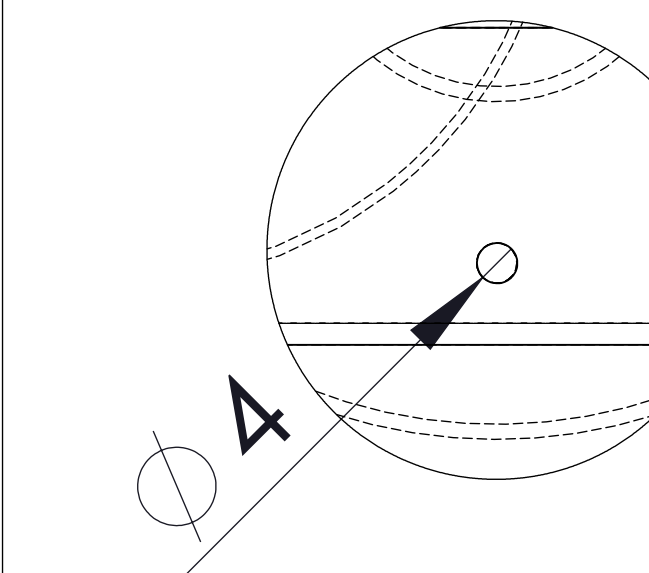
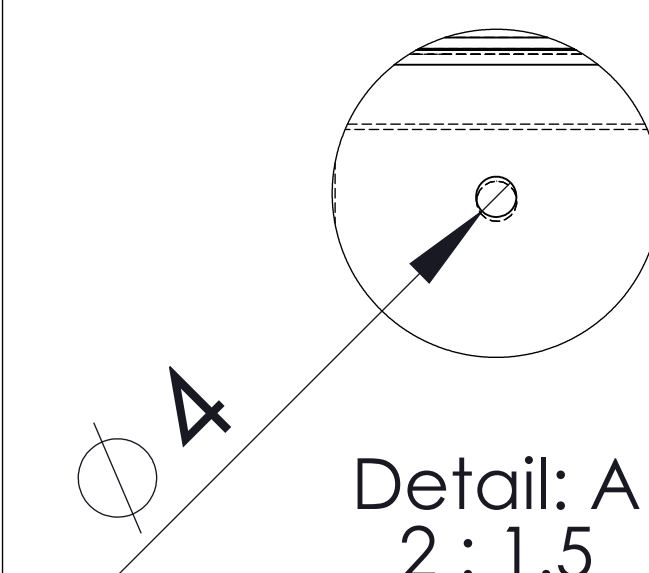
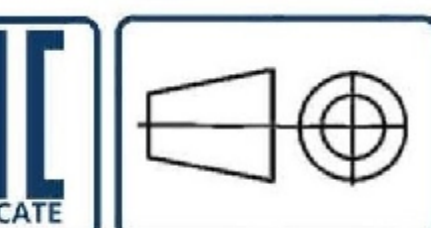
-Max. allowable operating pressure (PS) according to the temperature range:
1) Allowable operating temperature : min. -20C° / max. +130C° PS1 = 33 Bar
2) Allowable operating temperature : min. -40C° / max. -20C° PS2 = 24 Bar
-Unless otherwise specified dimensions in MM
-Unless otherwise specified do not scale
-Unless otherwise specified tube must be clean&free from burrs inside&outside&uitable for soldering
-Unless otherwise specified do not scale indicated thickness are min. after forming or machining
-Unless otherwise specified dimension tolerances according to EN 113445-4

REVISIONS

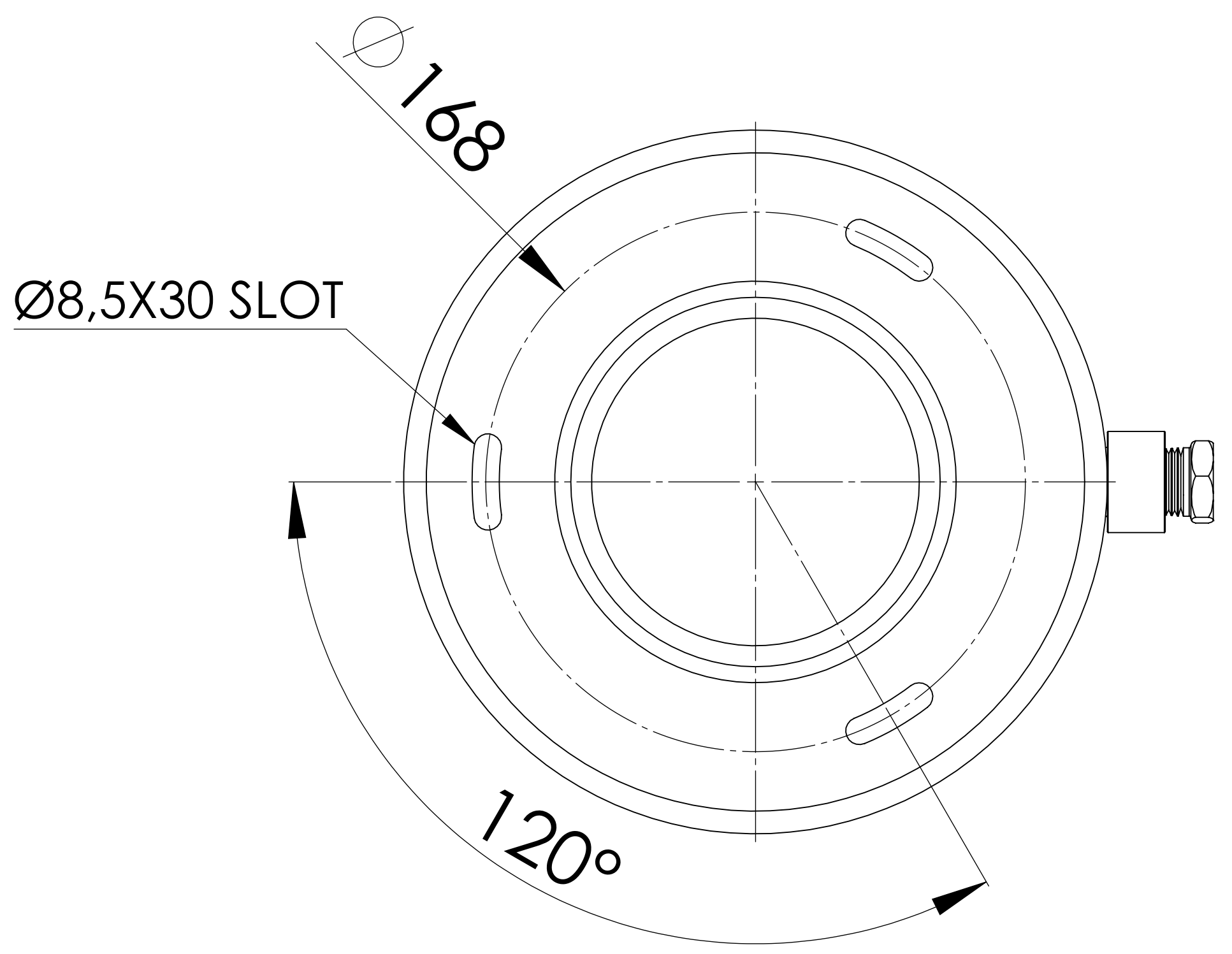
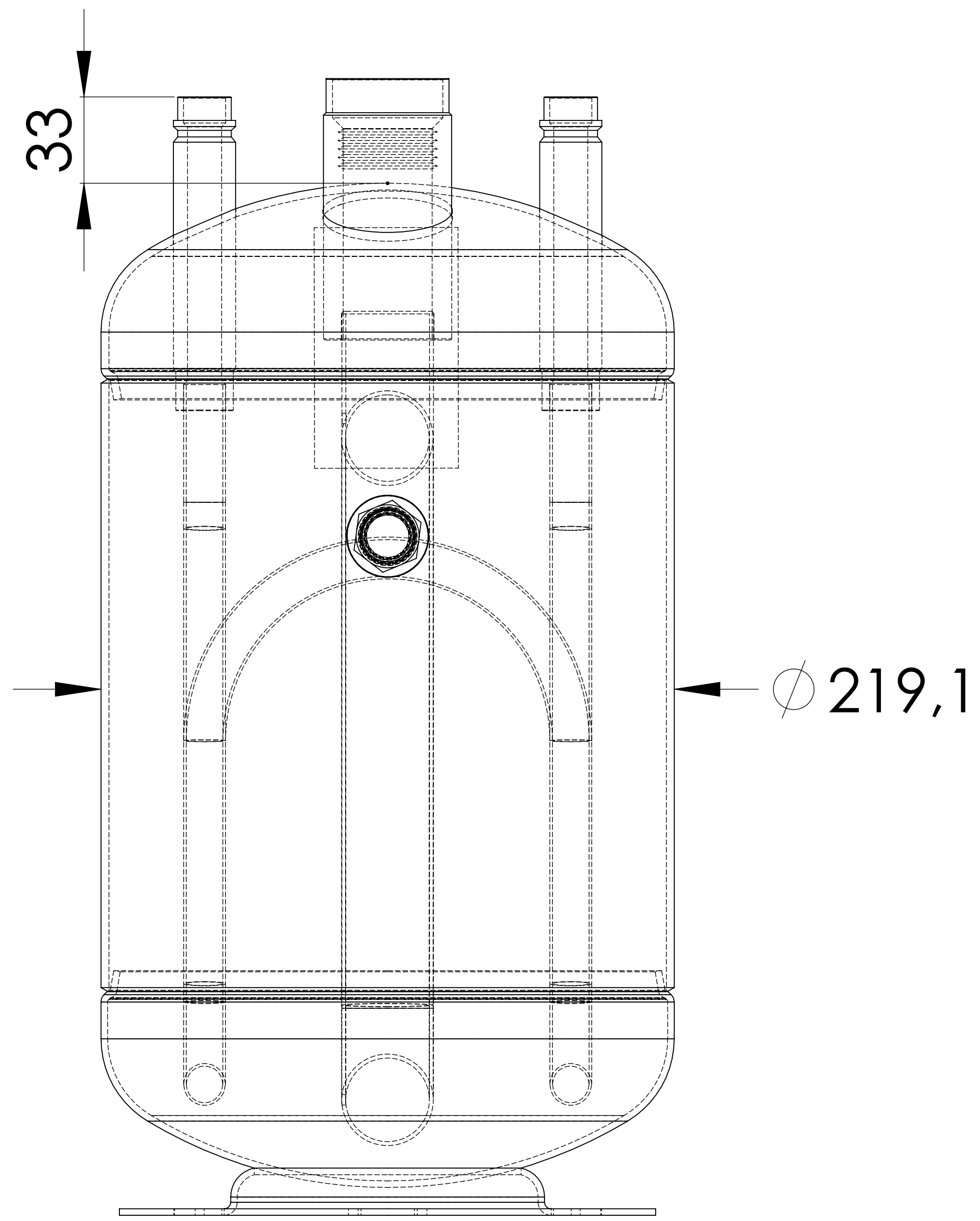
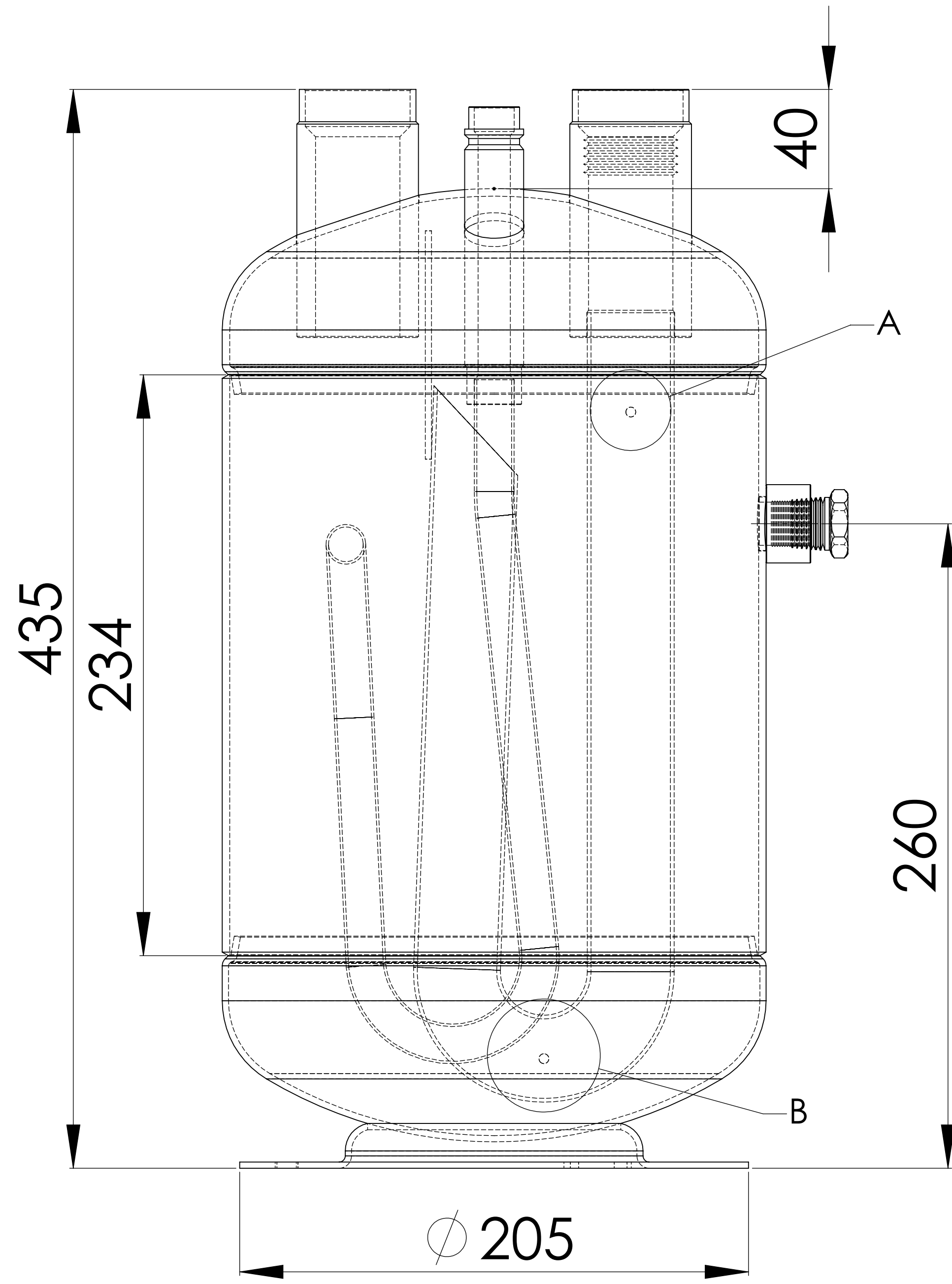
No	Details Of Change	Date	By
01			
02			
03			

RELATED DRAWINGS

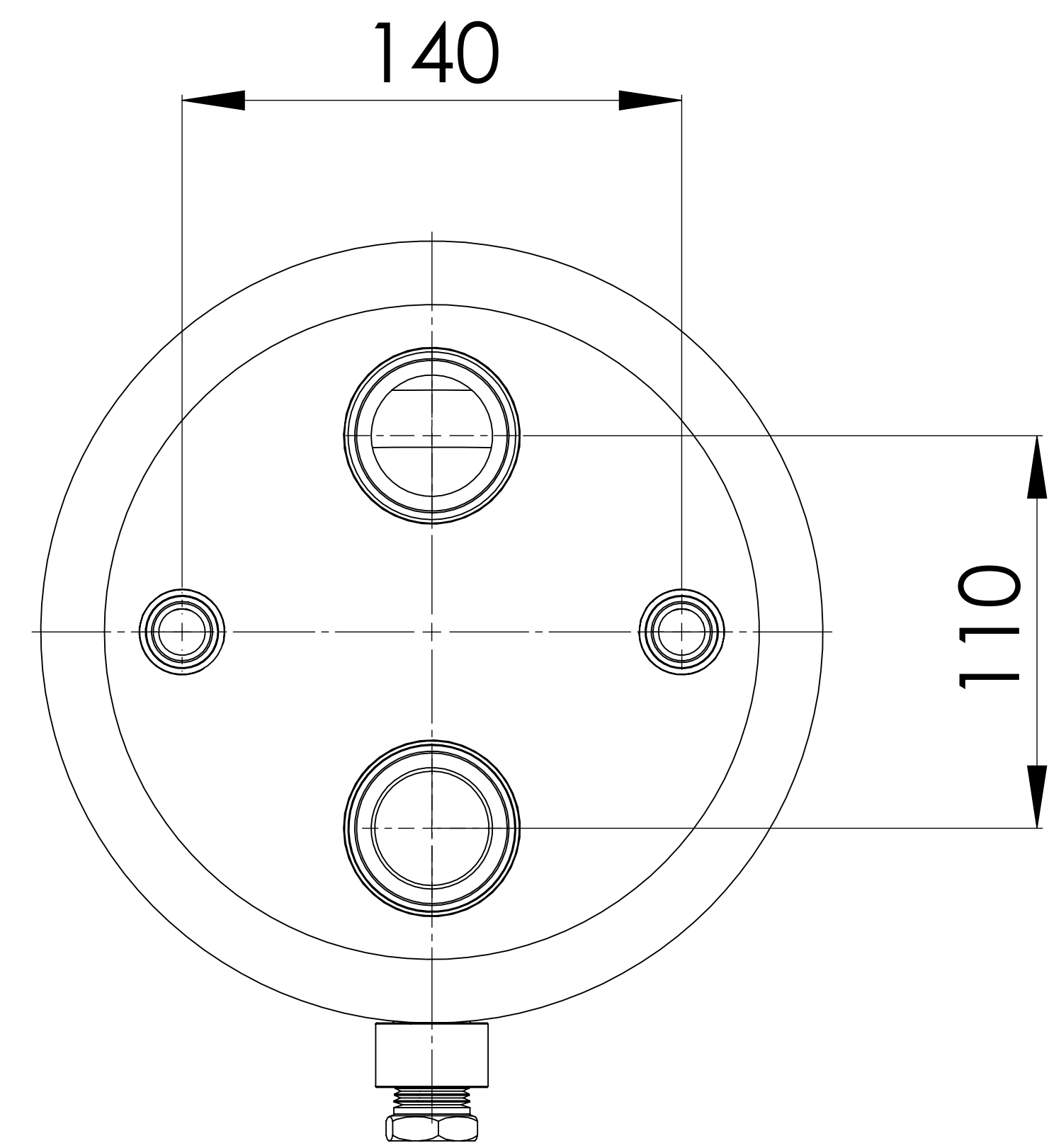
No	Description	Drawing No
01		
02		



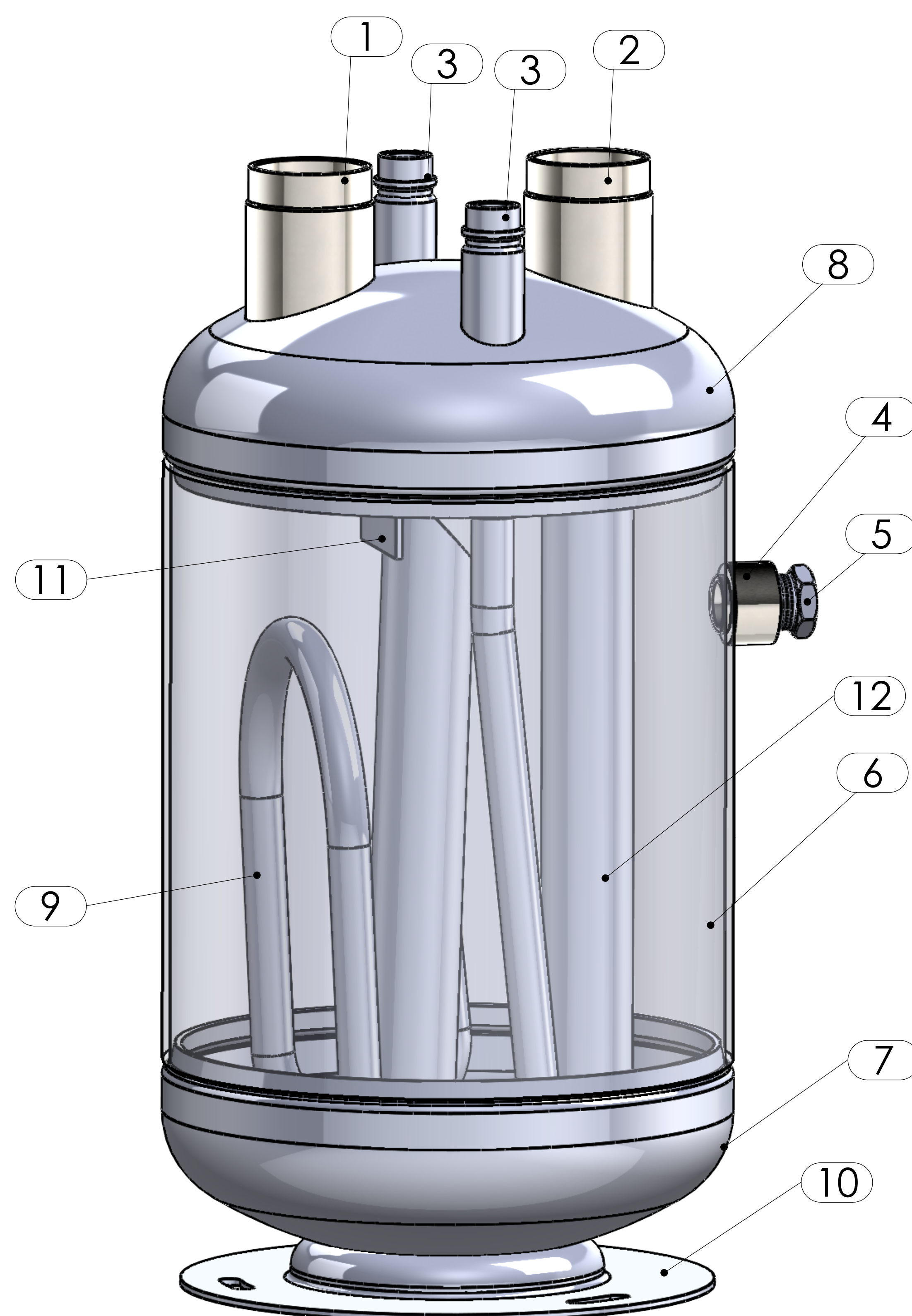
ÇIKIŞ BORUSU DELİK ÖLÇÜLERİ



BOTTOM VIEW



TOP VIEW



No	Assembly Codes	Qty
1	M005.000386	1

We reserve all rights in this document and in the information contained therein. Reproduction use or disclosure to third parties without express authority is strictly forbidden.