

GÜVEN SOĞUTMA
ÜNİTELERİ SAN. VE TİC. A.Ş.

Add: Hastane Mah. Hadimköy İstanbul Cd. No:78/1
34555, Arnavutköy, İstanbul, TURKEY
Tel: +90 212 771 51 12 - 771 51 13
Fax: +90 212 771 51 10
www.gvn.com.tr



GVN STANDART PRODUCT

Customer

SUCTION LINE ACCUMULATORS & HEAT EXCHANGER

Product

SLA.E.33B.66.28.25.F4

Code

Customer Code

DESIGN DATA

Capacity [Lt.]	25 Lt.
Design Pressure [PS]	33 Bar
Pneumatic Test Pressure [PT]	36 Bar
Hydraulic Test Pressure	48 Bar
Design Temperature [TS]	Min.-20C / Max.+130C
Cooler Fluid Type	HFC-CFC-HCFC
Fluid Group	2
Category	CAT II / D1
Desing Calculation	EN 14276-1/EN 13445-3
Welded Joint Efficiency	0.85
Material Group (Shell / Head)	1.2
Testing Group	3b
Corrasion Allowance	0,5 mm
Ndt	10%
Packaging Size & Weight	00*00*00 & 00 Kg.
Drawed By	Ö.TÜRKER
Approved By	D.GÜL
Date	29.11.2022
Color	RAL 5009

MATERIAL DATA

No	Connection	Model	Code	Qty
1	Inlet Connection	ODS 2 5/8" H:100	106.033.B12.OUT.100	1
2	Outlet Connection	ODS 2 5/8" H:100	106.033.B12.OUT.100	1
3	Heat Exchanger Inlet	ODS 1 1/8" H:120	106.060.B07.OUT.120	1
4	Heat Exchanger Outlet	ODS 1 1/8" H:120	106.060.B07.OUT.120	1
5	Safety Valve Conn.	NPT 1/2" H:18	106.060.F04.NPT.T18	1
6	Blind Plug	NPT 1/2" Plug	106.130.F04.KTP.023	1
7	Pipe	Ø60x1,5 H:400	204.060.015.SLA.001	1
8	Pipe	Ø102x3 H:390	204.102.030.SLA.000	1
9	Shell	Ø273x4 H:303	204.SLA.033.273.001	1
10	Head - Torispheric	Ø273x4 H:95	101.045.273.001.000	1
11	Head - Torispheric	Ø273x4 H:95	201.045.273.001.019	1
12	Skirt With	Ø320x2,5 H:27	105.004.320.001.001	1
13	Head	Ø107x2,5 H:24,5	201.030.102.001.000	1
14	Exchanger Pipe	Ø28x1,5	115.028.ES.J.OST.000	1
15	Saparator	110x70x2,5	105.009.110.070.001	1

GENERAL NOTES

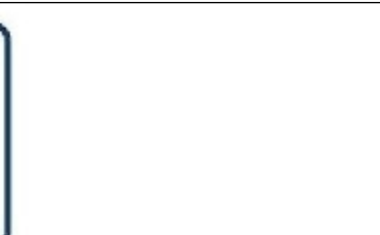
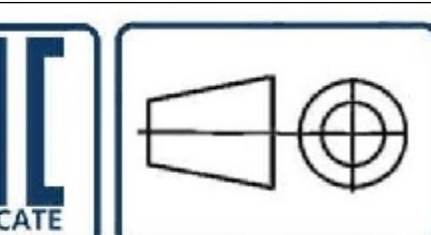
- Max. allowable operating pressure (PS) according to the temperature range:
- 1) Allowable operating temperature : min. -20C° / max. +130C° PS1 = 33 Bar
- 2) Allowable operating temperature : min. -40C° / max. -20C° PS2 = 24 Bar
- Unless otherwise specified dimensions in MM
- Unless otherwise specified do not scale
- Unless otherwise specified tube must be clean&free from burrs inside&outside&uitable for soldering
- Unless otherwise specified do not scale indicated thickness are min. after forming or machining
- Unless otherwise specified dimension tolerances according to EN 113445-4

REVISIONS

No	Details Of Change	Date	By
01			
02			
03			

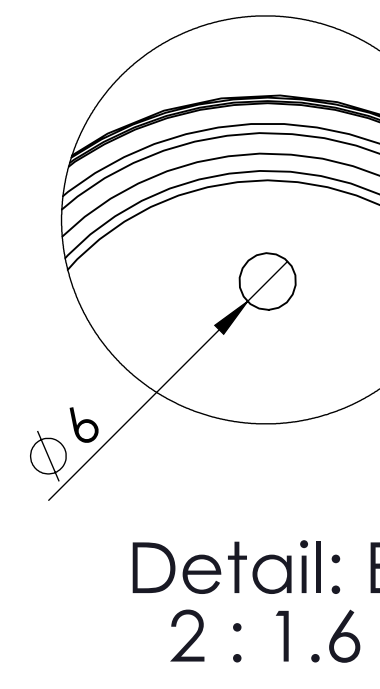
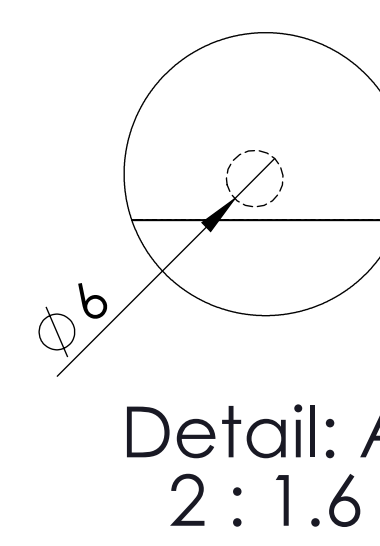
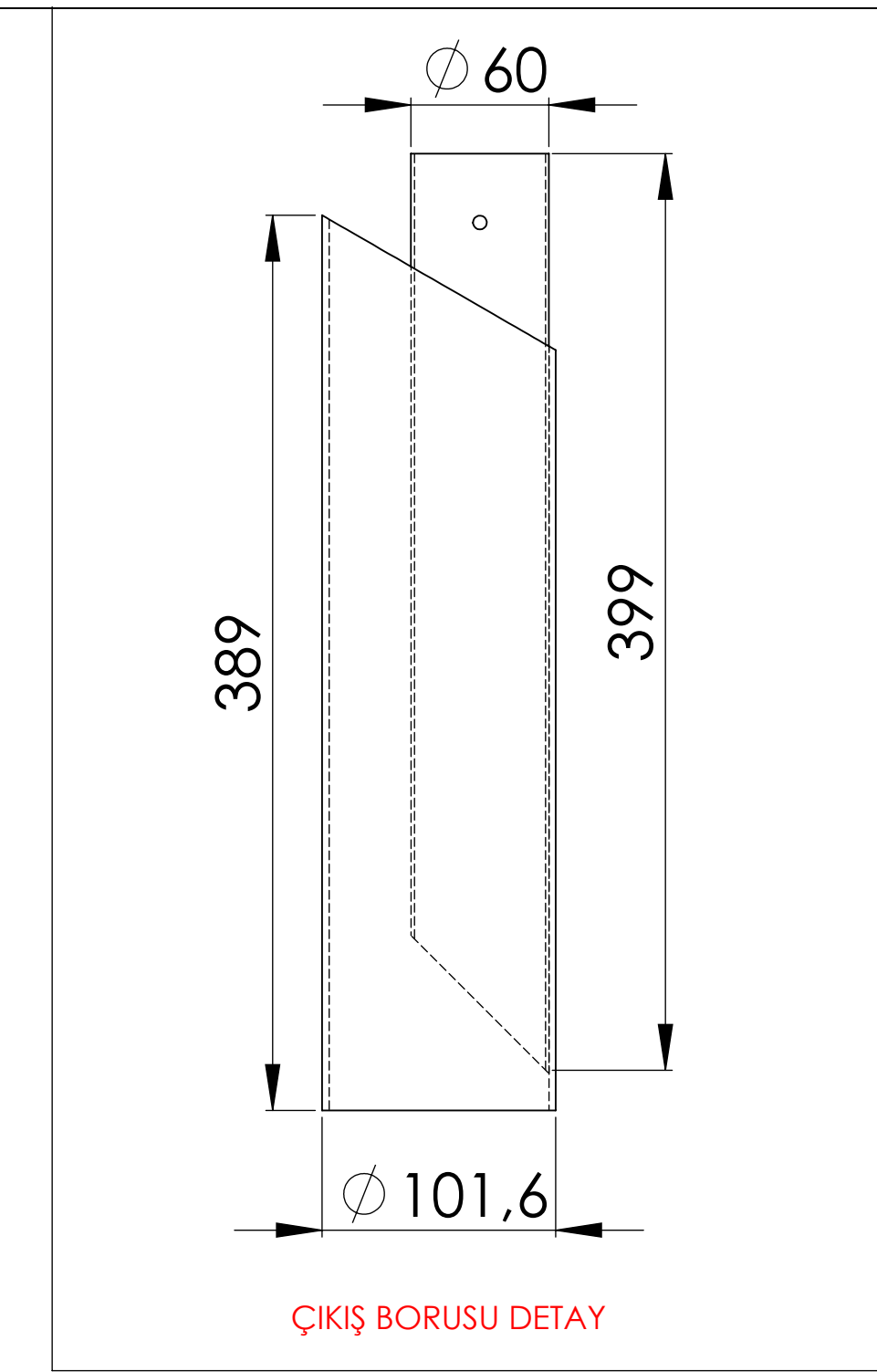
RELATED DRAWINGS

No	Description	Drawing No
01		
02		



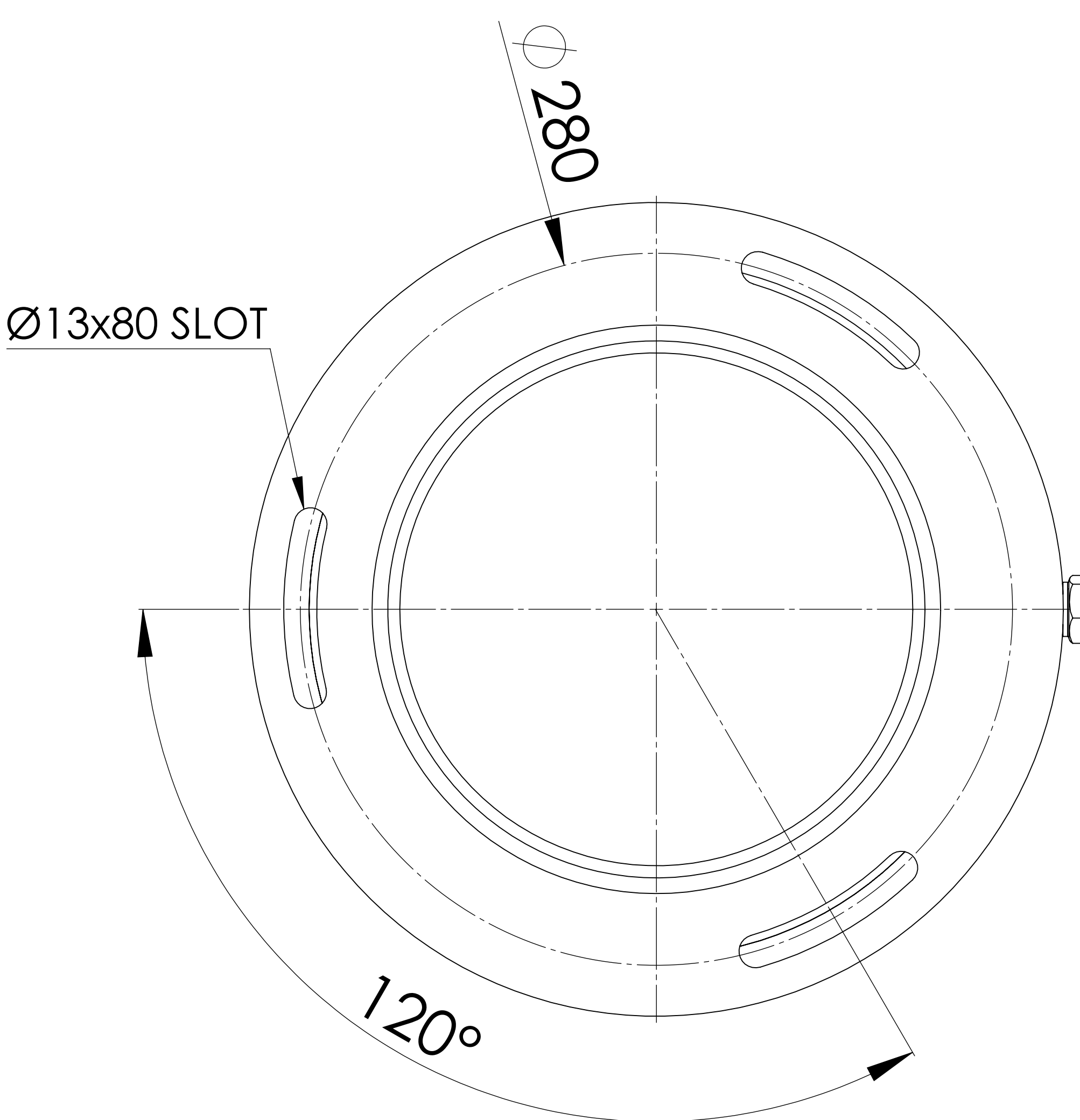
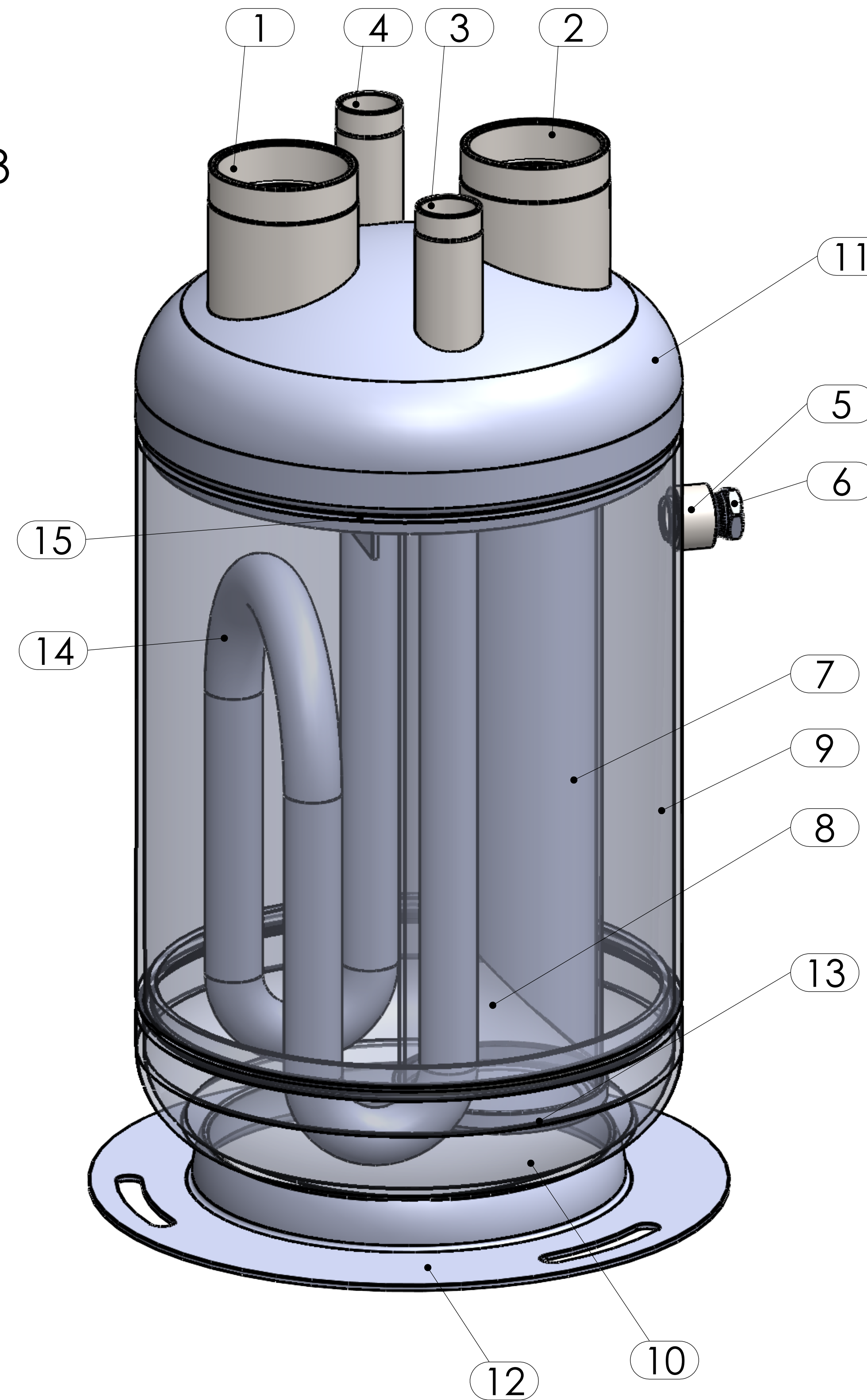
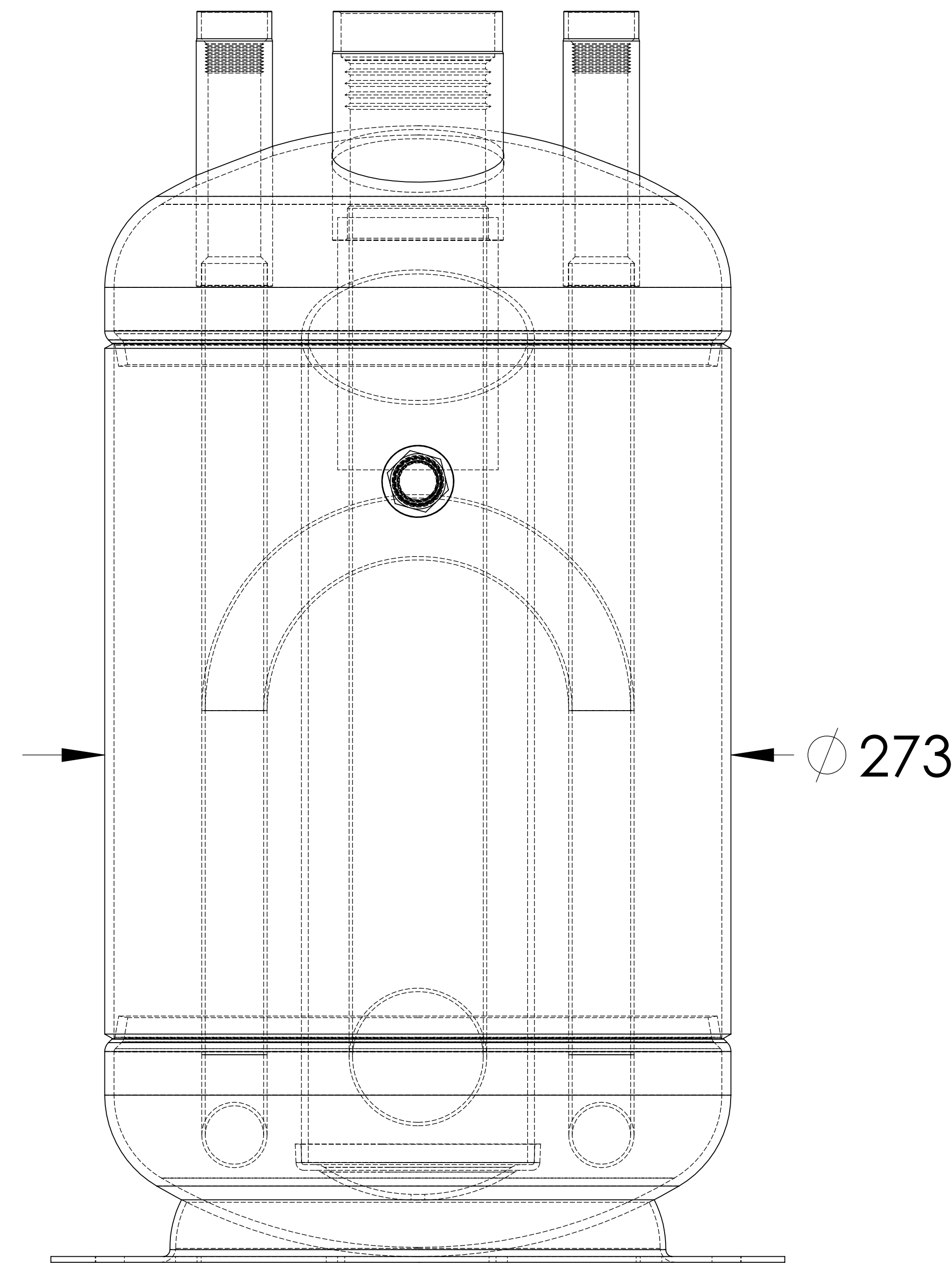
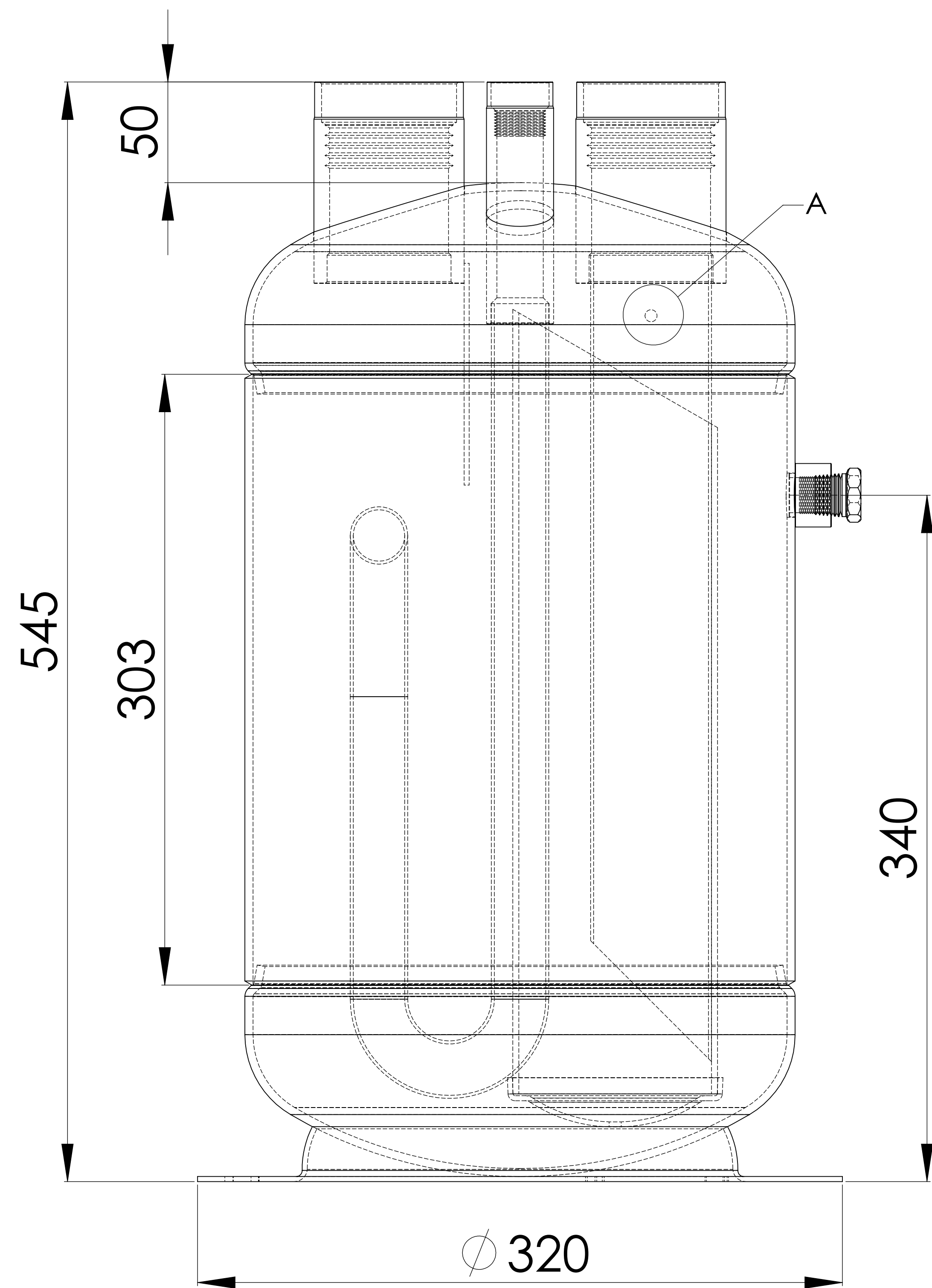
No	Assembly Codes	Qty
1	M005.000392	1

We reserve all rights in this document and in the information contained therein. Reproduction use or disclosure to third parties without express authority is strictly forbidden.

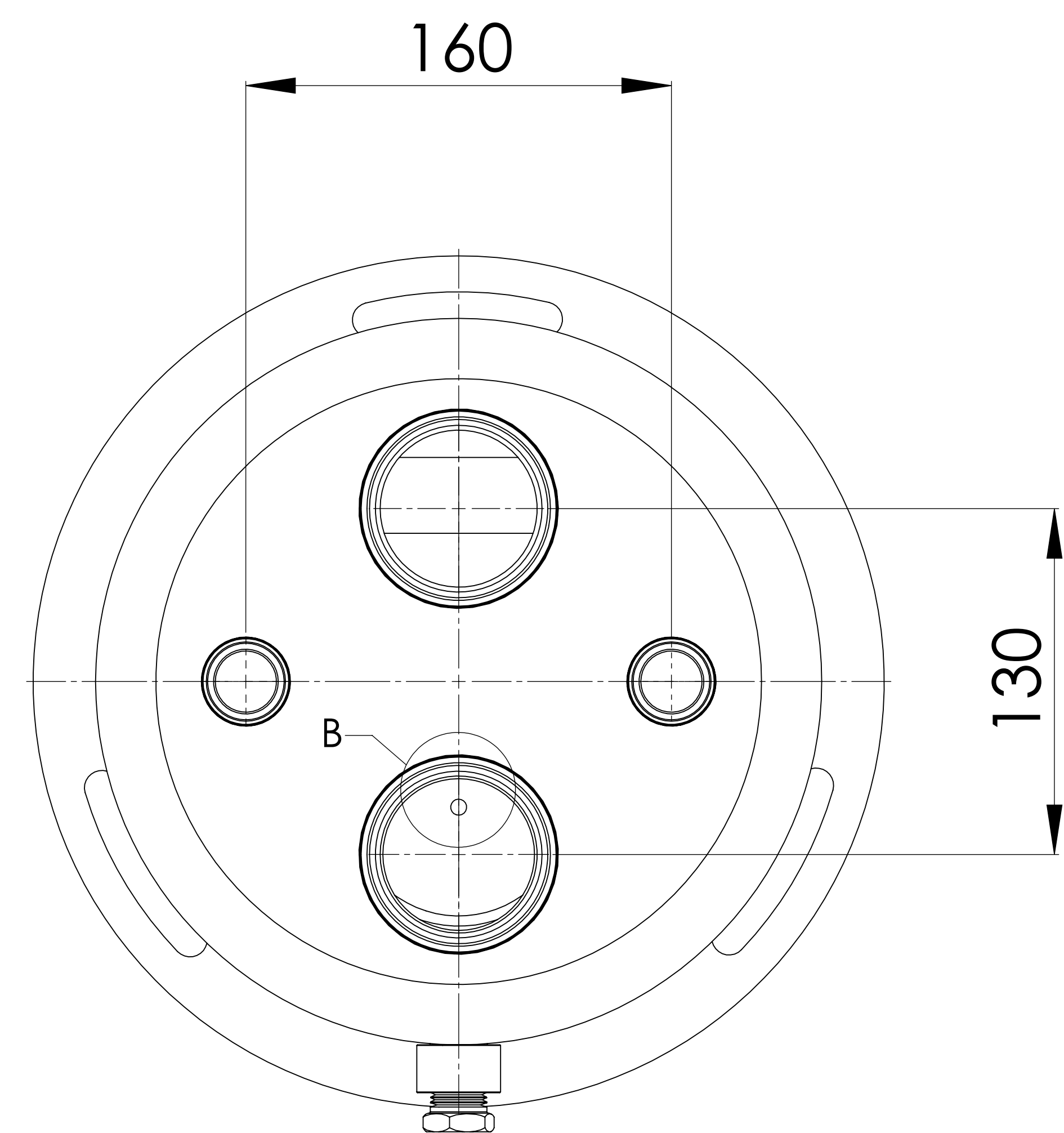


ÇIKIŞ BORUSU DETAY

ÇIKIŞ BORUSU DELİK ÖLÇÜLERİ



BOTTOM VIEW



TOP VIEW