

GVN STANDARD PRODUCT	Customer
OIL RESERVOIRS	Product
OR.130b.05	Code
	Customer Code

DESIGN DATA	
Capacity [Lt.]	5L
Design Pressure [PS]	130 Bar
Pneumatic Test Pressure [PT]	143 Bar
Hydraulic Test Pressure	186 Bar
Design Temperature [TS]	Min.-20C / Max.+130C
Cooler Fluid Type	HFC-CFC-HCFC-R744
Fluid Group	2
Category	CAT II / D1
Desing Calculation	EN 14276-1/EN 13445-3
Welded Joint Efficiency	0.85
Material Group (Shell / Head)	1.2
Testing Group	3b
Corrasion Allowance	0,5 mm
Ndt	10%
Packaging Size & Weight	00*00*00 & 00 Kg.
Drawed By	M.ABDULAZİZ
Approved By	D.GÜL
Date	25.08.2022
Color	RAL 5009

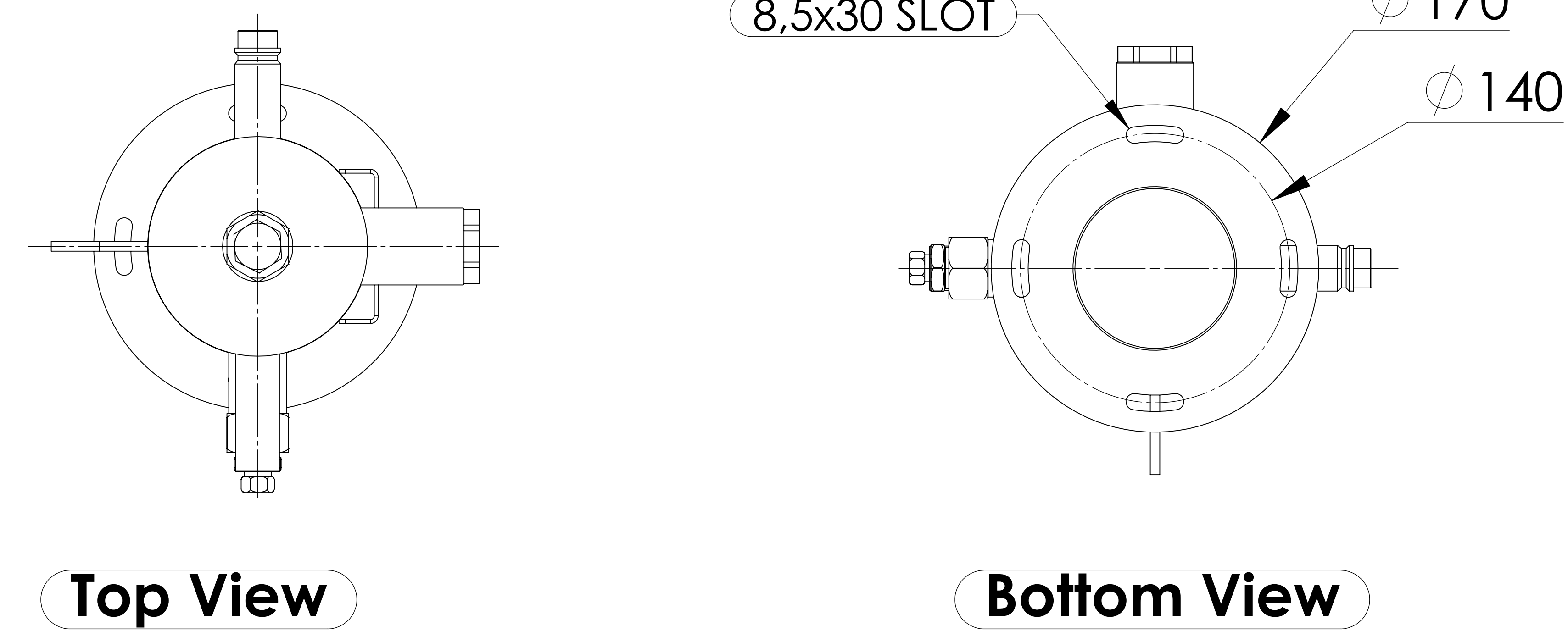
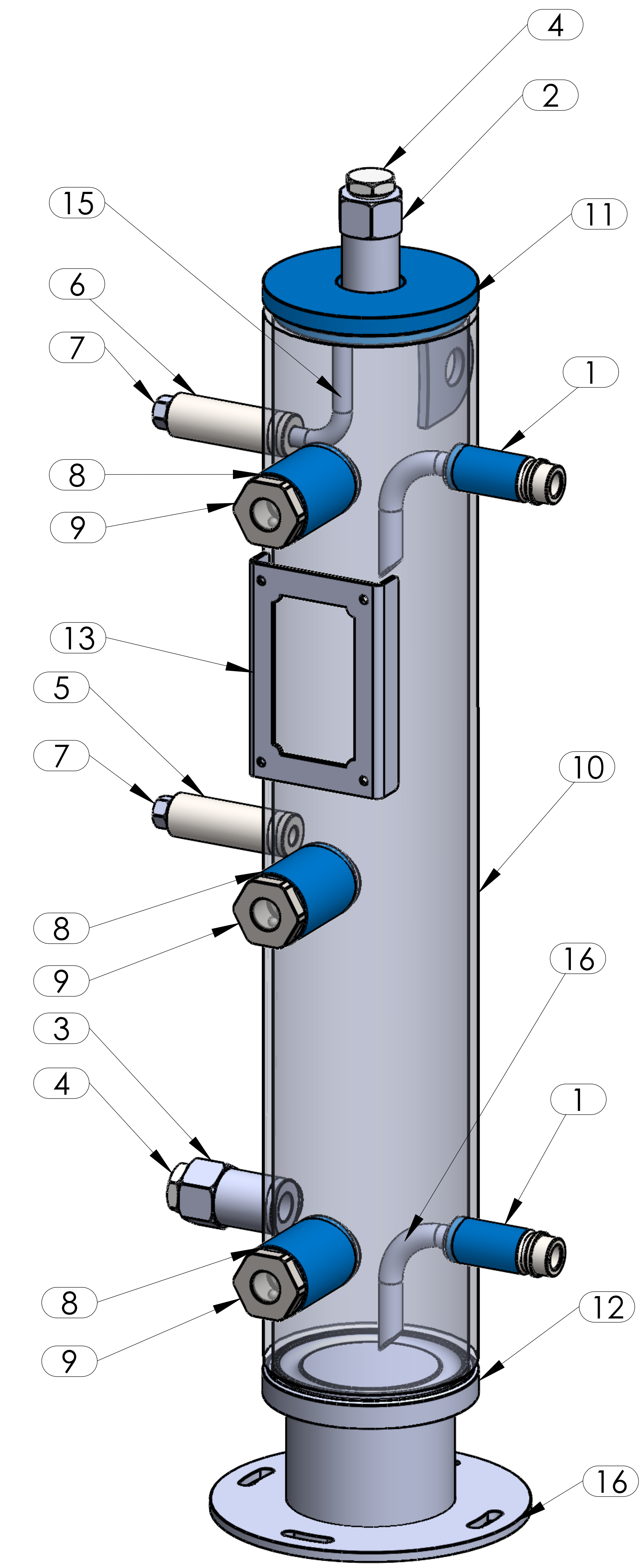
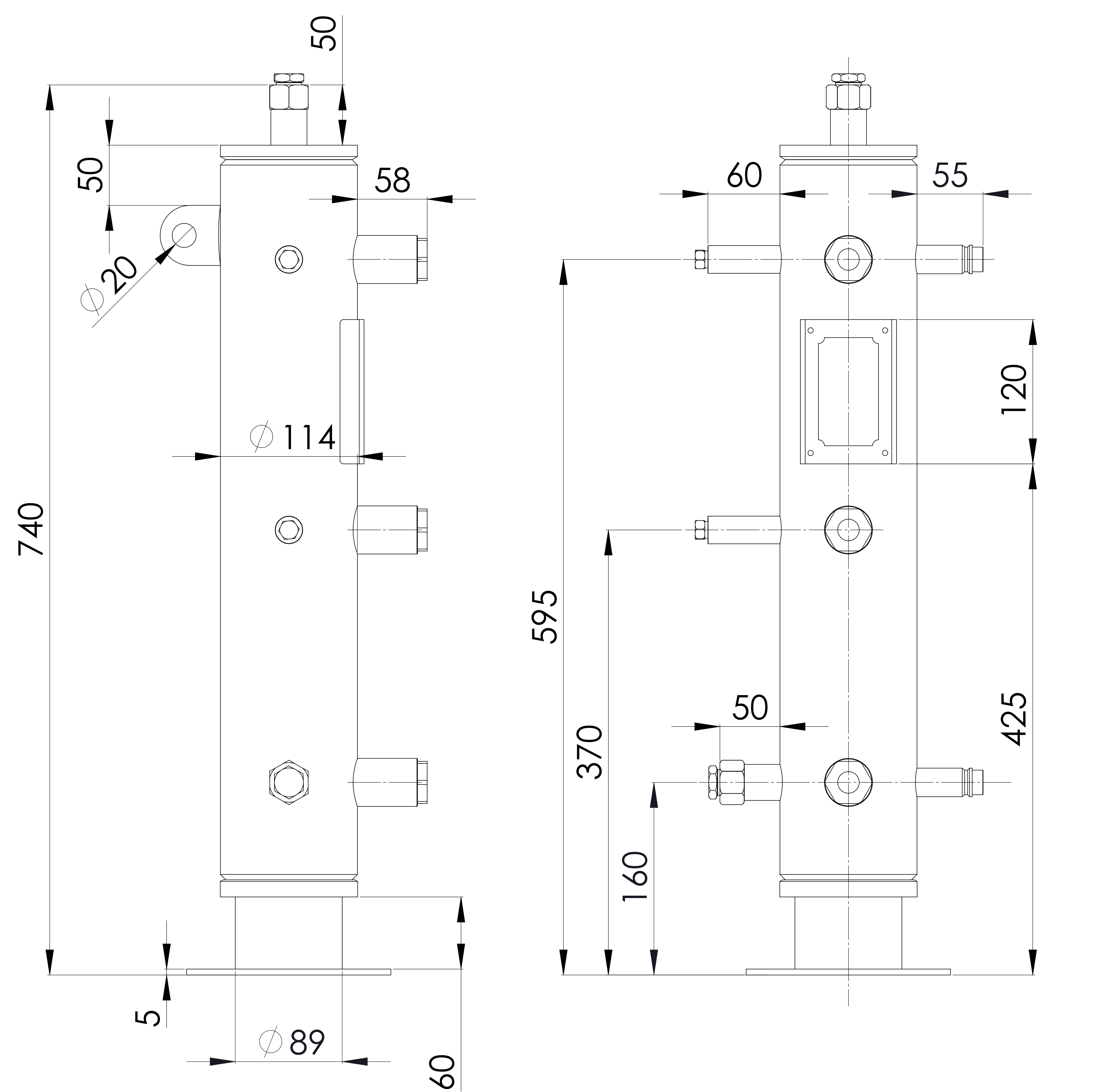
MATERIAL DATA					
No	Connection	Model	Code	Material	Qty
1	Outlet Connection	ODS 1/2" H:60	106.130.B03.000.001	Ø24 ST44-E275	2
2	Safety Valve Conn.	NPT 1/2"	106.130.F04.000.001	ST44- E275	1
3	Level Sensor Conn.	NPT 1/2"	106.130.F04.000.001	E275	1
4	Blind Plug	NPT 1/2"Plug	106.130.F04.001.001	E275	2
5	Charging Connection	NPT 1/4" H:70	106.130.F02.000.002	ST44 - E275	1
6	Diff. Pressure Valve Conn.	NPT 1/4" H:70	106.130.F02.000.002	ST44 - E275	1
7	Blind Plug	NPT 1/4"Plug	106.130.F02.001.001	S235	2
8	Sight Glass Conn.		106.0SW.038.002.001	E275	3
9	Sight Glass	SW38	SW-38	E275	3
10	SHELL	Ø114x5 H:599	204.ORO.130.005.001	P355N-EN10217-3	1
11	Top Flange	Ø114	107.130.ORO.114.001	P355GH	1
12	Cover	Ø114	107.130.OSC.114.003	P355GH	1
13	Label Plate	120x80x2	105.006.002.120.080	DD-13	1
14	Pipe	Ø12X1,5	106.060.B03.001.160	EN10297-1-E235	2

GENERAL NOTES

- Max. allowable operating pressure (PS) according to the temperature range:
- 1) Allowable operating temperature : min. -20C° / max. +130C° PS1 = 130 Bar
- 2) Allowable operating temperature : min. -20C° / max. -40C° PS2 = 97,5 Bar
- Unless otherwise specified dimensions in MM
- Unless otherwise specified do not scale
- Unless otherwise specified tube must be clean&free form burrs inside&outside&uitable for soldering
- Unless otherwise specified do not scale indicated thickness are min. after forming or machining
- Unless otherwise specified dimension tolerances according to EN 113445-4

REVISIONS			
No	Details Of Change	Date	By
01			
02			
03			

RELATED DRAWINGS		
No	Description	Drawing No
01		
02		



No	Assembly Codes	Qty
1	M006.000010	1

No	Connection	Model	Code	Material	Qty
15	Pipe	Ø9,7x1	106.060.F02.001.145	EN10297-1-E235	1
16	Base Plate	Ø170x5	105.005.170.001.001	S235	1



We reserve all rights in this document and in the information contained therein. Reproduction use or disclosure to third parties without express authority is strictly forbidden.