

GVN STANDARD PRODUCT **Customer**

COALESCENT OIL SEPARATORS & RESERVOIR **Product**

OS.CR.130b.28.1 **Code**

**Customer Code**

**DESIGN DATA**

Oil Volume / Capacity [Lt.]	4,1 / 7,3
Design Pressure [PS]	130 Bar
Pneumatic Test Pressure [PT]	143 Bar
Hydraulic Test Pressure	186 Bar
Design Temperature [TS]	Min.-20C / Max.+130C
Cooler Fluid Type	HFC-CFC-HCFC-R744
Fluid Group	2
Category	CAT II / D1
Desing Calculation	EN 14276-1/EN 13445-3
Welded Joint Efficiency	0.85
Material Group (Shell / Head)	1.2
Testing Group	3b
Corrasion Allowance	0,5 mm
Ndt	10%
Packaging Size & Weight	00*00*00 & 00 Kg.
Drawed By	M.ABDULAZİZ
Approved By	D.GÜL
Date	04.04.2023
Color	RAL 5009

**MATERIAL DATA**

No	Connection	Model	Code	Material	Qty
1	Inlet Connection	ODS 1 1/8" H:60	106.130.B07.000.009	ST44-E275	1
2	Outlet Connection	ODS 1 1/8" H:60	106.130.B07.000.001	ST44-E275	1
3	Oil Return Connection	ODS 1/4" H:45	106.130.B01.000.004	Ø20 ST44-E275	1
4	Pipe	Ø9x1	204.A09.010.000.145	EN10297-1 E235	1
5	Level Sensor Conn.	NPT 1/2"	106.130.F04.000.001	E275	1
6	Blind Plug	NPT 1/2" Plug	106.130.F04.001.001	E275	1
7	Sight Glass Conn.	SG SW38	106.0SW.038.002.001 REV 01	E275	2
8	Sight Glass	SW38	SW-38	E275-ST44	2
9	Elbow	42,4x2,6	114.042.001.001.001	S235JR	1
10	Holder Support	Ø46x30	105.010.FK0.065.003	S235	1
11	Filter Holder	Ø100 x 10	105.010.FK0.065.006	S235	1
12	Threaded Rod	M8 x 250mm	109.080.250.088.C01	8.8	1
13	Filter	FK.90.1	FK.90.1		1
14	Plastic Washer	M8	109.080.000.000.P03		1

**GENERAL NOTES**

- Max. allowable operating pressure (PS) according to the temperature range;
- 1) Allowable operating temperature : min. -20C° / max. +130C° PS1 = 130 Bar
- 2) Allowable operating temperature : min. -40C° / max. -20C° PS2 = 97,5 Bar
- Unless otherwise specified dimensions in MM
- Unless otherwise specified do not scale
- Unless otherwise specified tube must be clean&free from burrs inside&outside& suitable for soldering
- Unless otherwise specified do not scale indicated thickness are min. after forming or machining
- Unless otherwise specified dimension tolerances according to EN 113445-4

**REVISIONS**

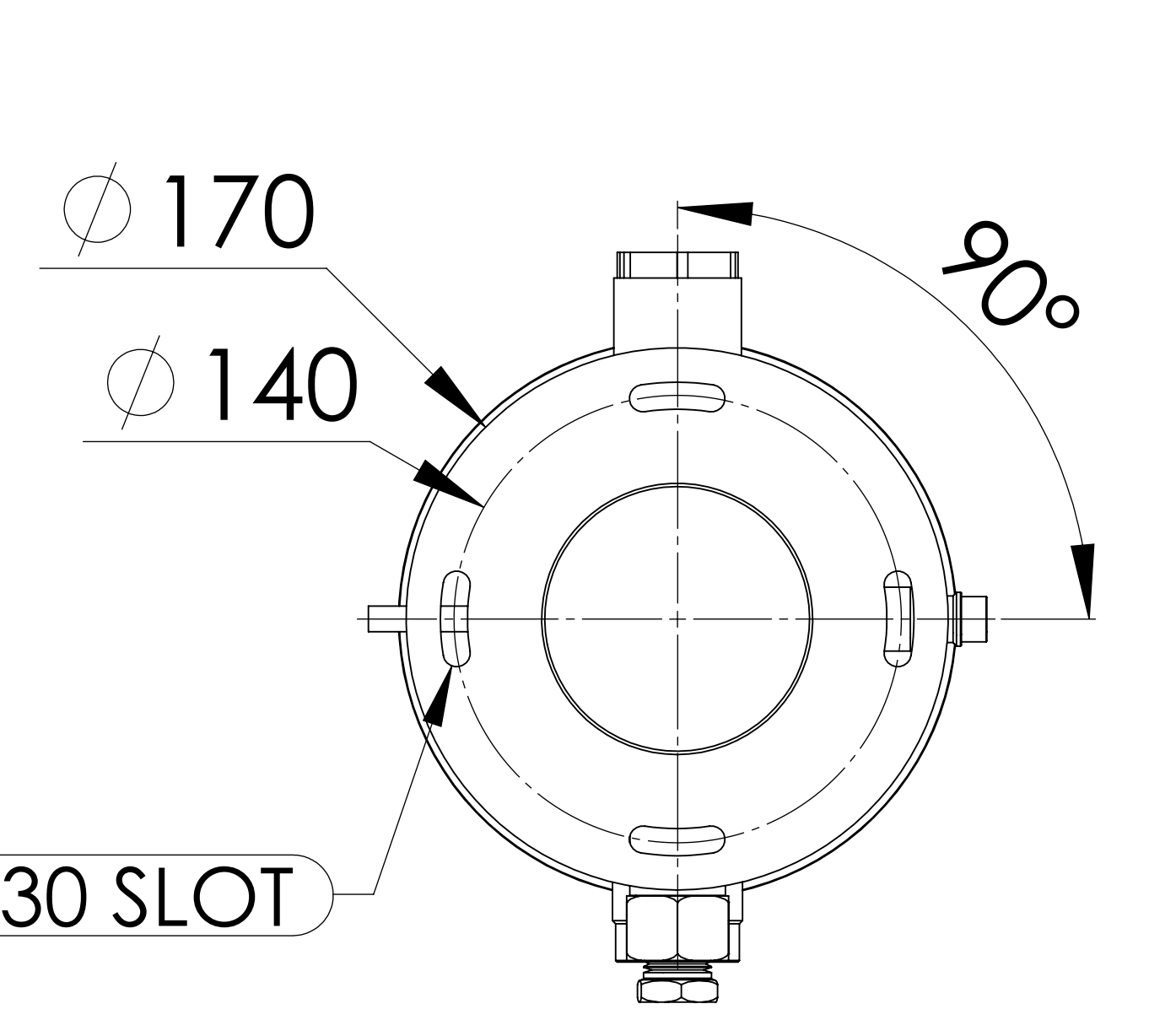
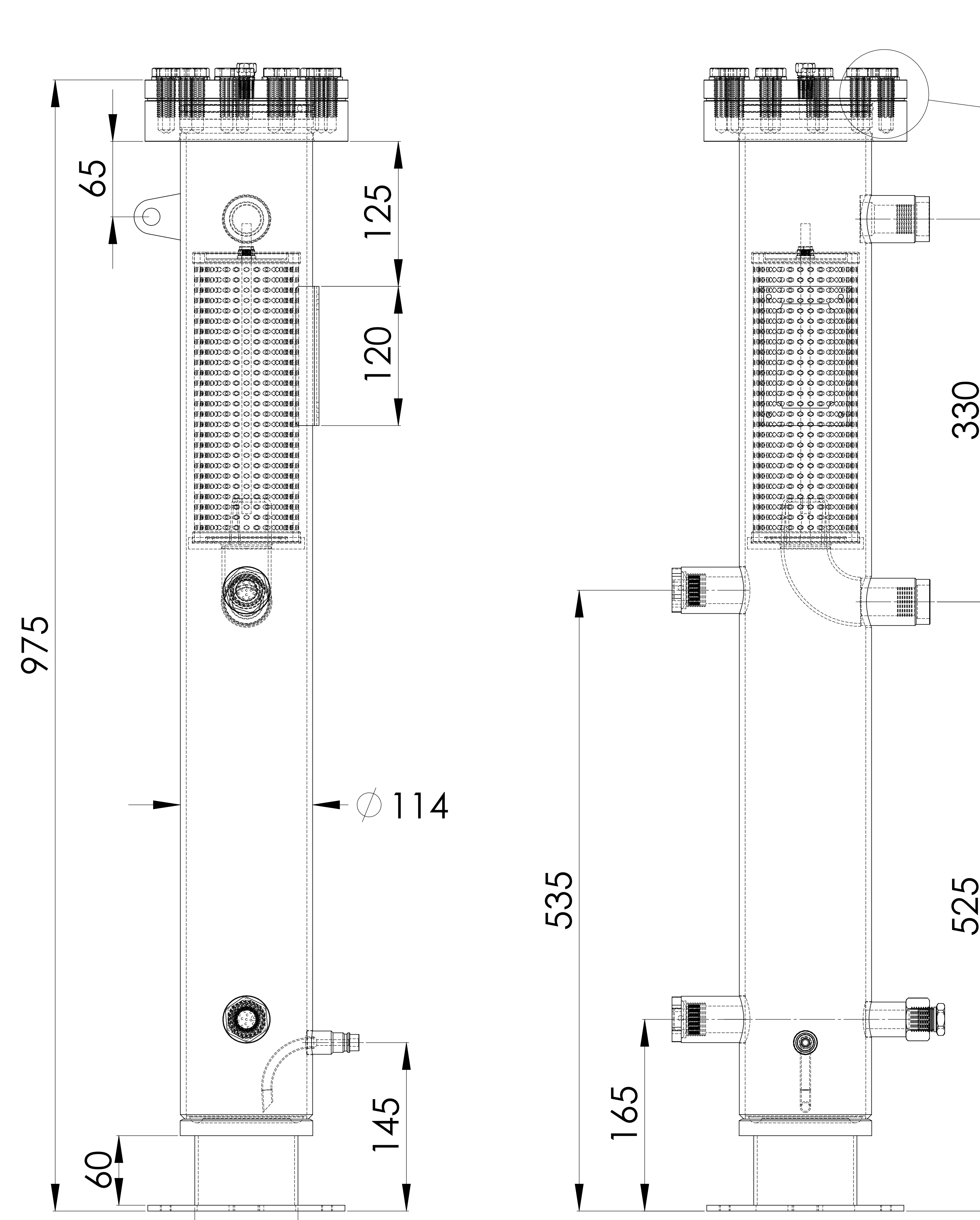
No	Details Of Change	Date	By
01			
02			
03			

**RELATED DRAWINGS**

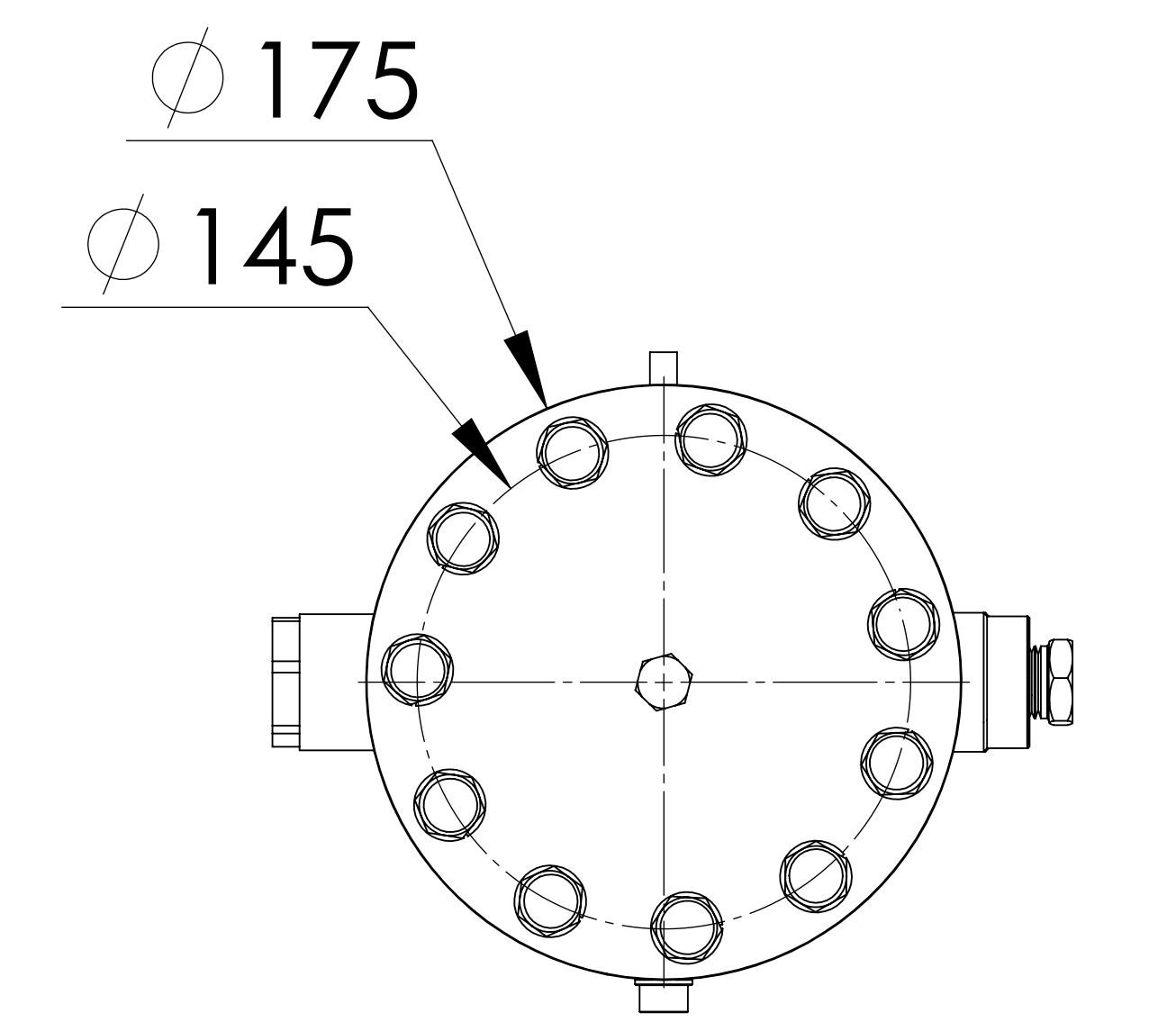
No	Description	Drawing No
01		
02		



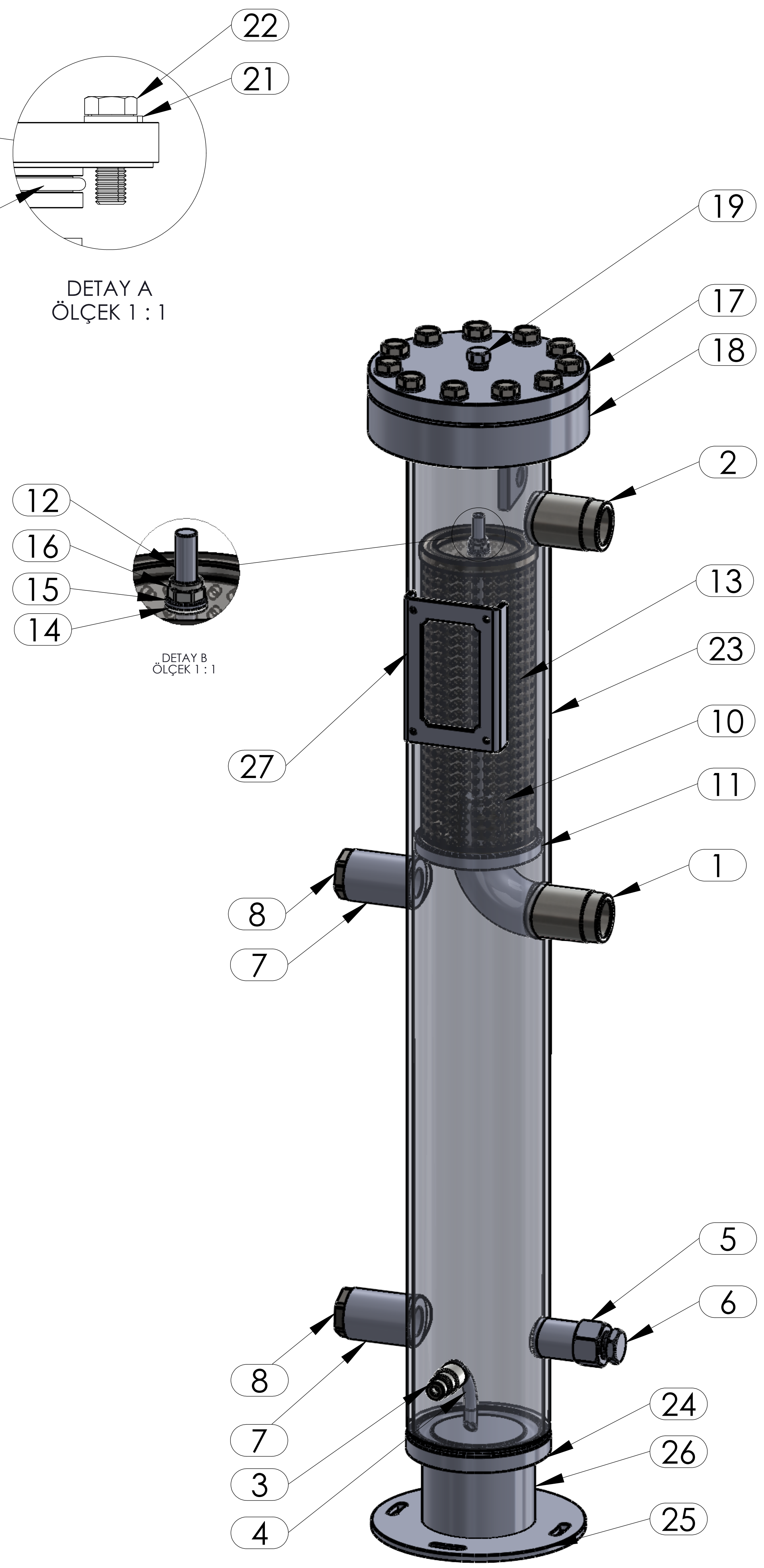
We reserve all rights in this document and in the information contained therein. Reproduction use or disclosure to third parties without express authority is strictly forbidden.



**Bottom View**



**Top View**



No	Connection	Model	Code	Material	Qty
15	Metal Washer	M8	109.080.000.000.P02		1
16	Lock Nut	M8	109.080.000.000.SF1		1
17	Top Flange	Ø177,5x34	107.130.OSC.114.001	P355GH	1
18	Bottom Flange	Ø175x35	107.130.OSC.114.002	P355GH	1
19	Blind Plug	NPT 1/4" Plug	106.130.F02.001.001	S235	1
20	Oring	107X5	108.107.005.00H.NBR	HNBR	1
21	Washer	M12	109.120.000.000.R01		11
22	Bolt	M12x35	109.120.035.088.C01	8.8	11
23	Shell	Ø114x5 H:850,0	204.OSC.R13.028.001	P355NH-EN10217-3	1
24	Blind Flange	Ø114	107.130.OSC.114.003	P355GH	1
25	Base Plate	Ø170x5	105.005.170.001.001	S235	1
26	Skirt	Ø76x3 H:16	104.130.H60.170.089	S235	1
27	Label Plate	120x80x2	105.006.002.120.080	DD-13	1

No	Assembly Codes	Qty
1	M005.000444	1