

# GÜVEN SOĞUTMA ÜNİTELERİ SAN. VE TİC. A.Ş.

Addr: Hastane Mah. Hadimköy İstanbul Cd. No:78/1  
34555, Arnavutköy, İstanbul, TURKEY  
Tel: +90 212 771 51 12 - 771 51 13  
Fax: +90 212 771 51 10  
www.gvn.com.tr



**GVN STANDART PRODUCT**

**Customer**

**SUCTION LINE ACCUMULATORS**

**Product**

**SLA.A.33b.80.32.F4**

**Code**

**Customer Code**

## DESIGN DATA

Capacity [Lt.]	32 Lt.
Design Pressure [PS]	33 Bar
Pneumatic Test Pressure [PT]	36 Bar
Hydraulic Test Pressure	48 Bar
Design Temperature [TS]	Min.-20C / Max.+130C
Cooler Fluid Type	HFC-CFC-HCFC
Fluid Group	2
Category	CAT III / H
Desing Calculation	EN 14276-1/EN 13445-3
Welded Joint Efficiency	0.85
Material Group (Shell / Head)	1.2
Testing Group	3b
Corrasion Allowance	0,5 mm
Ndt	10%
Packaging Size & Weight	00*00*00 & 00 Kg.
Drawed By	Ö.TÜRKER
Approved By	D.GÜL
Date	04.11.2022
Color	RAL 5009

## MATERIAL DATA

No	Connection	Model	Code	Material	Qty
1	Inlet Connection	ODS 3 1/8" H:60	106.033.B14.000.009	E275	1
2	Outlet Connection	ODS 3 1/8" H:60	106.033.B14.000.009	E275	1
3	Safety Valve Conn.	NPT 1/2" H:18	106.060.F04.000.001	E275-S144	1
4	Blind Plug	NPT 1/2" Plug	106.130.F04.001.001	E275	1
5	Pipe	Ø76x1,5	204.076.015.SLA.006	E235	1
6	Pipe	Ø114x3	204.114.030.SLA.001	E235	1
7	Shell	Ø323,9x4 H:257	204.SLA.033.324.002	P355NH EN 10217-3	1
8	Head - Torispheric	Ø323,9x4 H:100	101.033.324.001.000	P355GH EN 10028-2	1
9	Head - Torispheric	Ø323,9X4 H:96	201.033.324.001.010	P355GH EN 10028-2	1
10	Head	Ø114x2,5 H:30,5	201.030.114.001.000	P355GH-EN10028-2	1
11	Skirt With	Ø320x2,5 H:27	105.004.320.001.001	EN 10111 DD-13	1

## GENERAL NOTES

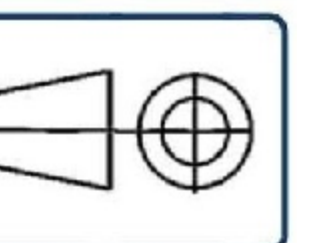
- Max. allowable operating pressure (PS) according to the temperature range;
- 1) Allowable operating temperature : min. -20C° / max. +130C° PS1 = 33 Bar
- 2) Allowable operating temperature : min. -40C° / max. -20C° PS2 = 24 Bar
- Unless otherwise specified do not scale
- Unless otherwise specified tube must be clean&free from burrs inside&outside&uitable for soldering
- Unless otherwise specified do not scale indicated thickness are min. after forming or machining
- Unless otherwise specified dimension tolerances according to EN 113445-4

## REVISIONS

No	Details Of Change	Date	By
01			
02			
03			

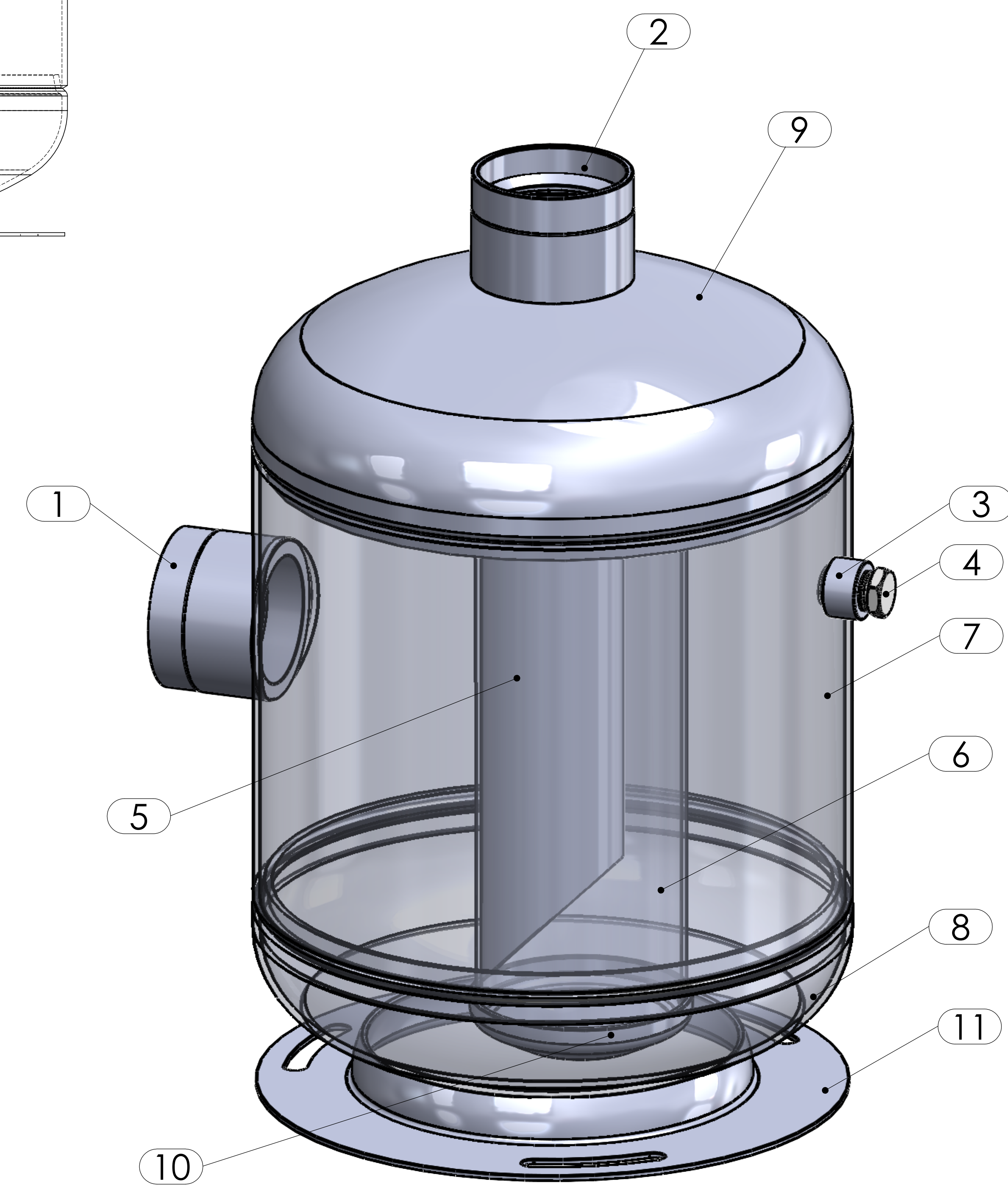
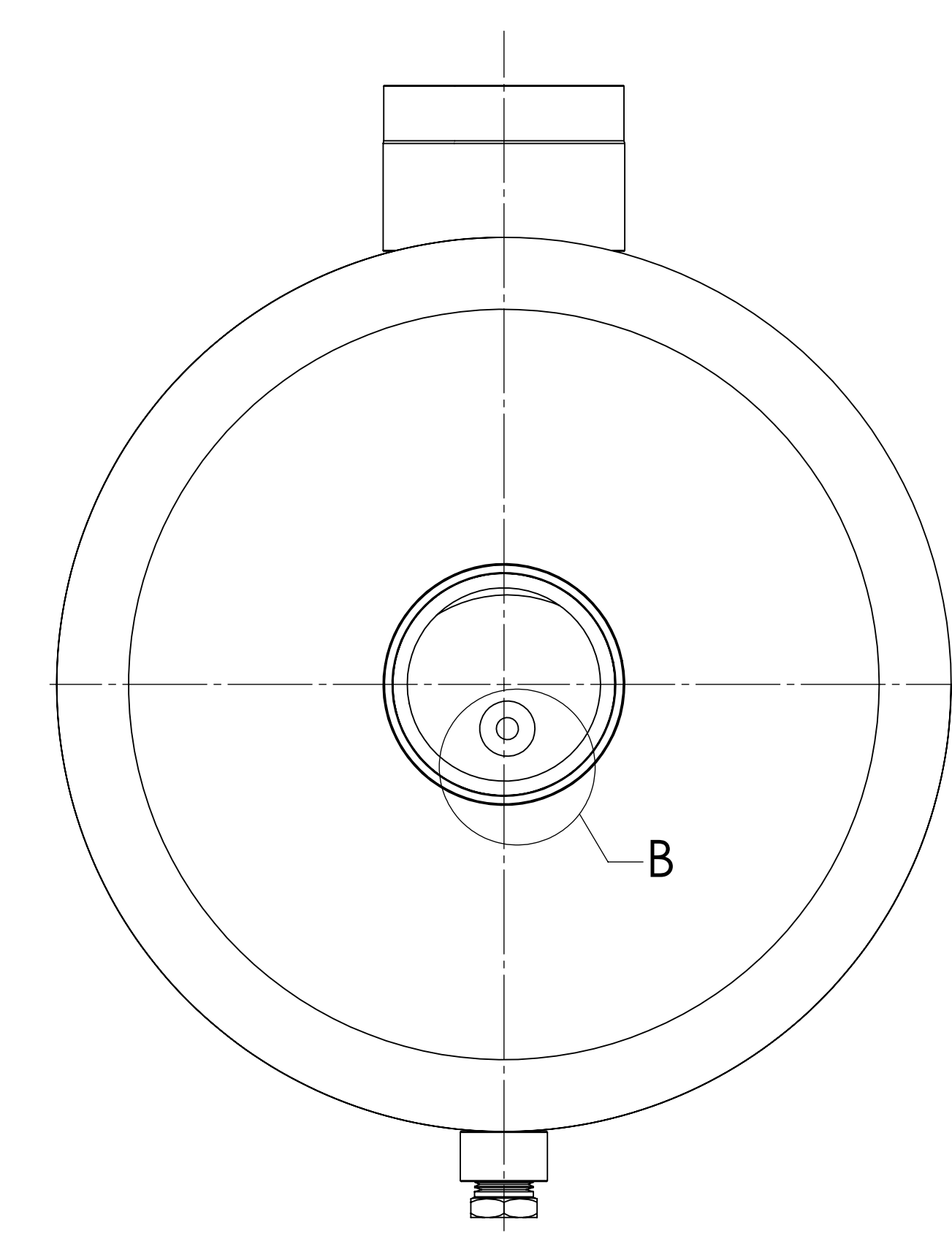
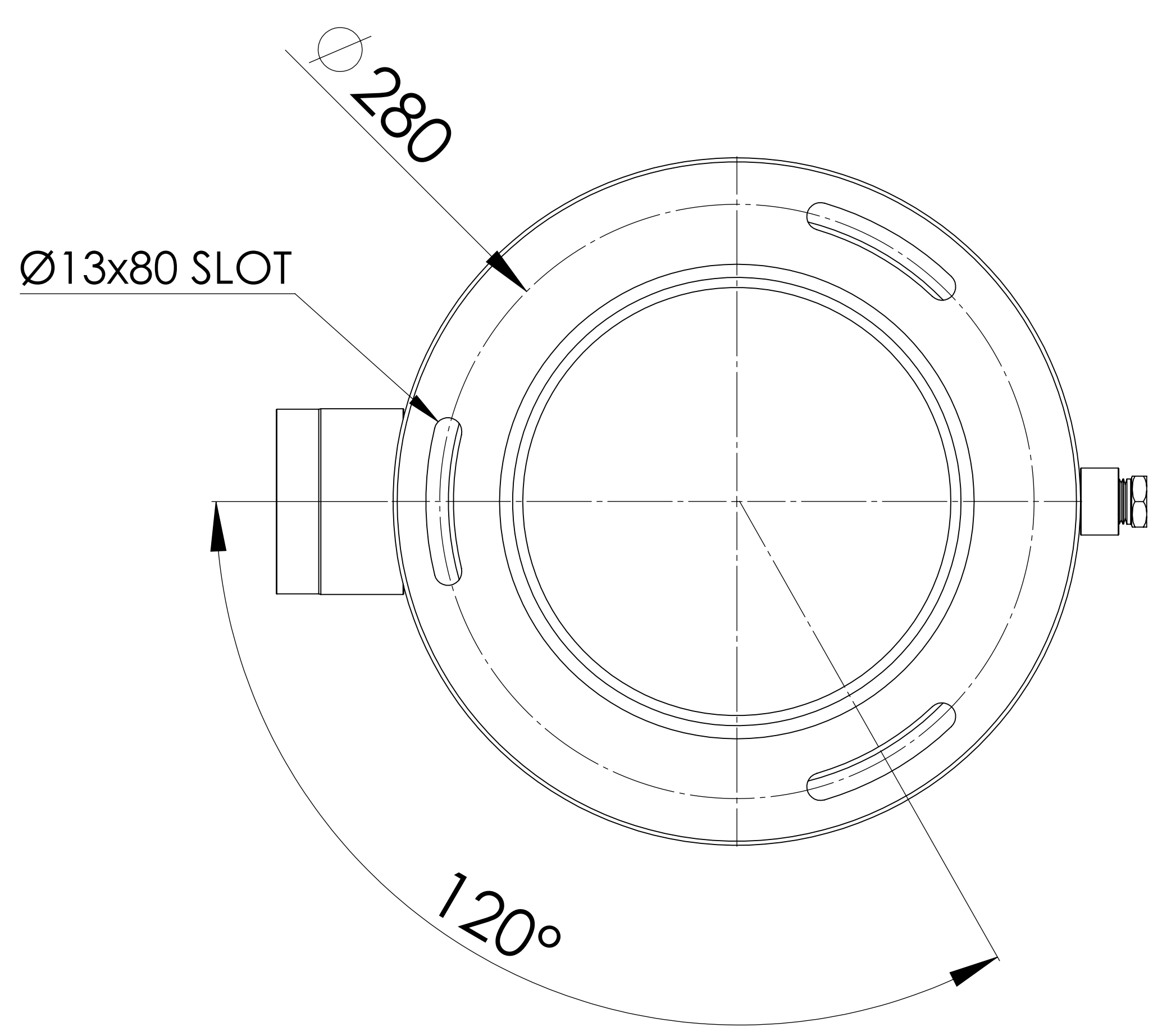
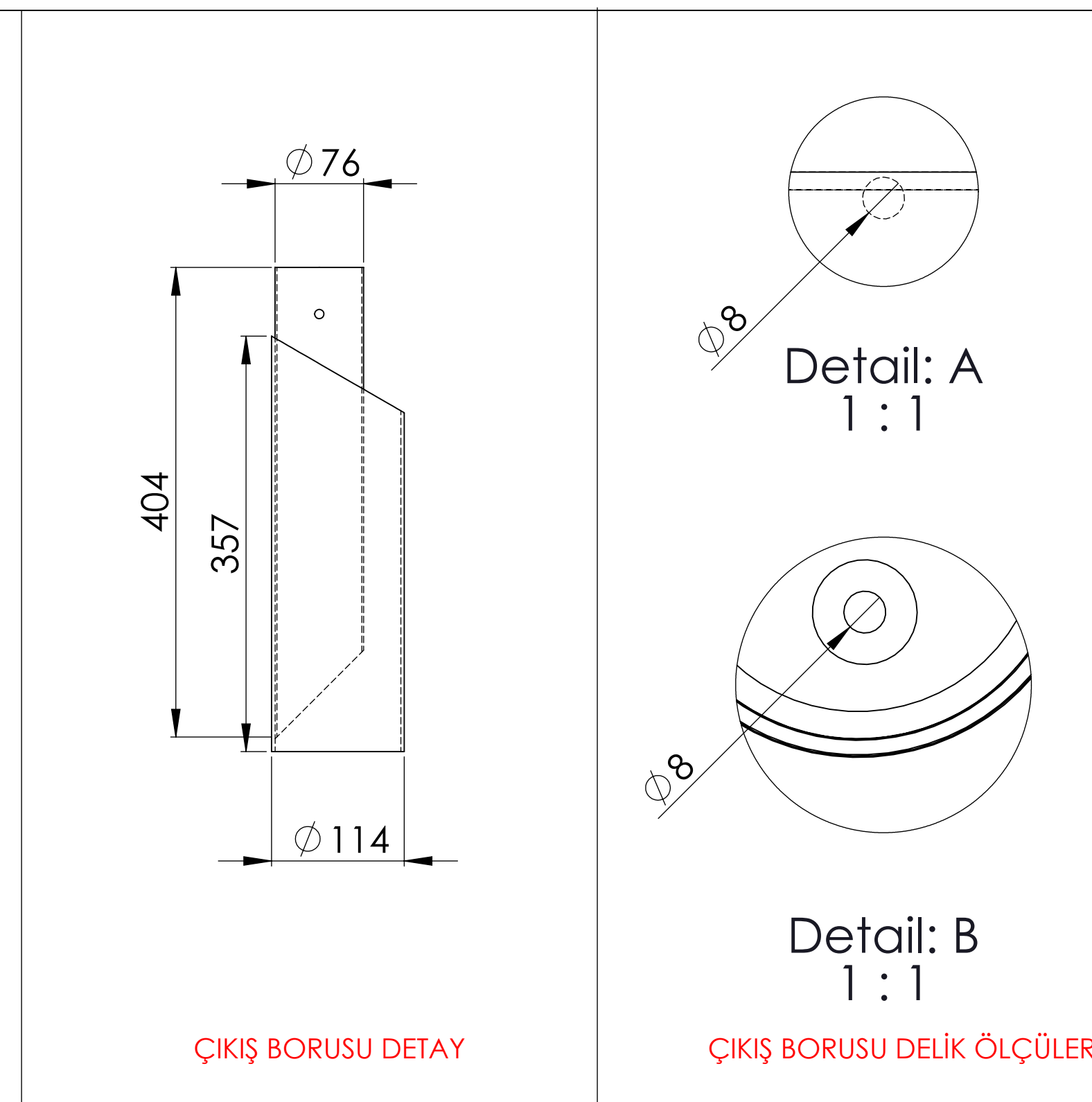
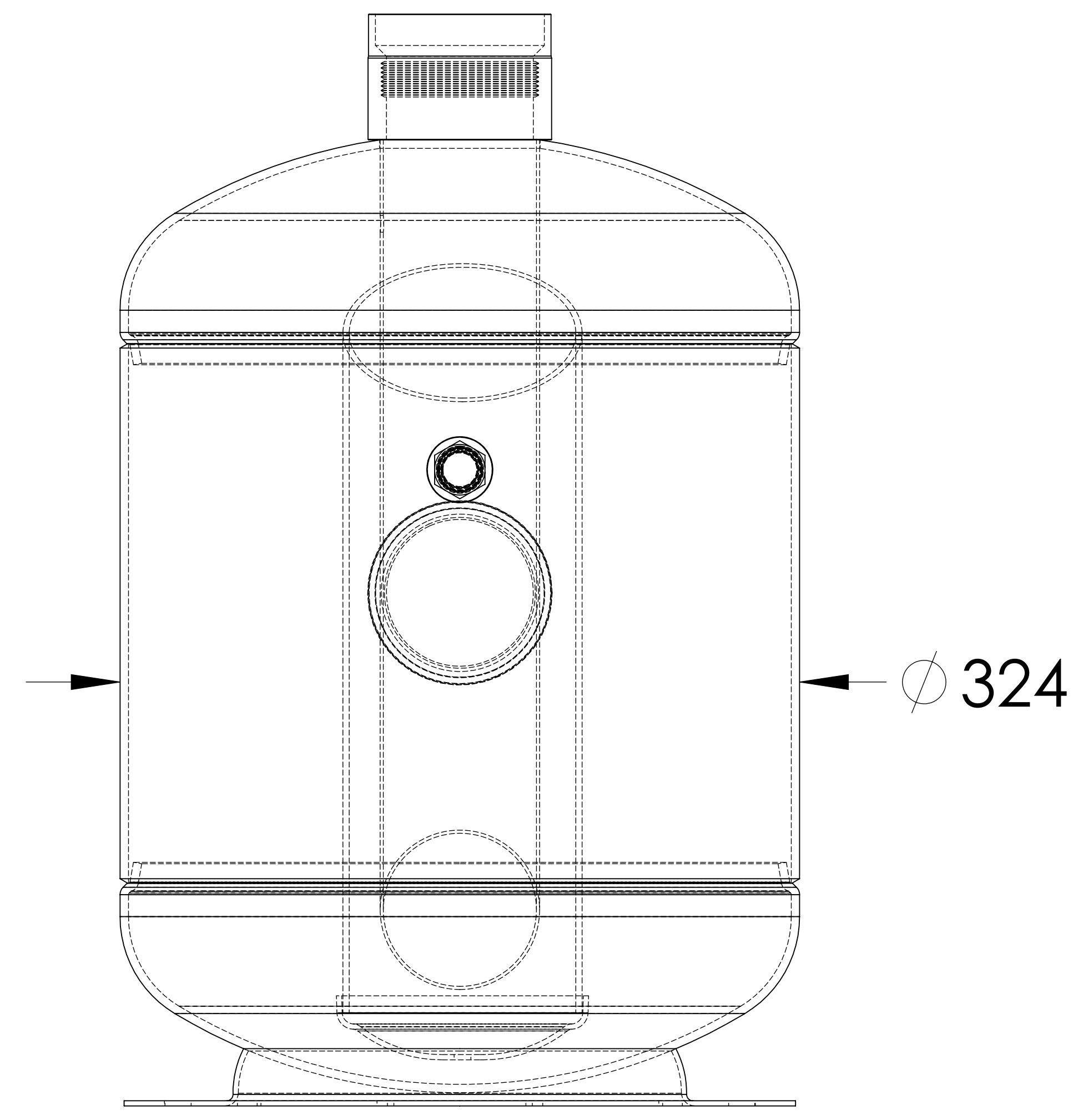
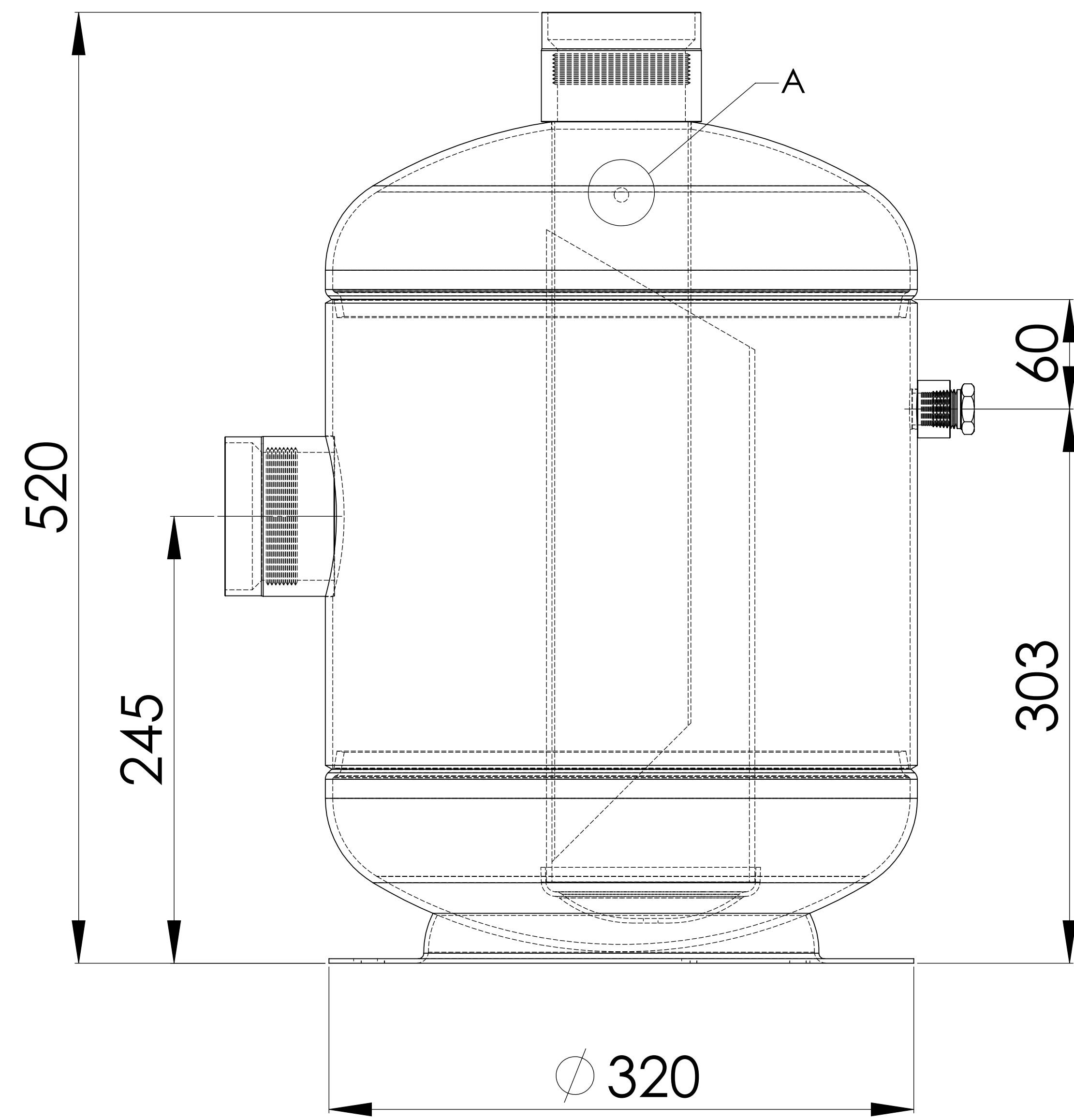
## RELATED DRAWINGS

No	Description	Drawing No
01		
02		



No	Assembly Codes	Qty
1	M005.000354	1

We reserve all rights in this document and in the information contained therein. Reproduction use or disclosure to third parties without express authority is strictly forbidden.



BOTTOM VIEW

TOP VIEW