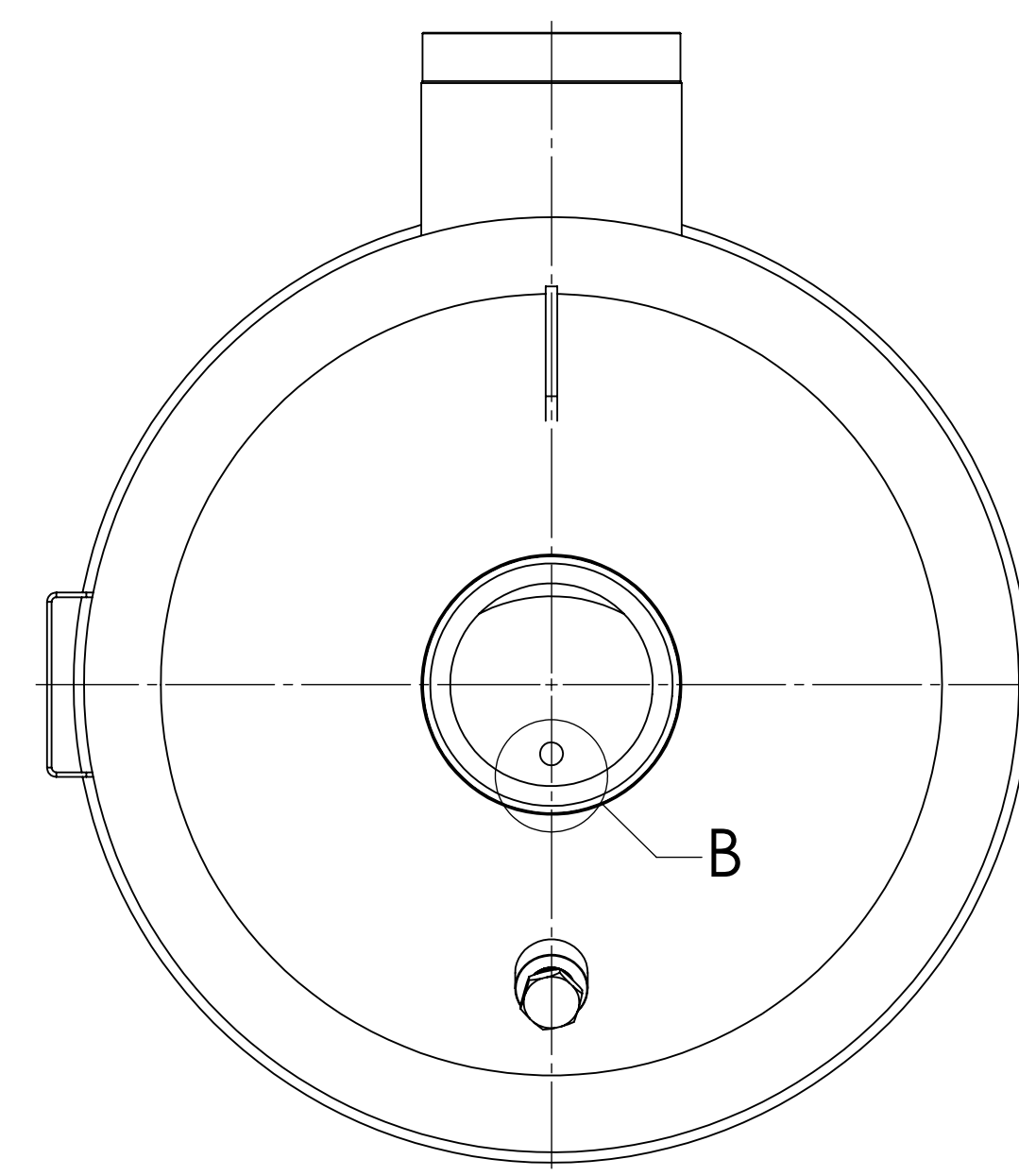
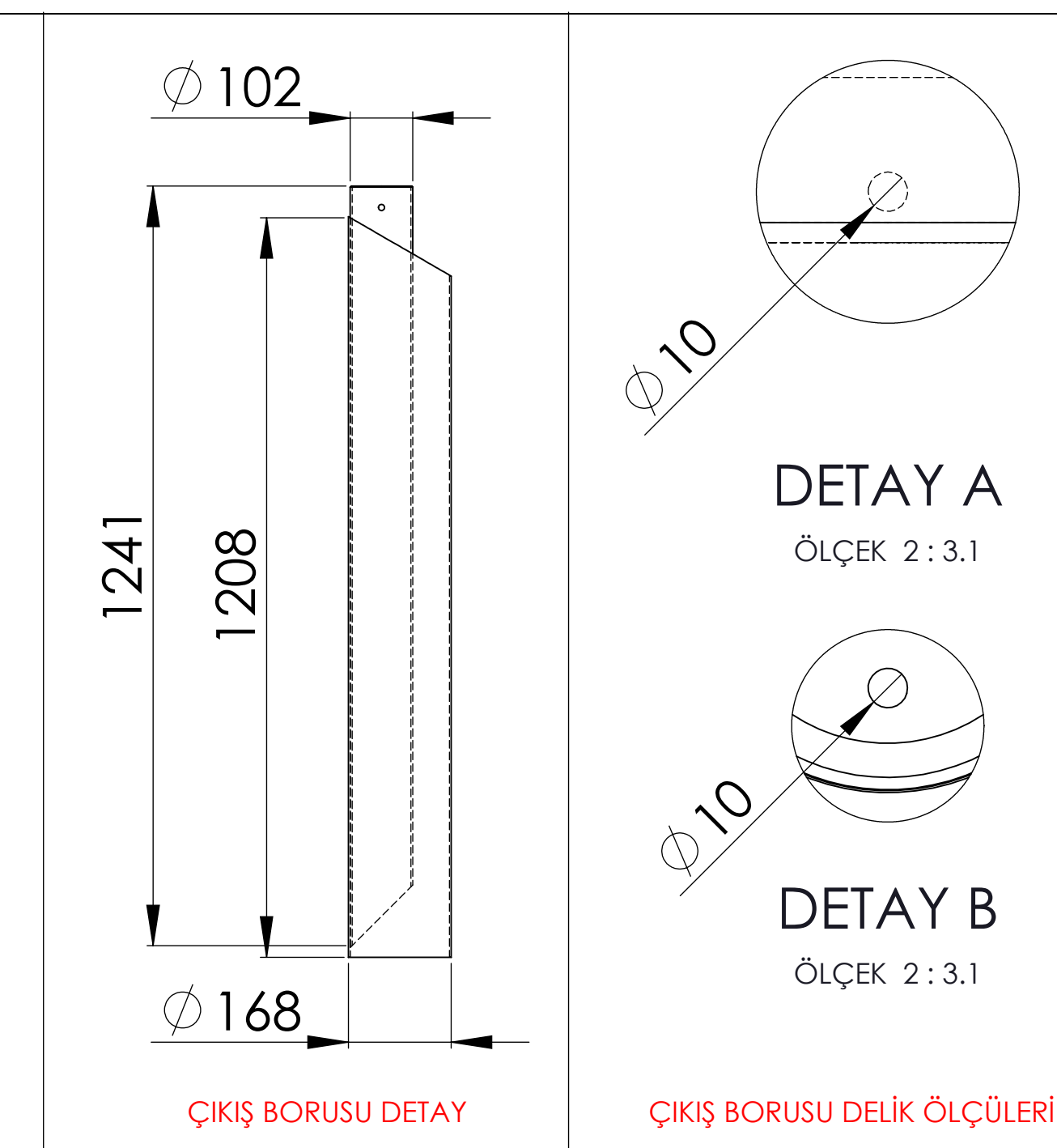


BOTTOM VIEW

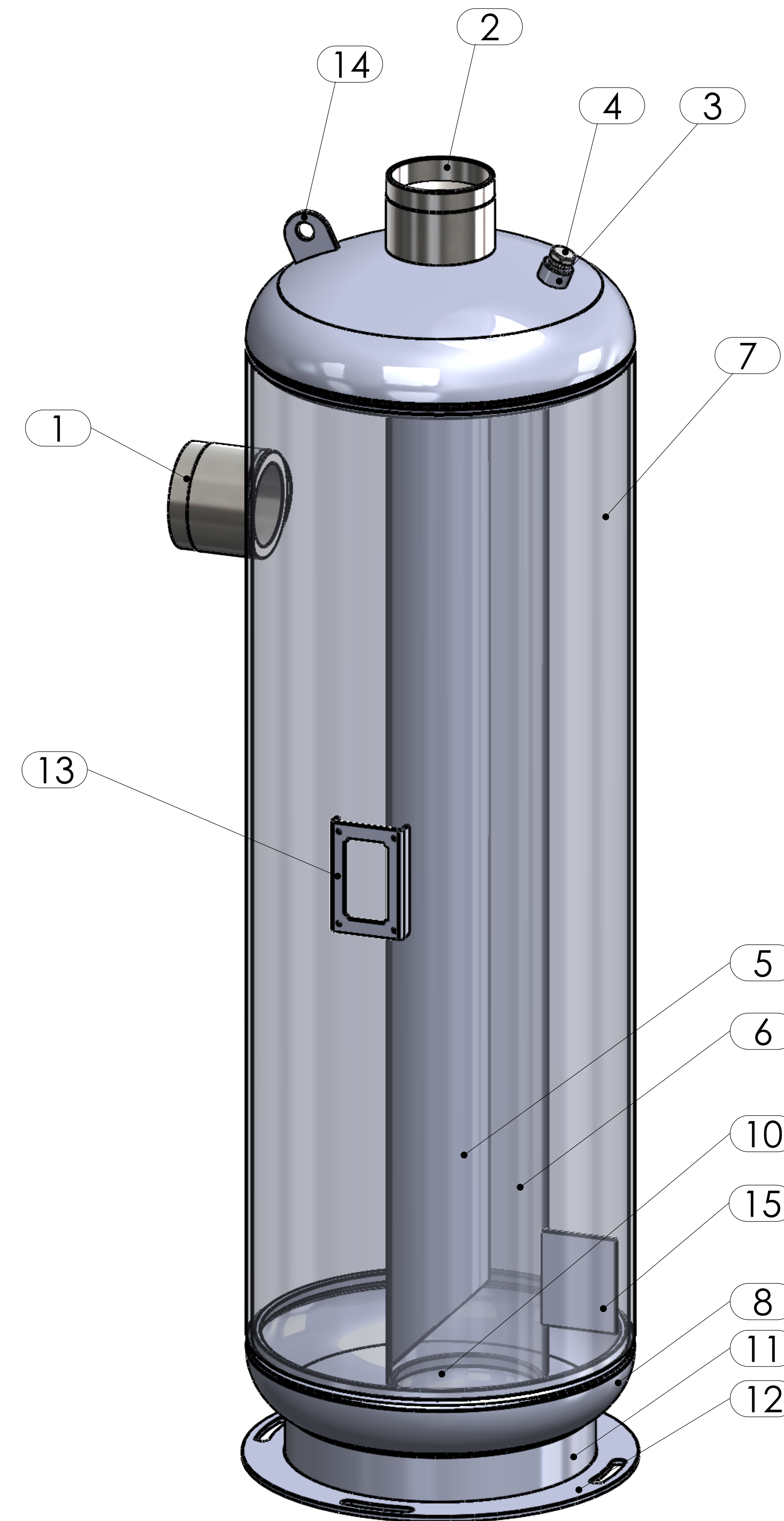


TOP VIEW



ÇIKIŞ BORUSU DETAY

ÇIKIŞ BORUSU DELİK ÖLÇÜLERİ



No	Assembly Codes	Qty
1	M005.000452	1

MATERIAL DATA					
No	Connection	Model	Code	Material	Qty
15	Support Plate	104x83x3	105.500.SLA.104.083	ST37	1

**GÜVEN SOĞUTMA**  
**ÜNİTELERİ SAN. VE TİC. A.Ş.**  
 Add.: Hastane Mah. Hadimköy İstanbul Cd. No:78/1  
 34555, Arnavutköy, İstanbul, TURKEY  
 Tel: +90 212 771 51 12 - 771 51 13  
 Fax: +90 212 771 51 10  
 www.gvn.com.tr



SINCE 1985  
 REFRIGERATION COMPONENTS

<b>GVN STANDART PRODUCT</b>	<b>Customer</b>
<b>SUCTION LINE ACCUMULATORS</b>	<b>Product</b>
<b>SLA.A.45B.105.150.F4</b>	<b>Code</b>
	<b>Customer Code</b>

DESIGN DATA	
Capacity [Lt.]	150 Lt.
Design Pressure [PS]	45 Bar
Pneumatic Test Pressure [PT]	50 Bar
Hydraulic Test Pressure	65 Bar
Design Temperature [TS]	Min.-20C / Max.+130C
Cooler Fluid Type	HFC-CFC-HCFC-R744
Fluid Group	2
Category	CAT IV / H1
Desing Calculation	EN 14276-1/EN 13445-3
Welded Joint Efficiency	0.85
Material Group (Shell / Head)	1.2
Testing Group	3b
Corrasion Allowance	0,5 mm
Ndt	10%
Packaging Size & Weight	00*00*00 & 00 Kg.
Drawed By	Ö.TÜRKER
Approved By	D.GÜL
Date	06.02.2023
Color	RAL 5009

MATERIAL DATA					
No	Connection	Model	Code	Material	Qty
1	Inlet Connection	ODS 4 1/8" H:90	106.060.B17.000.004	E275	1
2	Outlet Connection	ODS 4 1/8" H:80	106.060.B17.000.005	E275	1
3	Safety Valve Conn.	NPT 1/2" H:18	106.060.F04.000.001	E275-ST44	1
4	Blind Plug	NPT 1/2" Plug	106.130.F04.001.001	E275	1
5	Pipe	Ø102x3	204.102.030.SLA.003	E235	1
6	Pipe	Ø168x3	204.168.030.SLA.001	E235	1
7	Shell	Ø406x6 H:1099	204.SLA.045.406.005	P355GH EN 10028-2	1
8	Head - Torispheric	Ø406X6 H:115	101.045.406.001.000	P355GH EN 10028-2	1
9	Head - Torispheric	Ø406X6 H:111	201.045.406.001.003	P355GH EN 10028-2	1
10	Head - Torispheric	Ø168x3 H:50	201.045.168.001.011	EN10028-2 P355GH	1
11	Skirt	Ø324x5 H:50	104.045.H50.415.324	S235	1
12	Base Plate	Ø290x5	105.005.415.001.001	S235	1
13	Label Plate	120x80x2	105.006.002.120.080	DD-13	1
14	Lifting	50x50x5	105.011.MP0.050.050	S235	1

**GENERAL NOTES**

- Max. allowable operating pressure (PS) according to the temperature range:
- 1) Allowable operating temperature : min. -20C° / max. +130C° PS1 = 45 Bar
- 2) Allowable operating temperature : min. -40C° / max. -20C° PS2 = 33 Bar
- Unless otherwise specified dimensions in MM
- Unless otherwise specified do not scale
- Unless otherwise specified tube must be clean&free form burrs inside&outside&suitable for soldering
- Unless otherwise specified do not scale indicated thickness are min. after forming or machining
- Unless otherwise specified dimension tolerances according to EN 113445-4

REVISIONS			
No	Details Of Change	Date	By
01			
02			
03			

RELATED DRAWINGS		
No	Description	Drawing No
01		
02		

We reserve all rights in this document and in the information contained therein. Reproduction use or disclosure to third parties without express authority is strictly forbidden.