

**GÜVEN SOĞUTMA**  
**ÜNİTELERİ SAN. VE TİC. A.Ş.**

Add.: Hastane Mah. Hadimköy İstanbul Cd. No:78/1  
34555, Arnavutköy, İstanbul, TURKEY  
Tel: +90 212 771 51 12 - 771 51 13  
Fax: +90 212 771 51 10  
www.gvn.com.tr



**GVN STANDART PRODUCT**

**Customer**

**SUCTION LINE ACCUMULATORS**

**Product**

**SLA.A.45B.109.200.F4**

**Code**

**Customer Code**

**DESIGN DATA**

|                               |                       |
|-------------------------------|-----------------------|
| Capacity [Lt.]                | 200 Lt.               |
| Design Pressure [PS]          | 45 Bar                |
| Pneumatic Test Pressure [PT]  | 50 Bar                |
| Hydraulic Test Pressure       | 65 Bar                |
| Design Temperature [TS]       | Min.-20C / Max.+130C  |
| Cooler Fluid Type             | HFC-CFC-HCFC-R744     |
| Fluid Group                   | 2                     |
| Category                      | CAT IV / H1           |
| Desing Calculation            | EN 14276-1/EN 13445-3 |
| Welded Joint Efficiency       | 0.85                  |
| Material Group (Shell / Head) | 1.2                   |
| Testing Group                 | 3b                    |
| Corrasion Allowance           | 0,5 mm                |
| Ndt                           | 10%                   |
| Packaging Size & Weight       | 00*00*00 & 00 Kg.     |
| Drawed By                     | Ö.TÜRKER              |
| Approved By                   | D.GÜL                 |
| Date                          | 06.02.2023            |
| Color                         | RAL 5009              |

**MATERIAL DATA**

| No | Connection         | Model           | Code                | Material          | Qty |
|----|--------------------|-----------------|---------------------|-------------------|-----|
| 1  | Inlet Connection   | ODS 4 1/4" H:90 | 106.060.B18.000.006 | E275              | 1   |
| 2  | Outlet Connection  | ODS 4 1/4" H:80 | 106.060.B18.000.005 | E275              | 1   |
| 3  | Safety Valve Conn. | NPT 1/2" H:18   | 106.060.F04.000.001 | E275-ST44         | 1   |
| 4  | Blind Plug         | NPT 1/2" Plug   | 106.130.F04.001.001 | E275              | 1   |
| 5  | Pipe               | Ø102x3          | 204.102.030.SLA.004 | E235              | 1   |
| 6  | Pipe               | Ø168x3          | 204.168.030.SLA.002 | E235              | 1   |
| 7  | Shell              | Ø406x6 H:1509   | 204.SLA.045.406.006 | P355GH EN 10028-2 | 1   |
| 8  | Head - Torispheric | Ø406X6 H:115    | 101.045.406.001.000 | P355GH EN 10028-2 | 1   |
| 9  | Head - Torispheric | Ø406X6 H:111    | 201.045.406.001.003 | P355GH EN 10028-2 | 1   |
| 10 | Head - Torispheric | Ø168x3 H:50     | 201.045.168.001.011 | EN10028-2 P355GH  | 1   |
| 11 | Skirt              | Ø324x5 H:50     | 104.045.H50.415.324 | S235              | 1   |
| 12 | Base Plate         | Ø290x5          | 105.005.415.001.001 | S235              | 1   |
| 13 | Label Plate        | 120x80x2        | 105.006.002.120.080 | DD-13             | 1   |
| 14 | Lifting            | 50x50x5         | 105.011.MP0.050.050 | S235              | 1   |

**GENERAL NOTES**

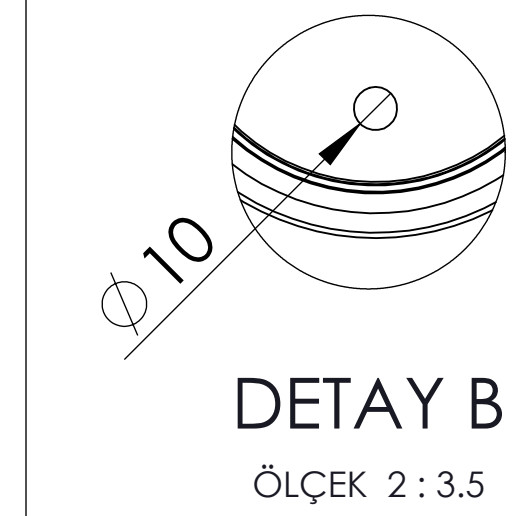
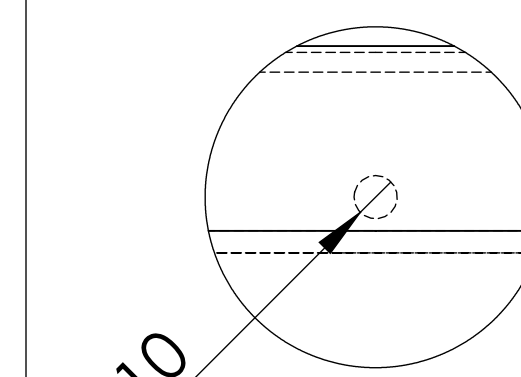
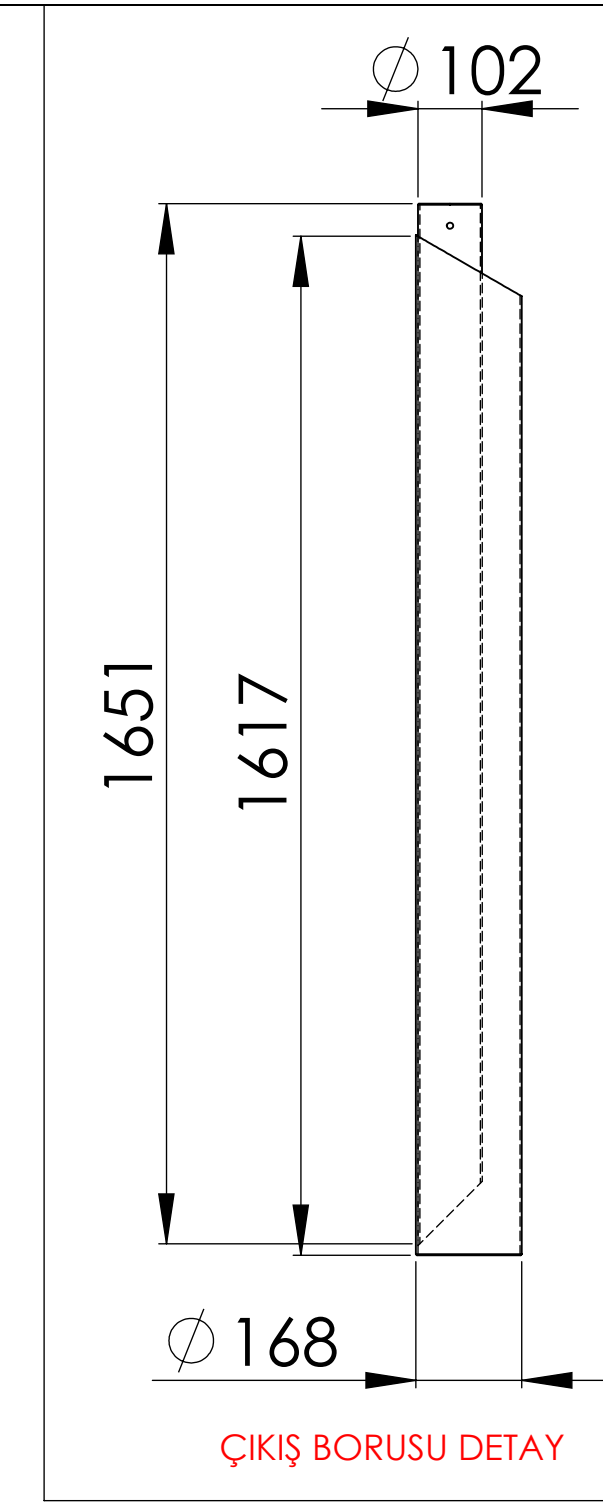
- Max. allowable operating pressure (PS) according to the temperature range;
- 1) Allowable operating temperature : min. -20C° / max. +130C° PS1 = 45 Bar
- 2) Allowable operating temperature : min. -40C° / max. -20C° PS2 = 33 Bar
- Unless otherwise specified dimensions in MM
- Unless otherwise specified do not scale
- Unless otherwise specified tube must be clean&free from burrs inside&outside&suitable for soldering
- Unless otherwise specified do not scale indicated thickness are min. after forming or machining
- Unless otherwise specified dimension tolerances according to EN 113445-4

**REVISIONS**

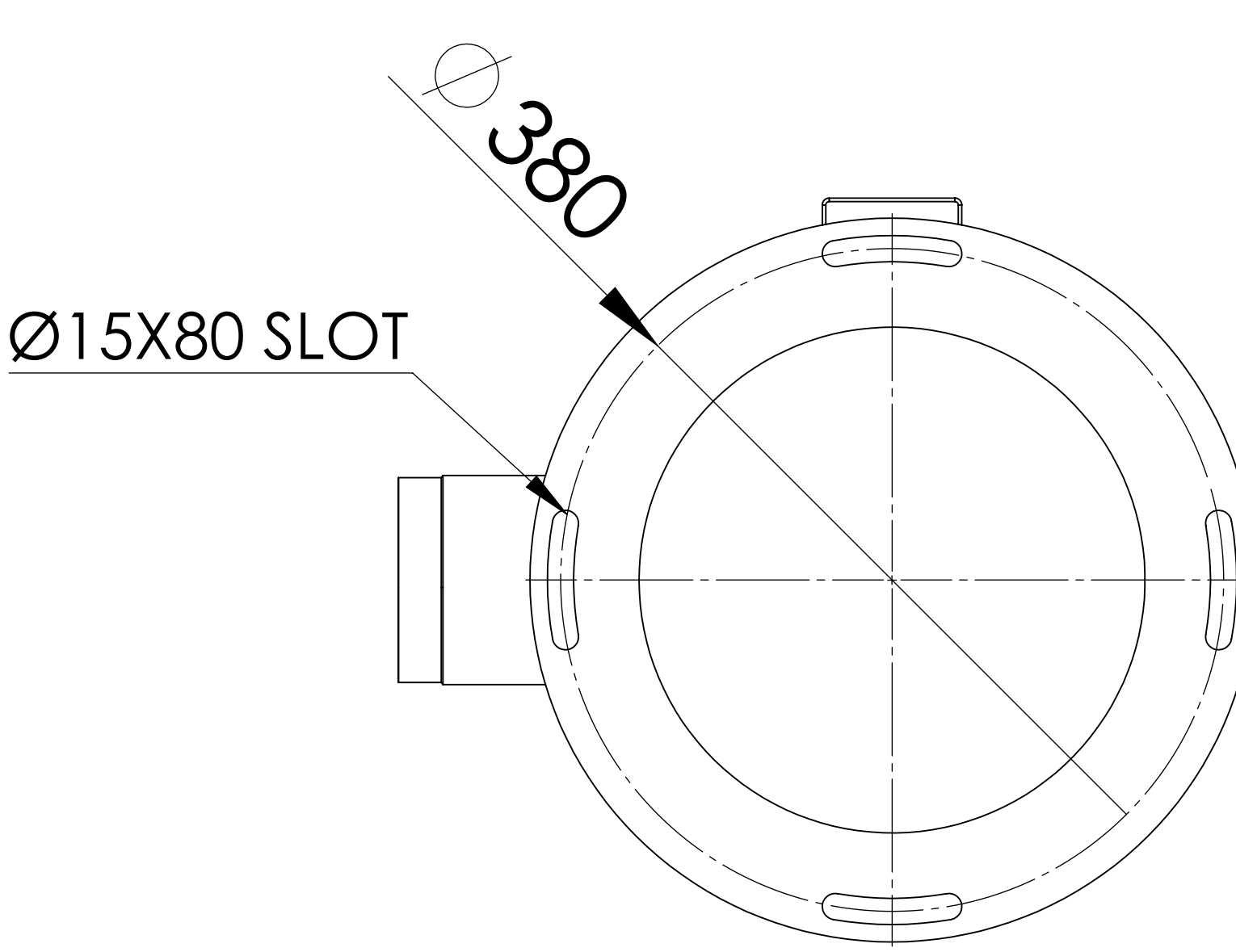
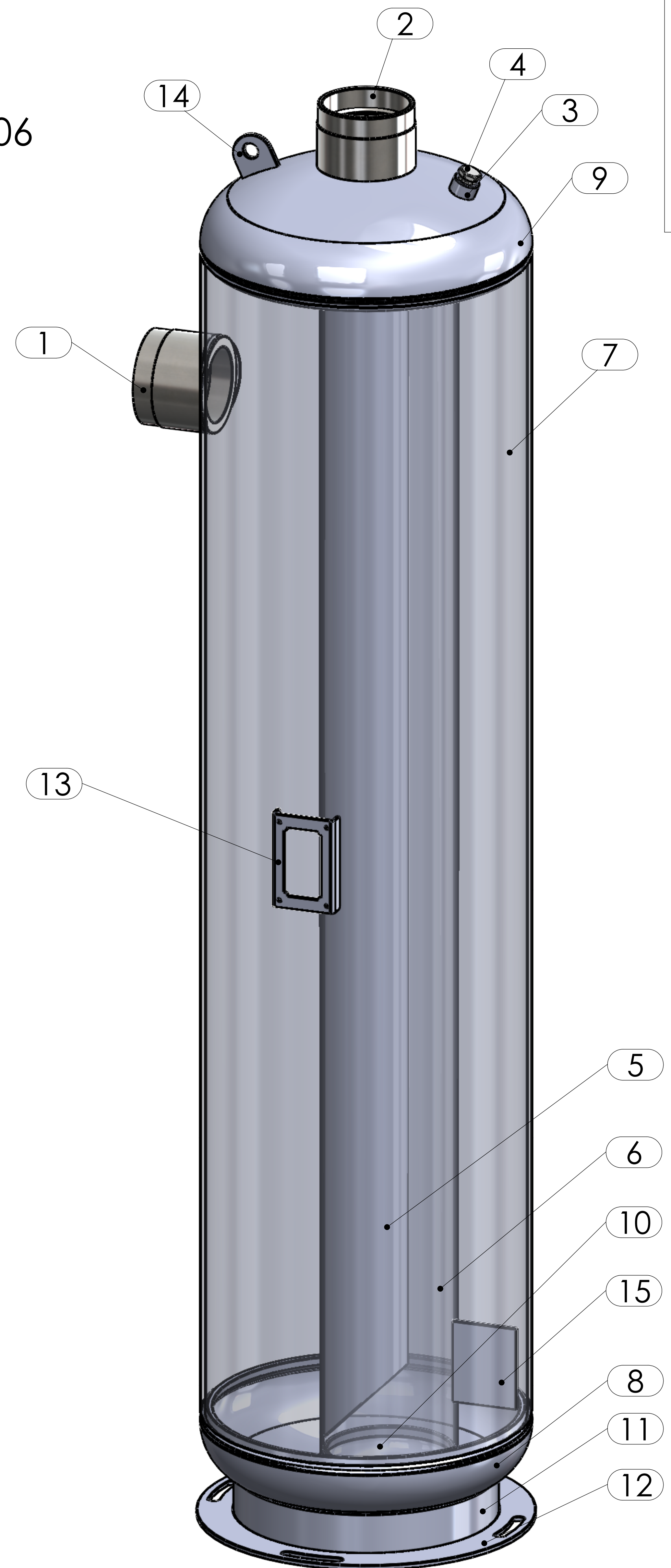
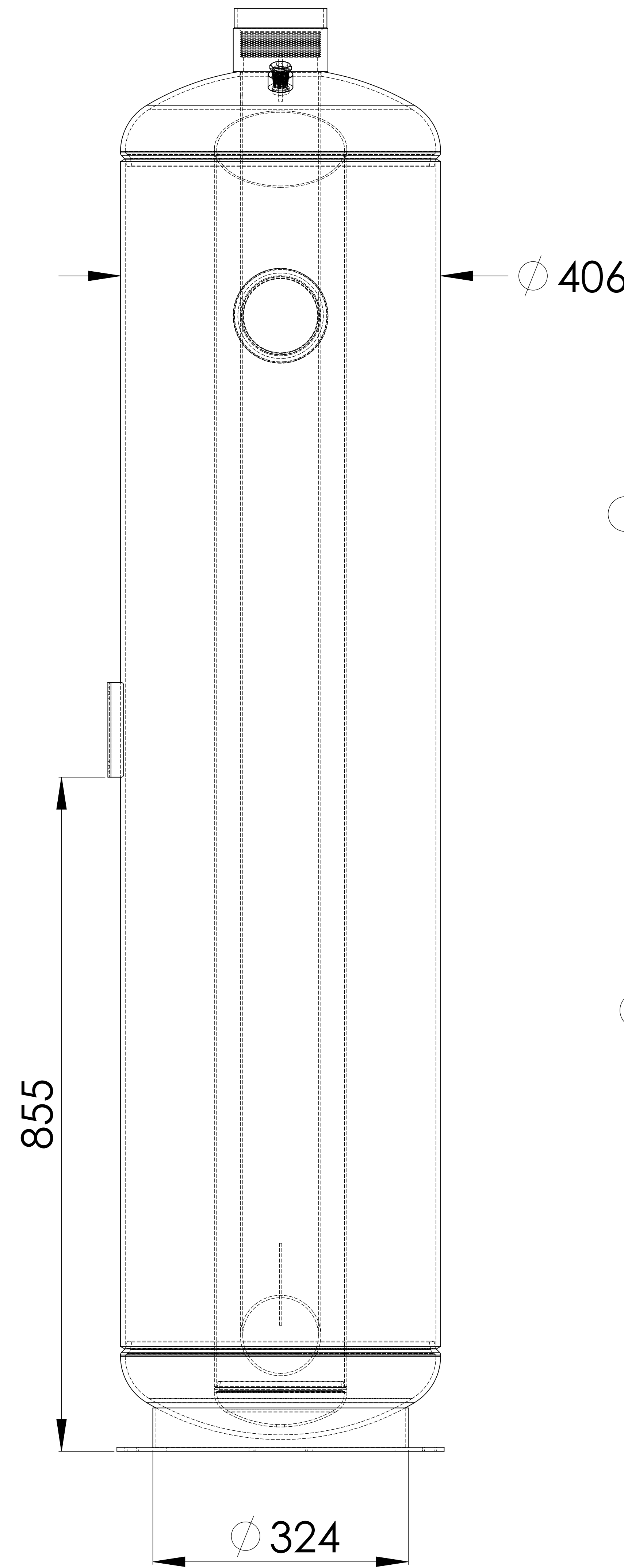
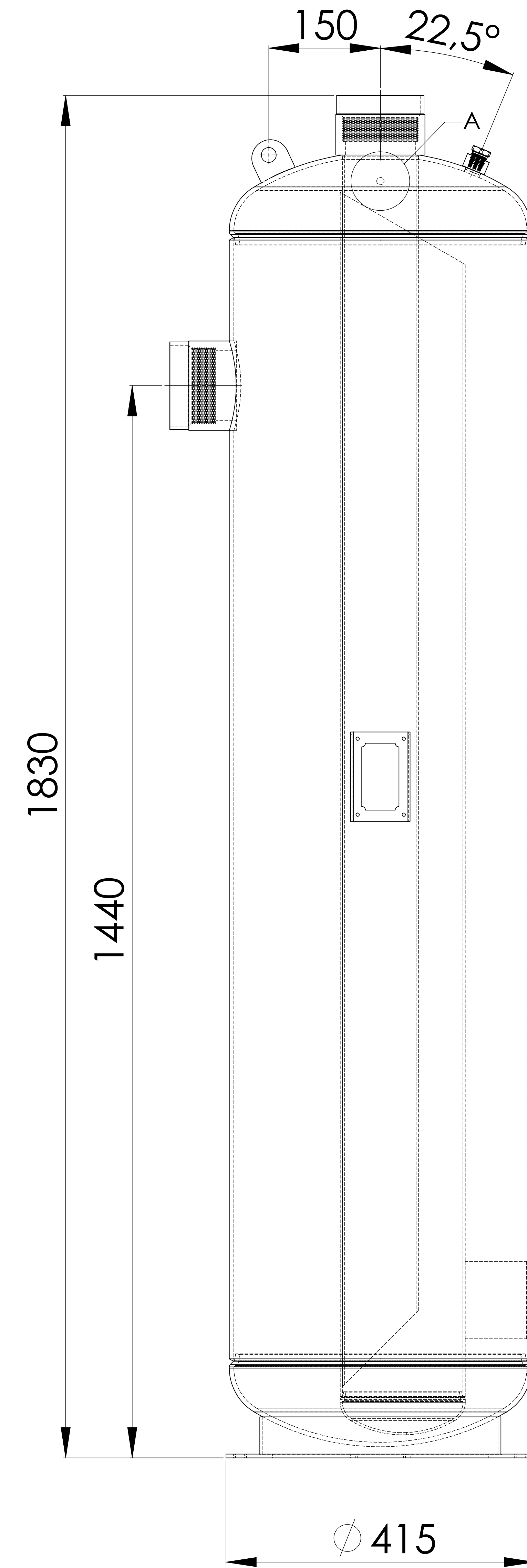
| No | Details Of Change | Date | By |
|----|-------------------|------|----|
| 01 |                   |      |    |
| 02 |                   |      |    |
| 03 |                   |      |    |

**RELATED DRAWINGS**

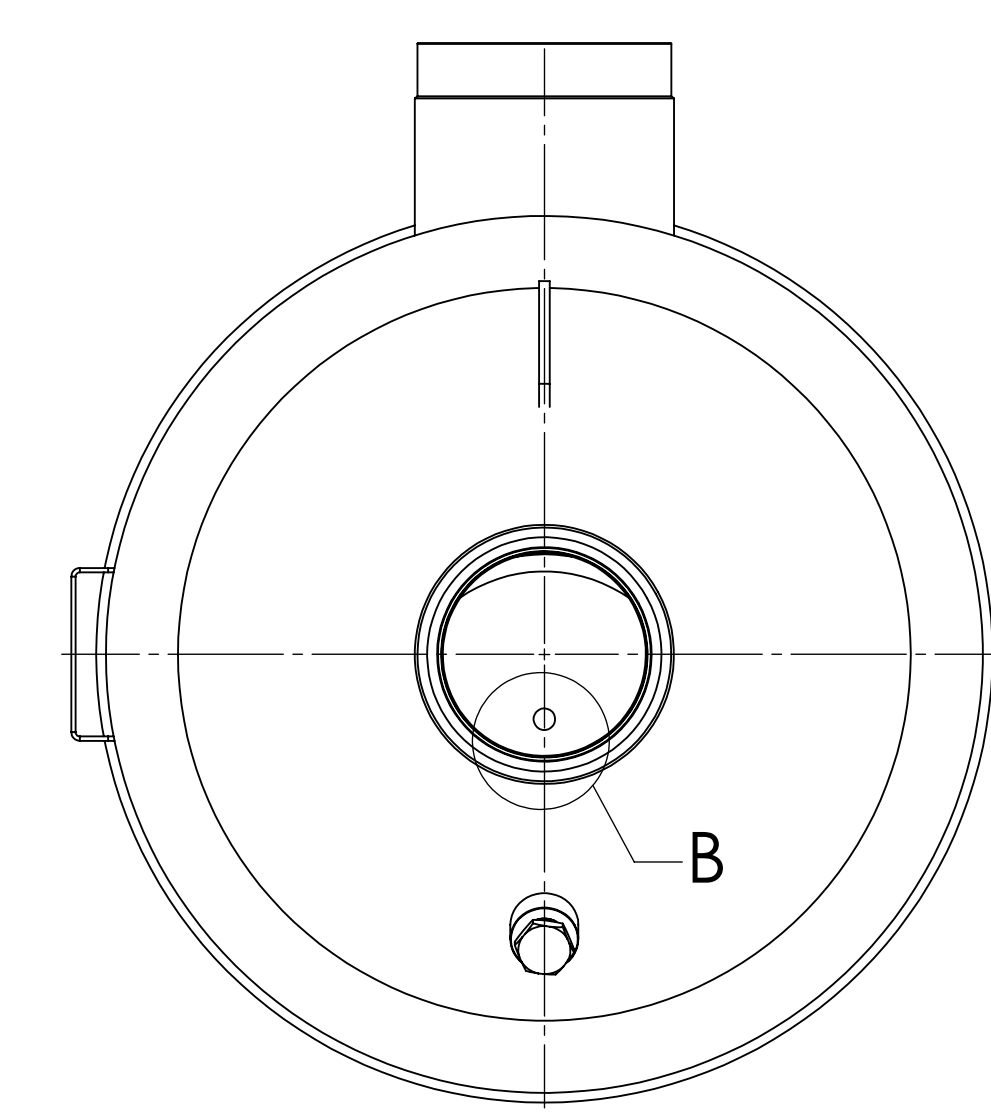
| No | Description | Drawing No |
|----|-------------|------------|
| 01 |             |            |
| 02 |             |            |



ÇIKIŞ BORUSU DELİK ÖLÇÜLERİ



BOTTOM VIEW



TOP VIEW

| No | Assembly Codes | Qty |
|----|----------------|-----|
| 1  | M005.000453    | 1   |

| MATERIAL DATA |               |          |                     |          |     |
|---------------|---------------|----------|---------------------|----------|-----|
| No            | Connection    | Model    | Code                | Material | Qty |
| 15            | Support Plate | 104x83x3 | 105.500.SLA.104.083 | S137     | 1   |



We reserve all rights in this document and in the information contained therein. Reproduction use or disclosure to third parties without express authority is strictly forbidden.