

**GÜVEN SOĞUTMA  
ÜNİTELERİ SAN. VE TİC. A.Ş.**

Add.: Hastane Mah. Hadimköy İstanbul Cd. No:78/1  
34555, Arnavutköy, İstanbul, TÜRKİY  
Tel: +90 212 771 51 12 - 771 51 13  
Fax: +90 212 771 51 10  
www.gvn.com.tr



**GVN STANDART PRODUCT**

**Customer**

**SUCTION LINE ACCUMULATORS**

**Product**

**SLA.A.45B.42.8,1.F4**

**Code**

**Customer Code**

**DESIGN DATA**

Capacity [Lt.]	8,1 Lt.
Design Pressure [PS]	45 Bar
Pneumatic Test Pressure [PT]	50 Bar
Hydraulic Test Pressure	65 Bar
Design Temperature [TS]	Min.-20C / Max.+130C
Cooler Fluid Type	HFC-CFC-HCFC-R744
Fluid Group	2
Category	CAT II / D1
Desing Calculation	EN 14276-1/EN 13445-3
Welded Joint Efficiency	0.85
Material Group (Shell / Head)	1.2
Testing Group	3b
Corrasion Allowance	0,5 mm
Ndt	10%
Packaging Size & Weight	00*00*00 & 00 Kg.
Drawed By	Ö.TÜRKER
Approved By	D.GÜL
Date	20.12.2022
Color	RAL 5009

**MATERIAL DATA**

No	Connection	Model	Code	Material	Qty
1	Inlet Connection	ODS 1 5/8" H:40	106.060.B09.000.001	E275	1
2	Outlet Connection	ODS 1 5/8" H:40	106.060.B09.000.002	E275	1
3	Safety Valve Conn.	NPT 1/2" H:18	106.060.F04.000.001	E275-ST44	1
4	Blind Plug	NPT 1/2" Plug	106.130.F04.001.001	E275	1
5	Pipe	Ø35x1,5	204.035.015.SLA.001	E235	1
6	Pipe	Ø60x1,5	204.060.015.SLA.000	E235	1
7	Shell	Ø168x3 H:334,3	204.SLA.045.168.002	P355NH EN 10217-3	1
8	Head - Torispheric	Ø168x3 H:50	101.045.168.001.000	EN10028-2 P355GH	1
9	Head - Torispheric	Ø168x3 H:50	201.045.168.001.003	EN10028-2 P355GH	1
10	Head Torispheric	Ø66,5x3 H:26	202.033.060.001.000	P355GH EN 10028-2	1
11	Skirt With	Ø162x2,5 H:18	105.004.162.001.001	S235JR	1

**GENERAL NOTES**

-Max. allowable operating pressure (PS) according to the temperature range:  
1) Allowable operating temperature : min. -20C° / max. +130C° PS1 = 45 Bar  
2) Allowable operating temperature : min. -40C° / max. -20C° PS2 = 33 Bar  
-Unless otherwise specified do not scale  
-Unless otherwise specified tube must be clean&free from burrs inside&outside&uitable for soldering  
-Unless otherwise specified do not scale indicated thickness are min. after forming or machining  
-Unless otherwise specified dimension tolerances according to EN 113445-4

**REVISIONS**

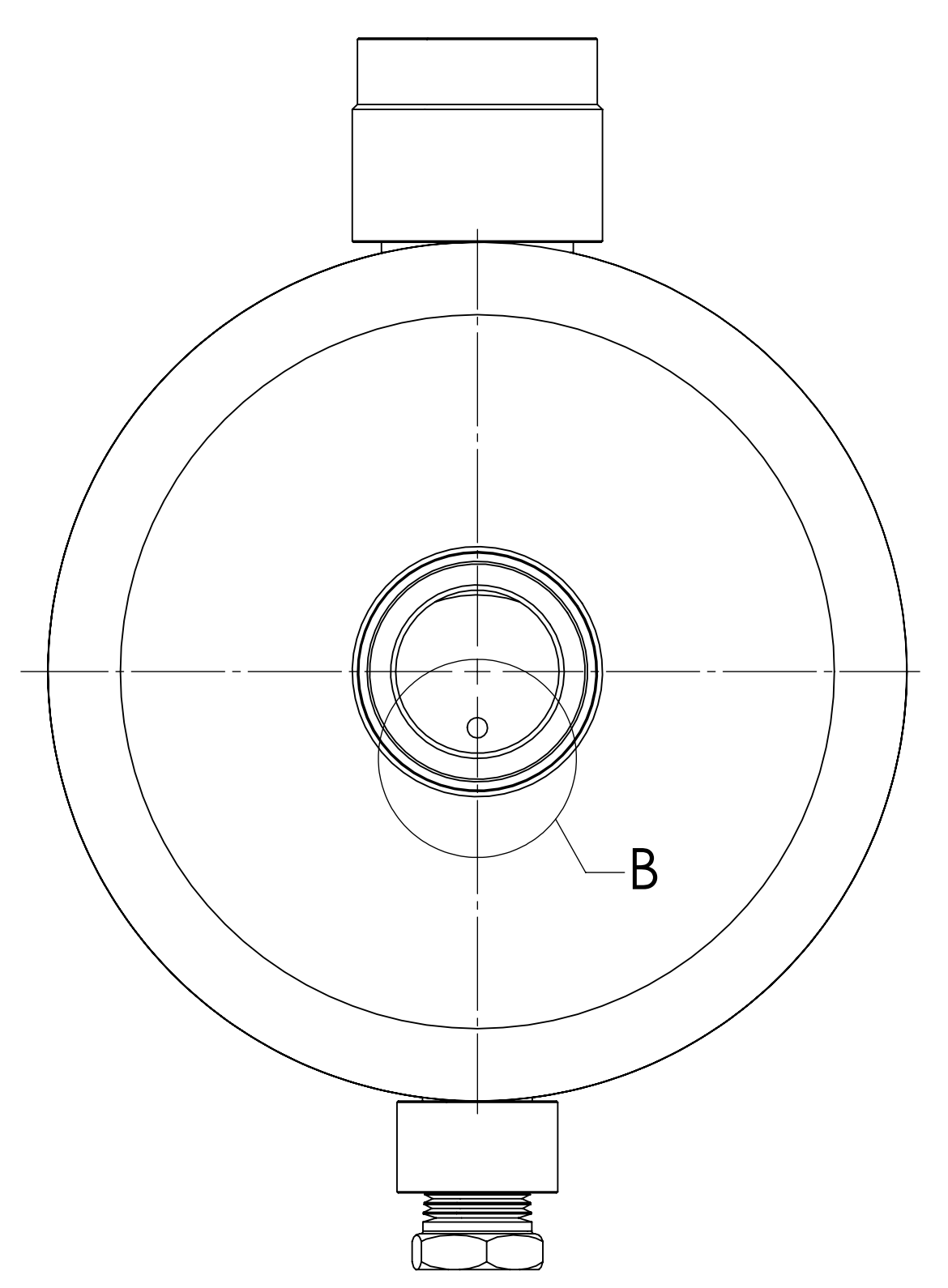
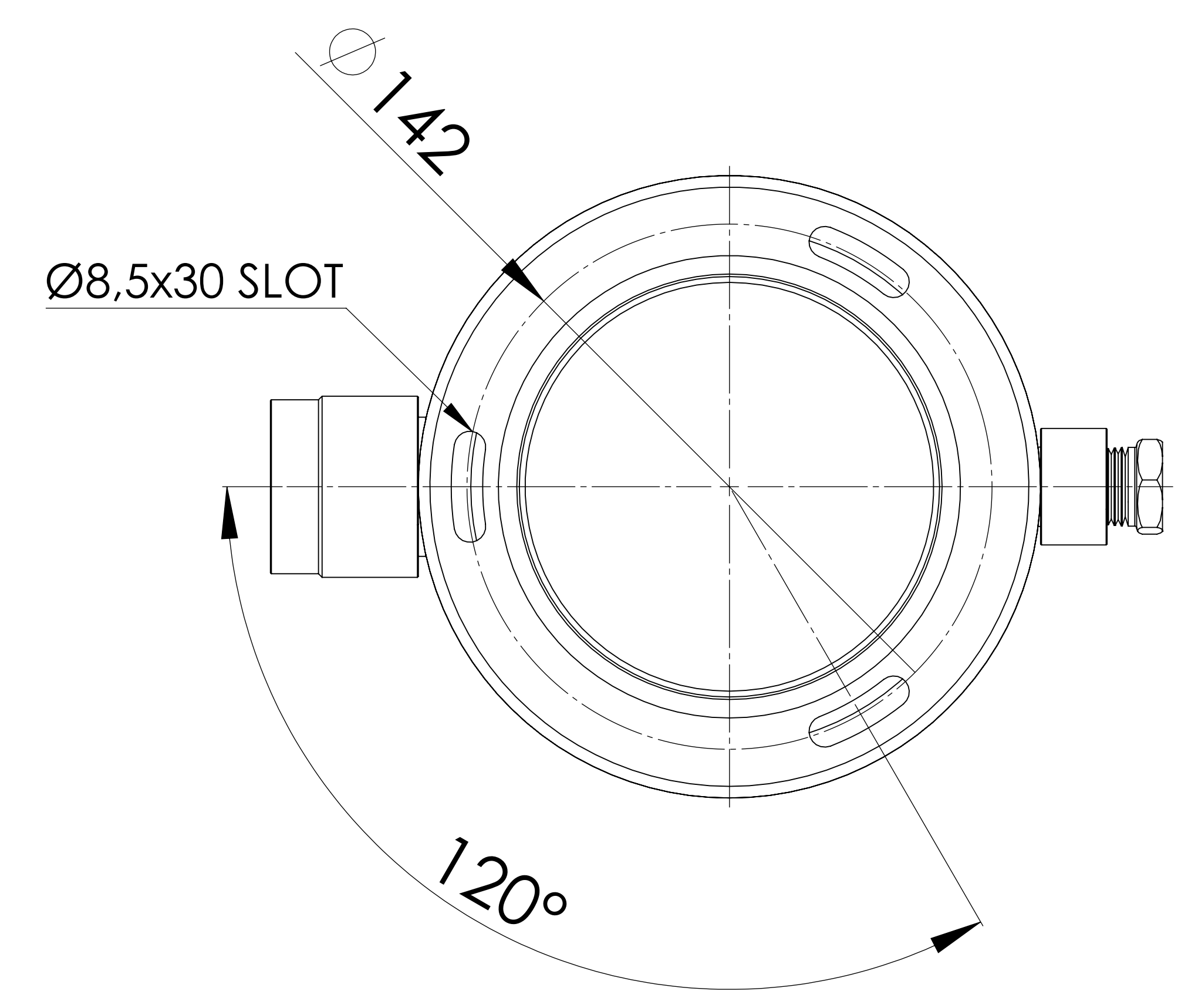
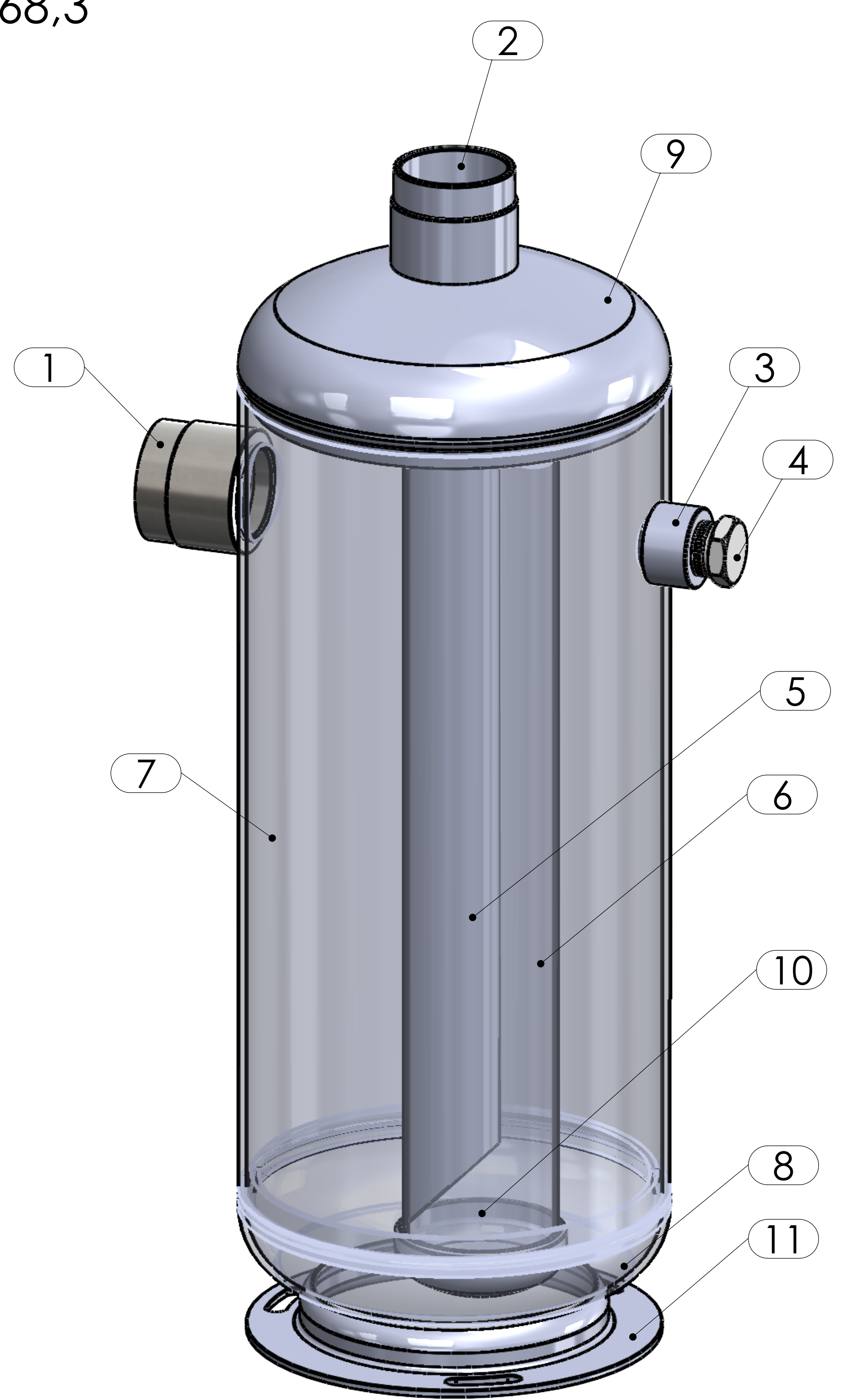
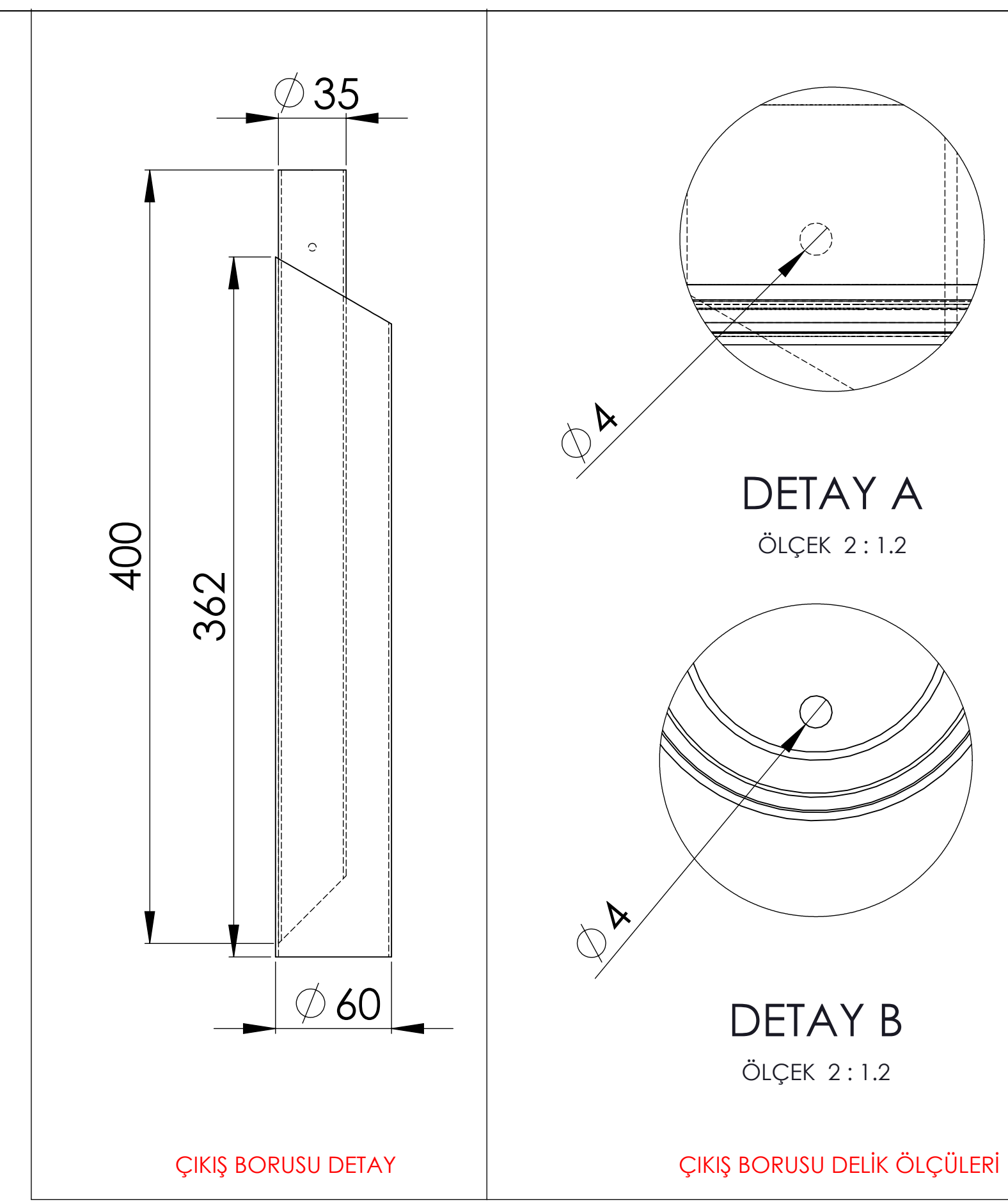
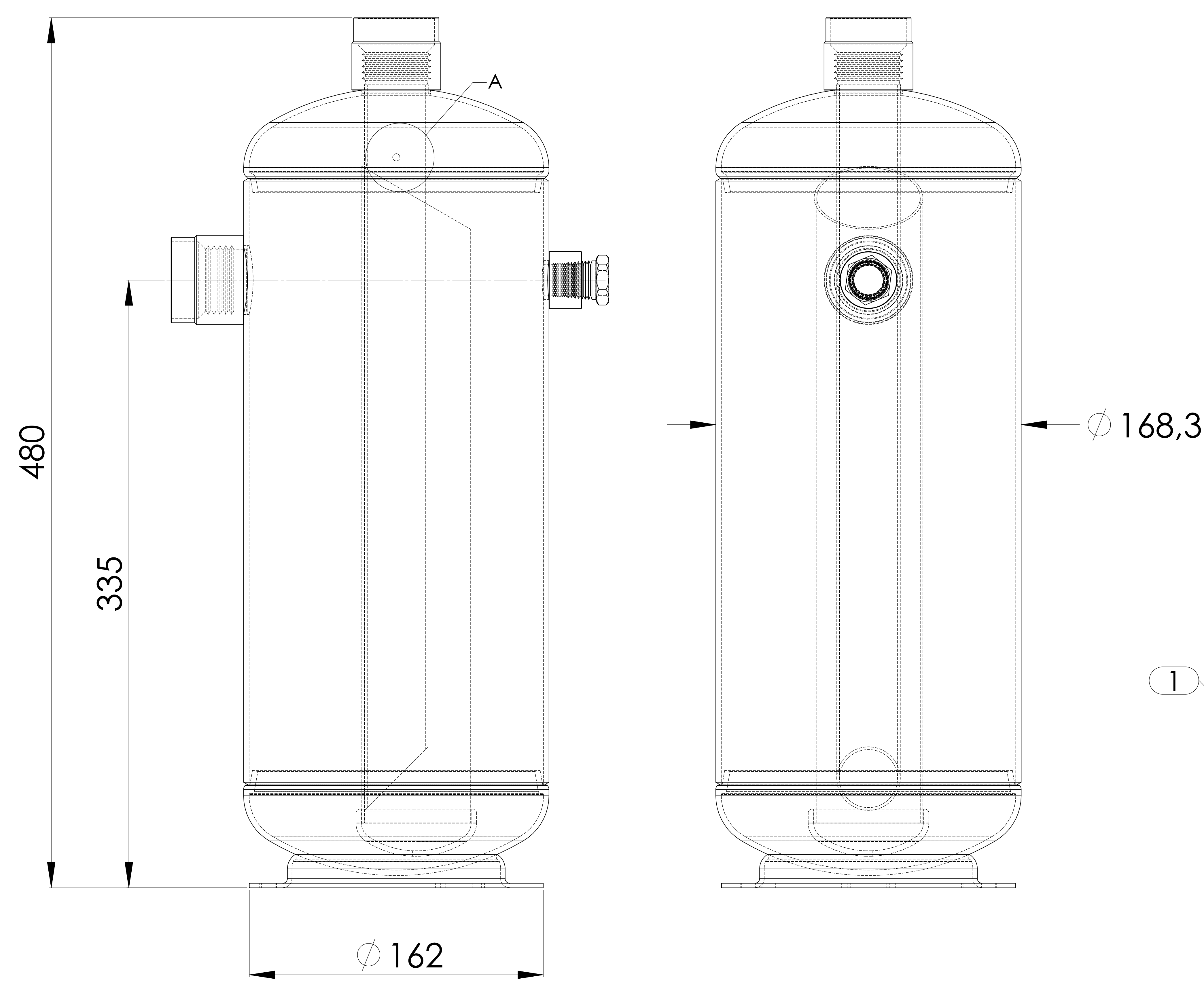
No	Details Of Change	Date	By
01			
02			
03			

**RELATED DRAWINGS**

No	Description	Drawing No
01		
02		



We reserve all rights in this document and in the information contained therein. Reproduction use or disclosure to third parties without express authority is strictly forbidden.



BOTTOM VIEW

TOP VIEW

No	Assembly Codes	Qty
1	M005.000411	1