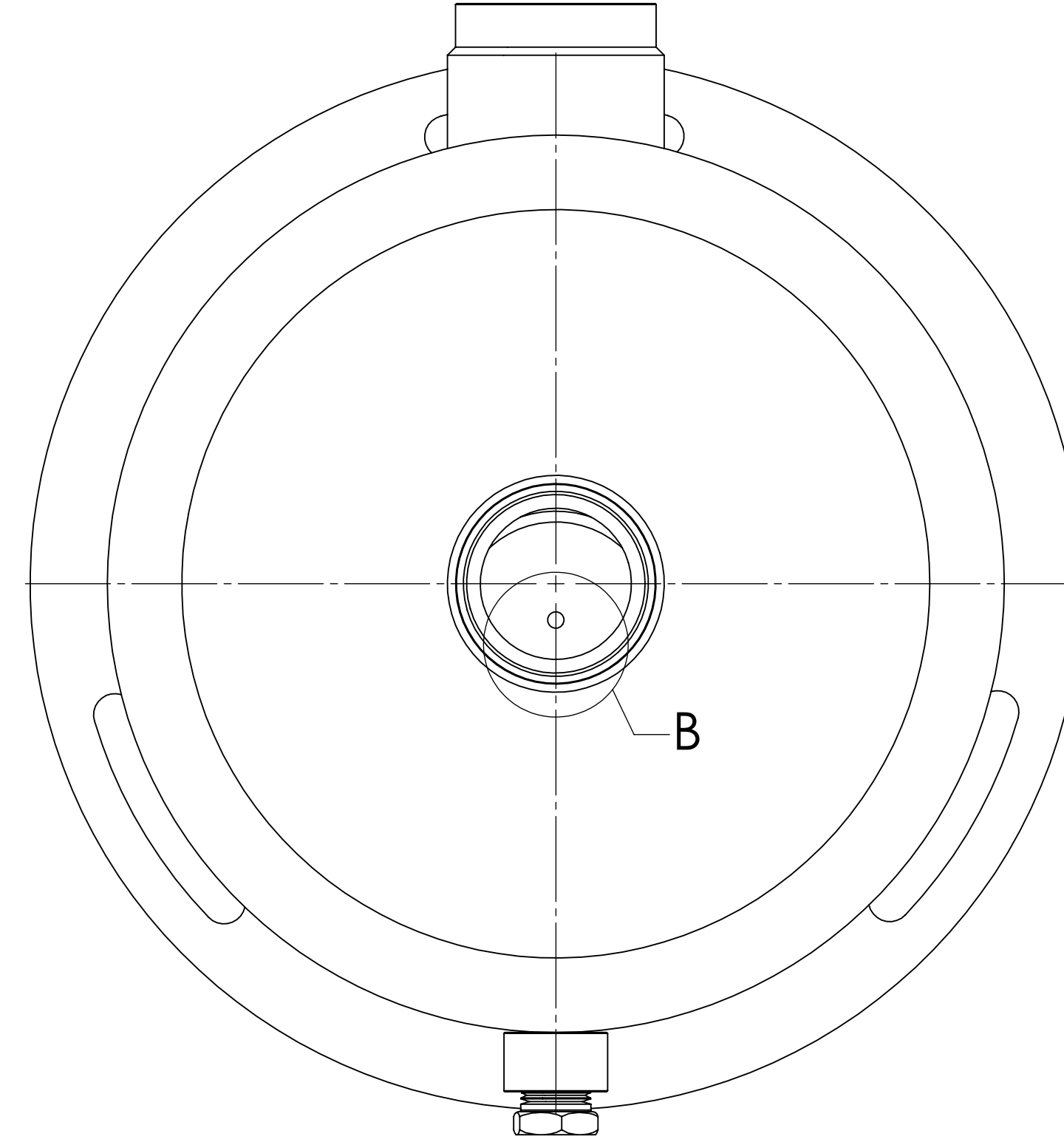
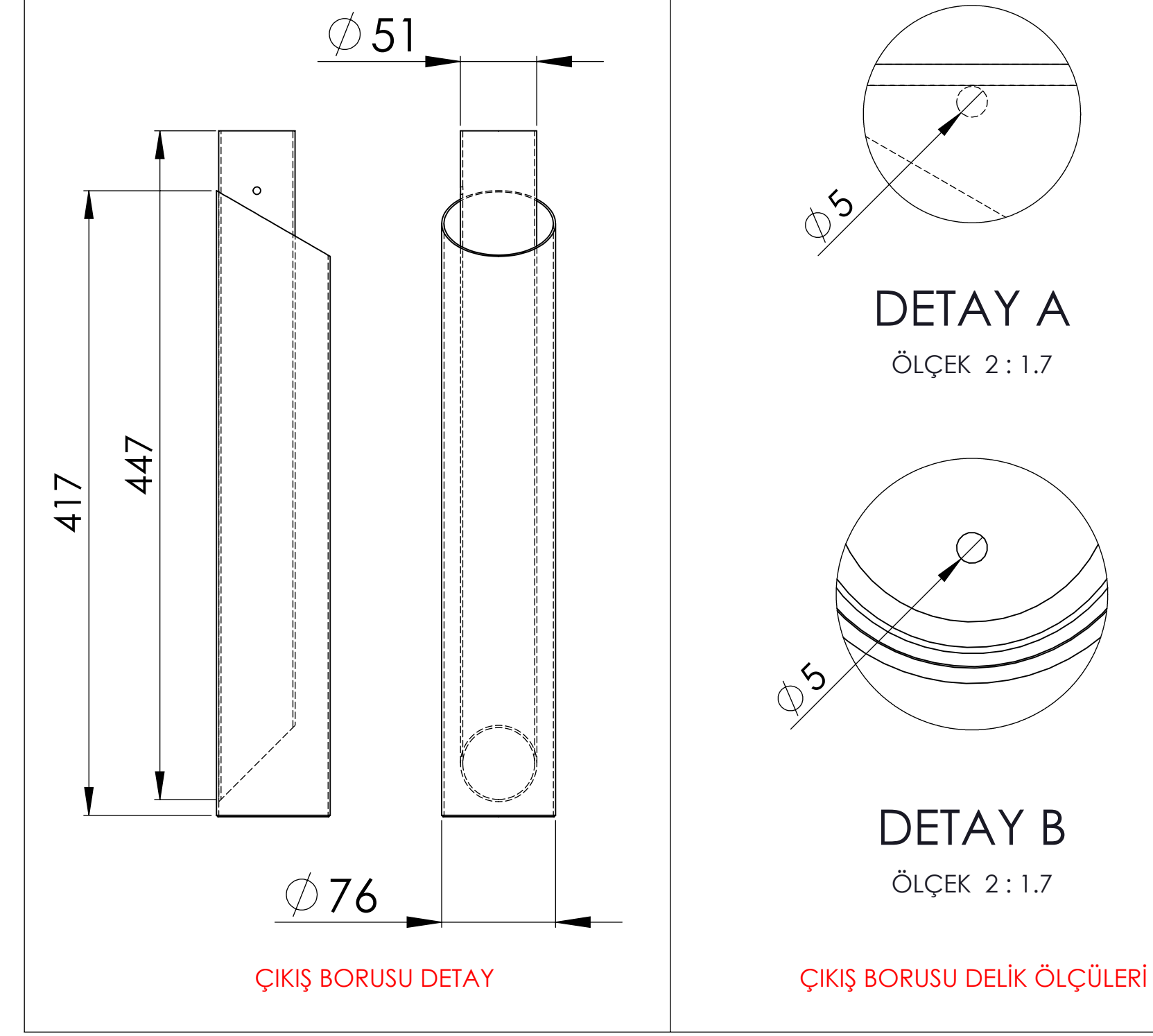


BOTTOM VIEW

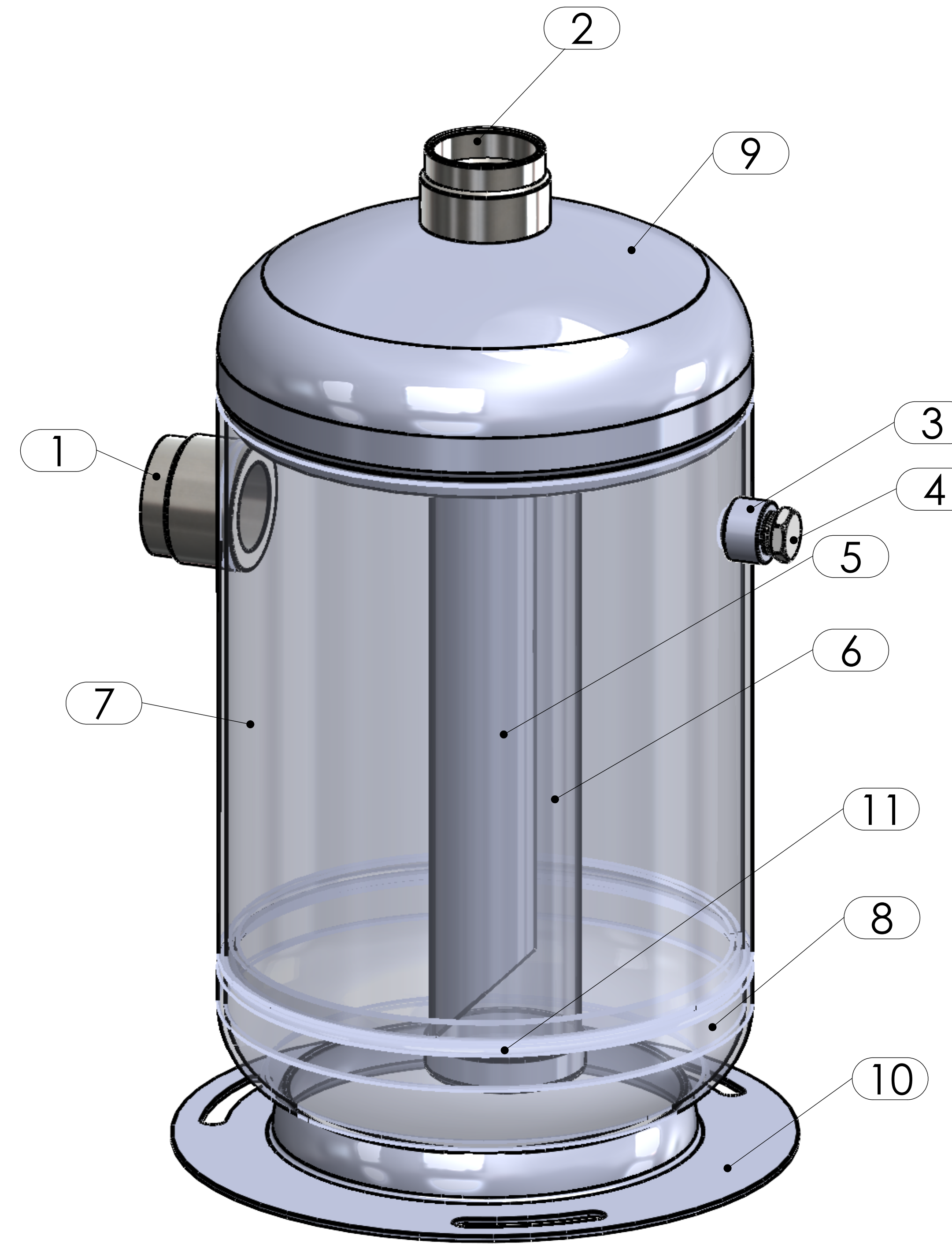


TOP VIEW



ÇIKIŞ BORUSU DETAY

ÇIKIŞ BORUSU DELİK ÖLÇÜLERİ



**GÜVEN SOĞUTMA**  
**ÜNİTELERİ SAN. VE TİC. A.Ş.**  
 Add.: Hastane Mah. Hadimköy İstanbul Cd. No:78/1  
 34555, Arnavutköy, İstanbul, TURKEY  
 Tel: +90 212 771 51 12 - 771 51 13  
 Fax: +90 212 771 51 10  
 www.gvn.com.tr



<b>GVN STANDART PRODUCT</b>	<b>Customer</b>
<b>SUCTION LINE ACCUMULATORS</b>	<b>Product</b>
<b>SLA.A.45B.54.25.F4</b>	<b>Code</b>
	<b>Customer Code</b>

DESIGN DATA	
Capacity [Lt.]	25 Lt.
Design Pressure [PS]	45 Bar
Pneumatic Test Pressure [PT]	50 Bar
Hydraulic Test Pressure	65 Bar
Design Temperature [TS]	Min.-20C / Max.+130C
Cooler Fluid Type	HFC-CFC-HCFC-R744
Fluid Group	2
Category	CAT III / H
Design Calculation	EN 14276-1/EN 13445-3
Welded Joint Efficiency	0.85
Material Group (Shell / Head)	1.2
Testing Group	3b
Corrosion Allowance	0,5 mm
Ndt	10%
Packaging Size & Weight	00*00*00 & 00 Kg.
Drawn By	Ö.TÜRKER
Approved By	D.GÜL
Date	21.12.2022
Color	RAL 5009

MATERIAL DATA					
No	Connection	Model	Code	Material	Qty
1	Inlet Connection	ODS 2 1/8" H:50	106.060.B10.000.008	E275	1
2	Outlet Connection	ODS 2 1/8" H:40	106.060.B10.000.012	E275	1
3	Safety Valve Conn.	NPT 1/2" H:18	106.060.F04.000.001	E275-ST44	1
4	Blind Plug	NPT 1/2" Plug	106.130.F04.001.001	E275	1
5	Pipe	Ø51x1,5 H:448	204.051.015.SLA.004	E235	1
6	Pipe	Ø76x1,5 H:418	204.076.015.SLA.005	E235	1
7	Shell	Ø273x4,5 H:304,5	204.SLA.045.273.001	P355NH EN 10217-3	1
8	Head - Torispheric	Ø273x4 H:95	101.045.273.001.000	P355GH EN10028-2	1
9	Head - Torispheric	Ø273x4 H:95	201.045.273.001.015	P355GH EN10028-2	1
10	Skirt With	Ø320x2,5 H:27	105.004.320.001.001	EN 10111 DD-13	1
11	Cover	Ø76x2,5	201.030.076.001.000	P355GH-EN10028-2	1

**GENERAL NOTES**

- Max. allowable operating pressure (PS) according to the temperature range:
- 1) Allowable operating temperature : min. -20C° / max. +130C° PS1 = 45 Bar
- 2) Allowable operating temperature : min. -40C° / max. -20C° PS2 = 33 Bar
- Unless otherwise specified dimensions in MM
- Unless otherwise specified do not scale
- Unless otherwise specified tube must be clean&free from burrs inside&outside&suitable for soldering
- Unless otherwise specified do not scale indicated thickness are min. after forming or machining
- Unless otherwise specified dimension tolerances according to EN 113445-4

REVISIONS			
No	Details Of Change	Date	By
01			
02			
03			

RELATED DRAWINGS		
No	Description	Drawing No
01		
02		

No	Assembly Codes	Qty
1	M005.000414	1



We reserve all rights in this document and in the information contained therein. Reproduction use or disclosure to third parties without express authority is strictly forbidden.