

# GÜVEN SOĞUTMA ÜNİTELERİ SAN. VE TİC. A.Ş.

Add.: Hastane Mah. Hadimköy İstanbul Cd. No:78/1  
34555, Arnavutköy, İstanbul, TURKEY  
Tel: +90 212 771 51 12 - 771 51 13  
Fax: +90 212 771 51 10  
www.gvn.com.tr



**GVN STANDART PRODUCT**

**Customer**

**SUCTION LINE ACCUMULATORS**

**Product**

**SLA.A.45B.92.32.F4**

**Code**

**Customer Code**

## DESIGN DATA

Capacity [Lt.]	32 Lt.
Design Pressure [PS]	45 Bar
Pneumatic Test Pressure [PT]	50 Bar
Hydraulic Test Pressure	65 Bar
Design Temperature [TS]	Min.-20C / Max.+130C
Cooler Fluid Type	HFC-CFC-HCFC-R744
Fluid Group	2
Category	CAT III / H
Desing Calculation	EN 14276-1/EN 13445-3
Welded Joint Efficiency	0.85
Material Group (Shell / Head)	1.2
Testing Group	3b
Corrasion Allowance	0,5 mm
Ndt	10%
Packaging Size & Weight	00*00*00 & 00 Kg.
Drawed By	Ö.TÜRKER
Approved By	D.GÜL
Date	26.12.2022
Color	RAL 5009

## MATERIAL DATA

No	Connection	Model	Code	Material	Qty
1	Inlet Connection	ODS 3 5/8" H:70	106.060.B15.000.006	E275	1
2	Outlet Connection	ODS 3 5/8" H:60	106.060.B15.000.007	E275	1
3	Safety Valve Conn.	NPT 1/2" H:18	106.060.F04.000.001	E275-ST44	1
4	Blind Plug	NPT 1/2" Plug	106.130.F04.001.001	E275	1
5	Pipe	Ø89x2	204.089.020.SLA.001	E235	1
6	Pipe	Ø140x3	204.140.030.SLA.001	E235	1
7	Shell	Ø323,9x5 H:248	204.SLA.045.324.002	P355NH EN 10217-3	1
8	Head - Torispheric	Ø324x5 H:105	101.045.324.001.000	P355GH EN 10028-2	1
9	Head - Torispheric	Ø324x5 H:101	201.045.324.001.004	P355GH EN 10028-2	1
10	Head - Torispheric	Ø140x3 H:45	201.060.140.001.009	EN10028-2 P355GH	1
11	Skirt With	Ø320x2,5 H:27	105.004.320.001.001	EN 10111 DD-13	1

## GENERAL NOTES

- Max. allowable operating pressure (PS) according to the temperature range;
- 1) Allowable operating temperature : min. -20C° / max. +130C° PS1 = 45 Bar
- 2) Allowable operating temperature : min. -40C° / max. -20C° PS2 = 33 Bar
- Unless otherwise specified do not scale
- Unless otherwise specified tube must be clean&free from burrs inside&outside&suitable for soldering
- Unless otherwise specified do not scale indicated thickness are min. after forming or machining
- Unless otherwise specified dimension tolerances according to EN 113445-4

## REVISIONS

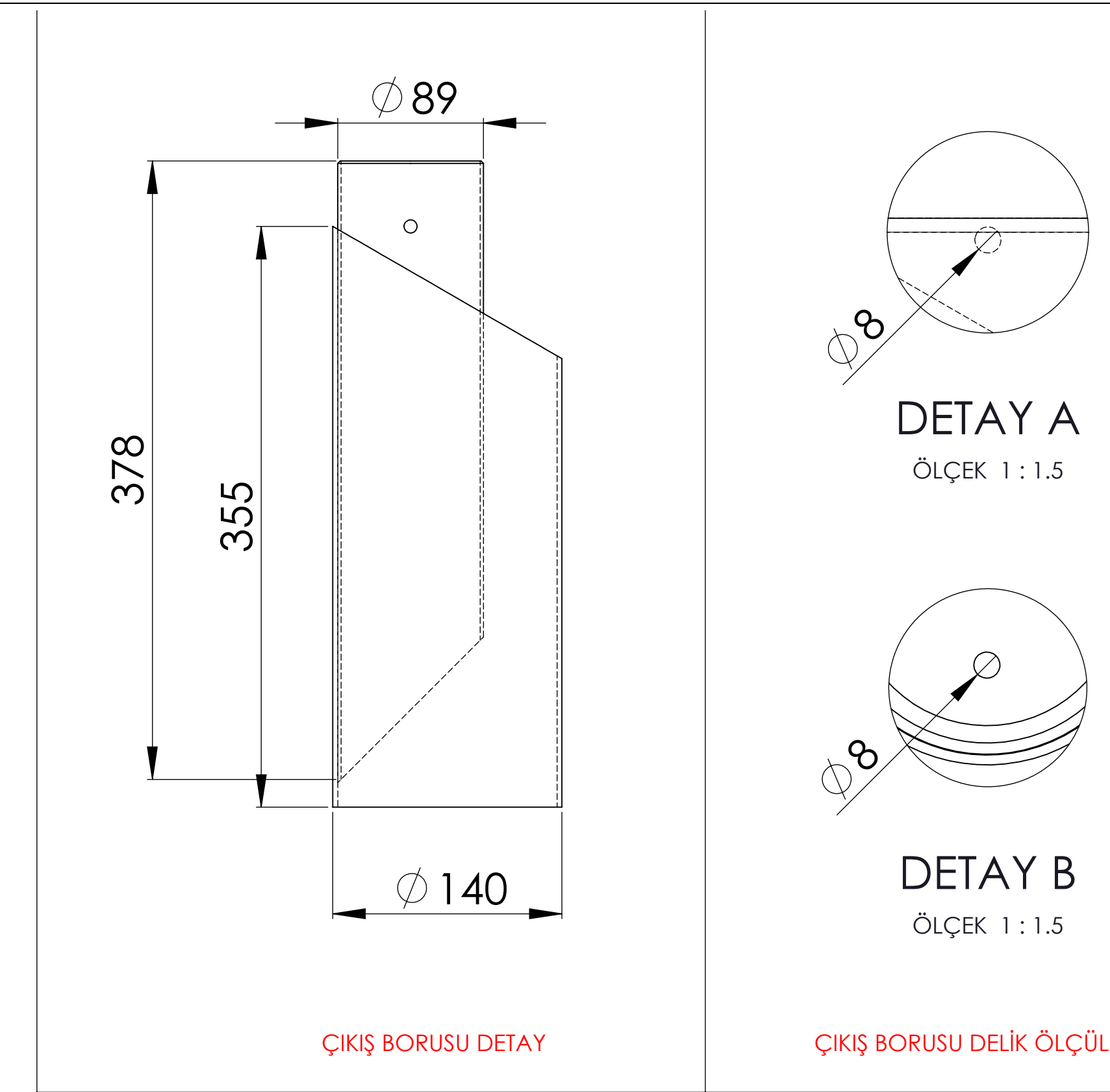
No	Details Of Change	Date	By
01			
02			
03			

## RELATED DRAWINGS

No	Description	Drawing No
01		
02		

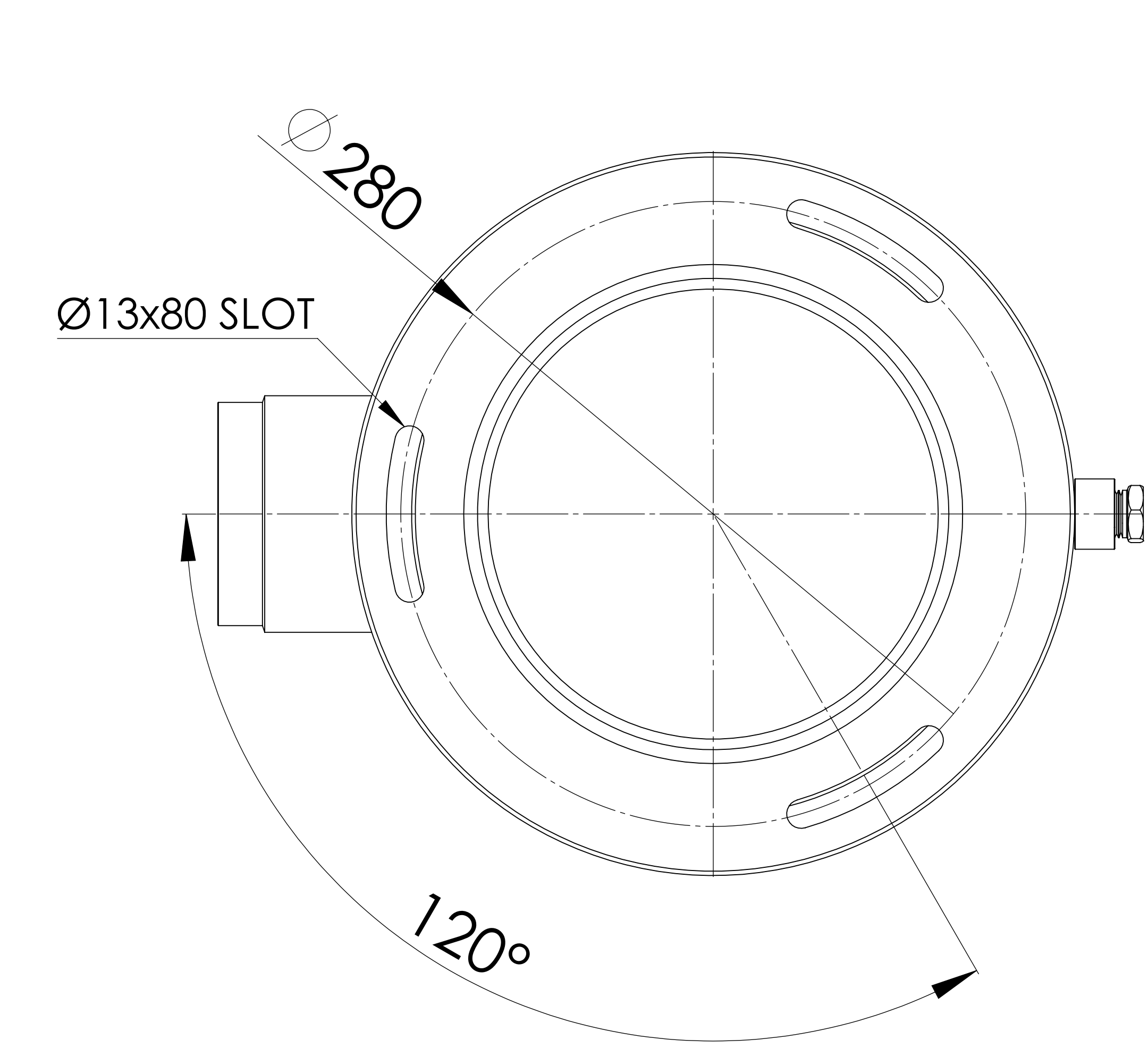
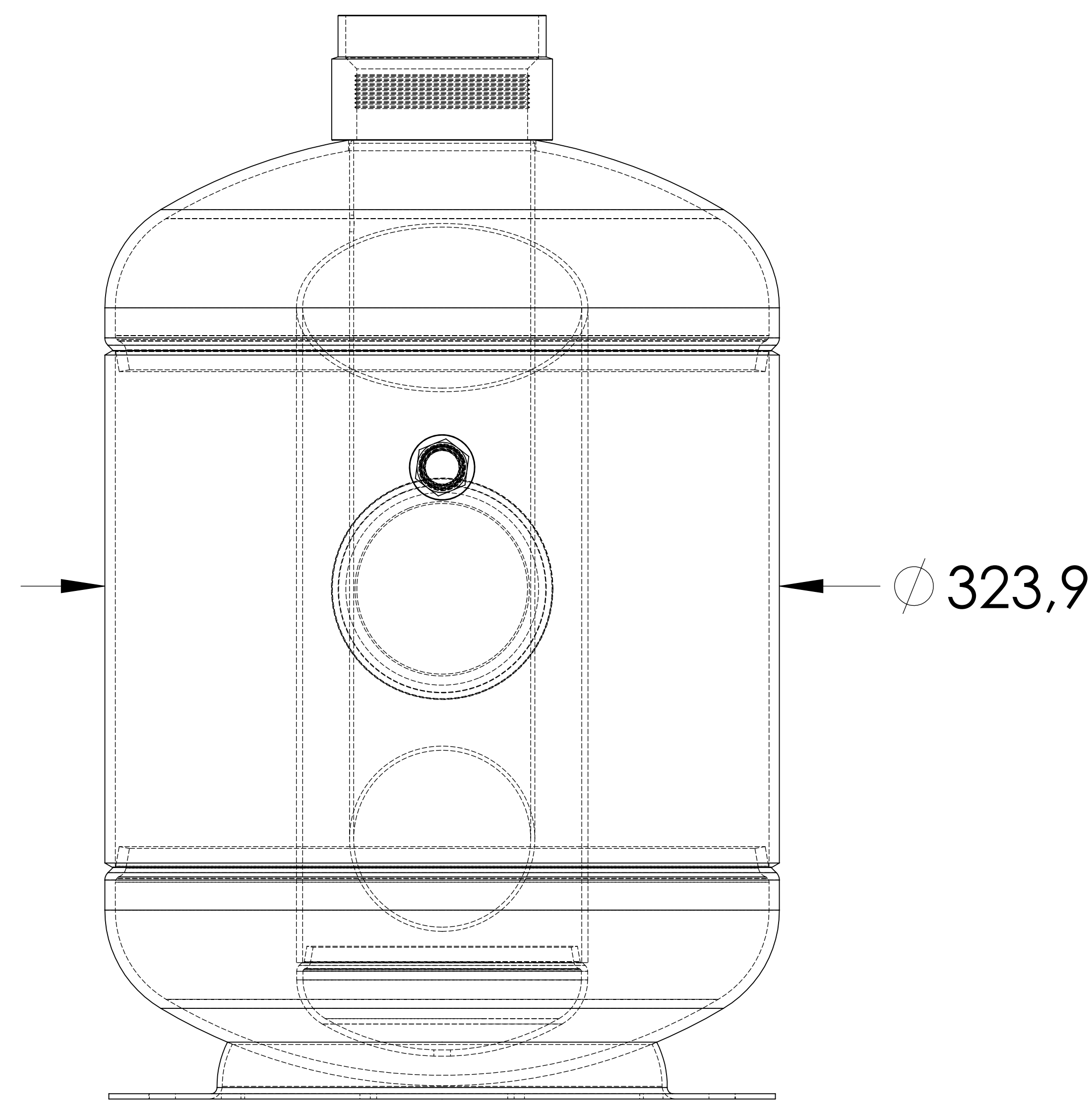
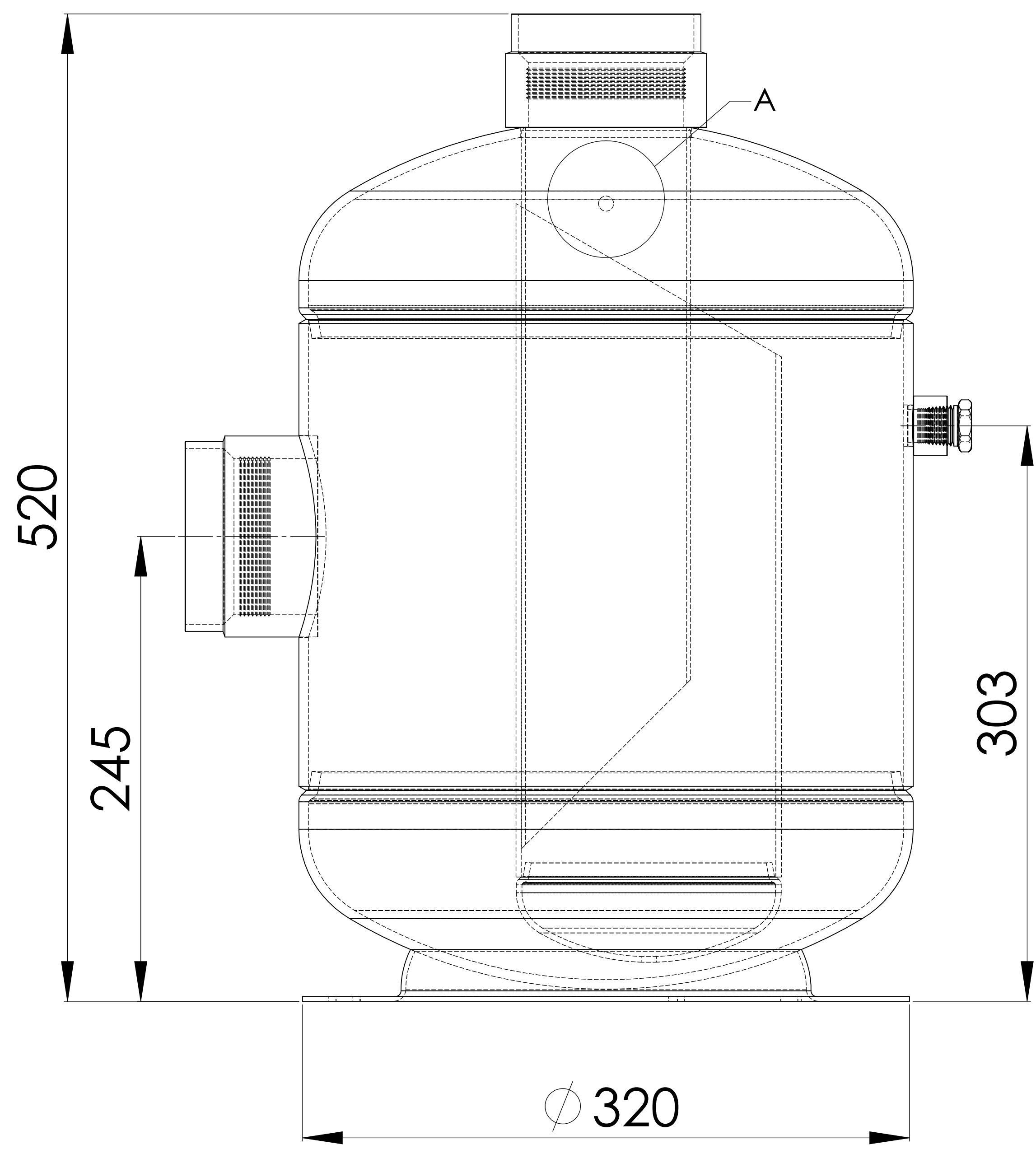


We reserve all rights in this document and in the information contained therein. Reproduction use or disclosure to third parties without express authority is strictly forbidden.

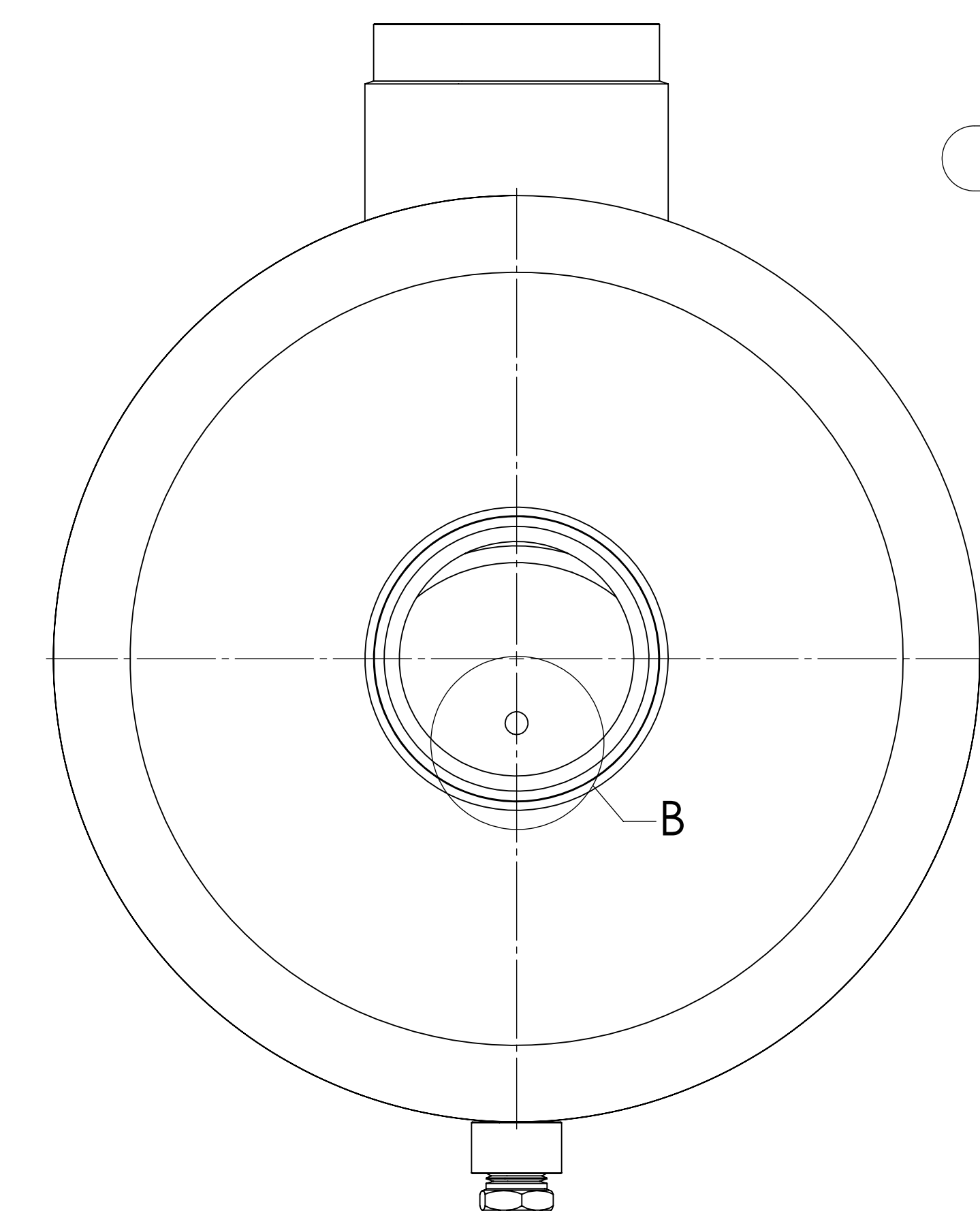


ÇIKIŞ BORUSU DETAY

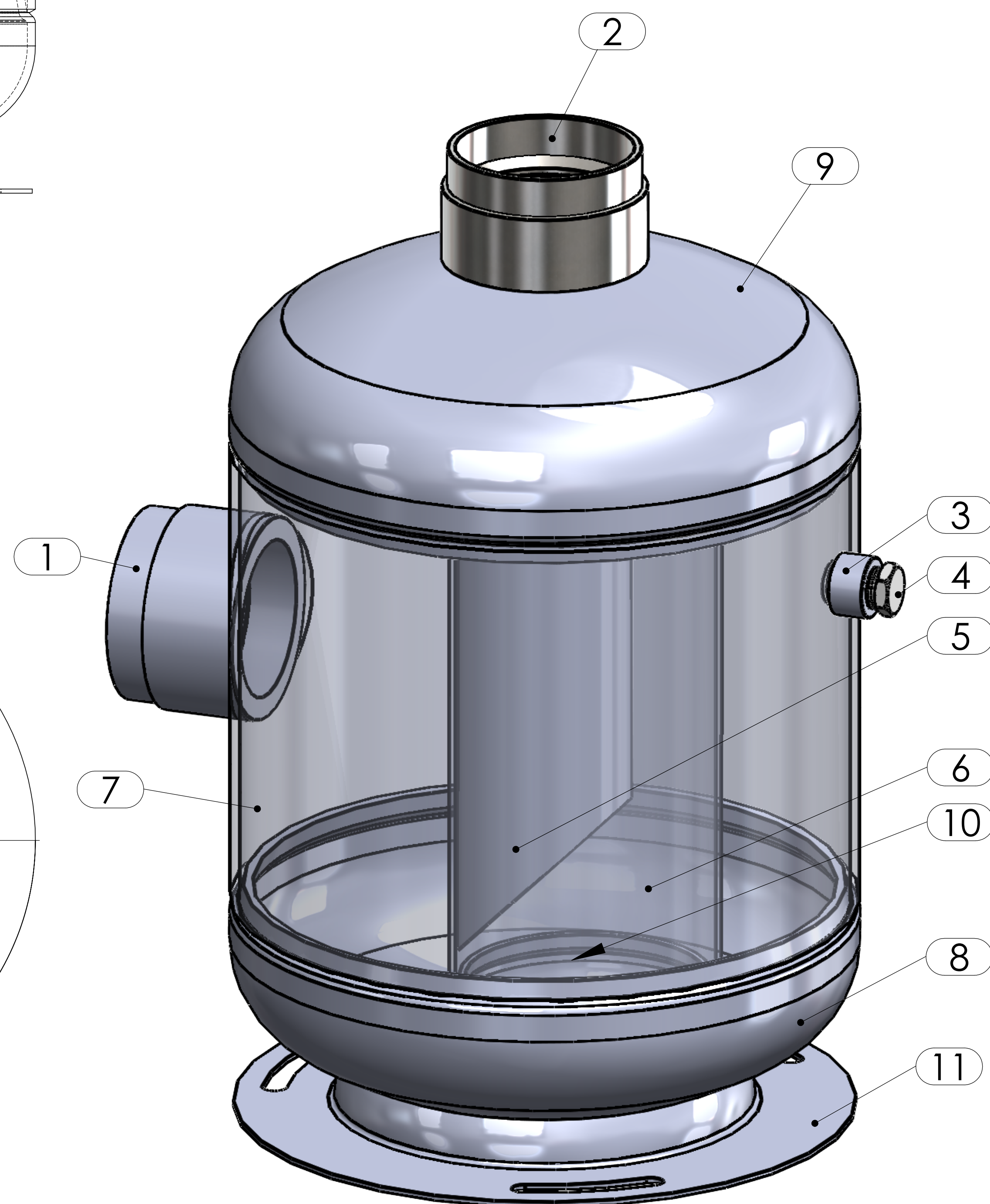
ÇIKIŞ BORUSU DELİK ÖLÇÜLERİ



BOTTOM VIEW



TOP VIEW



No	Assembly Codes	Qty
1	M005.000417	1