

# VESTEL

---

## VESTEL VANİLYA 2000 B / 2100 B MULTI BLENDER SET

---

### USER MANUAL

## **Dear Valued Customer,**

Now that you chose our Blender set, you also bought a quality **VESTEL** product.

The life of your appliance will prolong if you perform necessary care and maintenance procedures.

We hope you enjoy using your appliance.

## **Important Safety Information**

Please read the instructions in this manual carefully to familiarise yourself with the appliance quickly and use all the functions of your appliance to their fullest extent and keep this manual for future reference.



**WARNING:** Refers to the serious injury risks.



**CAUTION:** Specifies the dangers that could cause damage or breakdown of your device.

**WARNING:** Before you start to use your appliance, read this manual carefully in order to prevent any dangerous situations, risks of fire, electric shock and personal injuries. Always observe the instructions.

# Contents

<b>Safety warnings .....</b>	<b>1</b>
Safety Information to be Considered when Using the Appliance	1
Safety Information to be Considered when Performing Cleaning and Maintenance Procedures .....	5
Points to be Considered during Carrying and Transportation ..	5
Liability Limitation .....	6
<b>Technical Specifications.....</b>	<b>6</b>
<b>General Appearance.....</b>	<b>6</b>
<b>Before Initial Operation.....</b>	<b>7</b>
<b>Usage.....</b>	<b>8</b>
Use as a Blender.....	8
Use as a Whisk.....	9
Use as a Chopper .....	10
Using the Chopper.....	11
<b>Cleaning and Maintenance .....</b>	<b>13</b>
<b>Storage .....</b>	<b>13</b>
<b>Troubleshooting .....</b>	<b>14</b>

## Safety warnings

### **Safety Information to be Considered when Using the Appliance**

- This user manual contains important information about the first use, safety, intended uses, cleaning and maintenance of your appliance.
- Read the user manual carefully and follow the instructions.
- Keep this user manual in a safe place, and provide this user manual with the appliance in case you lend your appliance.
- This appliance is designed to mix, blend and chop small quantities of food for non-commercial uses in indoors.
- This appliance is intended for household use and has been designed to be used in environments similar to the ones below:
  - Kitchens of shops, offices and similar working environments;
  - Farm houses;
  - In hotels, motels and other residential type environments by customers;
  - Bed and breakfast type environments
- **WARNING:** Operation of the appliance for purposes other than its intended purpose may cause damage and dangerous conditions and renders the warranty void. Damages that may occur under these conditions are borne by the user.
- Connect and operate the appliance only in accordance with the information on type label. The manufacturer is not responsible for the malfunctions that may occur in case of any incompatibility. The appliance is processed outside the scope of warranty.
- Connect the appliance only to an AC current and a grounded outlet.
- If the appliance stops while it is in use, unplug it from the outlet and let it cool for 5 minutes. The appliance will start working.
- If the appliance is not fully assembled, do not plug it into the wall outlet and be sure to unplug the appliance before disassembling it or holding

the blade.

- This appliance can be used by children who are at age of 8 and over and people who have limited physical, sensory or mental capacity or lack of experience and knowledge about its use provided that they are supervised or given instructions about its safe use and they understand the risks associated with its use.
- Children should not play with the appliance. Keep the appliance and its cord out of the reach of and away from children.
- Cleaning and user-maintenance procedures should not be performed by unsupervised children.
- The appliance should not be used by children without supervision.
- Do not allow the appliance cable to dangle from the table or the counter. Children can pull down the appliance holding its cord and this can lead to injuries.
- **WARNING:** Packaging materials can cause suffocation.

Keep away from the reach of the children.

- Always use this appliance on a steady, dry and flat surface.
- When the appliance is not in use, left unattended, when removing or installing parts, and before cleaning your appliance, always unplug the appliance from the outlet.
- In order to avoid electrical hazards, do not immerse the power cord, plug or motor compartment of your appliance in water or other liquids.
- Before using, check whether all functions are operating correctly.
- There is risk of injury due to misuse. Special attention must be paid when holding the sharp blades, emptying the container and during cleaning. If a hot fluid is poured into the appliance, there may be a sudden steam exhaust; be careful.
- If the power cord is damaged, discontinue to use the power cord to avoid any danger. If the power cord is damaged, it should be replaced only by

an authorised service recommended by the manufacturer to prevent any danger. Please contact with the authorised service or customer communication center.

- The appliance should only be used if there are no visible damages in its power cord and on its body.
- Never use your appliance under following circumstances:
  - If the appliance, its power cord or its plug is damaged,
  - If the appliance is dropped, there are visible signs of damage or the appliance does not function correctly,
  - If the appliance is damaged to the extent that its electrical parts are seen or it has missing parts,
  - If the appliance is left outdoors or dropped inside water.
- If any of the conditions described are observed, disconnect the power cord immediately and contact with an authorised service. A damaged appliance or damaged parts can cause serious injuries and fire.
- In case of any failure with your appliance, do not attempt to repair it. Do not disassemble the appliance; incorrect reassembly may cause a risk of electrical shock during use. The appliance does not contain any components which might be repaired by the user.
- Use of accessories not recommended by manufacturer may cause damage on the appliance and injury.
- Do not use your appliance outdoors.
- Extend the power cord so that it does not cause any danger. Do not pull the power cord over sharp edges and do not pinch it.
- Keep the cord away from direct sunlight and hot, humid and wet areas.
- To reduce the risk of injury, never place the cutting blade on the base before neatly placing the container in place.
- Do not leave your appliance unattended while it is in use.
- Turn off or unplug the appliance before leaving it unattended or after using it.

- After using the appliance, make sure that you have switched the button to the OFF position.
- Before removing the parts, make sure that the motor of the appliance has fully stopped.
- Never use your device near a full bathtub, washbasin, etc.
- Never disable the locking system on your appliance.
- **WARNING:** Avoid contacting the moving parts. Do not bring your hands, hair, clothes and any tools closer.
- Before replacing accessories or getting close to the moving parts during usage, stop the appliance and unplug it.
- Do not operate any accessories of the appliance in an empty container or outside. The appliance may get damaged.
- **WARNING:** Do not place your appliance or its power cord on hot surfaces such as hobs or near open flames.
- In order to disconnect the appliance, switch the control button to the off position and then unplug the appliance.
- **WARNING:** Suitable for operating for a short period. Do not use the appliance continuously for more than 10 seconds to avoid overheating. Allow the appliance to cool for 1 minute between every 10 seconds of operation. Otherwise your appliance may get damaged.
- The appliance cannot be used to break ice or mix hard and dry substances, otherwise the blade may blunt.
- Before operating the appliance, make sure that the chopping container cover is firmly seated in place.
- While unplugging your appliance, grasp the plug and do not carry by holding by its cable.
- Do not use or touch your appliance with wet hands.
- Do not use an extension cord for this appliance.
- Never drop or insert objects into the openings.
- Plug in your appliance only when it is switched off.

- Be careful when transporting, using, emptying the container and cleaning the slicing/grating stainless steel blades of the appliance because they are sharp. It can cause serious injuries.

### **Safety Information to be Considered when Performing Cleaning and Maintenance Procedures**

- Clean the appliance regularly as stated in the "Cleaning and Maintenance" section. Before starting the cleaning and maintenance procedure, always unplug the appliance from the outlet.
- Never use harsh abrasive cleaning agents to clean the appliance. You can clean the outer surface of the appliance with a slightly damp cloth.
- Do not immerse the motor unit, whisk holder and chopper adapter in water or other liquids; just wipe with a damp cloth, then dry well. Otherwise, the ingress of water into it will cause serious damage.
- Clean the Double Sided Stainless Steel Blade with warm

soapy water. When washing under water, be careful not to allow water enter into the slot where the motor is seated. If water gets into the slot, immediately turn it upside down to shake it out and leave it to dry with the blade facing upwards.

- **WARNING:** Before replacing accessories or getting close to the moving parts during usage, stop the appliance and unplug it.
- Be careful when cleaning the blades as it is extremely sharp. While washing the blade, hold it so that its cutting edge is away from you.

### **Points to be Considered during Carrying and Transportation**

- During carrying and transportation, your appliance must be kept in original box in order to protect its components from damage.
- Keep the appliance in normal position during carrying.
- Do not drop the appliance during transportation and protect it from impacts.



- Failures and damages occurred during transportation after delivery of product to customer are not covered by warranty.

### Liability Limitation

All technical information, user instructions, information about operation and maintenance of the appliance contained in this manual are the most up-to-date information available. Manufacturer does not assume any responsibility for damages and injuries that may occur as a result of non-compliance with the instructions given in this manual, using the product for purposes other than its intended use, unauthorised repairs, unauthorised modifications on the product and using spare parts that are not approved by the manufacturer.

### Technical Specifications

MODEL	VESTEL VANILYA 2000 B / 2100 B MULTI BLENDER SET
-------	--

OPERATING VOLTAGE (V), FREQUENCY (Hz)	220-240 V~, 50/60Hz
Power (W)	1000 W

- The values declared in the printed documents supplied with the product, on the markings on the product and on [www.vestel.com.tr](http://www.vestel.com.tr) are the values obtained in the laboratory in accordance with the relevant standards. These values may vary depending on the usage and ambient conditions of the product.
- Technical specifications and this manual are subject to change without prior notification.
- Complies with WEEE regulation.

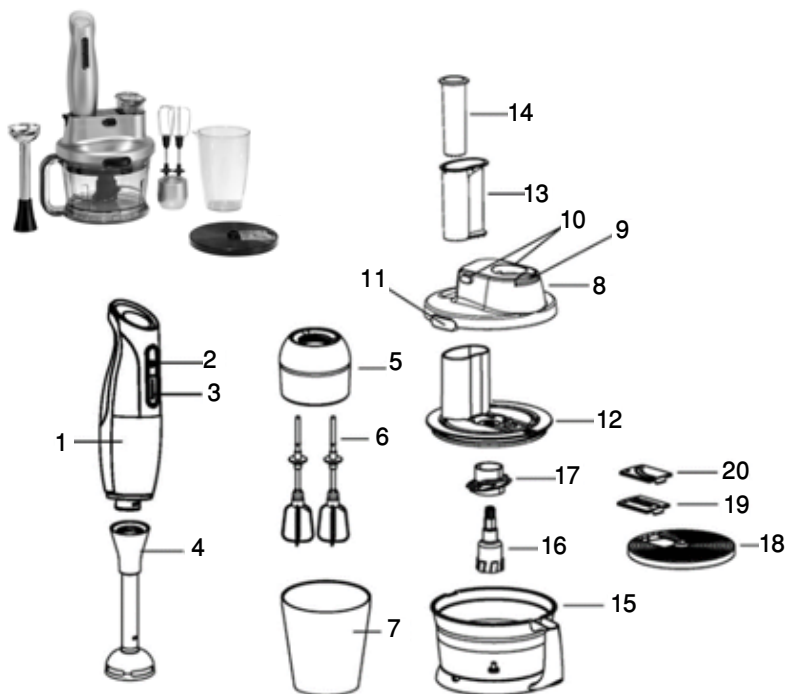
**CE** This product is in compliance with the European CE Directives 2014/30/EU (Electromagnetic Compatibility Directive) and 2014/35/EU (Low Voltage Directive).



This appliance conforms to Regulation on the Supervision of the Waste Electrical and Electronic Equipment.

### General Appearance

This illustration is intended for providing information on the components of the appliance only. Components may differ as per appliance model. Illustrations are representative.



1. Motor (Main Body) Unit
2. Normal Speed Start Button
3. Turbo Speed Start Button
4. Stainless Steel Chopper Stand
5. Whisk Holder
6. Whisk (Dual)
7. Mixing (Measurement) Container
8. Food Processor Top Cover
9. Motor Unlock Button
10. Cover Opening Buttons
11. Cover Locking Latch
12. Protective Cover
13. Pusher
14. Pusher (for thin and long ingredients such as carrots etc. )
15. Chopping Container

16. Accessory Shaft
17. Chopper Blades
18. Plastic Apparatus Holder
19. Grating Apparatus
20. Slicing Apparatus

## Before Initial Operation

- Clean your appliance as explained in the cleaning and maintenance section before using it.
- Comply with the usage instructions to avoid damaging the motor compartment.
- This product has been designed to operate for short bursts with intervals.

- Store the chopper blade in the chopping container when you are not using it.
- Open and straighten the mains cable of the iron.

## Usage

The motor unit has buttons to start at normal speed and turbo speed, and the appliance can be started at the push of any button.

### Use as a Blender

- The stainless steel chopper foot retains its sharpness longer than standard blades thanks to its specially designed and hardened material.
- You can prepare sauces, milk, juice, soups, cocktails; you can make cooked vegetables/fruits and mashed potatoes (sample baby food). You can mix soft ingredients such as butter, eggs, flour and oil (for mayonnaise, scrambled eggs and dough) and mix the food that is being cooked on the hob.
- Attach the Double Sided Stainless Steel Chopper Stand to the motor unit by turning it until it is seated into its place but make sure that it is not tightened too much. Turn it in the opposite direction to remove it.



- Place the blender into the container filled with food. Move the blender up and down in vertical position.



- Plug the hand blender into an outlet in accordance to the type label.
- Start the appliance by pressing either the Normal Speed Start Button or the Turbo Speed Start Button.
- To stop the blender, release the button you have pressed to start it. Never operate the appliance for more than 10 seconds.
- Use a deep container to get a good result from your appliance and prevent ingredients from splashing around.
- **WARNING:** The blades are very sharp, carry them carefully. Before installing or removing the fittings, make sure that the blender is unplugged.
- Peel off the fruits and vegetables.

Remove the seeds and chop them into small cubes and put these pieces of food in the container.

- To facilitate trouble-free operation, it is necessary to add a certain amount of water. The ratio of food and water is 2:3. The amount of the mixture should not exceed the maximum capacity of the container.
- **CAUTION:** The blender knife is quite hard. Be careful when using it. Do not use the appliance without water in the food. Be sure to mix the food you need to mix with water.
- Never use your blender by pressing it hardly on the ingredients you are going to use.
- When you are finished with the Stainless Steel Blade, clean it immediately and dry it with a damp cloth.
- **CAUTION:** After placing your appliance in the ingredients, turn it on and when you are done, never remove the ingredients from it before the appliance comes to a full stop.

## Use as a Whisk

- The whisk is used in the preparation of foods such as cream, whipped cream, egg white, cake dough, mayonnaise and ready-made desserts.
- To use the whisk accessory, push the whisks until you hear the sound of settling on the whisk holder.
- Attach the whisk holder to the motor unit by turning it until it is seated into its place but make sure that it is not tightened too much. Turn it in the opposite direction to remove it.



- Place the whisk perpendicular to the mixing container filled with food or in a deep container where you have previously placed the ingredients.
- Plug the appliance into the outlet and start it by pressing the normal speed start button or the turbo speed start button and mix the ingredients in up-down and circular movements.
- To stop the appliance, release the button you have pressed to start it. Never operate the appliance for more than 10 seconds.
- After each use, always remove the whisks from the whisk holder and wash them with detergent water. It will be enough to wipe the holder with a damp cloth. Excess water can enter the appliance and lead to damage to the appliance.
- **NOTE:** The container volume is 900 ml, but the maximum level that can be utilised when the process is performed with liquid is 300 ml. Otherwise, overflows may occur.
- **WARNING:** Never soak the engine unit in water.
- **WARNING:** The blades are extremely sharp; hold their plastic parts while attaching/removing and pay special attention.
- **WARNING:** This appliance has been

designed to operate at intervals. Short periods of operation are recommended.

- **WARNING:** Do not operate the device when it is idle or outside the container.
- **WARNING:** Do not press the appliance hardly on the ingredients.
- **CAUTION:** Always operate your blender in vertical position.

## Use as a Chopper

- You can use the appliance for mincing meat or chopping vegetables, cheese, dried fruits. The appliance is suitable for the preparation of food (other than meat) with a maximum weight of 800 g at a time.
- **NOTE:** Separate the meat from the bone and cut it into small pieces. Then put the meat in container. The maximum amount of meat should not exceed 300 g in each round of chopping. Do not operate for more than 10 seconds.
- **Slicing Blade:** It is used for the preparation of vegetables such as carrots, cucumbers or potatoes.
- **Grating Blade:** It can be used for the preparation of foods such as carrots, cheddar cheese, celery/celery stalks.
- It is not suitable for crushing coffee beans and similar foods with hard core.
- Place the chopping container on a clean and flat surface.
- Attach the holder to the accessory shaft and then place it in the shaft located in the center of the food processor container.



- Attach the slicing and grating blade to the plastic blade holder.



- Place the material you want to chop in the container at an equal height and in such a way that it does not pile up at one side. Do not put more food than recommended. Place the protective cover on the chopper.



- Place the lockable food processor top cover on the protective cover. The clicking sound indicates that the cover has been seated and locked in place.



- Press the lockable food processor top cover onto the protective cover so that you hear the cover locking latch clicking into its place. Press the cover release buttons on both sides to remove the food processor top cover.



- To place the Motor (Main Body) Unit on the food processor cover, align it with the dot on the side of the unlocked mark and turn it towards the dot next to the lock closed sign until you hear that it clicks into its place. To remove the Motor (Main Body) Unit, press the Motor Unlock Button with the open lock mark on the food processor cover and turn the unit towards the dot on the unlocked mark side.



- Plug the appliance into an outlet in accordance to the type label.
- Start the appliance by pressing the normal speed start button or turbo speed start button. The turbo button allows pulsed operation and maximum power utilization. With the turbo function, you will get the desired result more easily, especially when chopping. When using the turbo function, press the button at short intervals.
- Release the normal speed start button or turbo speed start button to stop the appliance.
- Drop the food into the container from the tube with the help of the pusher.
- **WARNING:** Never use your hands and fingers to put food in the container.

## Using the Chopper

- Attach the Chopper Blade to the accessory shaft and then place it in the shaft located in the center of the food processor container. Put the material to be chopped in the food processor container and place the cover.
- Make sure that the Motor (Main Body) Unit is placed on the food processor cover.
- Plug the appliance into an outlet in accordance to the type label.
- Start the appliance by pressing either the Normal Speed Start Button or the Turbo Speed Start Button.
- Release the normal speed start button or turbo speed start button to stop the appliance.
- Drop the food into the container from the tube with the help of the pusher.
- **CAUTION:** To reduce the risk of injury,

never place the cutting blade on the base before neatly placing the food processor container in place.

- If unchopped parts remain after running the appliance, mix the ingredients with the help of a spatula and perform the process again.
- **WARNING:** Never soak the engine unit in water.
- **WARNING:** The blades are extremely sharp; hold their plastic parts while

attaching/removing and pay special attention.

- **WARNING:** This appliance has been designed to operate at intervals. Short periods of operation are recommended.
- **WARNING:** Do not operate the product while it is empty.

Consider the table for approximate processing times for the chopper.

Ingredients	Maximum Amount (g)	Speed	Required Accessory	Processing Time (s)
Butter and Honey Mixture	450 butter - 600 honey	Normal-Turbo	Double-sided chopper blade	5
Onion/Garlic	500	Normal-Turbo	Double-sided chopper blade	3-6
Parsley	100	Normal-Turbo	Double-sided chopper blade	5-10
Meat (lean, without nerves, cut in cubes)	300	Normal	Double-sided chopper blade	10
Hazelnut	300	Normal-Turbo	Double-sided chopper blade	5-10
Fruit	700	Normal	Double-sided chopper blade	10
Biscuits	300	Normal-Turbo	Double-sided chopper blade	5-10
Carrot	400	Normal-Turbo	Double-sided chopper blade	5-10

Consider the table for approximate processing times for grating and slicing.

Ingredients	Maximum Amount (g)	Speed	Required Accessory	Processing Time (s)
Carrot	400 g	Normal-Turbo	Grating Blade	5-10
Radish	400 g	Turbo	Grating Blade	5-10
Potato	400 g	Normal-Turbo	Slicing Blade	5-10
Pumpkin	800 g	Normal-Turbo	Slicing Blade	5-10
Cucumber	800 g	Normal	Slicing Blade	5-10

**NOTE:** Remove the kernels of fruits such as peaches, apricots and plums as well

as the shells of nuts such as almonds, hazelnuts and walnuts before processing.

## **Cleaning and Maintenance**

- As indicated in the safety information section, before starting the cleaning and maintenance procedure, always unplug the appliance from the outlet and let it cool.
- It is important that you wash the accessories immediately after using them so that the appliance can be cleaned easily.
- Release the motor unit. Risk of electric shock! Do not immerse the motor (main body), whisk holder, food processor cover in water; otherwise there is the risk of electric shock. Clean the outside with a damp, soft cloth and dry thoroughly.
- Clean the Double Sided Stainless Steel Blade with warm soapy water. When washing under water, be careful not to allow water enter into the slot where the motor is seated. If water gets into the slot, immediately turn it upside down to shake it out and leave it to dry with the blade facing upwards.



- You can wash the remaining accessories of the appliance in the dishwasher.
- **NOTE:** Colours of the plastic parts

of your appliance may change while preparing coloured foods (e.g. carrots). You can clean these parts by rubbing them with vegetable oil before cleaning.

- **CAUTION:** The blades are very sharp, carry them carefully. As the blades are extremely sharp, be careful while cleaning them.

## **Storage**

- If you do not intend to use the appliance for a long time, store it carefully.
- Unplug the appliance from the wall outlet before storing it.
- Store the appliance in a cool and dry place.
- Keep the appliance out of reach of children.



## Troubleshooting

When you notice an abnormal situation in your appliance, you may attempt to troubleshoot according to the descriptions given in the table.

If your appliance does not still operate properly, contact Vestel Call Center. You may access the authorized service providers list and contact information from the web site.

Problem	Cause	Solution
The appliance is not operating.	The device is not plugged in correctly.	Plug it firmly.
	No power at the outlet.	Check the fuse or power switch.
	The motor may not be fully seated on the top cover of the food processor.	Make sure that the motor unit is placed on the top cover of the food processor.
The appliance operates, but the blade does not turn.	The accessory shaft may not be seated well into the food processor container shaft or the food processor top cover.	Make sure that the accessory shaft is fully seated in the food processor container shaft or food processor top cover.
	The motor unit may be not seated on the top cover of the food processor.	Make sure that the motor unit is placed on the top cover of the food processor.
The device shuts down while it is running.	The appliance may be overheated and the protector may have been activated.	The appliance will start working again after waiting 5 minutes for it to cool down.

## Disposal of the Appliance in an Environmental Friendly Manner



This symbol on the appliance or on the packaging of the appliance indicates that the appliance shall not be handled as household waste. Instead of this, it shall be delivered to the applicable waste collection point where electrical and electronic equipment are recycled. By ensuring that this unit is disposed properly, you may help in reducing the potential adverse effects on the environment and human health due to incorrect waste handling of the product. Recycling of materials would contribute to protection of natural resources. Please contact your local municipality, household waste disposal service or the shop you have purchased this product for more information on the recycling of it.

### Packaging information

Packaging material of product is totally recyclable. Do not discard packaging material with household waste or other wastes, discard it to packaging material collecting point determined by local government.

### Recommendations on energy saving

Put as much ingredients as you need in the container; do not overload it. Before adding solid ingredients to the appliance, cut them into small pieces. Follow any other instructions and periods outlined in the manual. Turn off the appliance and unplug it from the outlet after use. Run momentarily (single pulse). It is recommended not to run for a long time.

### Customer's Elective Rights

The customer, in case the product is found defective as per the terms of Protection of the Consumers Act, No 6502,

even though the defect occurs at a later time, have the following rights for two years following the date of delivery to the customer:

- 1) Return the sold product and cancel the agreement,
- 2) Keep the sold product and request a discount on the sales price in proportion to the defect, (one of these elective rights can be used against the Seller),
- 3) Unless an excessive cost is required, request a free-of-charge repair of the product, with all costs belonging to the Seller,
- 4) If it is possible, to replace the product with an equivalent one free-of-defect, (one of these elective rights can be used against the Seller, manufacturer or importer).

If the free-of-charge repair or replacement with an equivalent product free-of-defects will cause a disproportional drawback for the seller then the consumer can use his right to cancel the agreement and request a discount on sales price in proportion to the defect.

The customer can file their complaints and rejections at Consumer Courts and Consumer Arbitration Committees.

**Manufactured in:** Turkey

### Manufacturer:

**Vestel Ticaret A.Ş.**

Address: Levent 199 Büyükdere Cad.

No:199 34394

Şişli/İSTANBUL-TURKEY

Phone : 0850 222 4 123

E-Mail : vmh@vestel.com.tr

<http://www.vestel.com.tr/destek>

WhatsApp: 0850 222 4 123

0850 222 4 123  
www.vestel.com.tr

 0850 222 4 123  
WhatsApp



Your appliance's service life, as determined and declared by T.R. Ministry of Customs and Trade General Directorate of Consumer Protection and Market Surveillance, (the duration for providing the spare parts required for functioning of the appliance) is 7 years.



We continue to contribute to the nature by using recyclable papers.

**Manufacturer:**

Vestel Ticaret A.Ş.  
Levent 199 Büyükdere Cad. No:199  
34394 Şişli/İstanbul - Turkey  
Tel: 0850 222 4 123  
Web: www.vestel.com.tr/destek  
E-mail: vmh@vestel.com.tr  
WhatsApp: 0850 222 4 123



**Zorlu Holding kuruluşudur.**