

irhuggy

"Care for Future"

revo



Catalogue

1. Safety Instructions.....3

2. Product Overview.....4

3. Product Assembly.....5

3.1 Folding and Unfolding the stroller.....5

3.2 Front Wheels.....6

3.3 Rear wheels.....

3.4 Bumper Bar.....6

3.5 Seat Unit.....7

3.6 Canopy.....8

3.7 Basket.....8

4. Using and Operation.....9

4.1 Handle Tube Height Adjustment9

4.2 Seatback Angle Adjustment.....9

4.3 Canopy Folding.....9

4.4 Rest Board.....10

4.5 Brake10

4.6 Front Wheel Swivel Lock.....10

4.7 Harness System.....10

4 Cleaning and Maintenance.....12

5 Warranty.....12

6 Relevant Information.....13

1. Safety Instruction

IMPORTANT: Keep these instructions for future reference!

Before using the stroller, please read the manual carefully. It will help you to use the stroller properly. Failure to follow the instruction manual may affect the child's safety.

WARNING

- **Never leave your child unattended!**
- **This product is not suitable for running or skating.** Stroller is intended for use at walking speed only.
- It is recommended using the most reclined position for new born baby.
- Always keep child in view while in stroller.
- **DO NOT let your child climb or play with this product.**
- **Always use the restraint system!**
- Always engage the parking brake when the stroller is not moving.
- Engage the parking brake when securing or removing the child.
- **Ensure that all the locking devices are engaged before use.**
- Any load attached to the handle and /or on the back of the backrest and/or on the sides of the vehicle will affect the stability of vehicle.
- **Check that the pram body or seat unit or car seat attachment devices are correctly engaged before use.**
- Not suitable for more than one child.
- Keep away from fire.
- Use care when folding and unfolding the stroller to avoid finger entrapment or pinching.
- DO NOT use stroller on stairs or escalators.
- **To avoid injury ensure that your child is kept away when folding and unfolding this product.**
- DO NOT hang or place items on the stroller handle or frame unless approved by manufacturer.
- DO NOT allow child to stand in stroller.
- DO NOT push or lift the stroller by the bumper bar.
- This stroller is not suitable for child who weigh is more than 15 kgs.
- When used for children under the age of 6 months we recommend using the supplied carrycot until the child can sit unaided.
- DO NOT overload on the basket. The maximum weight is 2 kgs.
- **DO NOT use accessories not provided or approved by manufacturer.**
- Only replacements parts supplied or recommended by the manufacturer or distributor shall be used.

2. Product Overview



Part Name

- | | |
|-------------------------|-------------------------------------|
| 1. One-Hand-Fold Button | 10. Front Wheel Swivel Lock |
| 2. Handle Tube | 11. Seat Cover |
| 3. Canopy Housing | 12. Rest Board |
| 4. Portable Belt | 13. Rest Board Button |
| 5. Basket | 14. Front Wheels |
| 6. Canopy | 15. Seatback angle adjusting button |
| 7. Bumper Bar | 16. Brake Pedal |
| 8. Harness Strap | 17. Rear Wheels |
| 9. Harness Buckle | |

3. Product Assembly

3.1 Folding and Unfolding the stroller

3.1.1 Unfolding the stroller:

Please remove and discard all packaging materials before unfolding the stroller. According to Fig 1, lift up the handle tube and rotate the one-hand-fold in accordance with the arrow direction until the stroller frame is fully unfolded (the side locks must lock into place with “click” sound).



3.1.2 To fold the stroller

Push the seatback in the most upright position, and operate the seatback adjustable button to push the seatback in the “folding stroller” position.



WARNING:

- Keep Children away from the stroller during unfolding and folding .
- Ensure that the frame locks are engaged before use .

Then press the one-hand-fold button to adjust the handle tube in the lowest position, and continue to press the second safety lock to rotate the handle tube forwards, pull the portable belt to ensure stroller is folded completely.



3.2 Front Wheels

3.2.1 To assemble front wheel

Place the front wheel axle into the hold at the end of front leg tube and fit in until it clicks. Push down to ensure the front wheel is secured. Repeat another wheel.

3.2.2 To remove the front wheels

Lift the front wheel slightly, pull the release button on the side of the front wheel housing and pull off the front wheel.



3.3 Rear Wheels

3.3.1 To assemble rear wheels

Locate the rear wheel as shown in the image, sliding on the rear wheel until it is locked into place. Repeat for the opposite side. Pull on the wheel to ensure it is secured.

3.3.2 To remove rear wheels

Pull outwards on the rear wheel release button by one hand, at the same time using another hand to pull out of rear wheel until it is removed.



3.4 Bumper Bar

3.4.1 Bumper Bar Assembly

Slide the bumper bar ends into the track on the inner of hinge until it clicks into place. Pull the bumper bar outwards to ensure it is locked securely.



3.4.2 To remove bumper bar

Push the release buttons at both sides on the bumper bar ends and pull off the bumper bar. The bumper bar can be only removed at one side, then rotate away.



3.5 Seat Unit

3.5.1 To assemble the seat

Place the seat unit towards to the stroller frame seat connectors then push down to lock into the place (with the “click” sound”). Pull the seat upwards slightly to ensure the seat unit is secured properly. The seat unit can be assembled forwards and backwards



3.5.2 To remove the seat unit

When the seat is fixed forwards, hold on the bumper tube by two hands then use the fingers to push the seat releasing buttons forwards to take away the seat unit from the stroller frame completely.

When the seat unit is fixed backwards, use two hands to hold the seat unit support plastic parts then push the seat unit release button forwards to take away the seat unit completely.



3.5.3 Removing the seat covers

According to showing figure, open the Velcro underneath the seat cover bottom, and release the fasten belt with metal connector, then lift up the seat cover upwards (pull the seatback adjustable button out of the seatback covers opening firstly), and slowly take out of the seat cover from seat frames completely for cleaning and maintenance.



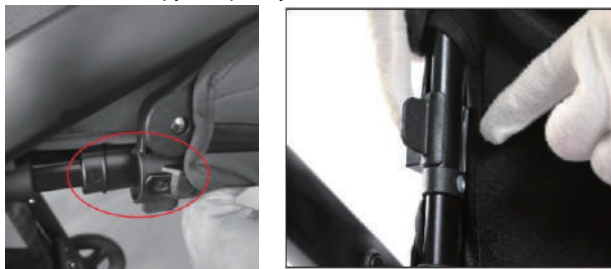
3.6 Canopy

3.6.1 Assemble the canopy

To follow up the canopy fixture direction, place the canopy housing onto the seatback tube at the canopy connector area securely.

3.6.2 To remove the canopy

Close the canopy, and push the canopy housing outwards to unlock the canopy housing from the seatback tube, push the seatback adjustable button out of the opening on the canopy back, then remove the canopy completely.



3.7 Basket

3.7.1 Assemble the basket

To wrap the basket around the basket tubes, and close all of Velcro straps. Hang on the middle of basket through the connector on the side locks area and close the snap buttons.



3.7.2 To remove the basket

Unfasten all of the snap buttons and Velcro to remove the basket.

4 Using and Operation

4.1 Handle Tube Height Adjustment

Hold the one-hand-fold button, and press down to adjust the handle tube to the desired position. There are three adjustable positions.



4.2 Seatback Angle Adjustment

To hold the seatback angle adjustable button by one hand, then push upwards at the same time to adjust the seatback to the desired position. There are three adjustable positions for seatback.



4.3 Canopy Folding

Push or pull the canopy support wire slightly by one hand to open or close the canopy. To open the zipper, the canopy can be extended as well. To wrap the fabric cover forwards, the child on the seat will be visible through the canopy window.



4.4 Rest Board

To press down the rest board adjustable buttons by two hands at the same time, then adjust the rest board to the desired positions. If only adjust the rest board upwards, lift it up directly.



4.5 Brake

To lock the brake, push down on the rear brake lever until it clicks and locks into place.
To release the brake, push the top of brake lever



WARNING When using the brakes, always ensure the brakes are securely locked

4.6 Front Wheel Swivel Lock

To lock the front wheel pivot, push down on the lock until it “clicks”. The wheel will be fixed in the correct position. To unlock the front wheel pivot, push up on the lock.



4.7 Harness System

4.7.1 To secure the child

Make sure the harness strap is unbuckled. Place the child on the seat without sitting on any of the harness components. Insert the shoulder strap buckle tongue through the waist strap tongue and click into the buckle of crotch strap

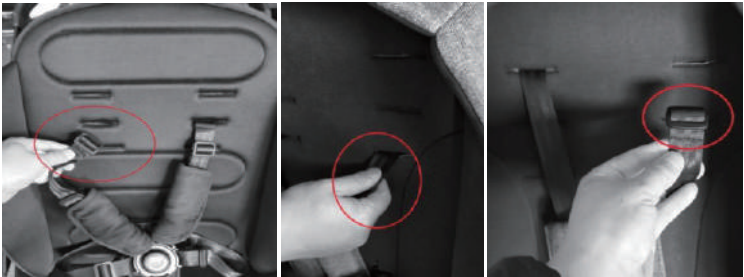


4.7.2 Harness Strap Adjustment

To adjust the harness by moving the adjuster clips on the shoulder strap, waist strap and crotch strap to the desired length to suit for your child.



The shoulder strap anchors can be adjusted in three positions basing on your child height. Use one hand to push the shoulder strap anchor into the hole which the shoulder strap is fixed on the seatback, and use another hand to pull the shoulder strap out of the seatback. Fit the shoulder strap to the positions you need to adjust on the seatback. Please pull the shoulder straps again to ensure they are secured on the seatback before use.



4.7.3 Removing the Child

Pres the harness buckle to release waist and shoulder straps separately. Remove the shoulder harness from the child shoulder to take away the child from the seat completely.

4.7.4 Assemble the car seat on the stroller

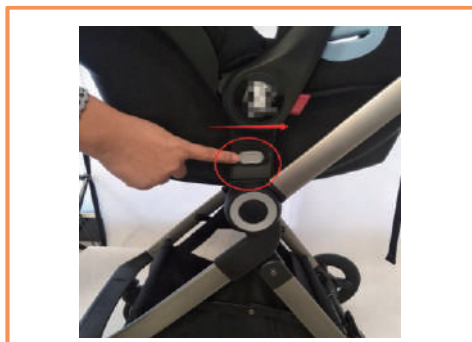
1. To fit the car seat adopter on the car seat ;



2. To fit the car seat with the frame ;



3. To remove car seat from frame (Push the gray button);



5. Cleaning and Maintenance

- To prolong the life of your stroller and accessories, keep the products clean and do not leave in the direct sunlight or in the car for extended periods of time.
- Regularly inspect your stroller to ensure that locking device and other components remain in good condition.
- Maintain the safety of your stroller by seeking prompt repair for bent, torn, worn or broken parts.

Chassis Cleaning

- Brush off excess dirt and remove sand and salt after visiting
- the beach; wipe clean with a moist cloth and a mild cleaning agent.

Lubricating Moving Parts

- Periodically lubricate the wheels, hinges and other sliding parts
- Using a light oil or silicon spray. Do not use heavy oil.

Seat Cover Cleaning

- The seat may be spot cleaned using a damp sponge with a mild soap or detergent. Allow to dry completely before folding or storing away.
- Do not use the bleach.
- Do not Iron.

6. Warranty

Your product complies with current safety requirements and is guaranteed to be free from manufacturing defects in workmanship and material at time of purchase. If this product shows material and/or manufacturing defects after purchase and during the warranty period (with normal use as described in the user manual), then please contact your retailer.

Warranty Conditions:

The warranty period is 24 months from the date of purchase. This warranty period cannot extend, even in the event of repair. The warranty is made to the original owner of the product and is not transferable to any subsequent owner.

For the warranty to be valid you need to:

1. Provide the original purchase receipt to your retailer
2. Provide a description of the defect to your retailer.

The warranty does not apply in the following circumstances:

- The product has been modified or repaired by unauthorized third parties.
- Corrosion or rust on the wheels and chassis due to extreme environmental conditions, including high humidity, salt spray, ice, snow or due to improper maintenance.
- The damage was caused by improper usage or maintenance or due to anything else deemed to be the fault of the user; in particular, failure to comply with the instructions for use as

described in the user manual.

- The damage was caused as the result of an accident or airline/ transport damage.
- The damage is the result of overloading (exceeding the maximum weight allowance for the child and any items being carried)
- Normal wear/ tear that can be expected with daily use product.
- Discoloration or damage to the fabric due to washing, rainwater, or excessive exposure to sunlight.

GARANTİ BELGESİ

Seri: 4A

MALIN

Cinsi : BEBEK ARABASI
Markası : HUGGY
Modeli : REVO

SATICI FİRMANIN

Ünvanı:

Adresi :

ALICININ

Adı Soyadı : _____

Adresi : _____

Tel : _____

Fatura No
Kaşe ve imza

Malin Tüketicisi
Teslim Tarihi : _____
Teslim Yeri : _____

Azami Tamir Süresi : 20 İş Günü
Garanti Süresi : 2 Yıl

Üretici / İthalatçı Firma:

Ünvanı

Merkez Adres

Telefon

Faks

: Kurt Grup Dış Ticaret A.Ş.
: 1. OSB 6. Cade No:1 – SİVAS
: 0346 218 14 13
: 0212 310 46 44

ÖNEMLİ NOTLAR:

Lütfen ürünü kullanmadan önce kullanma kılavuzunu dikkatli okuyunuz.

Garanti belgesi, sadece üründeki fabrikasyon üretim hatalarını kapsamaktadır.

Karalanmış, hasar görmüş yada üzerindeki bilgiler kapatılacak şekilde etiket yapıştırılmış garanti kartları geçersizdir.

huggy
"Care For Future"

GARANTİ ŞARTLARI

- Garanti süresi, malın teslim tarihinden itibaren başlar ve iki yıldır.
- Malın bütün parçaları dahil olmak üzere tamamı firmamızın garantisi kapsamındadır.
- Malın garanti süresi içerisinde arızalanması durumunda, tamirde geçen süre garanti süresine eklenir.
Malın tamir süresi en fazla 20 iş günüdür. Bu süre, mala ilişkin arızanın servis istasyonuna, servis istasyonunun olmaması durumunda, malın satıcısı, bayi, acentası, temsilciliği, ithalatçısı veya imalatçısından birisine bildirim tarihinde başlar.
Sanayi malının anzasının 10 iş günü içerisinde giderilmemesi halinde, imalatçı veya ithalatçı, malın tamiri tamamlanıncaya kadar, benzer özelliklere sahip başka bir sanayi malını tüketicinin kullanımına tahsis etmek zorundadır.
- Malın garanti süresi içerisinde, gerek malzeme gerek işçilik, gerekse montaj hatalarından dolayı arızalanması halinde, işçilik masrafı, değiştirilen parça bedeli yada başka herhangi bir ad altında hiçbir ücret talep etmeksizin tamiri yapılacaktır.
- Tüketicinin, ücretsiz onarım hakkını kullanması halinde malın; a) Garanti süresi içinde tekrar arızalanması, b) Tamir için gereken azami sürenin aşılması, c) Tamirin mümkün olmadığında, yetkili servis istasyonu, satıcı, üretici veya ithalatçı tarafından bir raporla belirlenmesi durumunda; tüketici malın bedel iadesini, ayıp oranında bedel indirimi veya imkan varsa malın ayıpsız misli ile değiştirilmesini satıcıdan talep edebilir. Satıcı, tüketicinin talebini reddedemez.
Bu talebin yerine getirilmemesi durumunda satıcı, üretici ve ithalatçı müteselsilen sorumludur.
Malın ayıpsız misli ile değiştirilmesinin satıcı için orantısız güçlükleri beraberinde getirecek olması halinde tüketici, sözleşmeden dönme veya ayıp oranında bedelden indirim haklarından birini kullanabilir. Orantısızlığın tayininde malın ayıpsız değeri, ayıbın önemi ve diğer seçilmiş kriterlere basvurmanın tüketici açısından sorun teşkil edip etmeyeceği gibi hususlar dikkate alınır.
Tüketicinin sözleşmeden dönme veya ayıp oranında bedelden indirim hakkını seçtiği durumlarda, satıcı, malın bedelinin tümünü veya bedelden yapılan indirim tutarını derhal tüketiciye iade etmek zorundadır.
Tüketicinin malın ayıpsız misli ile değiştirilmesi hakkını seçmesi durumunda satıcı, üretici veya ithalatçının, malın ayıpsız misli ile değiştirilmesi talebinin kendilerine bildirilmesinden itibaren azami otuz iş günü içerisinde, bu talebi yerine getirmesi zorunludur.
Birinci fıkranın (c) bendinde belirtilen raporun, arızanın bildirim tarihinden itibaren o mala ilişkin azami tamir süresi içerisinde düzenlenmesi zorunludur.
- Malın kullanma kılavuzunda yer alan hususlara aykırı kullanılmasından kaynaklanan arızalar ve kullanım hatasından kaynaklanan arızalar garanti kapsamı dışındadır.
- Garanti süresi içerisinde, servis istasyonları tarafından yapılmasının zorunlu olduğu, imalatçı veya ithalatçı tarafından şart koşulan periyodik bakımlarda; verilen hizmet karşılığında tüketiciden işçilik ücreti veya benzeri bir ücret talep edilemez.
- Fabrikasyon hatalarından doğan arızaların tamirinde garanti kapsamının geçerli olabileceğini, ürünün satıcı mağaza tarafından kaselemiş orijinal fatura ve garanti kartı ile servise getirilmesi veya gönderilmesi şarttır.
- Tüketiciler şikayet ve itirazları konusunda Tüketici Mahkemelerine ve Tüketici Hakem Heyetlerine başvuruabilirler.
- Malın ayıplı olduğunun anlaşılması durumunda tüketici;
a) Satılanı geri vermeye hazır olduğunu bildirerek sözleşmeden dönme, b) Satılanı alkoyp ayıp oranında satış bedelinden indirim isteme, c) Aşırı bir masraf gerektirmedik takdirde, bütün masrafları satıcıya ait olmak üzere satılanın ücretsiz onarılması isteme, ç) İmkân varsa, satılanın ayıpsız bir misli ile değiştirilmesini isteme, seçilmiş haklarından birini kullanabilir.

huggy
"Care For Future"

Kurt Grup Dış Tic. Ltd. Sti 1. OSB 2. Kısım 6. Cade No:1
Merkez / Sivas Tel. : 0346 221 46 60 Whatapp: 0506 480 10 19
www.kurtgruptld.com



“ Care for future “

Kurt Grup Dış Tic. Ltd. Sti 1. OSB 2. Kısım 6. Cadde No:1
Merkez / Sivas Tel. : 0346 221 46 60 WhatsApp: 0506 480 10 19
www.kurtgrupltd.com