

DANTHERMGROUP

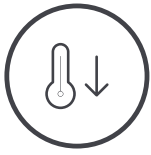


PROFESSIONAL INSTALLED  
**COOLING SOLUTIONS**

FOR INDUSTRIAL, COMMERCIAL AND RESIDENTIAL PURPOSES

**Dantherm**<sup>®</sup>  
CLIMATE SOLUTIONS

## WHY CHOOSE BIOCOOL AIR COOLERS?



Reduces temperature between 7°C and 20°C by external conditions



No need to close doors or windows



Low energy consumption and spends up to 80% less than an A/C



Reduces static electricity



Improves air quality by moving dust, fumes and odours



Improves productivity in industries



Allows air-conditioning of certain areas



100% renewal of fresh and filtered outside air

### Cooling solutions for

- Textiles
- Foundries
- Residences
- Sport centres and commercial buildings
- Food industry
- Technical rooms/data centres
- Ceramics
- Schools
- Laundries
- Greenhouses
- Pharmaceutical warehouses
- Car dealership/garages
- Plastics



## OPERATION



### Evaporative cooling is present in nature

Sometimes nature puts at our disposal resources that make our life more comfortable and respectful with the environment. The evaporative cooling is present in nature, in places close to the water as the waterfalls, lakes, seas and oceans and even on the human skin. The primitive men already applied rudimentary cooling techniques on the basis of this observation.

**Biocool reproduces the effect of a sea breeze, driving fresh air where it may be needed.**

### A sustainable system

The Bio-air conditioning is a natural way of cooling, in addition is economic, healthy and ecological. This system allows the constant renewal of air, improving its quality as introduces clean and filtered air inside the space, evacuating bad odours, smoke and gases to the outside, allowing to maintain optimal ambient healthiness.

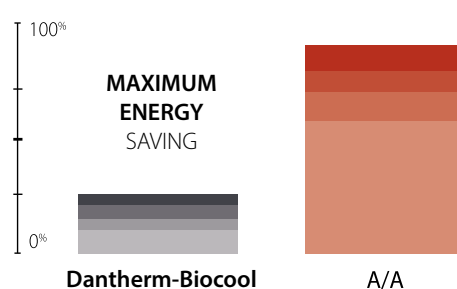


### How it works?

As the air passes through the cooling pads, some of the heat is absorbed by natural evaporation and a fresh breeze is blown out. Temperature of the air emitted is between 4°C and 12°C lower than the outdoor air, at approximately 20 to 25°C."

The machine has automatic control which minimize maintenance and allow it to be adapted to different applications controlling the optimal desired conditions.

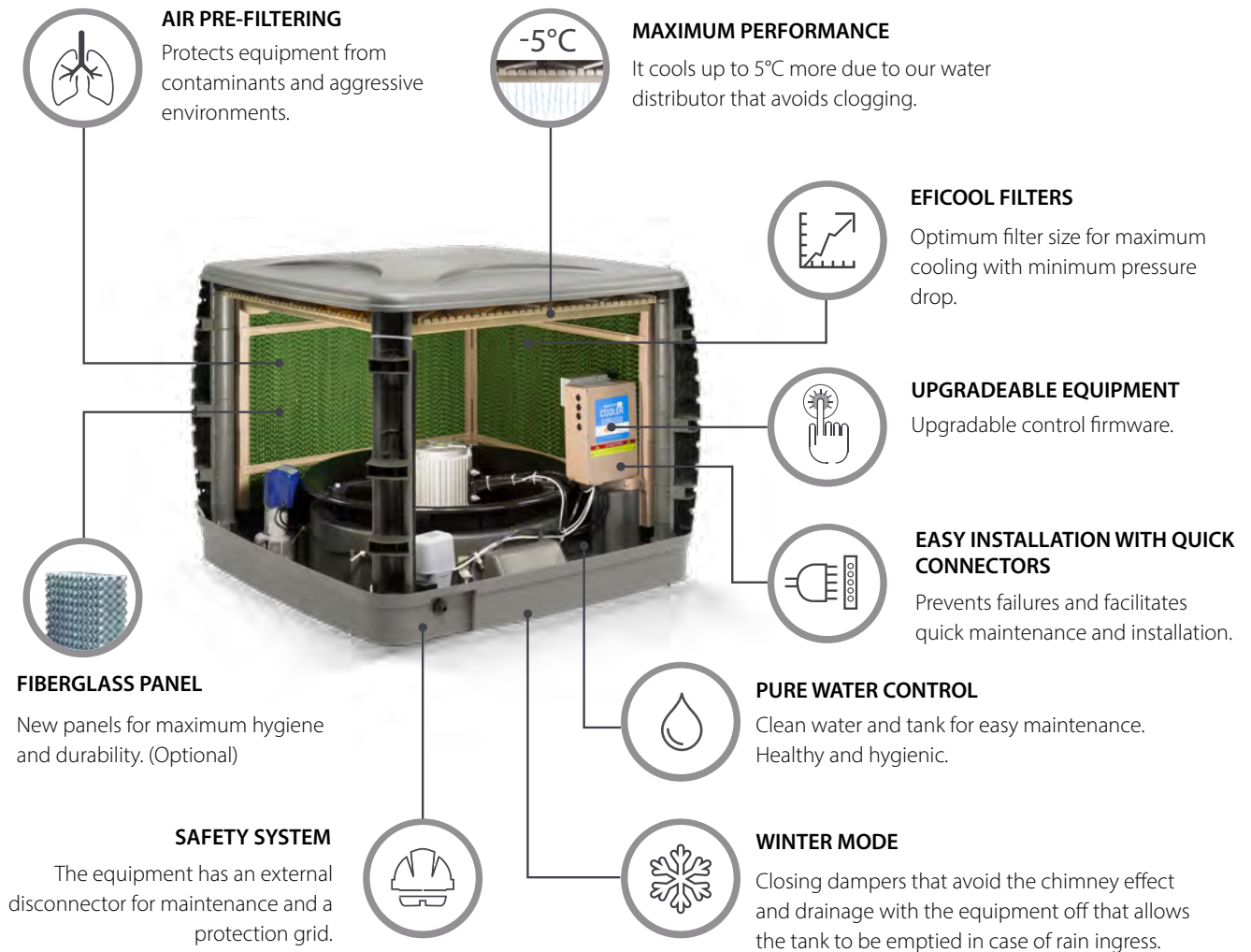
### Energy consumption





# MAXIMUM QUALITY, EFFICIENCY AND INNOVATION

**Dantherm**  
CLIMATE SOLUTIONS



## WATER CLEANING MANAGEMENT WITH OZONE ANTIMICROBIAL TECHNOLOGY

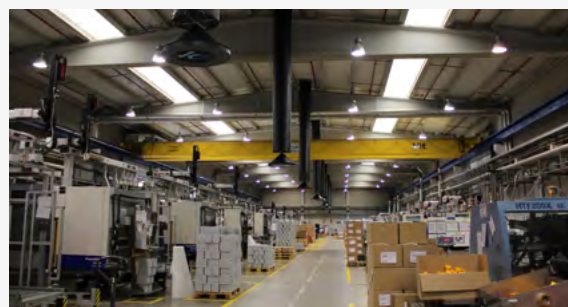
KEEPING YOUR UNIT CLEAN HAS NEVER BEEN SO EASY



**BIO 18AIV****BIO 18AIV**

- Simple installation
- Powerful fan
- Even distribution of water allowing maximum cooling efficiency
- Possibility to cool selected zones
- Automatic cleaning
- Ozone eliminates 100% of bacteria that can survive in still water
- Fast and quick maintenance
- External cut-off – integrated safety fuse
- Ducts automatic opening to avoid cold air entering from outside during winter and preventing hot air escaping from the inside
- Pre-filters prevent polluting particles being brought into the cooling pads (optional)
- Recommended for zonal or global coverage installations with uniform equipment distribution

Specifications	Units	BIO 18AIV
Air flow	m <sup>3</sup> /h	18,000
Cooling capacity	W	19,652
Fan type		Axial-Inverter
Max. energy consumption	W	1,200
Max. current	A	8
Fan diameter	mm	610
Max. fan speed	rpm	1,390
Power supply	V/Hz	220/1ph/50-60
Filter pad size	mm	825 x 620 x 100
Air exit		Top, side down
Water tank capacity	l	25
Remote control		Optional
Max sound level	dB(A)	<70
Product dimensions (l x w x h)	mm	1110 x 1110 x 950
Shipping dimensions (l x w x h)	mm	1170 x 1120 x 1050
Net/gross weight	kg	67/92

**BIO 18CV DC**

- Simple installation
- Powerful fan
- Even distribution of water allowing maximum cooling efficiency
- Possibility to cool selected zones
- Automatic cleaning
- Ozone eliminates 100% of bacteria that can survive in still water
- Fast and quick maintenance
- External cut-off – integrated safety fuse
- Ducts automatic opening to avoid cold air entering from outside during winter and preventing hot air escaping from the inside
- Pre-filters prevent polluting particles being brought into the cooling pads (optional)

Specifications	Units	BIO 18CV DC
Air flow	m <sup>3</sup> /h	18,000
Cooling capacity	W	18,290
Fan type		Centrifugal
Max. energy consumption	W	1,500
Max. current	A	9
Fan diameter	mm	650
Max. fan speed	rpm	-
Power supply	V/Hz	220/1ph/50-60
Filter pad size	mm	2 x (825 x 620 x 100) + 2 x (625 x 820 x 75)
Air exit		Down, Top
Water tank capacity	l	30
Remote control		Optional
Max sound level	dB(A)	<69
Product dimensions (l x w x h)	mm	1150 x 1150 x 950
Shipping dimensions (l x w x h)	mm	1170 x 1120 x 1050
Net/gross weight	kg	77/102

**BIO 30AV**

- Simple installation
- Powerful fan
- Even distribution of water allowing maximum cooling efficiency
- Possibility to cool selected zones
- Automatic cleaning
- Ozone eliminates 100% of bacteria that can survive in still water
- Fast and quick maintenance
- External cut-off – integrated safety fuse
- Pre-filters prevent polluting particles being brought into the cooling pads (optional)
- Recommended for installations that require large volumes of air supply as well as air diffusion over long distances

Specifications	Units	BIO 30AV
Air flow	m <sup>3</sup> /h	30,000
Cooling capacity	W	28,800
Fan type		Axial
Max. energy consumption	W	3,000
Max. current	A	7.1
Fan diameter	mm	710
Max. fan speed	rpm	1,490
Power supply	V/Hz	380/3ph/50-60
Filter pad size	mm	890 x 970 x 100
Air exit		Top, side, down
Water tank capacity	l	45
Remote control		Optional
Max sound level	dB(A)	<80
Product dimensions (l x w x h)	mm	1290 x 1290 x 1310
Shipping dimensions (l x w x h)	mm	1350 x 1350 x 1560
Net/gross weight	kg	120/165

**BIO EXH**

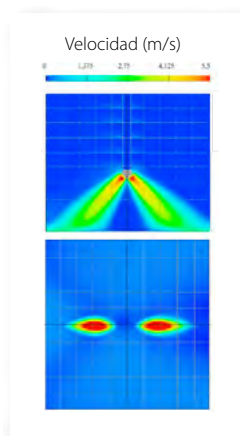
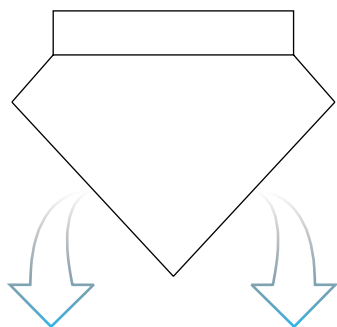
- Simple installation
- Powerful fan
- Fast and quick maintenance
- External cut-off – integrated safety fuse
- Pre-filters prevent polluting particles being brought into the cooling pads
- Guarantees optimum operation of the installation by automatically adapting its extraction flow rate according to the in-flow rate of discharge at any given moment

Specifications	Units	BIO EXH
Air flow	m <sup>3</sup> /h	18,000
Cooling capacity	W	-
Fan type		Axial
Max. energy consumption	W	1,200
Max. current	A	360
Fan diameter	mm	5.6
Max. fan speed	rpm	600
Power supply	V/Hz	1390
Filter pad size	mm	220/1ph/50
Air exit		1100/60 to 200-264V
Water tank capacity	l	170-1,390
Remote control		Sí
Max sound level	dB(A)	<70
Product dimensions (l x w x h)	mm	1110 x 1110 x 950
Shipping dimensions (l x w x h)	mm	1170 x 1120 x 1050
Net/gross weight	kg	60/70

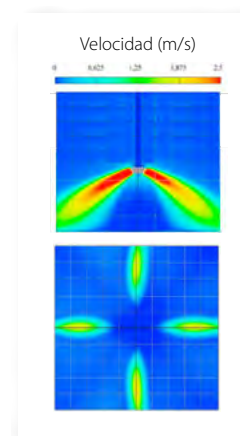
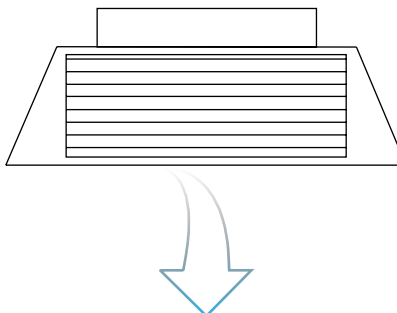


## AIR DIFFUSERS

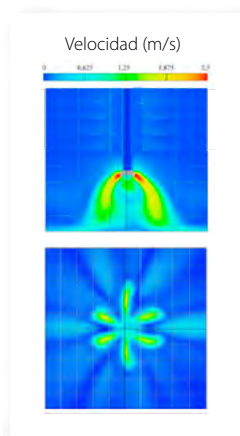
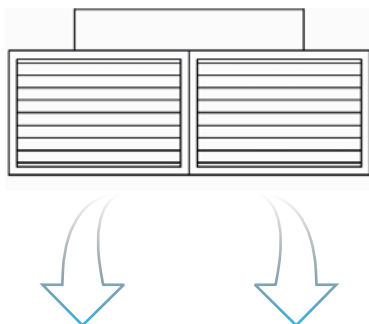
**2-SIDED DIFFUSER**



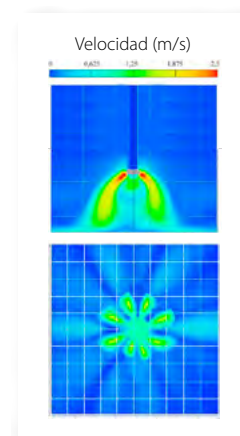
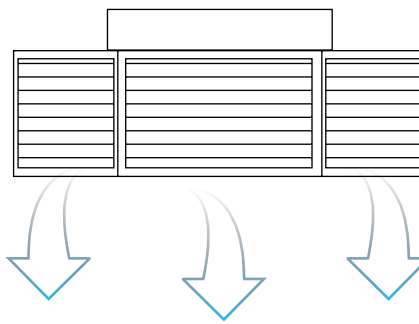
**4-SIDED DIFFUSER**



**6-SIDED DIFFUSER**



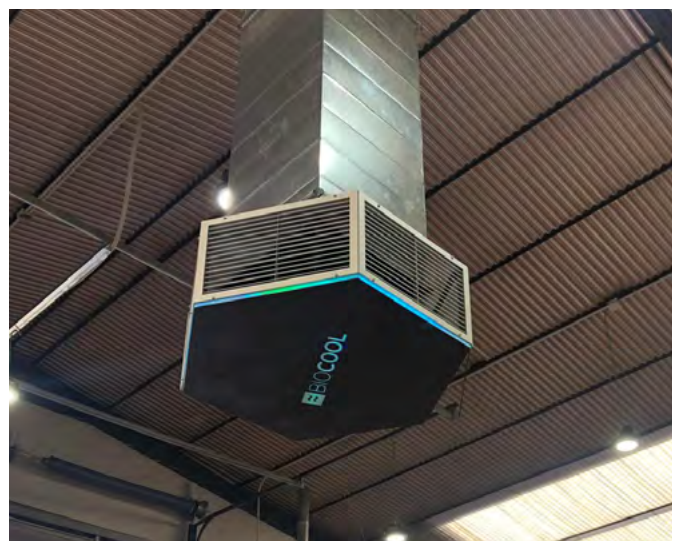
**8-SIDED DIFFUSER**



\*AIR DIFFUSION STUDIES ENDORSED BY THE POLYTECHNIC UNIVERSITY OF VALENCIA.



## AIR DIFFUSERS







## THE MOST ADVANCED CONTROL SYSTEM ON THE MARKET



Group control up to 16 units supporting temperature sensor, ambient humidity for local management.

- Programming by humidity and/or temperature (3 preset programmable modes)
- Filter drying prior to shutdown to maximize hygiene
- Daily operation programming (up to 8 weekly events)
- External temperature and humidity sensor
- Adjustable drain time programming
- Fault and origin identification
- Allows limiting the humidity input that influences the ambient conditions
- Connectable to the local network to consult from PC, tablet or mobile in web environment
- Allows optimization of "freecooling" with external conditions sensor. T°C and RH%
- Logs historical sensor data and operating hours, downloadable to PC



## MONITOR THE PERFORMANCE AND NEED FOR MAINTENANCE FROM YOUR TABLET OR PC



### AIR QUALITY SYSTEM FOR CO<sub>2</sub> CONTROL INCLUDED

Advanced control system that allows you to visualize and control the air quality, with AQS Alarm included to warn you if the air quality limit is exceeded. It also allows automatic ventilation regulation to improve air quality if it's necessary.



INTEGRABLE WITH:



SIEMENS



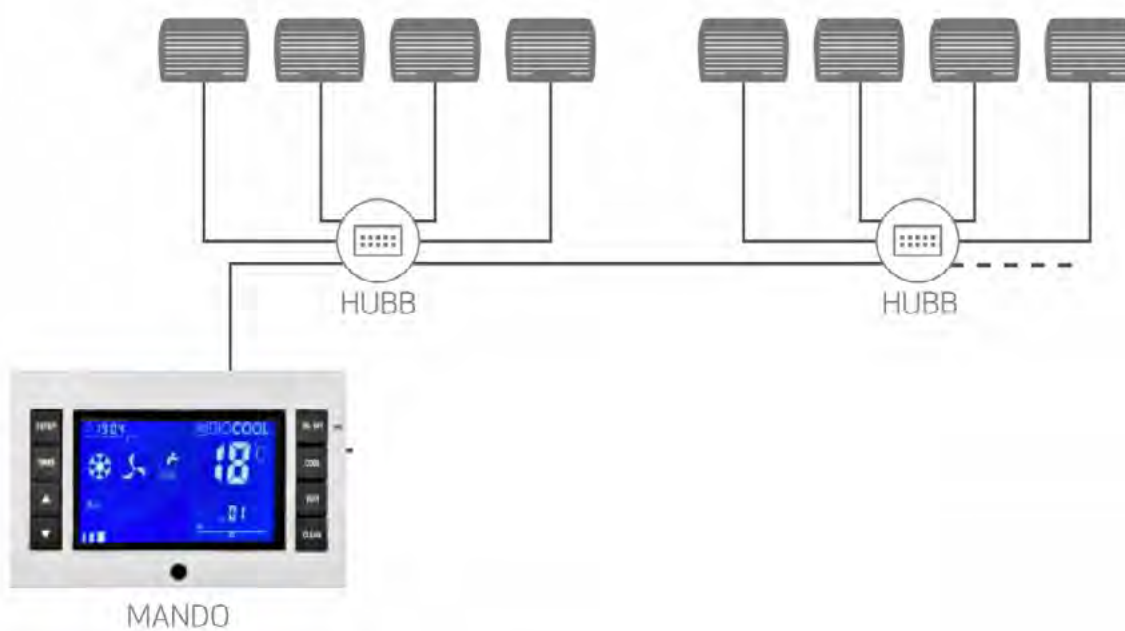




**ADVANCED DIGITAL CONTROL**



**TOUCH CONTROL ADVANCED**



## 100% PARAMETERIZABLE CONTROL



**AUTOMATIC CONTROL**  
T°C/HR%



**PURE WATER CONTROL**  
INCLUDING



**SAFETY RESET**  
AUTOMATIC



**GROUP CONTROL**  
UP TO 40 UNITS



**HOURLY PROGRAMMING**  
WEEKLY



And much more...