

## ARTLINES HUDSON KARO HALI

### TEKNİK ÖZELLİKLER

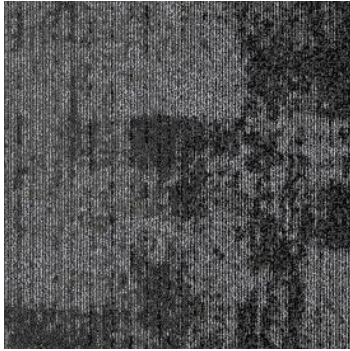
Boyut	:50 cm x 50 cm
İplik Türü	:%100 PP
Taban Türü	:Bitümen & Keçe
İlmeç Yüksekliği	:4,0 mm ± 10%
Toplam Yükseklik	:6,0 mm ± 10%
İlmeç Ağırlığı	:680 g/m <sup>2</sup> ± 10%
Toplam Ağırlık	:3370 g/m <sup>2</sup> ± 10%
Alev Almazlık	:Euroclass Cfl-s1
Dokuma Şekli	:1/12G
Antistatik Özellik	:≤ 3,5Kv
Kullanım Alanı	:Ticari



AATCC 16E ≥4-5 AATCC 107 ≥4-5 AATCC 165 ≥4-5 AATCC 134 ≤3.5kV



ASTM D 3936 ≥3.0 lbc/in ASTM D 1335 ≥8.0 lbs AACHEN ≤0.2% ASTM E 662 ≤450 DMC ASTM E 645 ≥0.22 watts/cm<sup>2</sup> Class II



HUDSON 1208



HUDSON 1239



HUDSON 1245

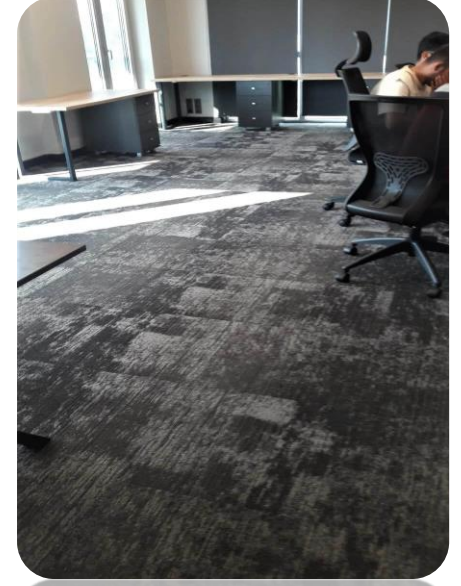




**ATECO ZEMİN MALZ.SAN.TİC.LTD.ŞTİ.**  
Poligon mah. Katar Cad.No:21/A 34460 Sarıyer / İstanbul Sarıyer  
Vd - 099 051 0512  
Tel: 0212 229 19 14 - 229 19 41 - 229 28 14 - 277 11 80  
Fax: 0212 229 46 47  
web: www.ateczemin.com / e-mail: info@atecozemin.com



## ARTLINES HUDSON KARO HALI



**ARTLINES**  
PASPAS SİSTEMLERİ

**ARTLINES**  
KARO HALI

**ARTLINES**  
LVT

**ARTLINES**  
OFİS MOBİLYALARI