

lateral® | carpet tiles



technical specifications

	lateral®
Fibre	85% Polypropylene 15% Nylon
Dimensions	50cm x 50cm
Pile Weight	950g/m ²
Total Weight	4200g/m ²
Total Thickness	7.8mm
Backing	BioBase® recycled backing (BS EN ISO 14021)
Wear Classification	Heavy Contract
Flammability	Euroclass Bfl-s1
Thermal Resistance	Tog Rating 0.62
Castor Chair Rating	BS EN 985 Pass - suitable for continuous use
Static Loading	BS 4939: 1987 (2003) Recovery >80% (24hrs)
Dynamic Loading	BS ISO 2094: 1999 (2005) Loss <20% (1000 impacts)
Body Voltage Test	BS ISO 6356:2000 <2kV
Colour Fastness To Light	BS EN ISO 105 - B02 Minimum grade 6
Colour Fastness To Shampoo	BS 1006:UK-TB: 1990 Minimum Grade 4-5
Sound Absorption Coefficient	BS EN 354:2003
Reduction in Impact Noise	BS EN ISO 140-8: Part 8: 1998 18dB
Reduction in Impact Noise at 1000Hz	BS EN ISO 140-8: Part 8: 1998 17.1dB
Warranty	15 years
Number Of Tiles Per Box	16 (4m ²)



eco₂matters®

We are committed to helping deliver a sustainable future, because we believe that what we do **matters**. To help us deliver on this commitment, we have developed **eco₂matters®**, our sustainability principles, supported by independent 3rd party verification.



lateral® | code are extremely durable mixed ribbed carpet tiles. Made using **bonded®** technique and solution dyed fibres, **lateral® | code** are easy to maintain and feature **anti-fray/anti-ravel** technology. Widely used in the education and commercial sectors, **lateral® | code** complement each other to offer a **low embodied carbon**, sustainable flooring solution, perfect for heavy footfall environments.

	lateral® & code are low carbon		reco₂very take back service provides a no landfill solution for your used tiles
	lateral® & code feature anti-fray/anti-ravel technology		reco₂very products are made using 100% certified renewable electricity
	lateral® & code use BioBase® recycled backing		eco₂matters® declarations are independently 3rd party verified

EPD * products are supported by 3rd party independently verified, product specific EPD's	LEED * products contribute towards Leed accreditation	SKA * products adhere to SKA standards	WELL Building Standards * products contribute to WELL Building Standards
--	---	--	--

ARTLINES LATERAL CARPET TILES



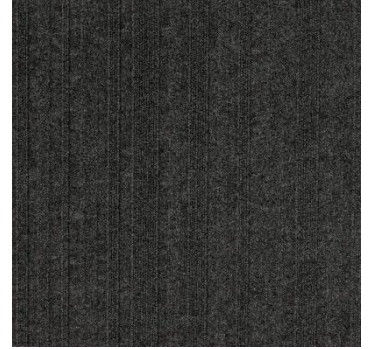
1834 soap stone



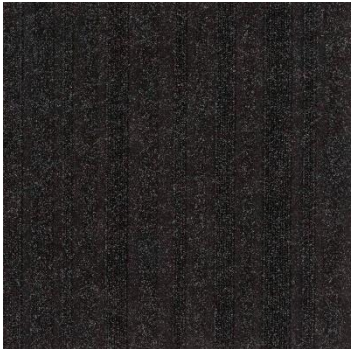
1891 pewter cloud



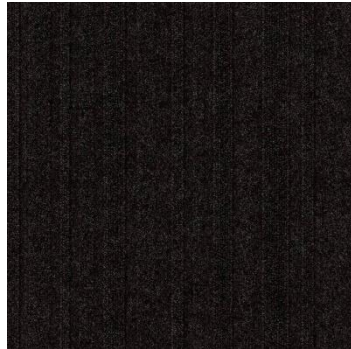
1805 diamond dust



1803 concrete jungle



1802 zinc asphalt



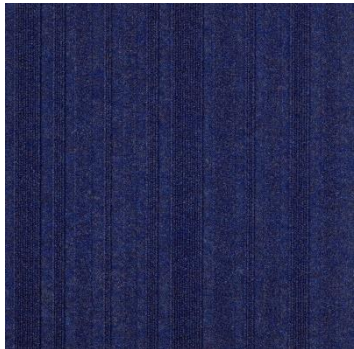
1801 carbon steel



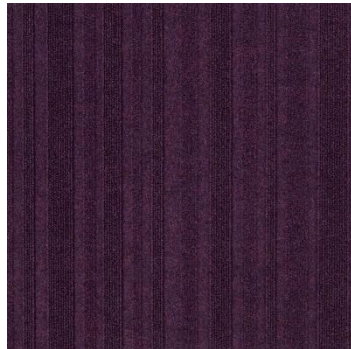
1809 ink stone



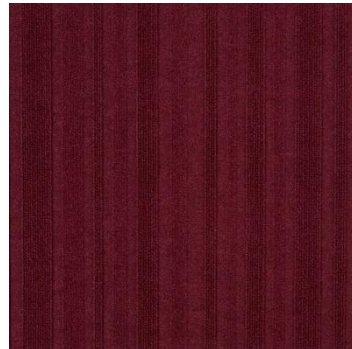
1814 blue monday



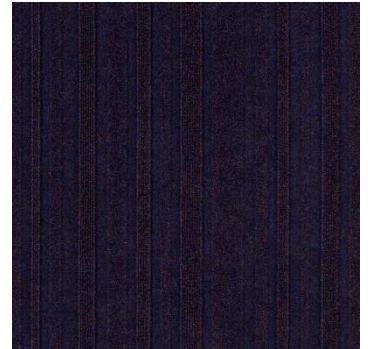
1813 lavender oil



1890 purple emperor



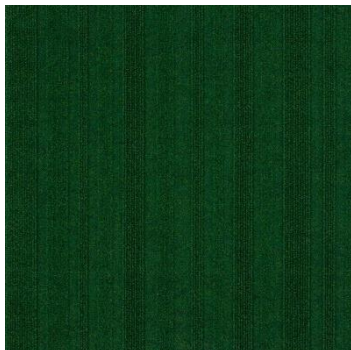
1886 pink diamond



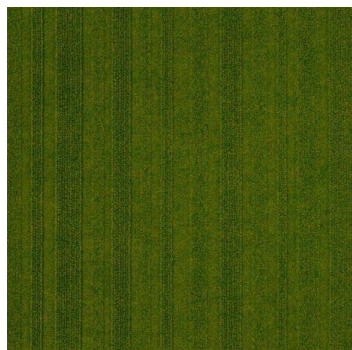
1812 indigo snake



1882 turquoise mountain



1883 emerald coast

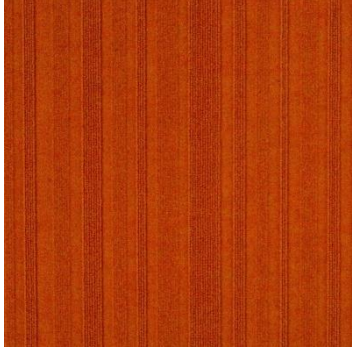


1830 lime street

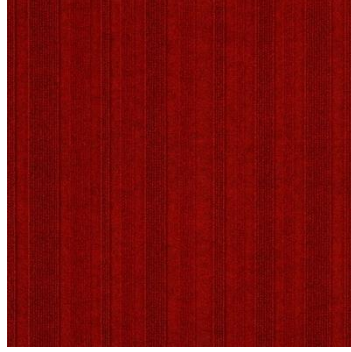


1887 gold quest

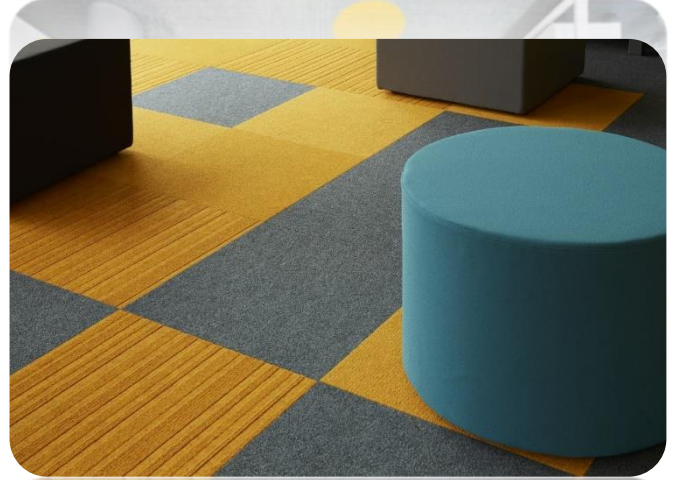
ARTLINES LATERAL CARPET TILES



1839 mandarin duck



1845 scarlet runner



ARTLINES LATERAL CARPET TILES

