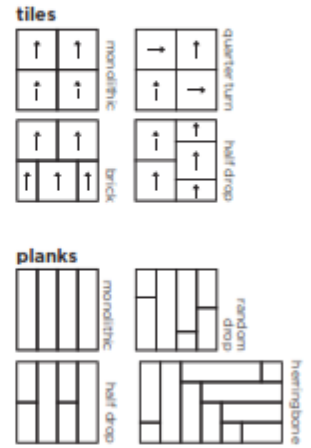


tivoli mist[®] carpet tiles & planks

technical specifications

Product Description	Low Carbon Level Loop
Pile Yarn Description	100% recycled bio-genic solution dyed nylon
Tile Dimensions	50cm x 50cm / 25cm x 100cm
Pile Yarn Weight	600g/m ²
Total Weight	4050g/m ²
Total Thickness	6.5mm
Construction	1/10th gauge loop
Tufts per m ² / Pile Density	196,500/m ²
Backing Description	BioBase[®] recycled backing (recycled BS EN ISO 14021)
Wear Classification	Class 33 heavy commercial use (BS EN 1307)
Luxury Rating Class	LC2
Flammability	Euroclass Bfl-s1
Thermal Resistance	Tog Rating: 0.39
Castor Chair Rating	Pass - continuous use (BS EN 985)
Hexapod	BS ISO 10361: Method B:2000 3 to 4
Static Loading	BS 4939: 1987 (2003) Recovery >80% (24hrs)
Dynamic Loading	BS ISO 2094: 1999 (2005) Loss <20% (1000 impacts)
Body Voltage Test	BS ISO 6356:2012 <2kV
Colour Fastness To Light	BS EN ISO 105 - B02 Minimum Grade 6
Colour Fastness To Shampoo	BS ISO 18168:2015 Minimum Grade 4-5
Sound Absorption Coefficient	BS EN 354:2003
Reduction in Impact Noise	BS EN ISO 10140-3:2010 23dB
Number Of Tiles Per Box	20 (5m ²)/18 (5m ²)
VOC	Class A+
Warranty	15 years



eco₂matters[®]

We are committed to helping deliver a sustainable future, because we believe that what we do **matters**. To help us deliver on this commitment, we have developed **eco₂matters[®]** sustainability goals, supported by the independently 3rd party verified **eco₂matters[®]** ecosystem.



Journey to Net Zero



Positive Environmental Impact



Social Values & Well Being

tivoli mist[®] uses **EgoBalance[®]** 100% **recycled bio-genic** yarn, which is made using **bio-genic** organic waste from **renewable** sources. Combined with our unique **BioBase[®] recycled** backing, **tivoli mist[®]** is **low carbon**. With a design allowing for soft transitions between colours or a sleek all-over pattern that mists from one to another. The colour palette of 10 provides endless possibilities for adding colour into a wide variety of interiors.



low carbon

tivoli mist[®] is **low carbon**



recovery take back service

* **recovery** take back service provides a no landfill solution for your used tiles



bio-genic recycled yarn

tivoli mist[®] uses 100% **recycled bio-genic** solution dyed nylon



100% certified renewable

* products are made using 100% certified **renewable** electricity



BioBase[®] backing

tivoli mist[®] uses **BioBase[®] recycled** backing



independently 3rd party verified

eco₂matters[®] declarations are independently 3rd party verified

EPD

* products are supported by 3rd party independently verified, product specific EPD's

LEED

* products contribute towards Leed accreditation

SKA

* products adhere to SKA standards

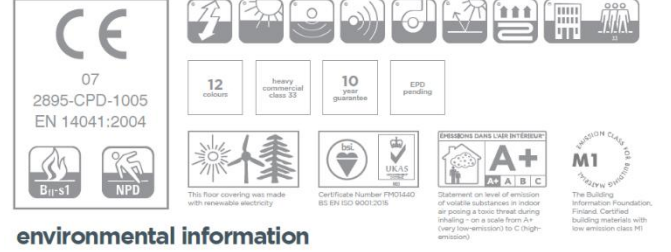
WELL Building Standards

* products contribute to WELL Building Standards

ARTLINES TIVOLI MIST KARO HALI

TEKNİK ÖZELLİKLER

İplik Türü	:%100 PA
Ürün Ebatları	:50 cm x 50 cm
İplik Ağırlığı	:600 gr/m ² ±%10
Toplam Ağırlık	:4050 gr/m ² ±%10
İplik Yüksekliği	:4,0 mm ±%10
Toplam Yükseklik	:6,5 mm ±%10
İplik Miktarı/m ²	:196,500/m ²
Taban Türü	:Accummen 75% Geri Dönüştürülmüş
Kullanım Sınıfı	:BS EN 1307 – Yoğun Trafik Class 33
Yangın Sınıfı	:Euroclass Bfl-s1
Antistatik Özellik	:≤2 Kv
Ses Absorbasyon Değeri	:BS EN ISO 10140-3:2010 23dB



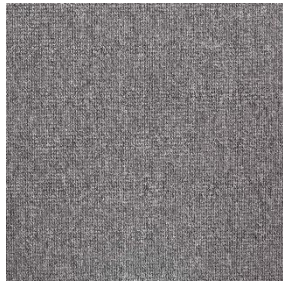
20268 sri lanka sands



32706 bora bora



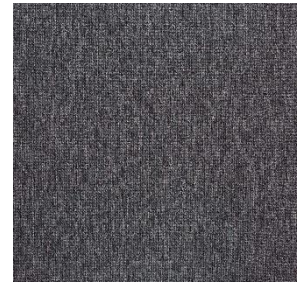
20208 belize greige



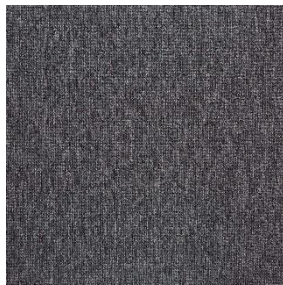
20245 dominca dawn



32712 polar drift



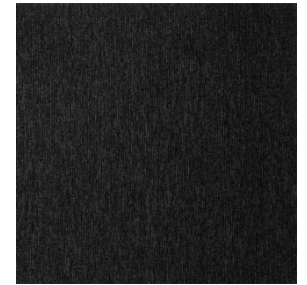
20275 aruba dusk



20275 aruba dusk



32713 galapagos bay



20260 st kitts basalt



20275 aruba dusk



32714 shoreline sail



20285 Hudson buy

ARTLINES TIVOLI MIST KARO HALI



20267 miami aqua



32715 ocean drive



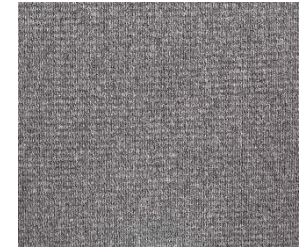
20245 dominca dawn



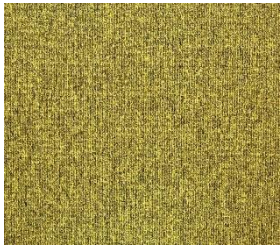
20201 guyana moss



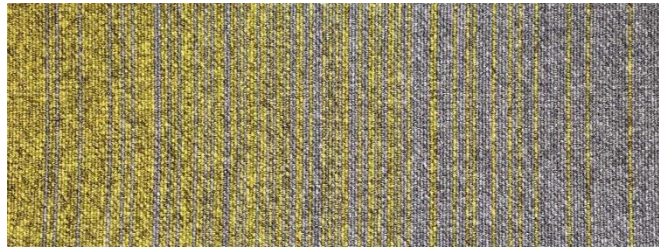
32705 turtle bay



20245 dominca dawn



20266 tiki yellow



32701 south beach



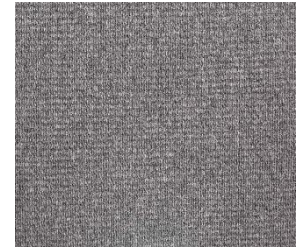
20245 dominca dawn



20279 madagascan orange



32716 sunset canyon



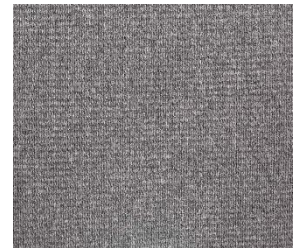
20245 dominca dawn



20277 pink paradise



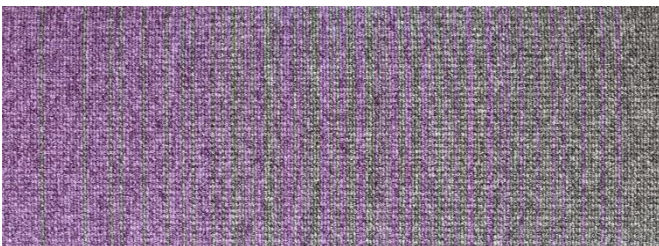
32717 hibiscus haven



20245 dominca dawn



20276 tropic puple

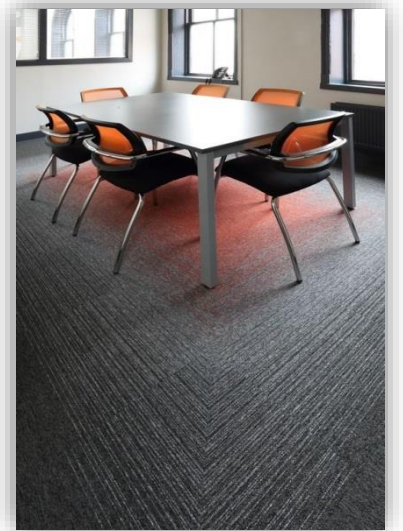
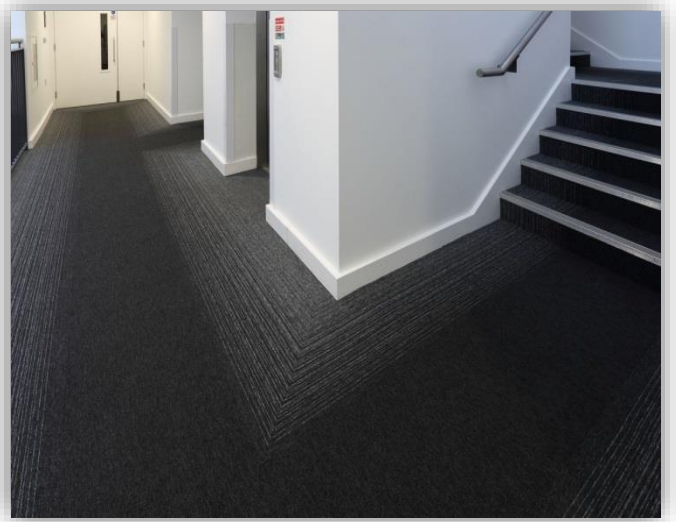


32718 island haze



20245 dominca dawn

ARTLINES TIVOLI MIST CARPET TILES

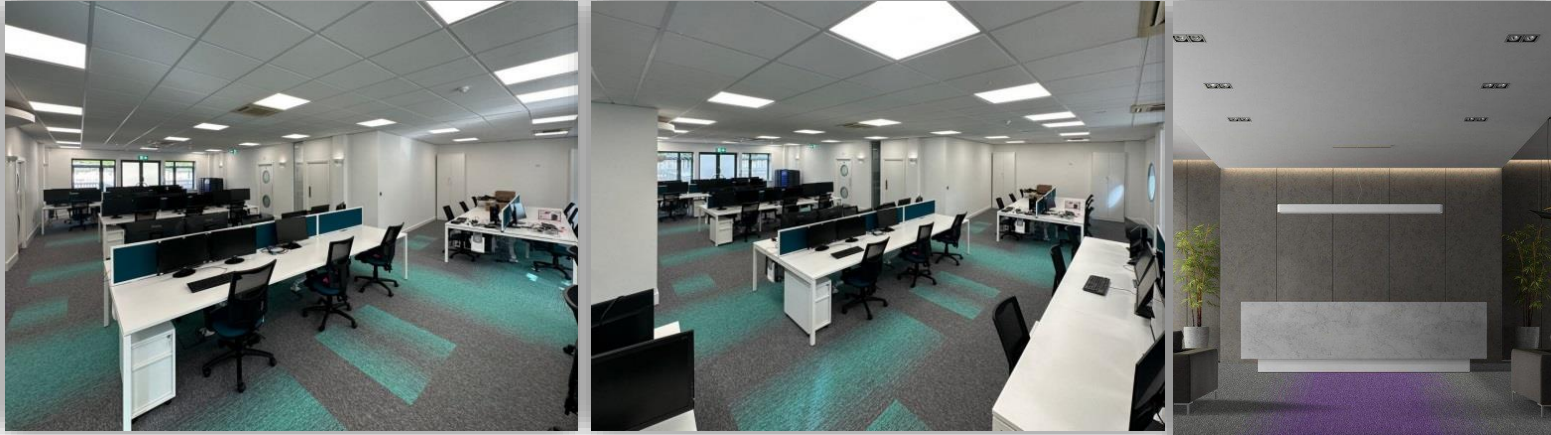




ATECO ZEMİN MALZ.SAN.ΤİC.LTD.ŞTİ.
Poligon mah. Katar Cad.No:21/A 34460 Sarıyer / İstanbul Sarıyer
Vd - 099 051 0512
Tel: 0212 229 19 14 - 229 19 41 - 229 28 14 - 277 11 80
Fax: 0212 229 46 47
web: www.ateczemin.com / e-mail: info@atecozemin.com



ARTLİNES TIVOLI MİST KARO HALI



ARTLİNES
PASPAS SİSTEMLERİ

ARTLİNES
KARO HALI

ARTLİNES
LVT

ARTLİNES
OFİS MOBİLYALARI